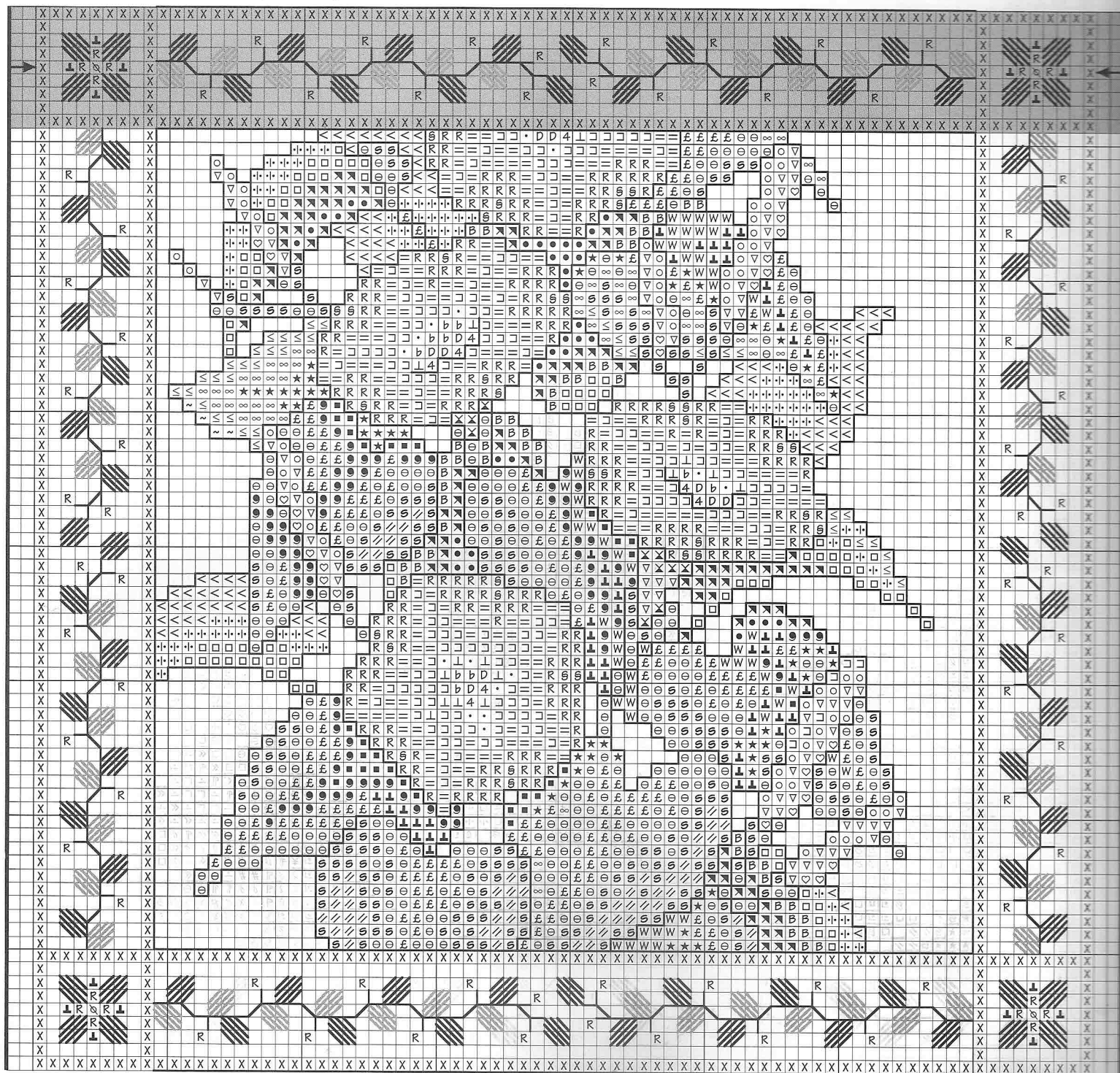


Shaded rows indicate overlap from previous section.



MORNING GLORY

Cross Stitch

DMC	DMC	DMC
• blanc	■ 520	♡ 3042
R 340/793	∞ 522	3051
× 340/3041	⊖ 522/3347	3052
= 341/794	≤ 523	● 3345/3362
▽ 341/3042	⊗ 523/3348	£ 3346/3363
⋈ 422	~ 524	W 3362
↗ 472/524	610	⌞ 3362/3363
● 501/3362	X 611/3045	★ 3363
⬢ 501/3363	4 676	○ 3743/3747
□ 502/522	D 745	⊗ 3807
B 502/3363	⊥ 762	b 3823
⋈ 503/523	⊐ 775	
< 504/524	792	

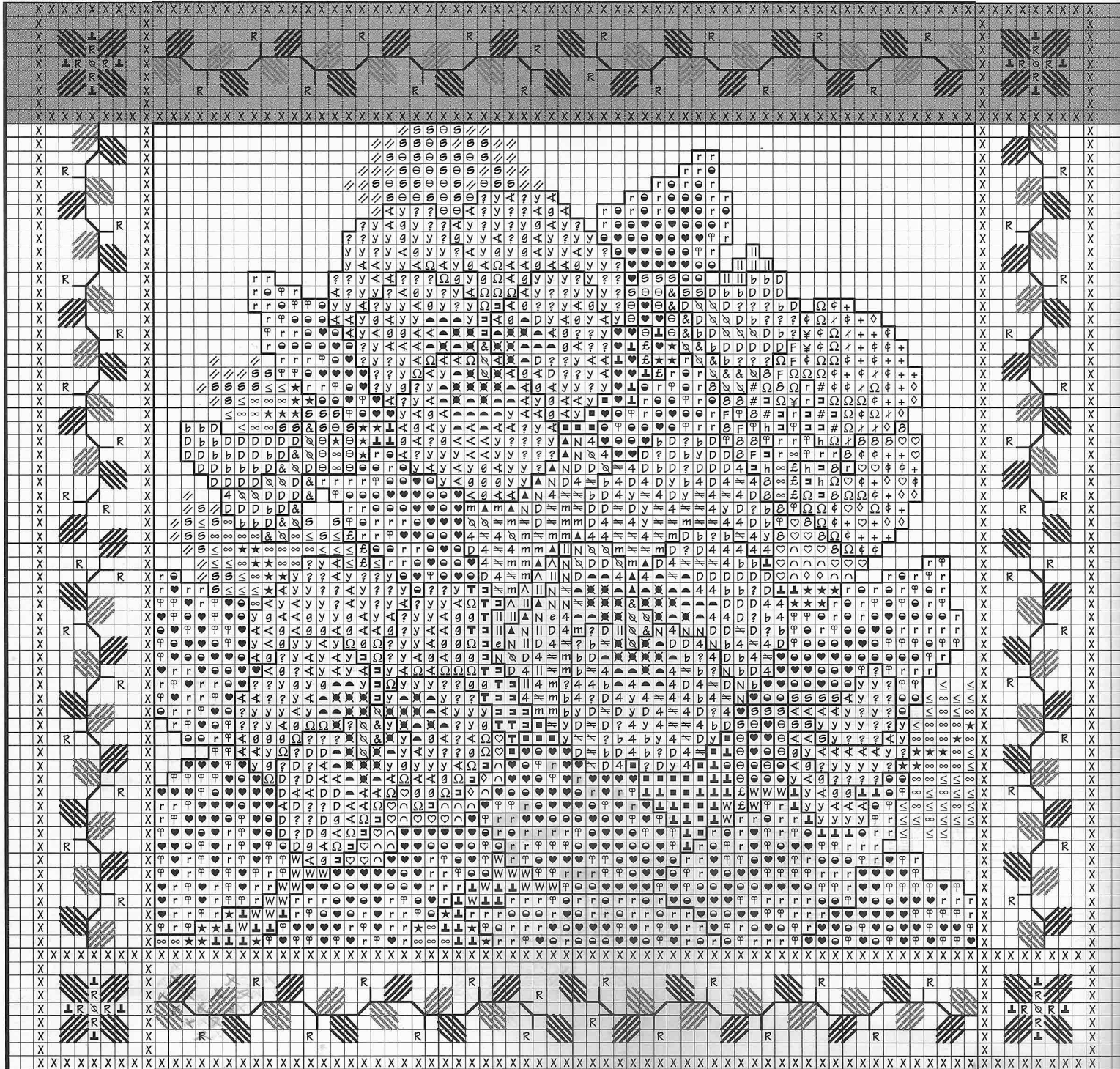
Backstitch

610	inside edges of block
3042	centers of flowers <i>centres des fleurs</i>
3807	flower buds
792	flower edges
3363	any area where leaf edge touches only fabric
3362	remainder of leaves
3362	stems in border

Diagonal Satin Stitch

↗ 3051/3362
↘ 3052/3363

Shaded rows indicate overlap from previous section.



PANSY

Cross Stitch

DMC	DMC	DMC	DMC
Ω 223/316	∞ 522	⋈ 676/3773	m 3045
g 223/3773	φ 522/3012	D 745	3051
ι 224/3727	Θ 522/3347	ll 745/842	3052
# 316/3041	≤ 523	y 745/950	T 3064/3722
¥ 316/3042	r 523/3013	+ 778/3743	£ 3346/3363
F 316/3726	s 523/3348	♥ 3011/3362	W 3362
R 340/793	Λ 543/3823	○ 3012/3363	⌞ 3362/3363
∂ 422	610	⊖ 3041/3042	★ 3363
e 422/613	▲ 610/611	▲ 3041/3045	▣ 3722/3726
N 422/3042	✕ 610/3740	h 3041/3726	◇ 3743
& 422/3045	X 611/3045	♡ 3042	3772
↗ 472/524	4 676	♣ 3042/3727	? 3774/3823
■ 520	≡ 676/3045	○ 3042/3743	b 3823

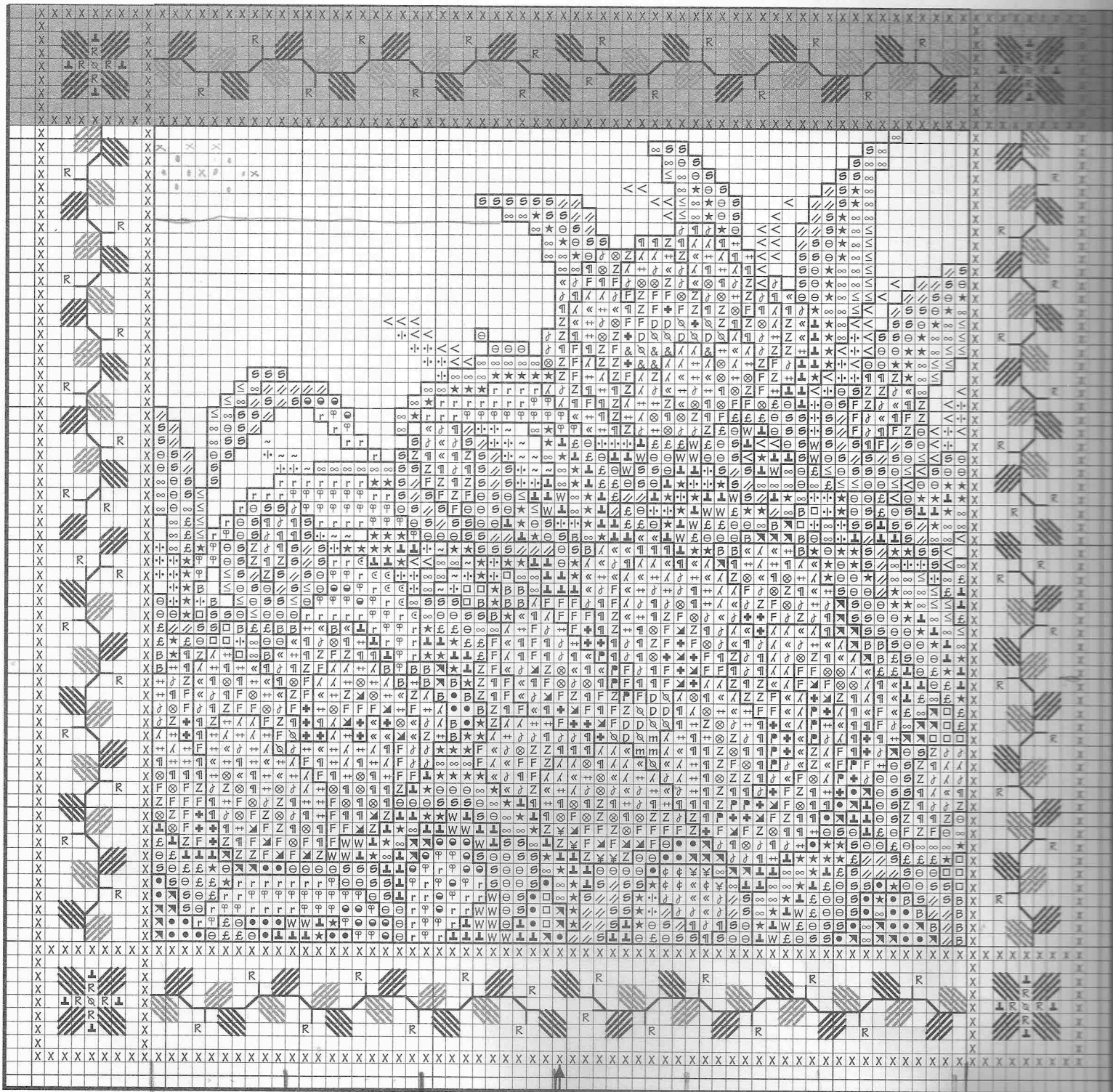
Backstitch

610	inside edges of block
611	centers of flowers
611	yellow pansy
3041	purple/mauve petals
3772	salmon/yellow pansies
3772	bud in lower right corner
3045	remainder of buds
3012	any area where leaf edge touches only fabric
3362	remainder of leaves
3362	stems in border

Diagonal Satin Stitch

3051/3362
3052/3363

Shaded rows indicate overlap from previous section.



PEONY

Cross Stitch

DMC	DMC	DMC	DMC
♣ 315/3726	✦ 501/3363	~ 524	3052
Z 316	□ 502/522	610	£ 3346/3363
¥ 316/3042	B 502/3363	X 611/3045	W 3362
⊗ 316/3608	⋈ 503/523	D 745	⌞ 3362/3363
F 316/3726	< 504/524	« 778	★ 3363
¶ 316/3727	∞ 522	∧ 778/3689	➤ 3607/3726
R 340/793	φ 522/3012	● 3012/3363	++ 3609/3727
⋈ 422	⊖ 522/3347	© 3013	+ 3726
& 422/3045	≤ 523	¢ 3042/3727	♢ 3727
↗ 472/524	r 523/3013	m 3045	
• 501/3362	s 523/3348	3051	

Backstitch

- 610 inside edges of block
- 315 any area where edges of two lower flowers touch only leaves
- 3726 petals of two lower flowers
- 3726 upper flower and buds
- 3363 any area where leaf edge touches only fabric
- 3362 remainder of leaves
- 3362 stems in border

Diagonal Satin Stitch

- / 3051/3362
- / 3052/3363

GENERAL INFORMATION

Stitch Count: 79w x 429h

Design Size: 5¹/₄" x 30¹/₄"

Our model was stitched on a 12" x 40" piece of Antique White Monaco (28 ct) over 2 fabric threads, using 2 strands of floss for Cross Stitch, 1 strand of each color for Blended Cross Stitch and Diagonal Satin Stitch, and 1 strand for Backstitch and French Knots.

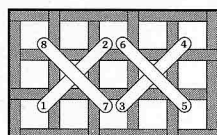
CHART INFORMATION

The color key shows the symbols used for Cross Stitch in the chart. Blended Cross Stitches are indicated by listing two colors together separated by a slash (/). Each symbol on the chart represents one stitch. Backstitch and French Knot instructions are also listed. All Cross Stitch should be worked first, then Backstitch in the order listed. Work Diagonal Satin Stitch and French Knots last.

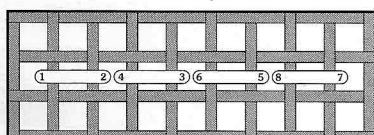
BELLPULL FINISHING

1. Trim stitched piece to 1" from side edges of design and 3¹/₄" from top and bottom edges of design. Cut backing fabric and one piece of fusible interfacing same size as stitched piece. Fuse interfacing to wrong side of backing fabric.
2. Place stitched piece and backing right sides together. Leaving an opening for turning, use a 1/2" seam allowance to sew pieces together. Turn right side out; press. Press top and bottom edges 1¹/₂" to backing side; whipstitch top and bottom edges through backing only. Insert bellpull hardware.

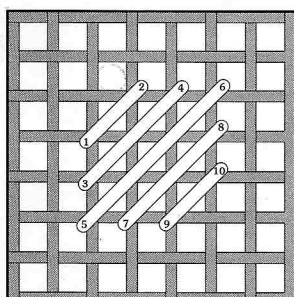
STITCH DIAGRAMS



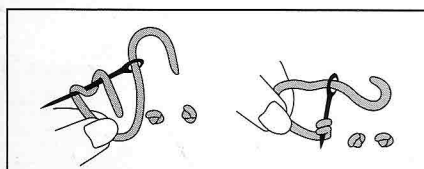
CROSS STITCH



BACKSTITCH



DIAGONAL SATIN STITCH



FRENCH KNOT

COMPLETE FLOSS LIST

The key on each page lists the DMC floss needed to stitch the block on that page. A DMC list for the entire bellpull, along with the Anchor conversion, appears below.

DMC	Anchor	DMC	Anchor
blanc	2	841	378
209	109	842	388
210	108	950	4146
211	342	3011	846
223	895	3012	844
224	893	3013	842
225	1026	3041	871
315	1019	3042	870
316	1017	3045	888
340	118	3051	681
341	117	3052	262
422	943	3064	883
472	253	3345	268
501	878	3346	267
502	877	3347	266
503	876	3348	264
504	1042	3362	263
520	862	3363	262
522	860	3607	87
523	859	3608	86
524	858	3609	85
543	933	3689	49
610	889	3722	1027
611	898	3726	1018
613	831	3727	1016
676	891	3740	872
745	300	3743	869
746	275	3746	1030
762	234	3747	120
775	128	3770	1009
778	968	3772	1007
792	941	3773	1008
793	176	3774	778
794	175	3807	122
840	379	3823	386

We have made every effort to ensure that these instructions are accurate and complete. We cannot, however, be responsible for human error, typographical mistakes, or variations in individual work.

