

CALIFORNIA BLUEBELL

Cross Stitch

DMC	DMC	DMC
R 340/793	∞ 522	∇ 841/3042
X 340/3041	φ 522/3012	● 3012/3363
= 341/794	≤ 523	8 3041/3042
∇ 341/3042	r 523/3013	♡ 3042
.. 341/3747	~ 524	∩ 3042/3743
Q 422	610	3051
● 501/3362	X 611/3045	3052
□ 502/522	762	⬇ 3362/3363
B 502/3363	792	o 3743/3747
⋈ 503/523	● 840/3041	◆ 3746/3807

Backstitch

610	inside edges of block
3807	flower buds
3807	any area where flower edge touches only fabric
792	remainder of flowers
3363	any area where leaf edge touches only fabric
3362	remainder of leaves
840	flower stems
3362	stems in border

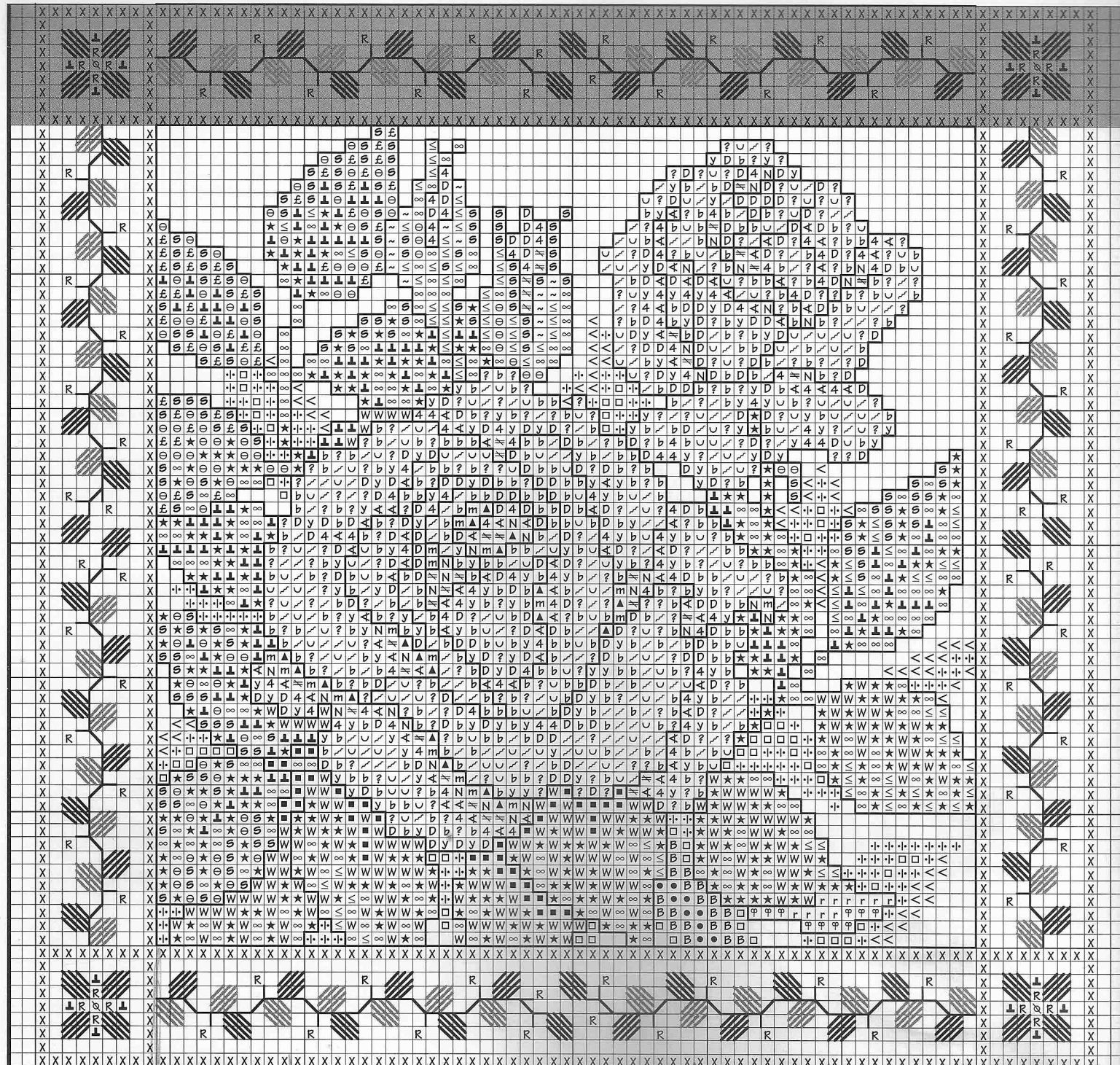
French Knot

* 762

Diagonal Satin Stitch

✓ 3051/3362
✓ 3052/3363

Shaded rows indicate overlap from previous section.



ROSE

Cross Stitch

DMC	DMC	DMC
R 340/793	≤ 523	U 746/3770
Q 422	r 523/3013	▲ 3041/3045
N 422/3042	s 523/3348	m 3045
● 501/3362	~ 524	3051
□ 502/522	610	3052
B 502/3363	X 611/3045	£ 3346/3363
· 503/523	4 676	W 3362
< 504/524	≠ 676/3045	⬇ 3362/3363
■ 520	4 676/3773	★ 3363
∞ 522	D 745	? 3774/3823
φ 522/3012	y 745/950	b 3823
○ 522/3347	746	

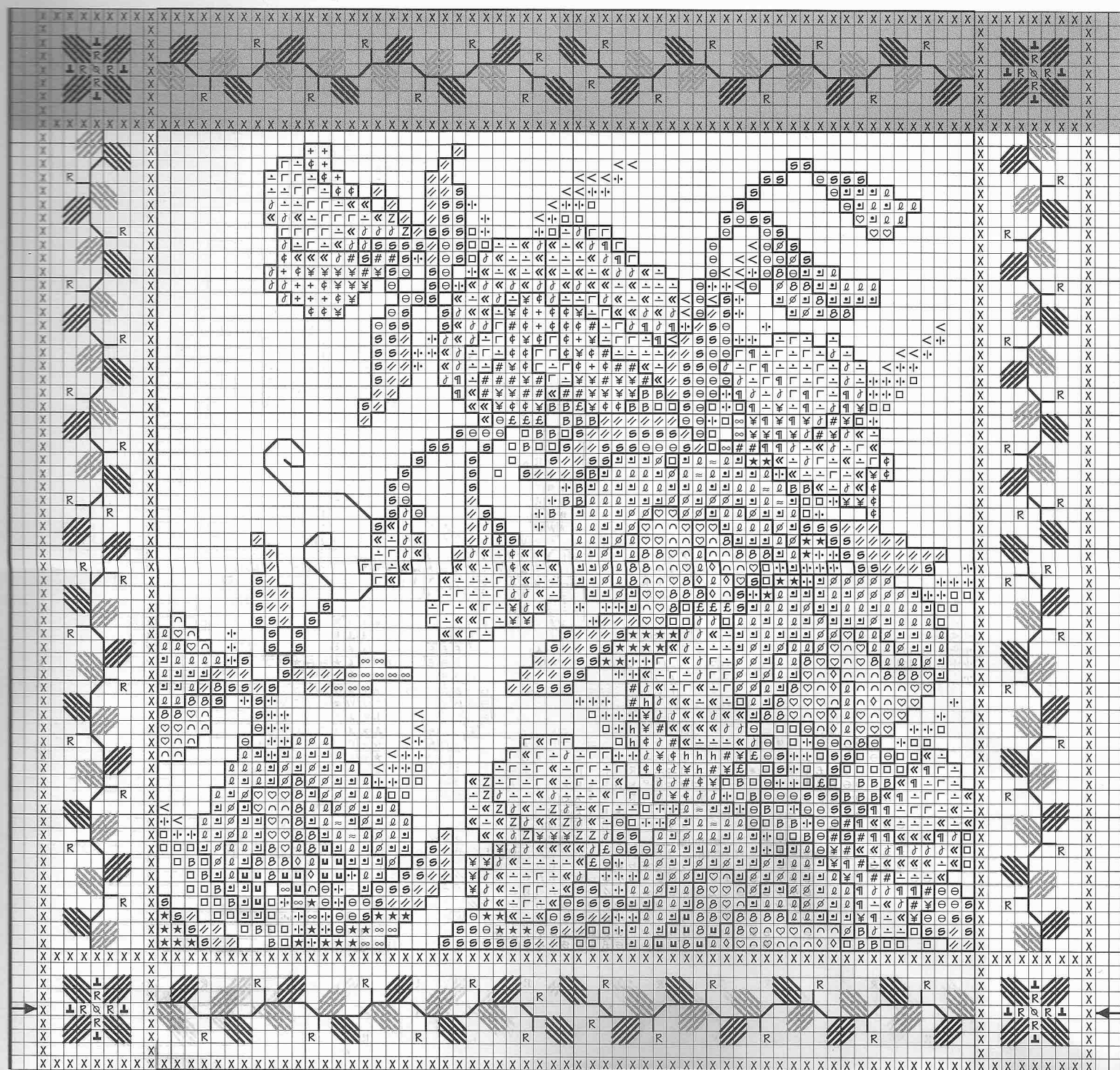
Backstitch

610	inside edges of block
3045	roses and buds <i>rose & georgina</i>
3363	any area where leaf edge touches only fabric
3362	remainder of leaves
3362	stems in border

Diagonal Satin Stitch

/ 3051/3362
/ 3052/3363

Shaded rows indicate overlap from previous section.



SWEET PEA

Cross Stitch

DMC	DMC	DMC
Ø 209/3041	□ 502/522	h 3041/3726
▤ 210/3042	B 502/3363	♥ 3042
≈ 211	⋄ 503/523	¢ 3042/3727
∅ 211/3743	< 504/524	∩ 3042/3743
Γ 225	∞ 522	3051
÷ 225/778	⊖ 522/3347	3052
Z 316	s 523/3348	£ 3346/3363
# 316/3041	610	⬇ 3362/3363
¥ 316/3042	X 611/3045	★ 3363
¶ 316/3727	« 778	3726
R 340/793	+ 778/3743	♢ 3727
⌘ 422	■ 3041	3740
↗ 472/524	B 3041/3042	◇ 3743

Backstitch

610	inside edges of block
3726	pink flowers <i>for a case</i>
3041	any area where edge of purple flower touches only fabric
3740	remainder of purple flowers
3363	tendrils
3362	leaves and stems <i>for a case</i>
3362	stems in border

Diagonal Satin Stitch

↗ 3051/3362
↘ 3052/3363