

Heaven and Earth Designs

Stolen

Chart No: HAERM 023

By Michele Sayetta

Artwork by Rachel Marks



Finished Design Size 350 W by 237 H (14 W X 9-3/8 H inches on 25ct fabric)

Heaven and Earth Designs

1373 45th Ave SW

Willmar MN 56201

320-214-7998

www.heavenandearthdesigns.com

Copyright Heaven and Earth Designs 2008

Copyright Rachel Marks 2008

Instructions

The model for Stolen is recommended to be stitched over 1 on 25ct, Linen or Evenweave may be used. You may use 1 or 2 strands of floss depending on your preference.

It is recommended that you make working copies and enlarge to view detail and symbols.

We also suggest using a #28 needle when working over 1 on 25ct.

This is a large project that will offer many hours of stitching pleasure.











We thank you for purchasing this design and welcome any questions or comments that you may have.

*Heaven and Earth Designs
320-214-7998*

[Http://www.heavenandearthdesigns.com](http://www.heavenandearthdesigns.com)

Pattern Name: Stolen-Marks
Designed By: Michele Sayetta
Company: Heaven and Earth Designs
Copyright: 2008
Fabric: Linen 25, White
 350w X 237h Stitches
Size: 25 Count, 14w X 9-3/8h in

Floss Used for Full Stitches:

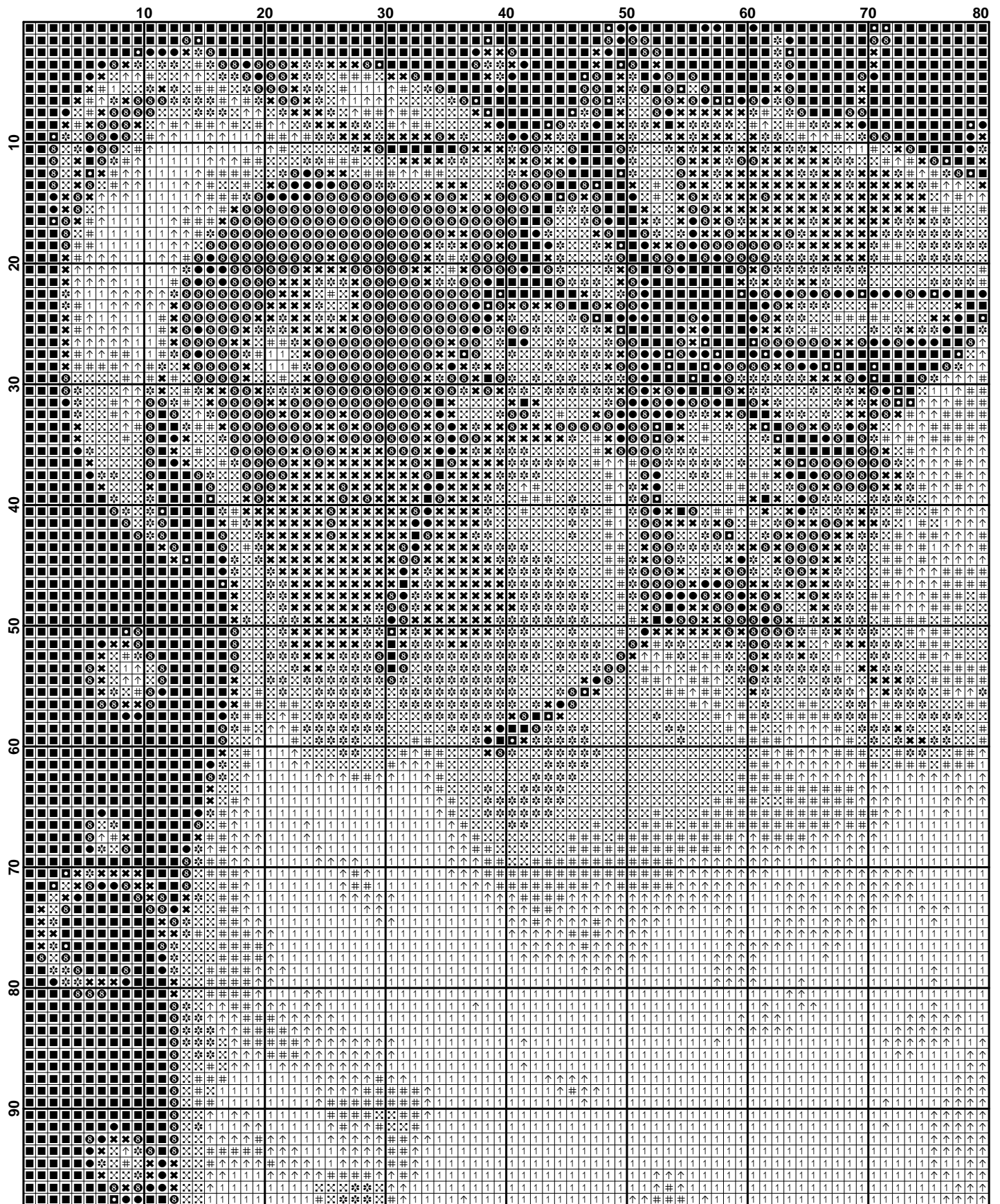
Symbol	Strands	Type	Number	Color
	1	2	DMC 032	Kreinik #4
	■	2	DMC 310	Black
	✱	2	DMC 318	Steel Gray-LT
	⑧	2	DMC 413	Pewter Gray-DK
	✕	2	DMC 414	Steel Gray-DK
	✕	2	DMC 415	Pearl Gray
	↑	2	DMC 762	Pearl Gray-VYLT
	●	2	DMC 934	Black Avocado Green
	#	2	DMC 3072	Beaver Gray-VYLT
	◼	2	DMC 3371	Black Brown

Usage Summary

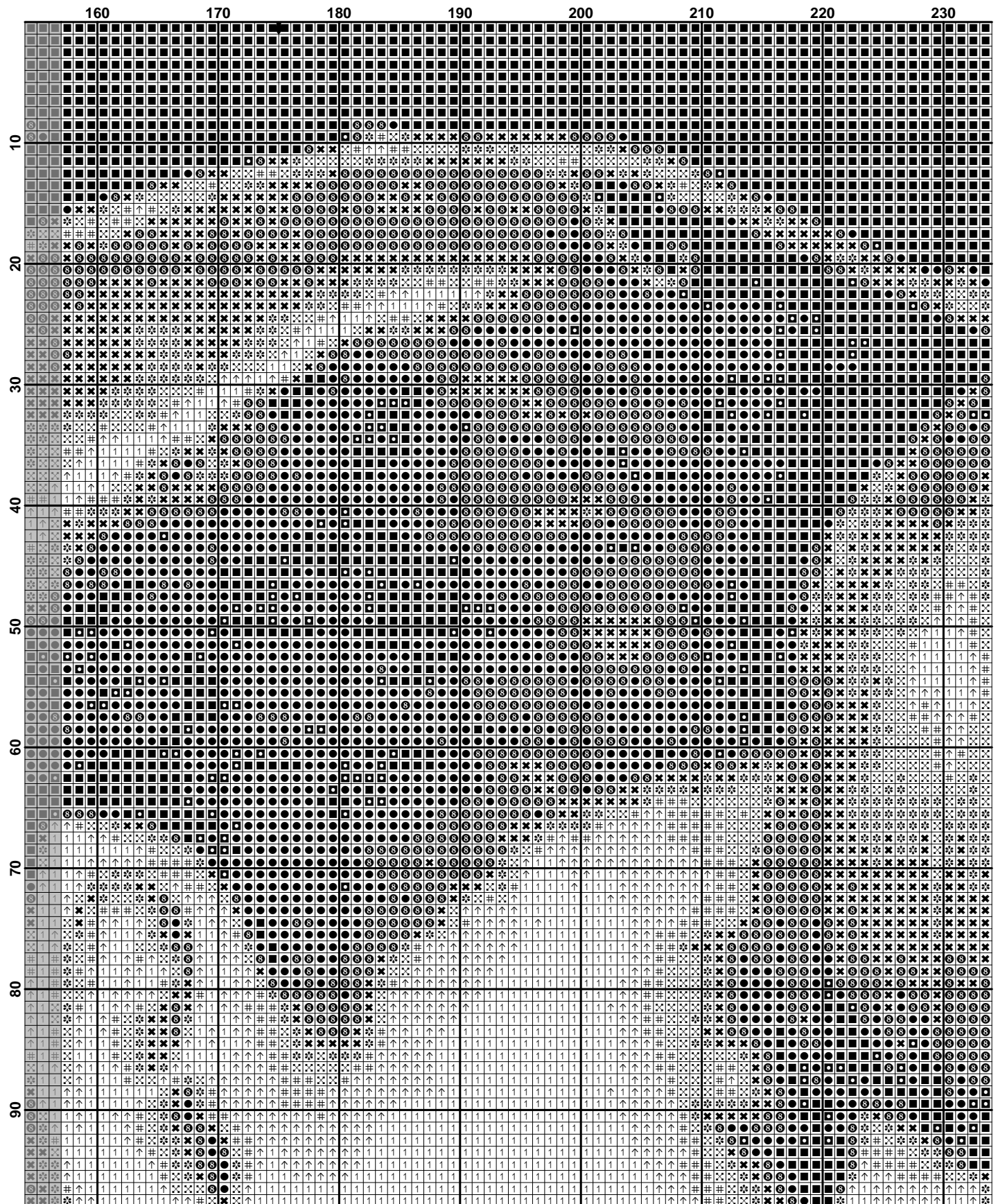
Strands Per Skein: 6

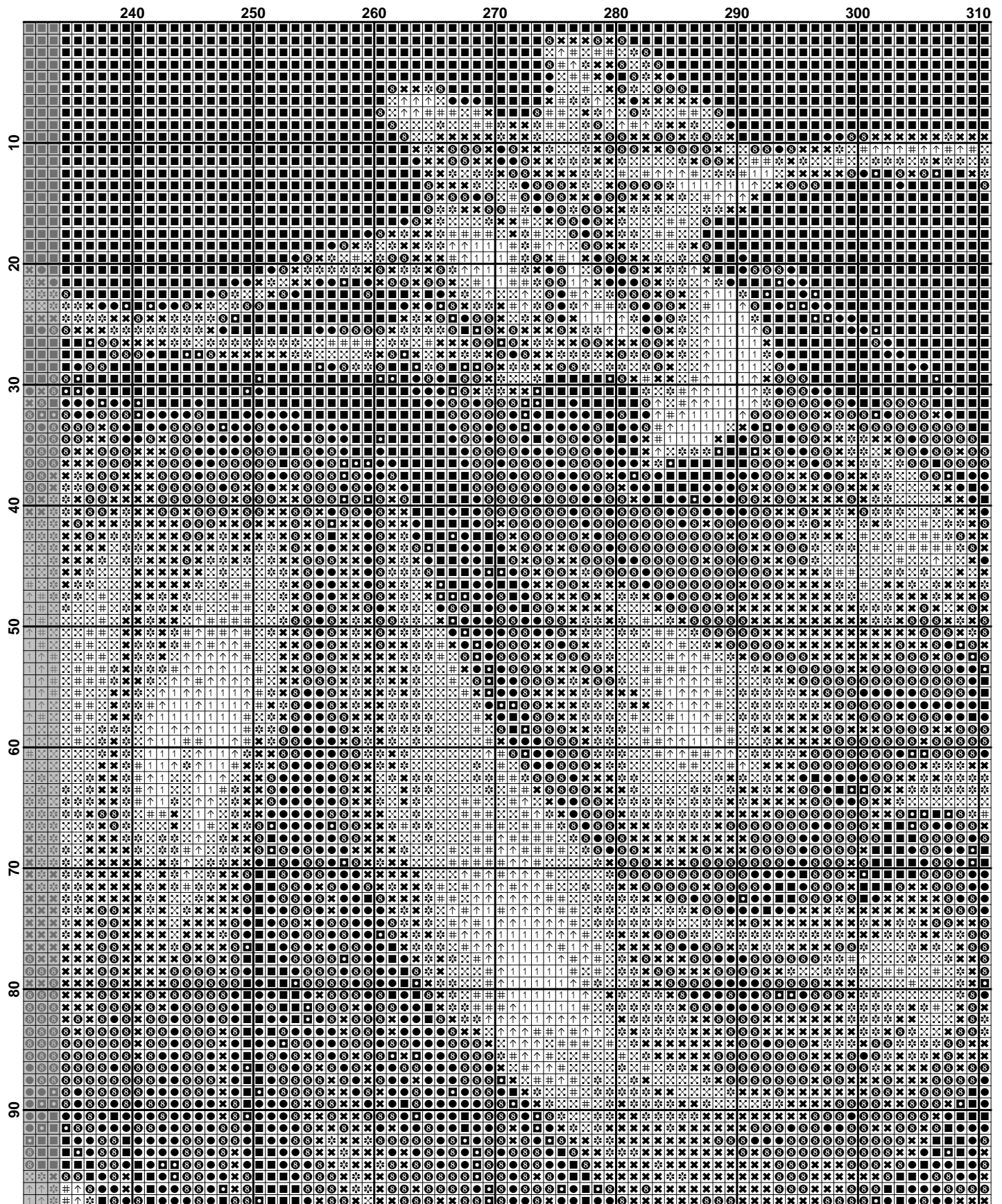
Skein Length: 313.0 in

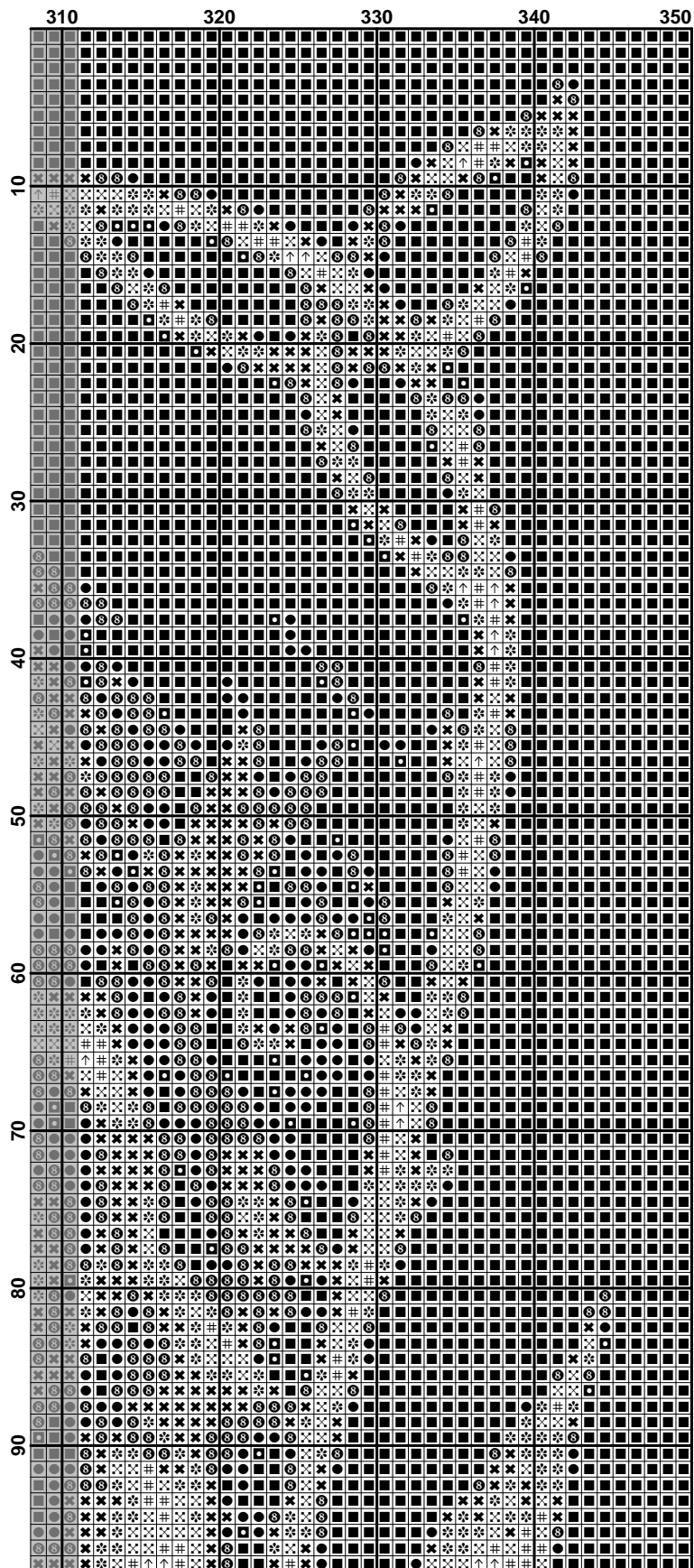
Type	Number	Full	Half	Quarter	Petite	Back(in)	Str(in)	Spec(in)	French	Bead	Skein Est.
□ DMC	032	16999	0	0	0	0.0	0.0	0.0	0	0	5.000
■ DMC	310	17869	0	0	0	0.0	0.0	0.0	0	0	5.000
■ DMC	318	6616	0	0	0	0.0	0.0	0.0	0	0	2.000
■ DMC	413	9982	0	0	0	0.0	0.0	0.0	0	0	3.000
■ DMC	414	8106	0	0	0	0.0	0.0	0.0	0	0	3.000
■ DMC	415	6342	0	0	0	0.0	0.0	0.0	0	0	2.000
■ DMC	762	6171	0	0	0	0.0	0.0	0.0	0	0	2.000
■ DMC	934	5176	0	0	0	0.0	0.0	0.0	0	0	2.000
■ DMC	3072	4795	0	0	0	0.0	0.0	0.0	0	0	2.000
■ DMC	3371	894	0	0	0	0.0	0.0	0.0	0	0	1.000



	80	90	100	110	120	130	140	150
10								
20								
30								
40								
50								
60								
70								
80								
90								





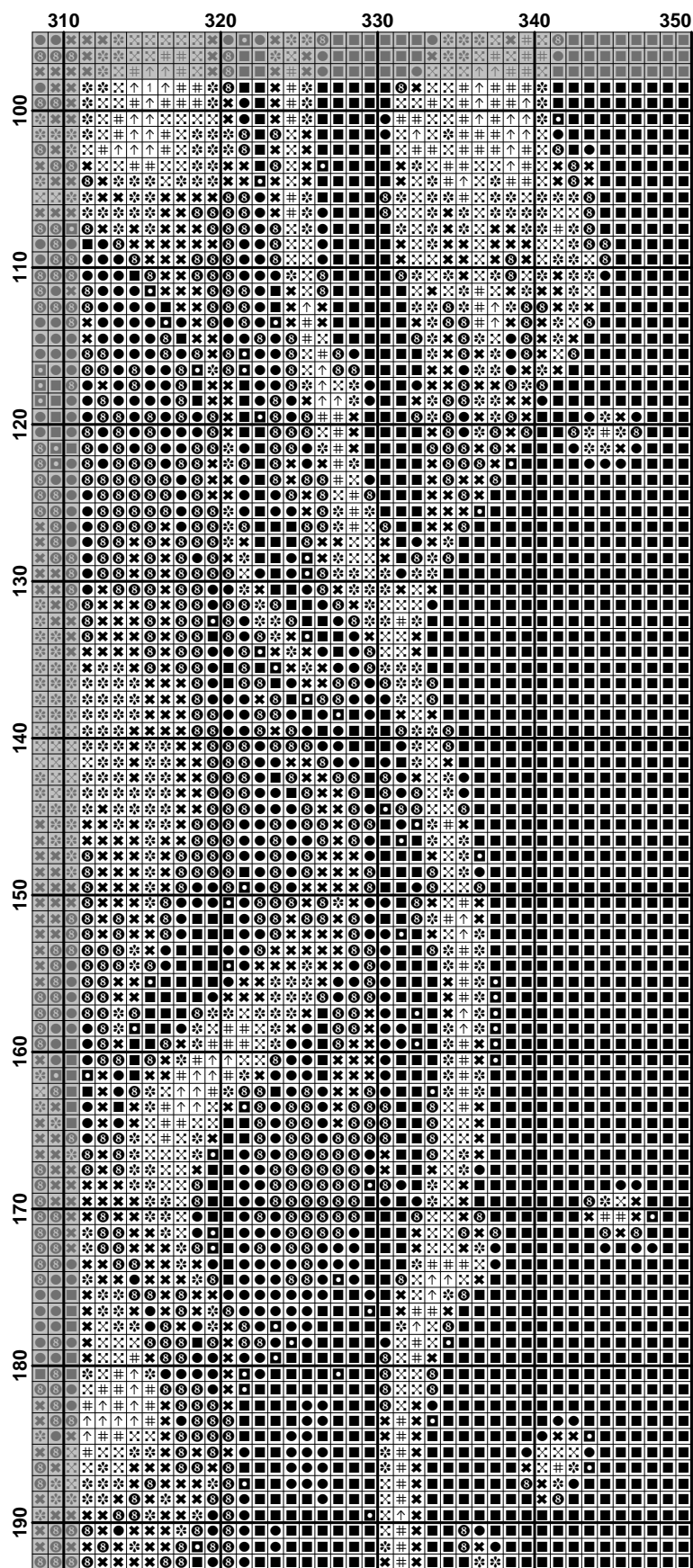


	10	20	30	40	50	60	70	80
100								
110								
120								
130								
140								
150								
160								
170								
180								
190								

	80	90	100	110	120	130	140	150
100
110
120
130
140
150
160
170
180
190

	160	170	180	190	200	210	220	230
100								
110								
120								
130								
140								
150								
160								
170								
180								
190								

	240	250	260	270	280	290	300	310
100
110
120
130
140
150
160
170
180
190



	10	20	30	40	50	60	70	80
190								
200								
210								
220								
230								

	80	90	100	110	120	130	140	150
190								
200								
210								
220								
230								



