



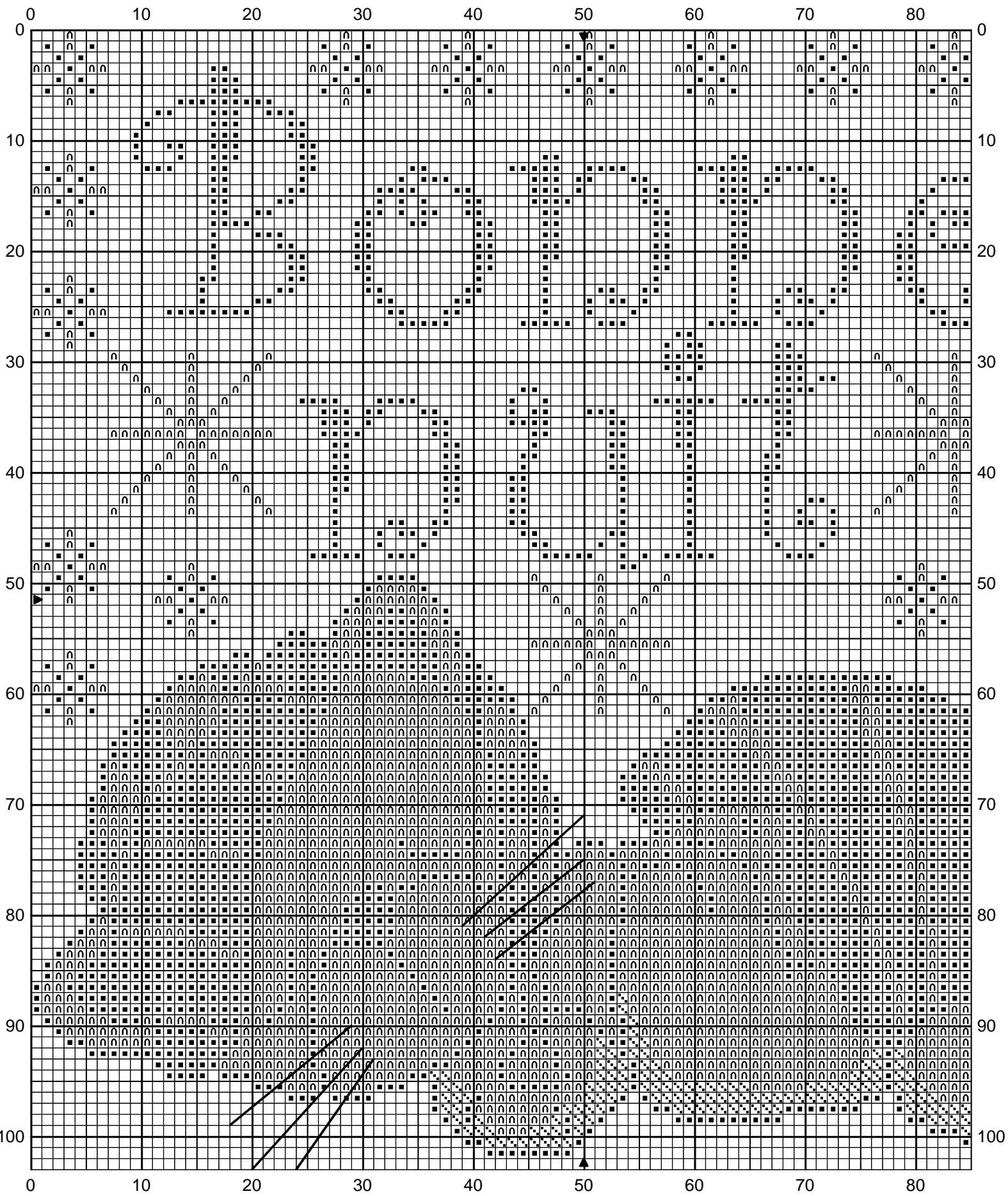
Ref:BNCLPP 64

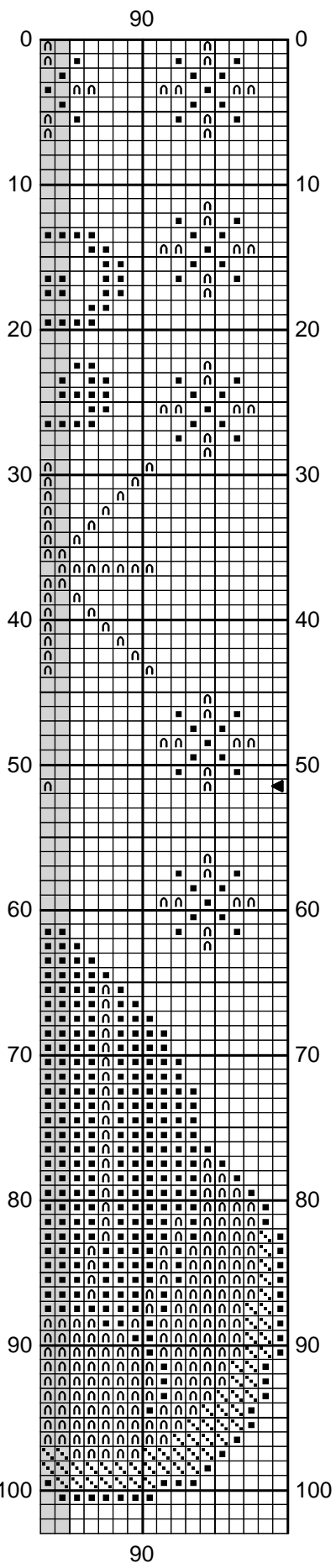
D'après dessins clipartopolis

Dimensions du dessin

14cm par 15,5cm toile 7 points

18cm par 19cm toile 5.5 points






Bonne nuit



White bright	DMC B5200	71 cm	0.88 8m Skeins
Red vy dk	498	87 cm	1.08 8m Skeins
Ecru	ECRU	7 cm	0.09 8m Skeins

Backstitch in:

 Pewter Grey dk 413 0.6 cm 0.01 8m Skeins

Stitch Count 100 x 103

Design Area 18.1 x 18.7 cm at 55 sts per 10cm

16.6 x 17.1 cm at 60 sts per 10cm

14.1 x 14.5 cm at 71 sts per 10cm

Note: à broder sur toile bise

Copyright © By: jean-louis grandsire ---- www.broderie.net ----