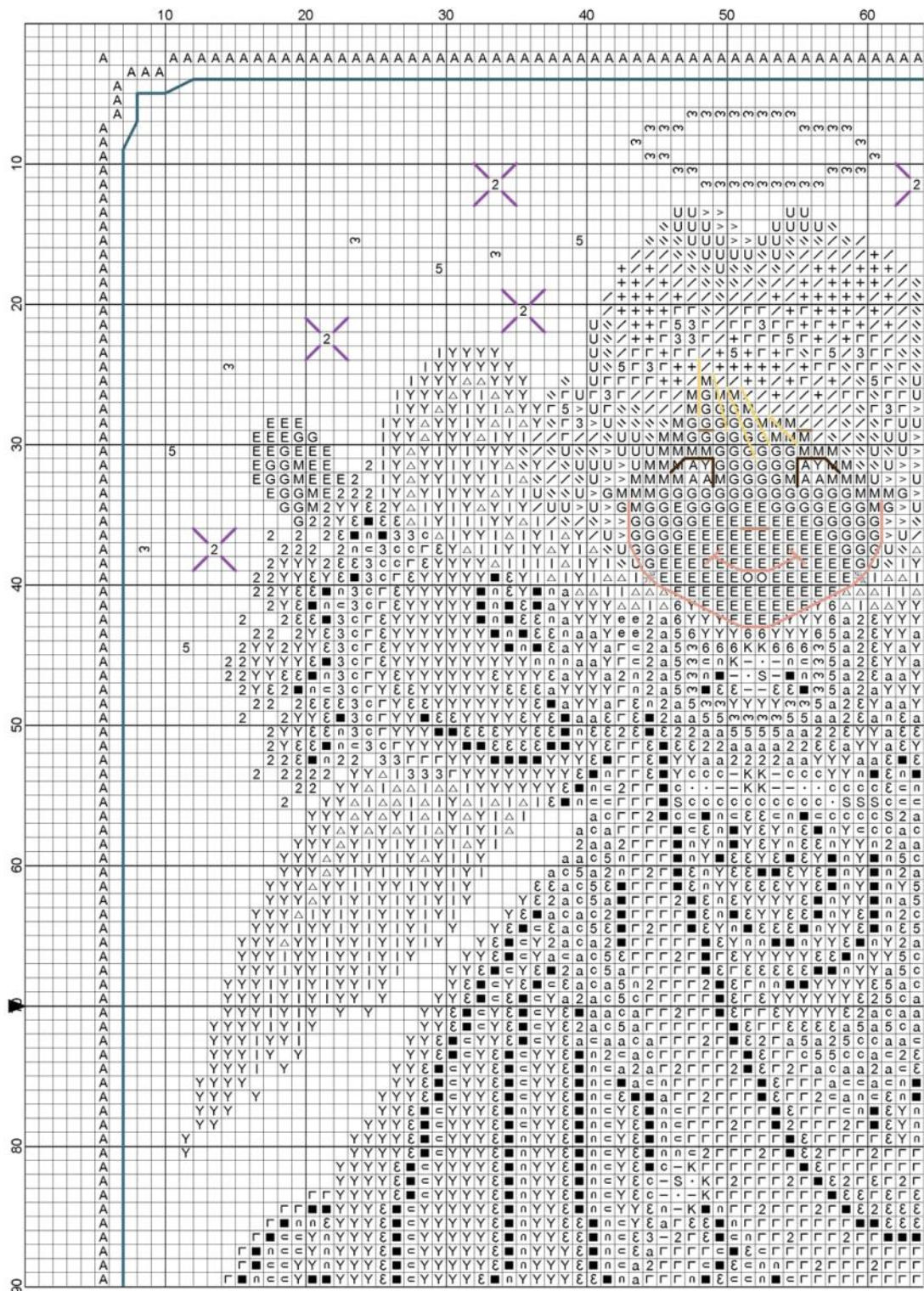
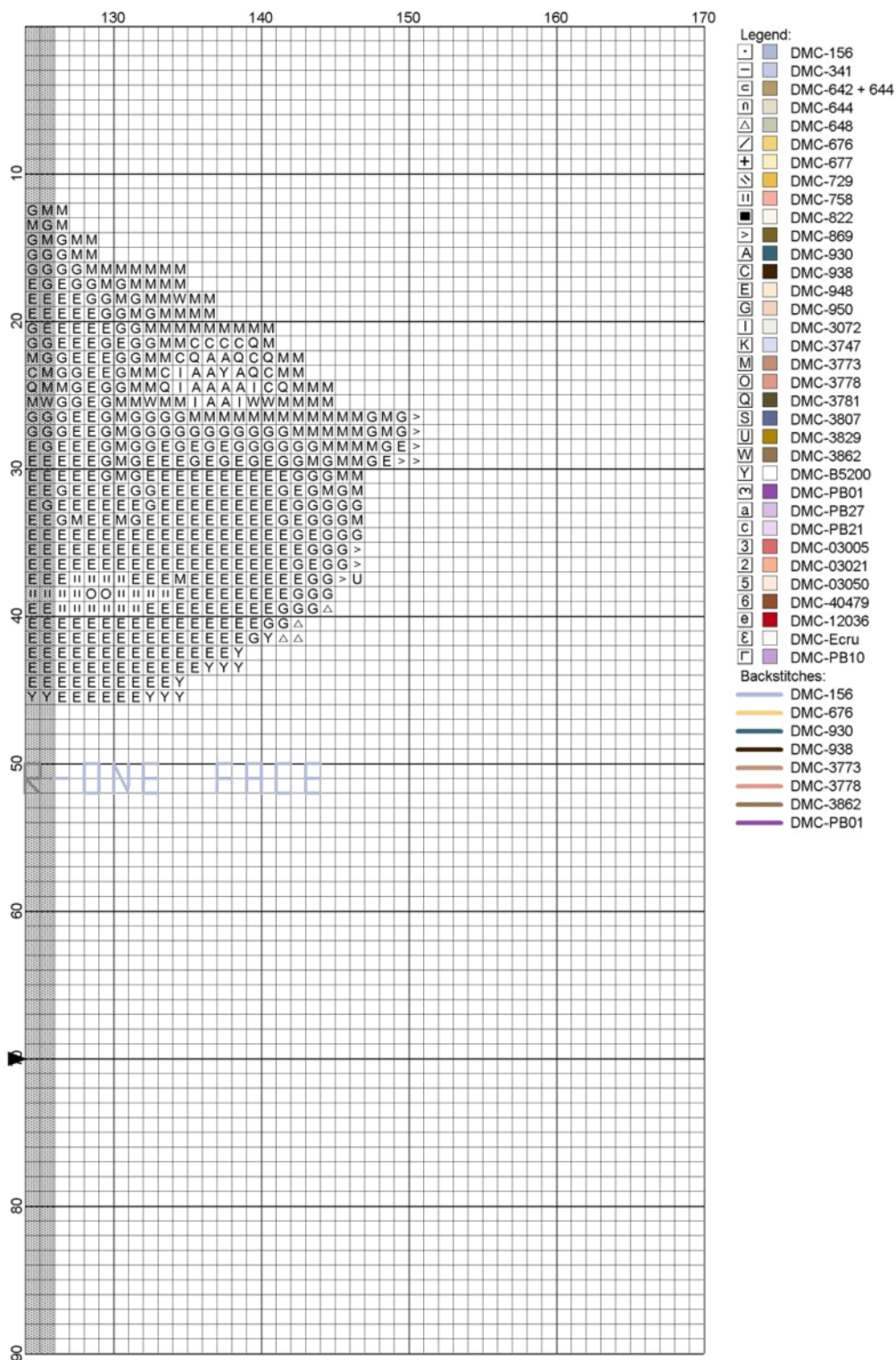


BR 16 - Angel girl by Marilyn Leavitt-Imblum

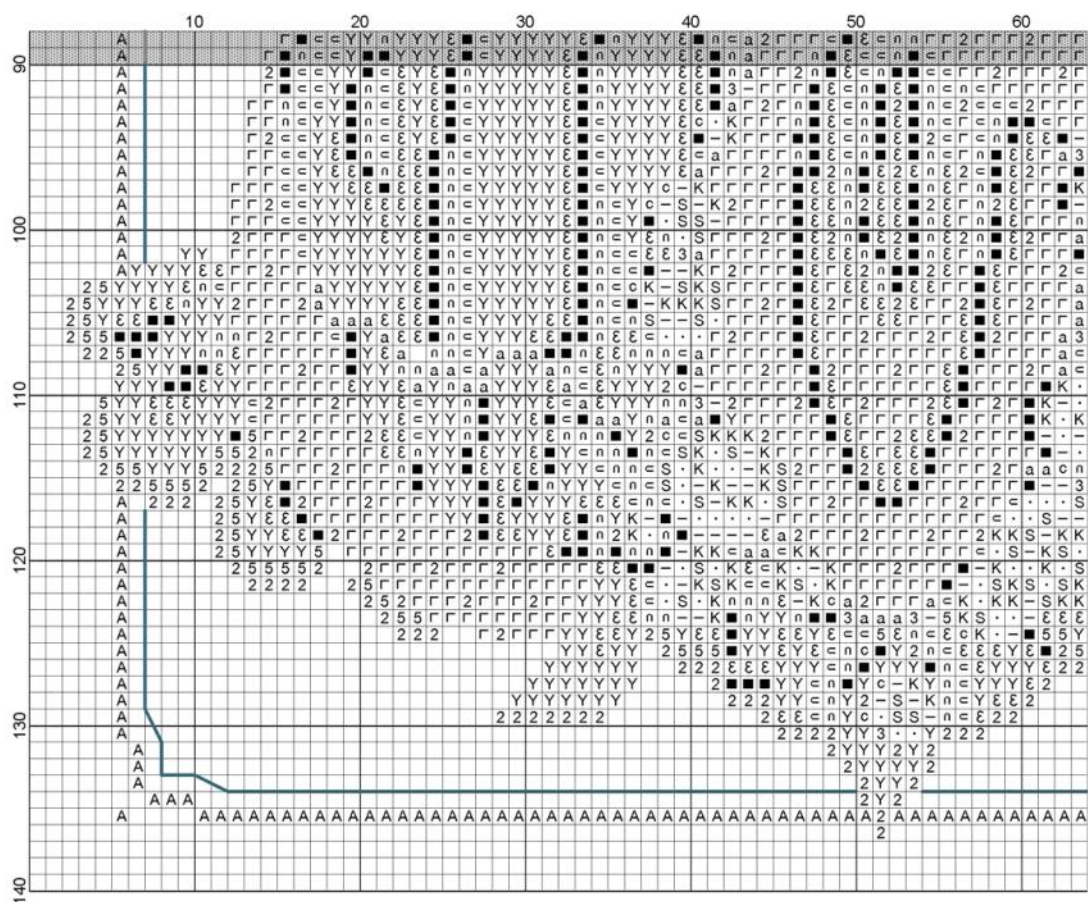


The image shows a grid-in response area for a math test. The grid is 10 rows by 120 columns. The rows are labeled 1 through 10 on the left side. The columns are labeled 70 through 120 at the top. The grid contains various markings, including purple 'X' marks, blue lines, and handwritten numbers. A large 'OVER' watermark is visible in the bottom right corner.

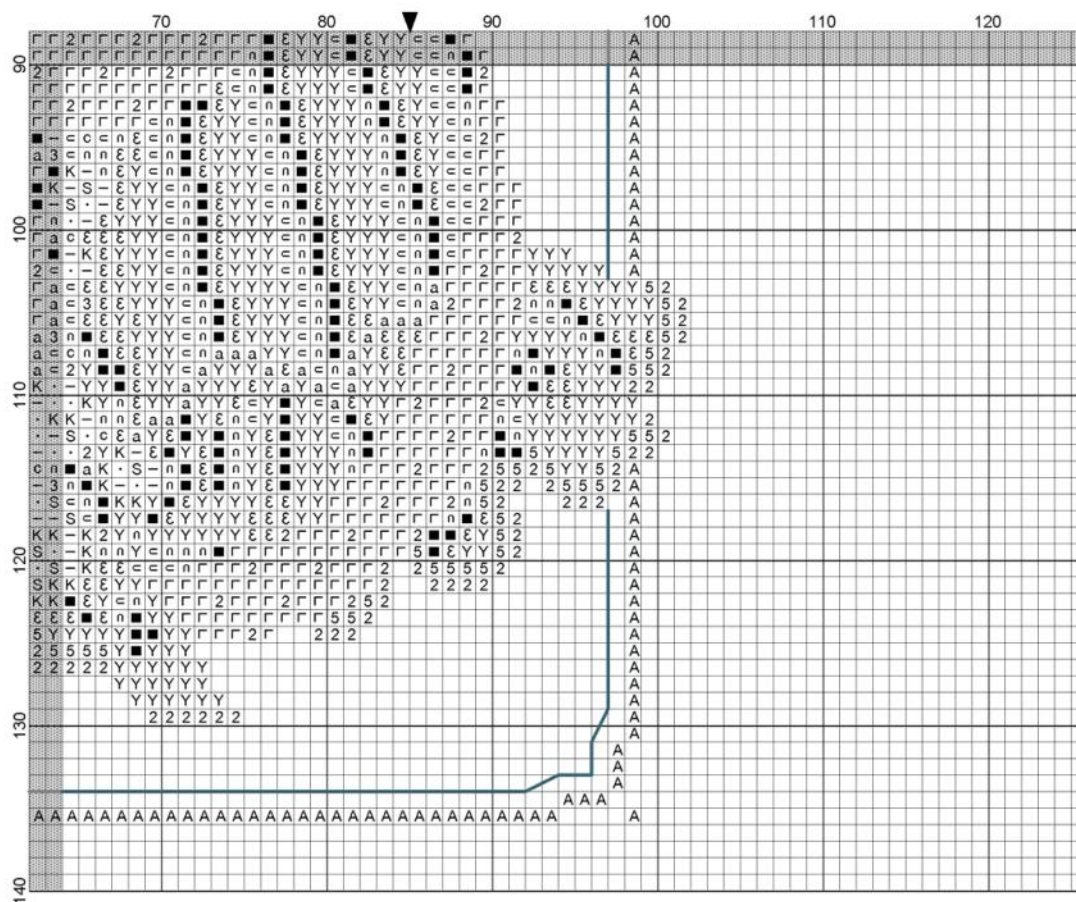
BR 16 - Angel girl by Marilyn Leavitt-Imblum

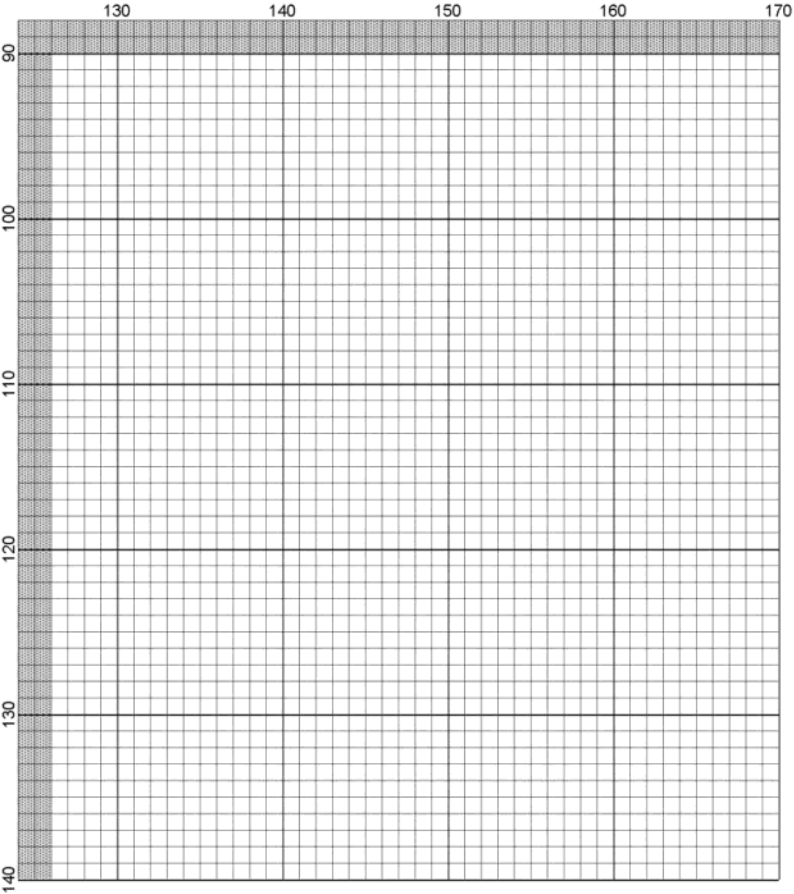


BR 16 - Angel girl by Marilyn Leavitt-Imblum



BR 16 - Angel girl by Marilyn Leavitt-Imblum





BR 16 - Angel girl

Author: Marilyn Leavitt-Imblum
Fabric: BUTTERNUT ROAD
Grid Size: 170W x 140H
Design Area: 10,64" x 9,64" (149 x 135 stitches)

Legend:

[2]	DMC	156	black
[2]	DMC	341	blue violet - lt
[2]	DMC	642 + 644	beige gray - dk
[2]	DMC	644	beige gray - md
[2]	DMC	648	beaver gray - lt
[2]	DMC	676	old gold - lt
[2]	DMC	677	old gold - vy lt
[2]	DMC	729	old gold - md
[2]	DMC	758	terra cotta - vy lt
[2]	DMC	822	beige gray - lt
[2]	DMC	869	hazel nut brown - vy dk
[2]	DMC	930	antique blue - dk
[2]	DMC	938	coffee brown - ul dk
[2]	DMC	948	peach - vy lt
[2]	DMC	950	desert sand - lt
[2]	DMC	3072	beaver gray - vy lt
[2]	DMC	3747	blue violet - vy lt

[2]	DMC	3773	desert sand - md
[2]	DMC	3778	terra cotta - lt
[2]	DMC	3781	mocha brown - dk
[2]	DMC	3807	cornflower blue
[2]	DMC	3829	old gold - vy dk
[2]	DMC	3862	mocha beige - dk
[2]	DMC	B5200	snow white
[2]	DMC	PB01	lavender - vy dk
[2]	DMC	PB27	lavender - md
[2]	DMC	PB21	lavender - lt
[2]	DMC	03005	shell pink - lt
[2]	DMC	03021	shell pink - vy lt
[2]	DMC	03050	shell pink - ul vy lt
[2]	DMC	40479	mahogany - vy dk
[2]	DMC	12036	christmas red - md
[2]	DMC	Ecru	ecru
[2]	DMC	PB10	lavender - dk

Backstitch Lines:

DMC-156	black	DMC-938	coffee brown - ul dk	DMC-3862	mocha beige - dk
DMC-676	old gold - lt	DMC-3773	desert sand - md	DMC-PB01	lavender - vy dk
DMC-930	antique blue - dk	DMC-3778	terra cotta - lt		

Stitched on 28 count Smokey Pearl Cashel linen (no.3281/778/55) from Zweigart.

Frame (No. 389-183) from Larson-Juhl.

Stitch count: 100W x 134H

Design size:

14-count (28-count linen) 7 1/8" x 9 1/2"

16-count (32-count linen) 6 1/4" x 8 3/8"

18-count (36-count linen) 5 3/8" x 7 1/2"

PB01 - PB10 - PB27 - PB21: [Rainbow Gallery Petite Treasure Braid](#)

03005 - 03021 - 03050 - 40479: [Mill Hill Beads](#)

12036: [Mill Hill Treasure](#)

642+644: one strand of each

938: over-one face only

3781: over-one face only

3862: over-one face only

Stitching Instructions

- Optional over-one face should be done first to ensure accurate placement of stitches. Use one strand of floss for over-one face stitches.

Do not backstitch over-one face

- Cross stitch over 2 fabric threads.

- Use 2 strands of floss.

- Use 2 strands of Petite Treasure Braid.

- Bead symbols are numbers. Attach beads with 2 strands of matching floss.

Backstitch Instructions

- Use one strand unless otherwise indicated.

- Bangs in 676 (2 strands)

- Stars in PB01.
- Border in 930.
- Eyebrows on over-two face in 3862 (2 strands).
- Eyes on over-two face in 938 (2 strands).
- Nose on over-two face in 3773 (2 strands).
- Mouth and face on over-two face in 3778.