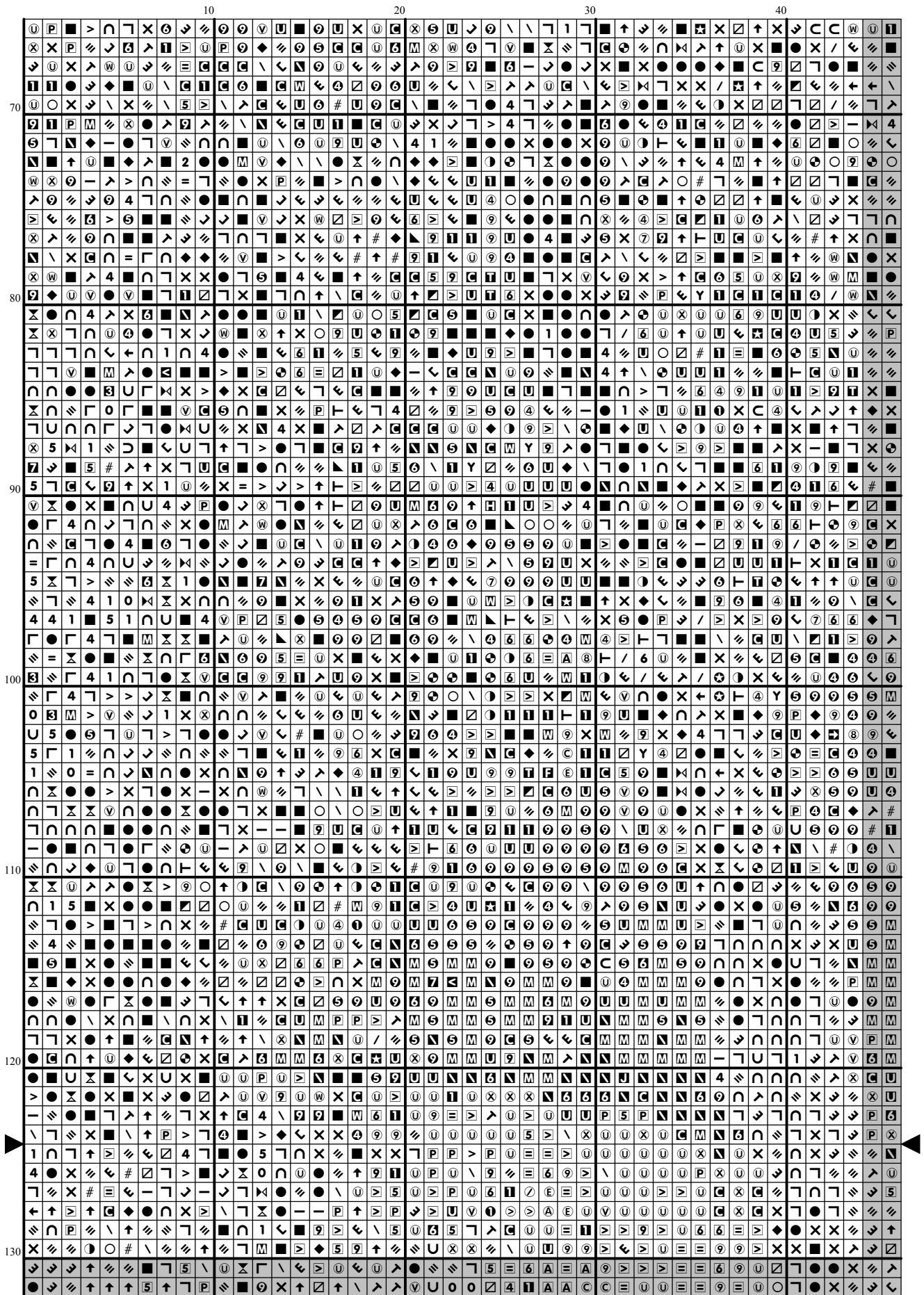
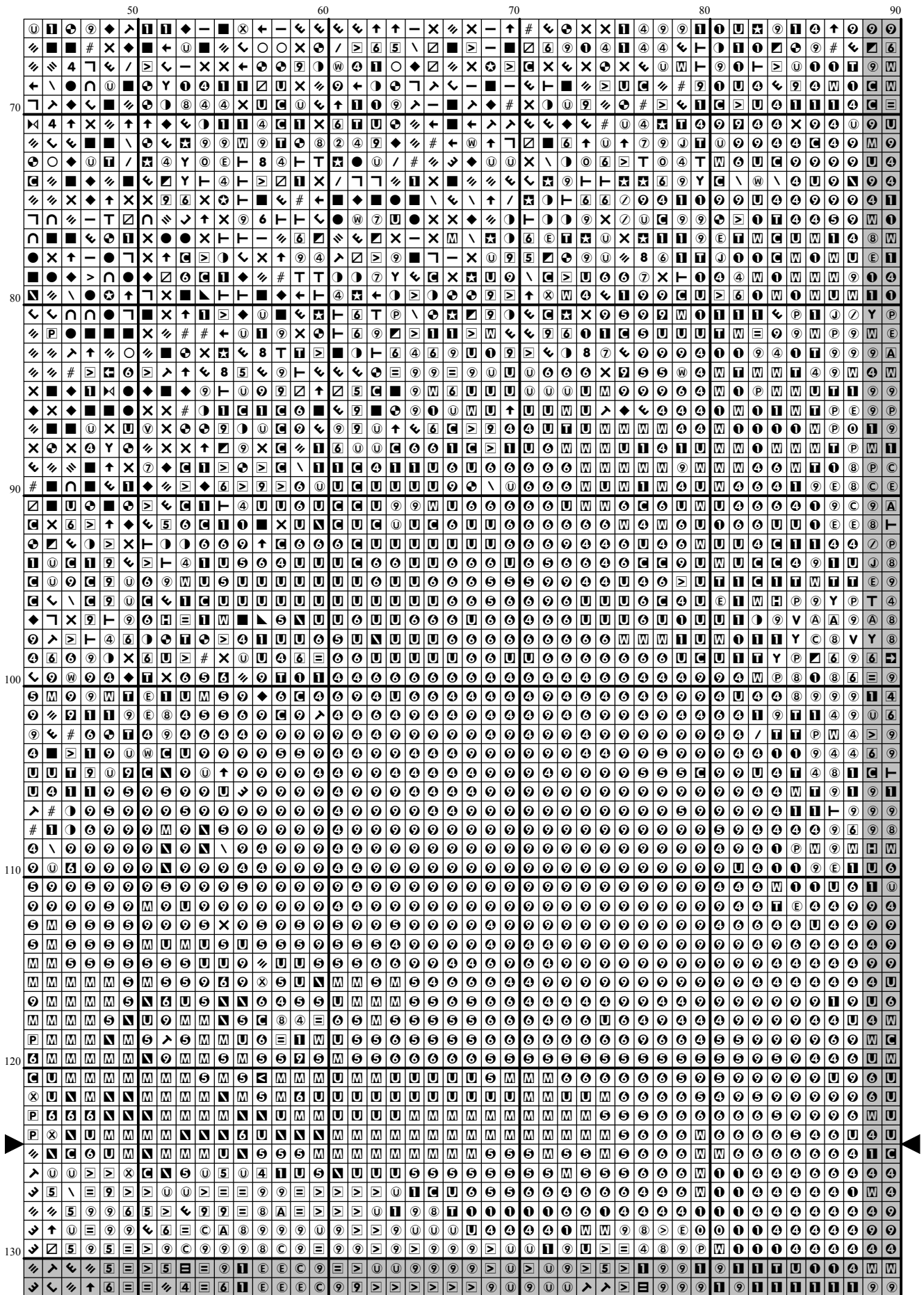
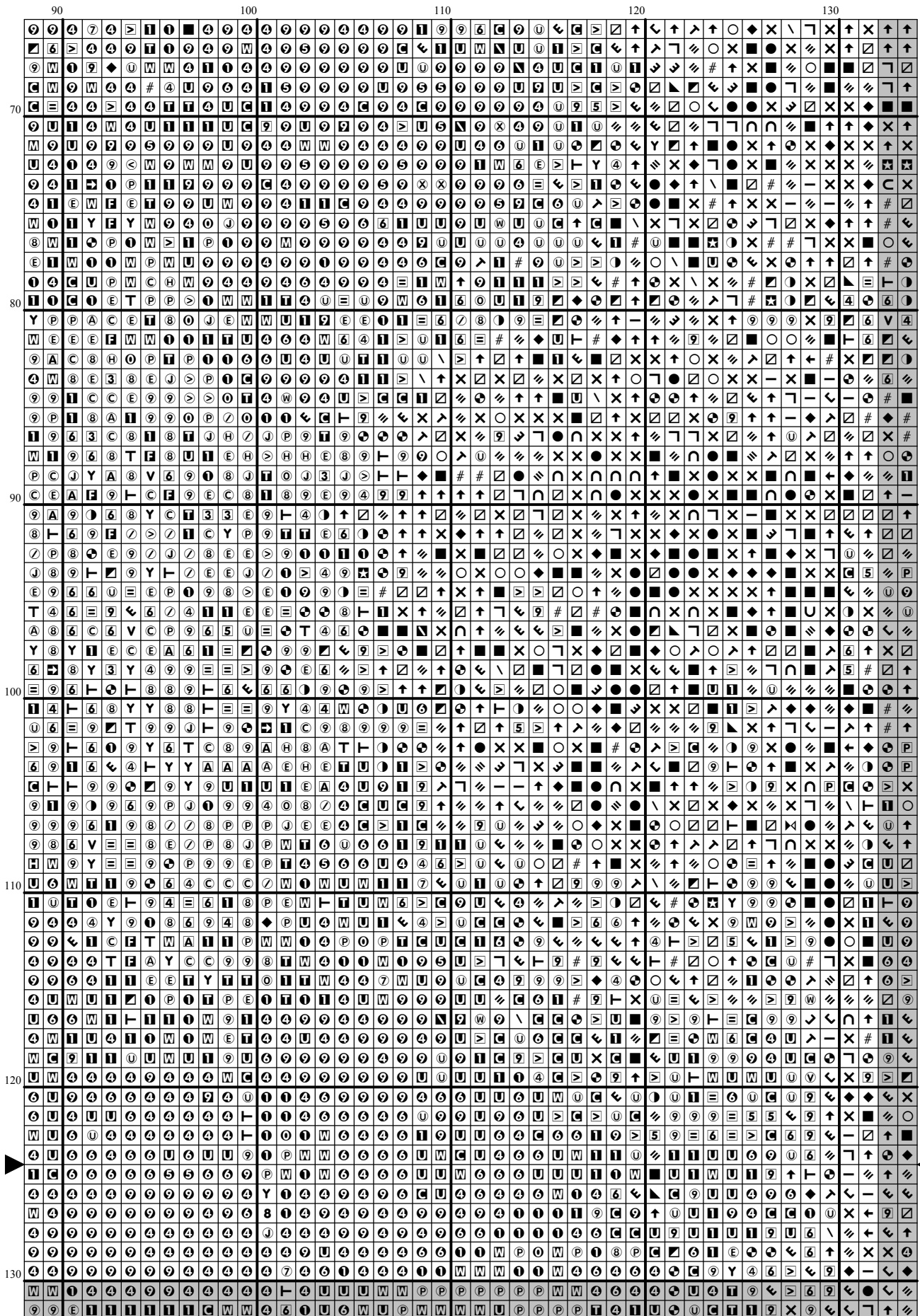


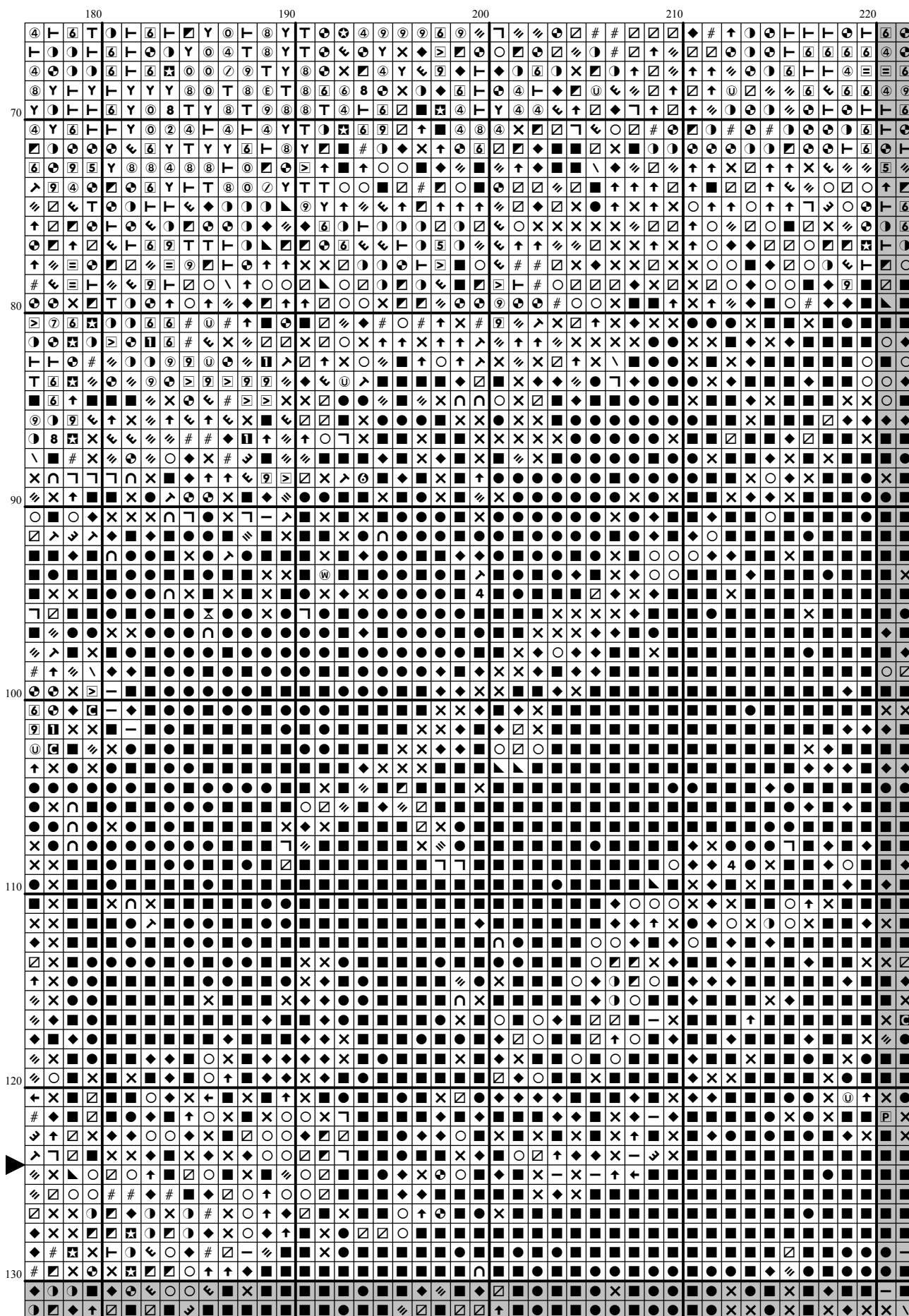
[illegible]

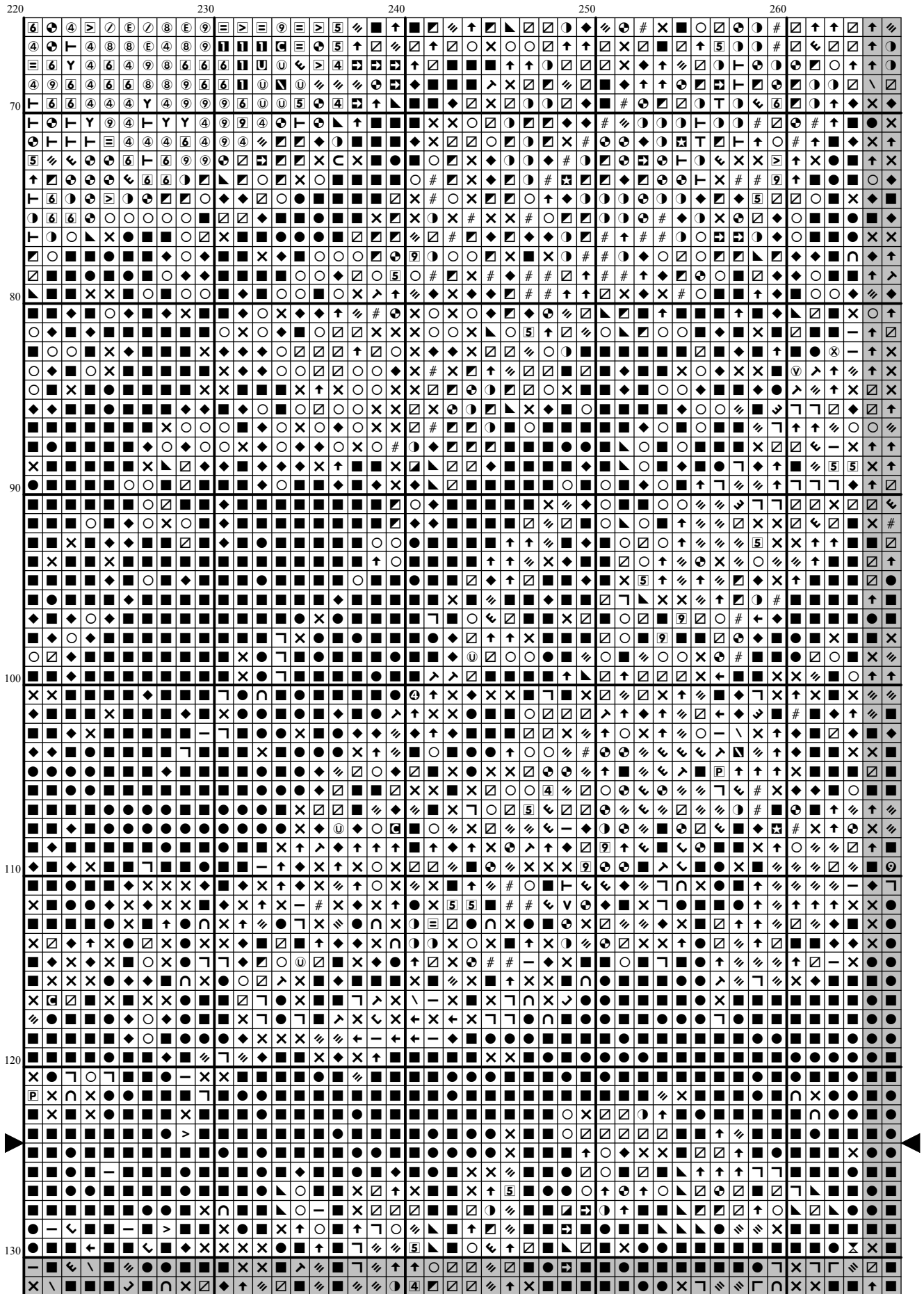


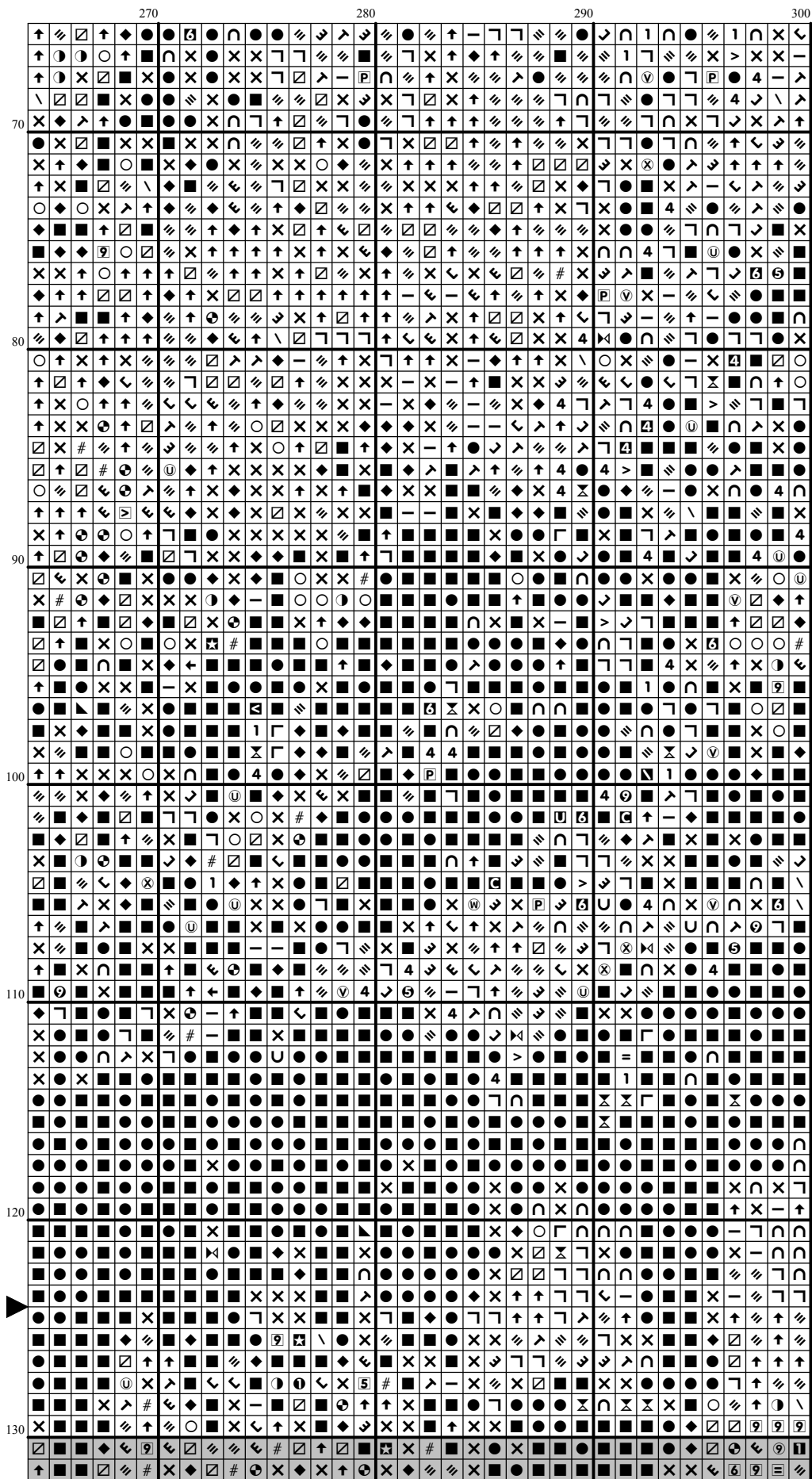


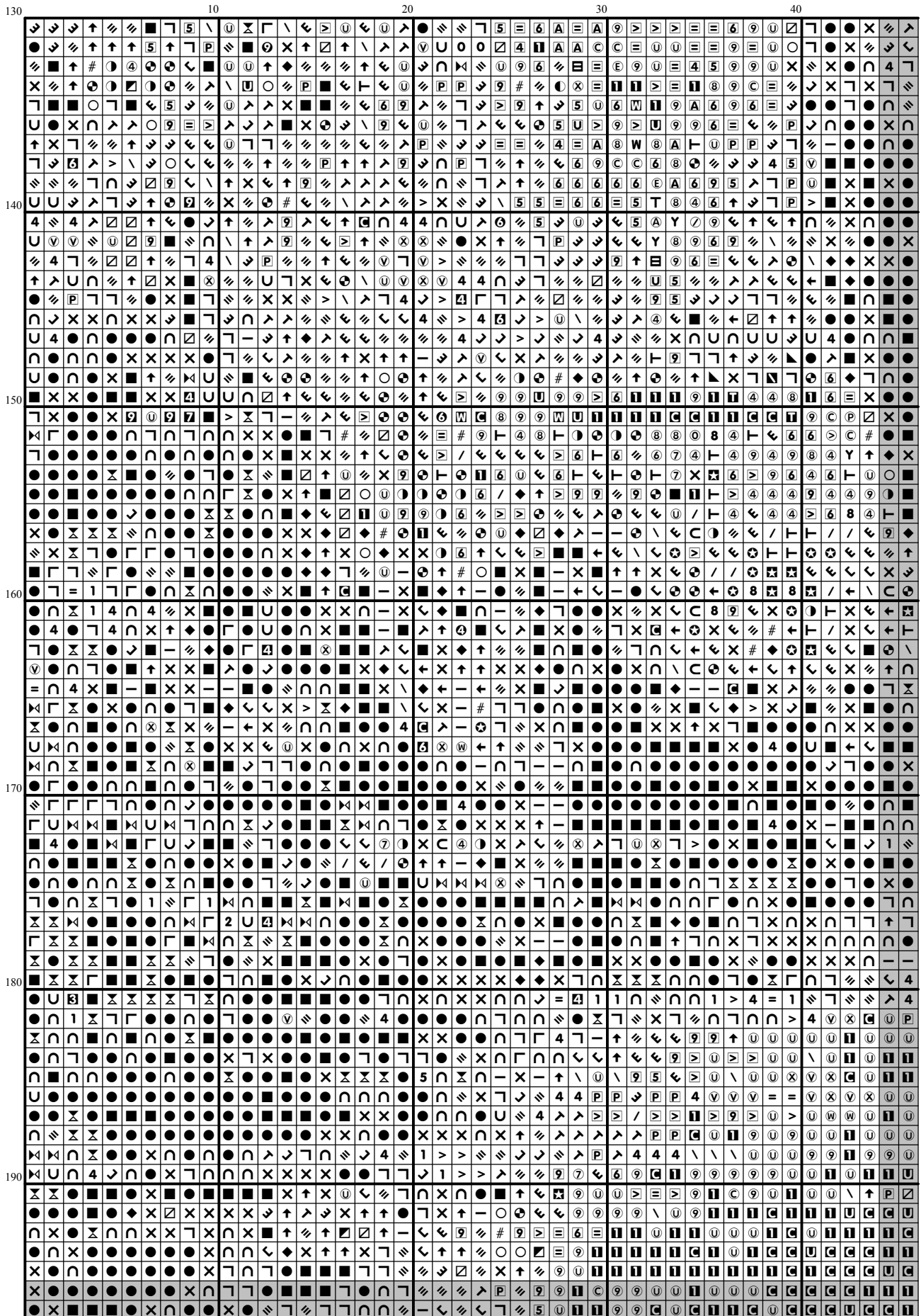


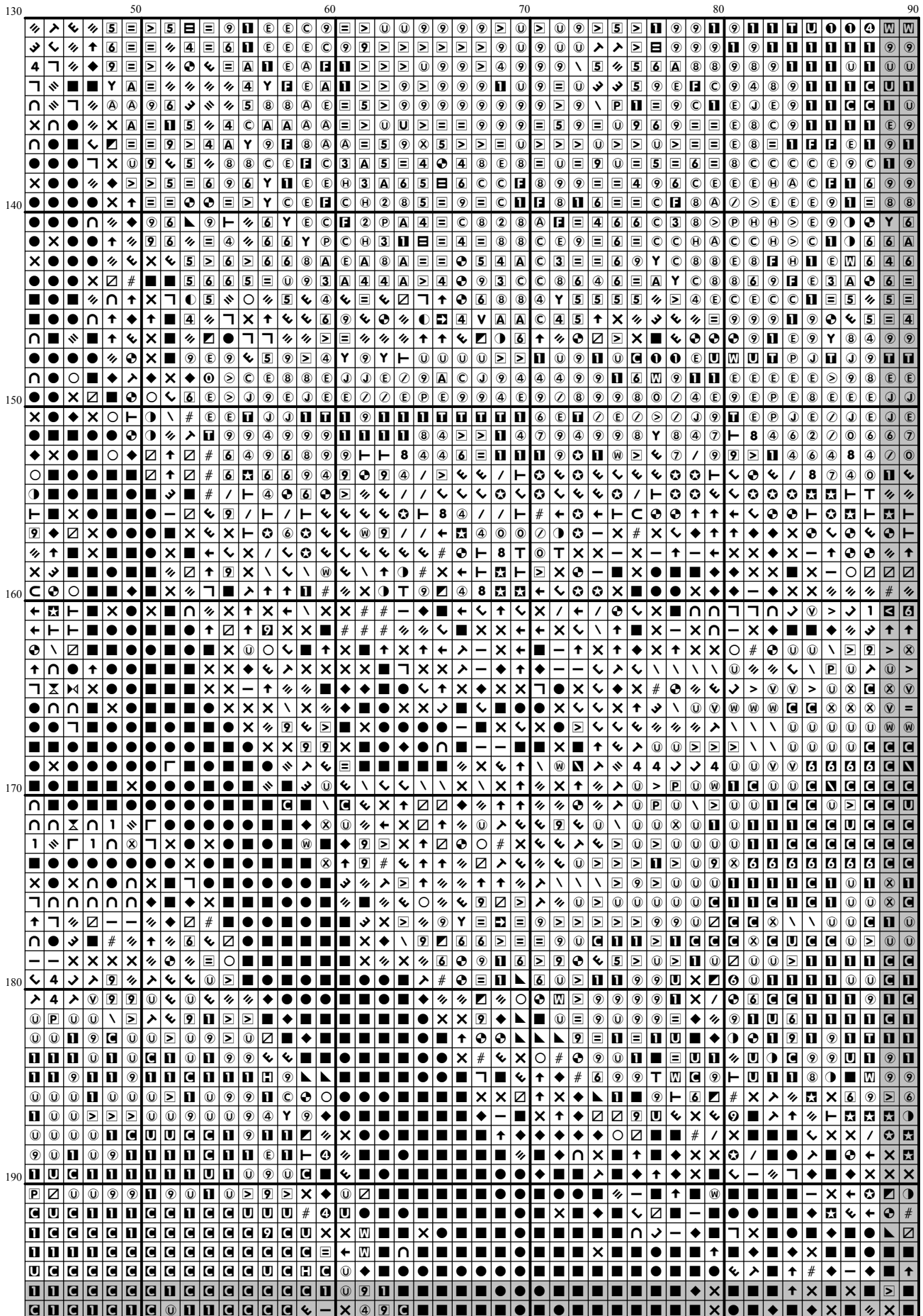
[illegible]





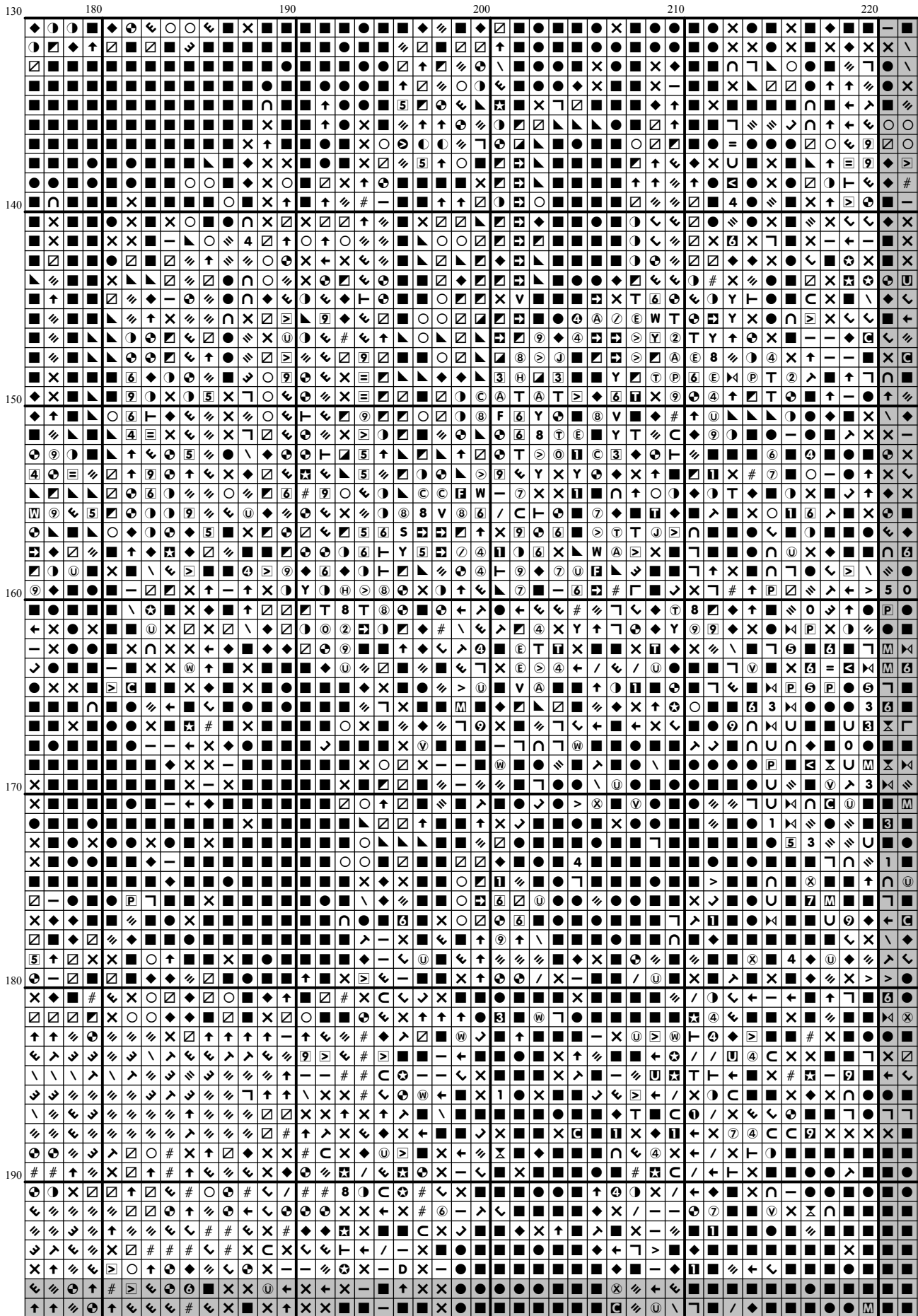


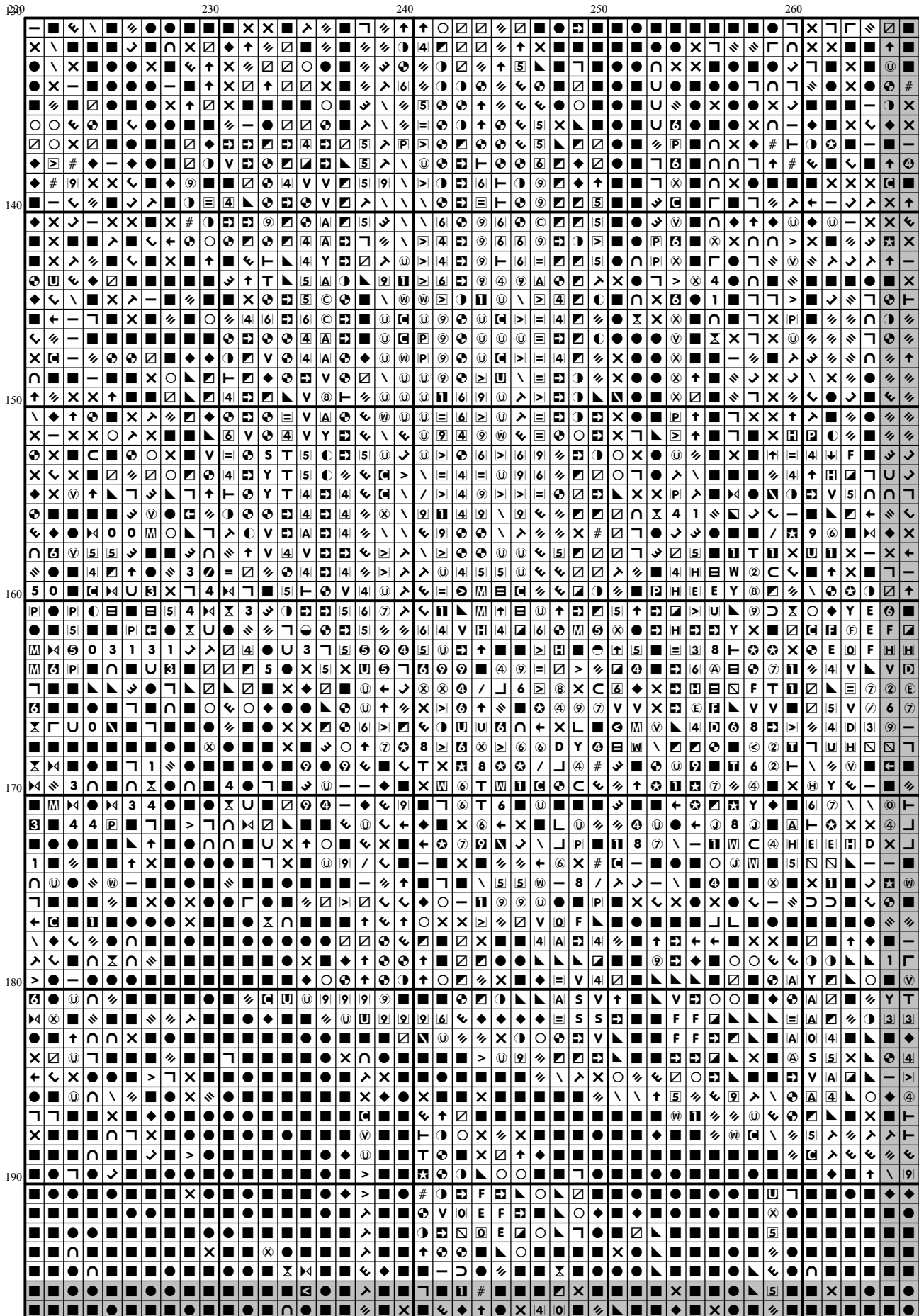


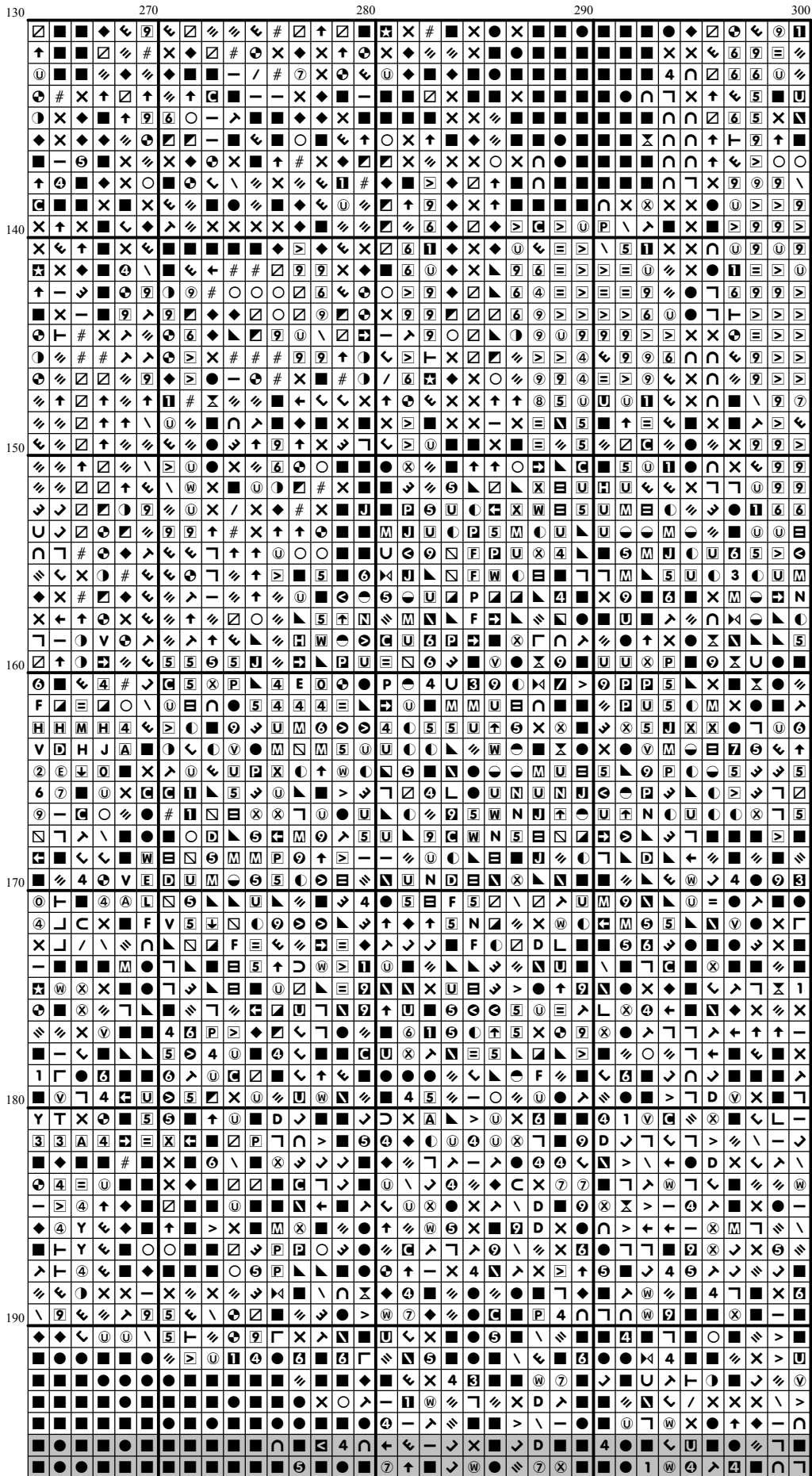


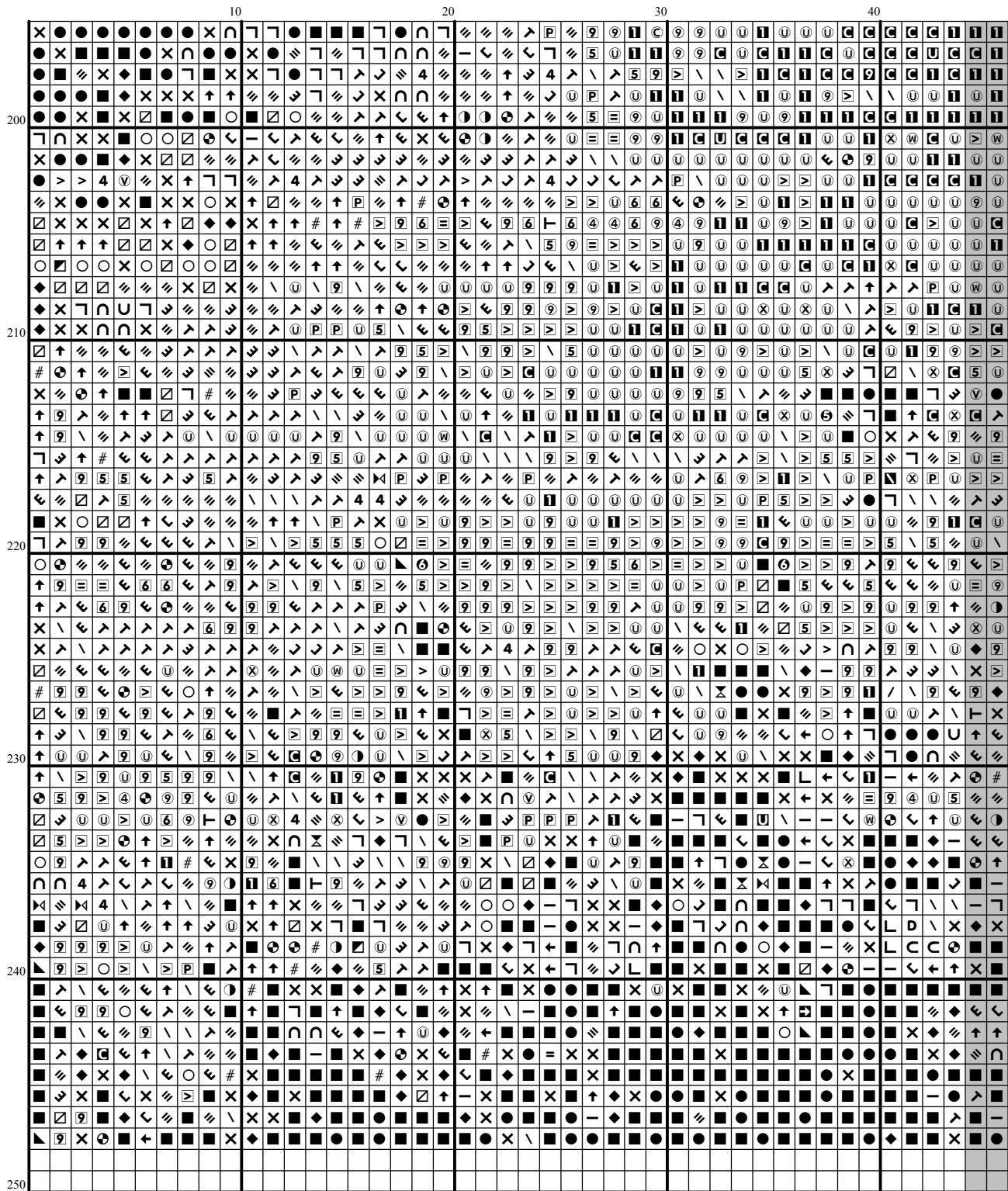
[illegible]

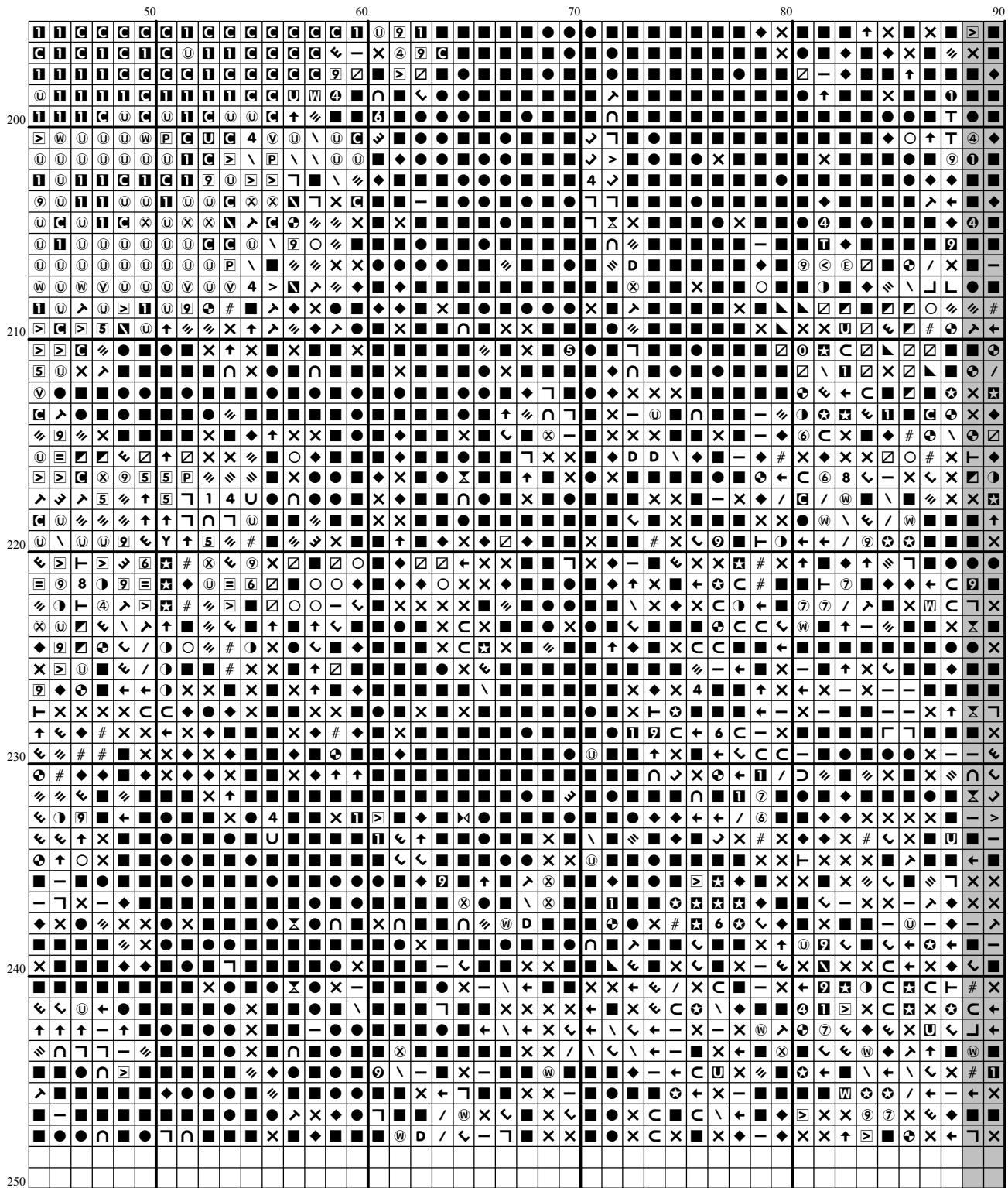
[illegible]

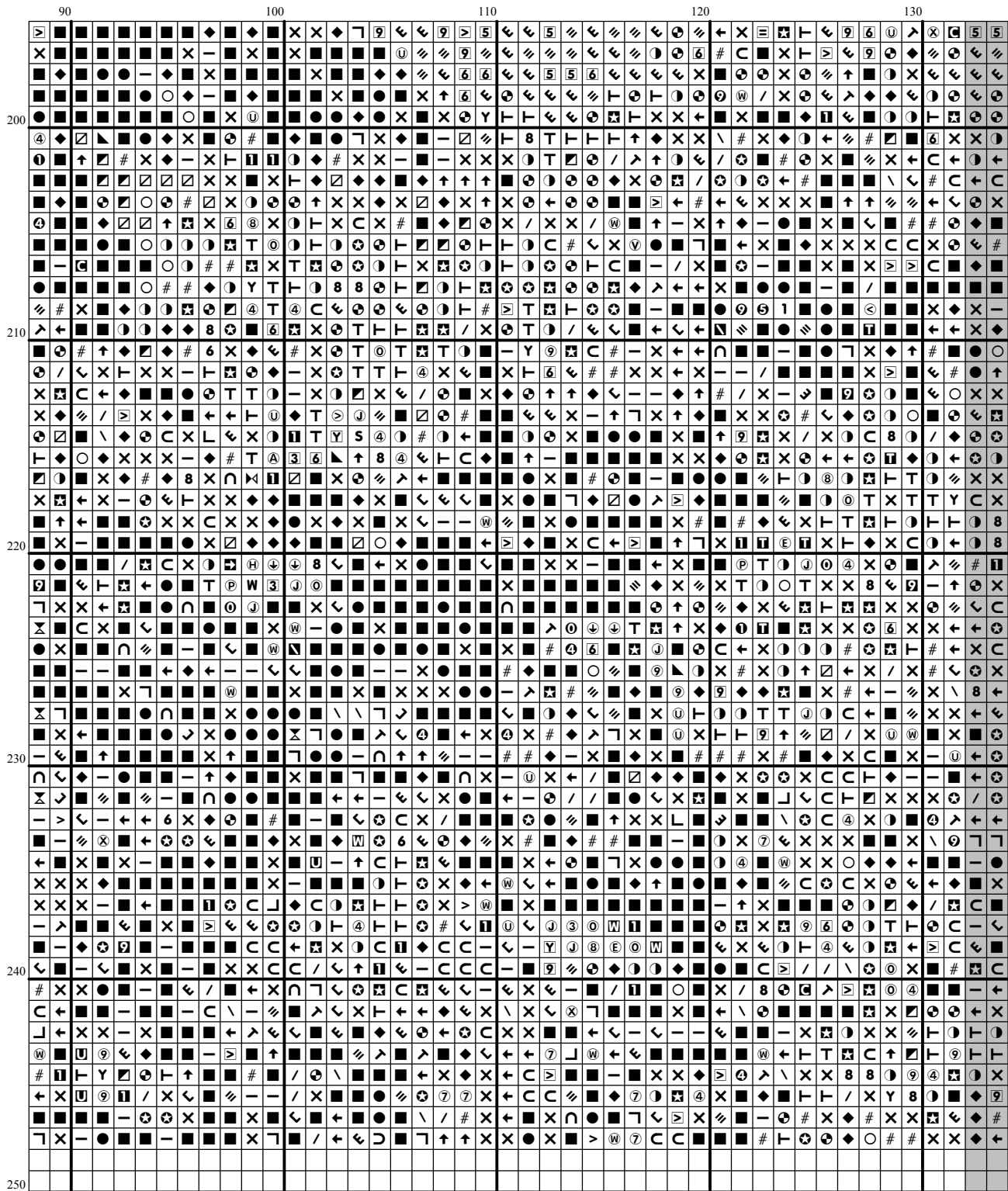


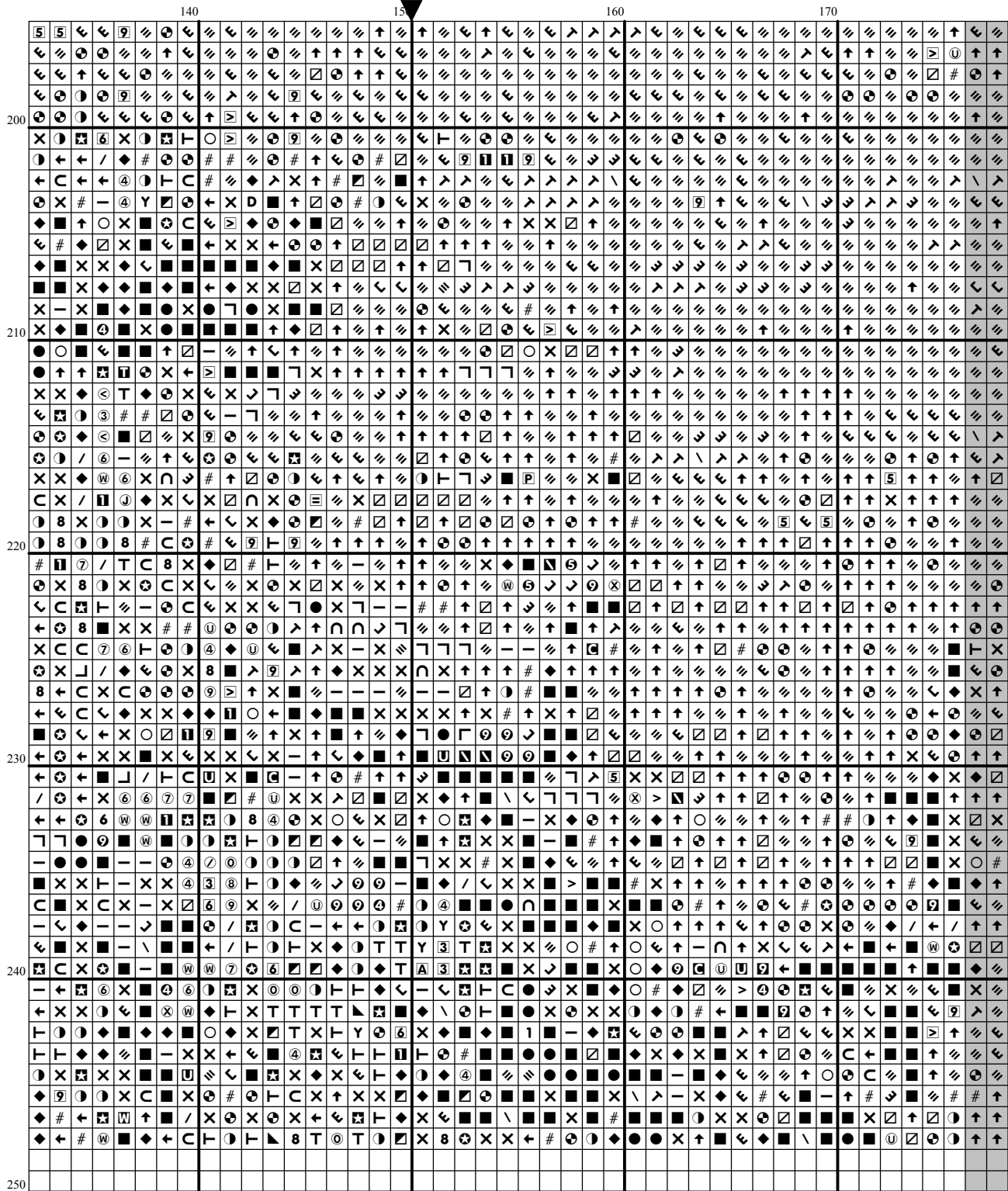


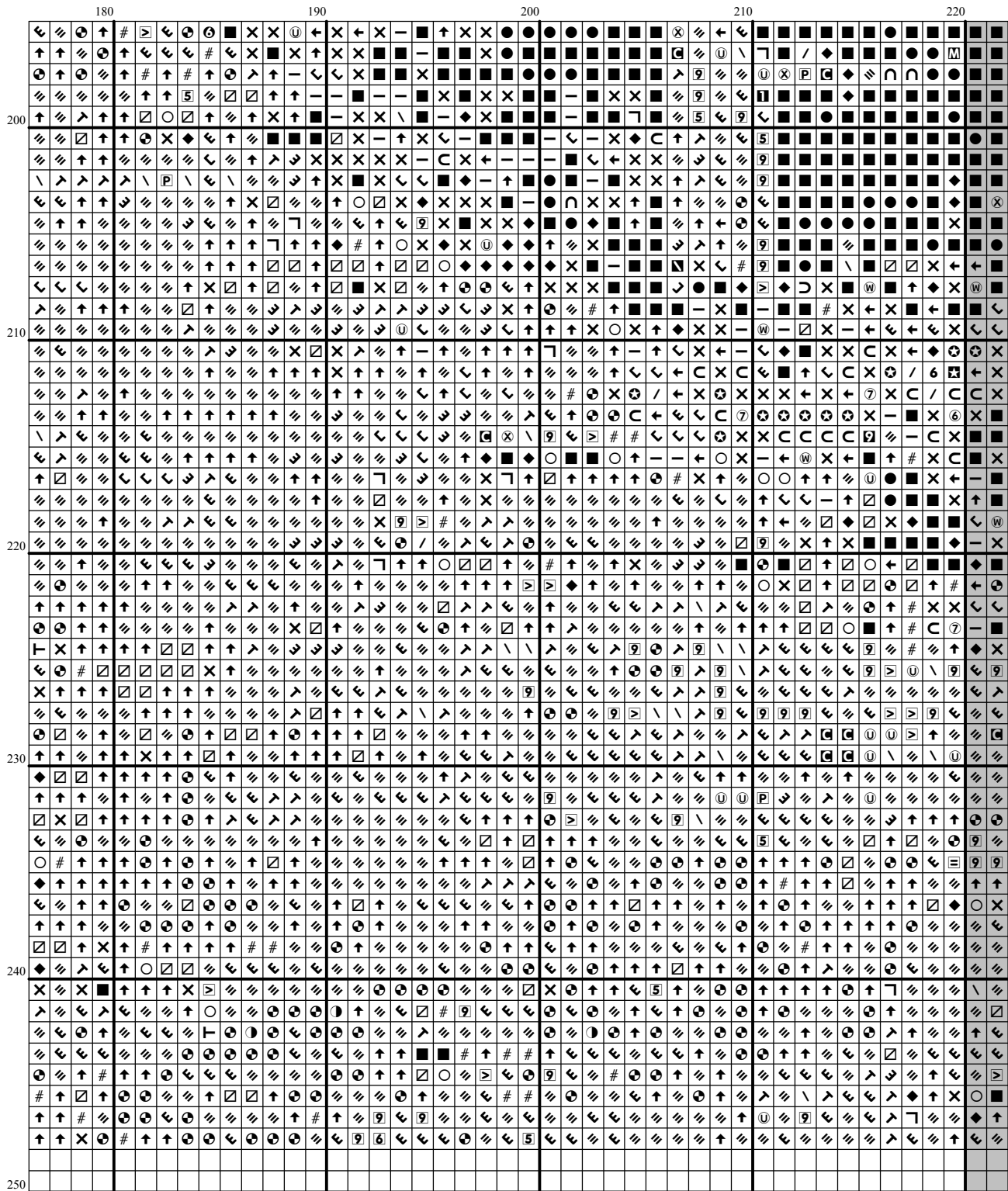


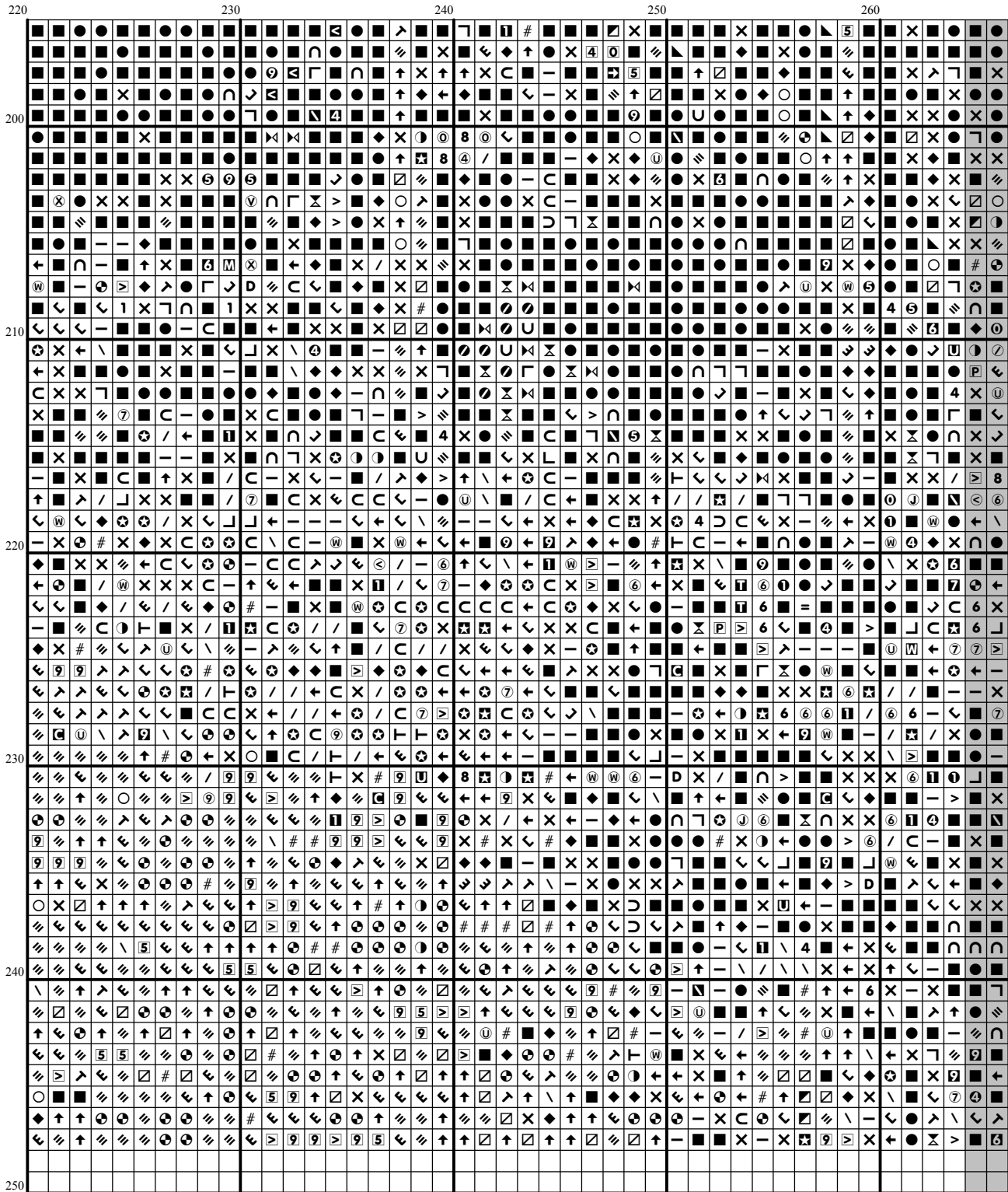


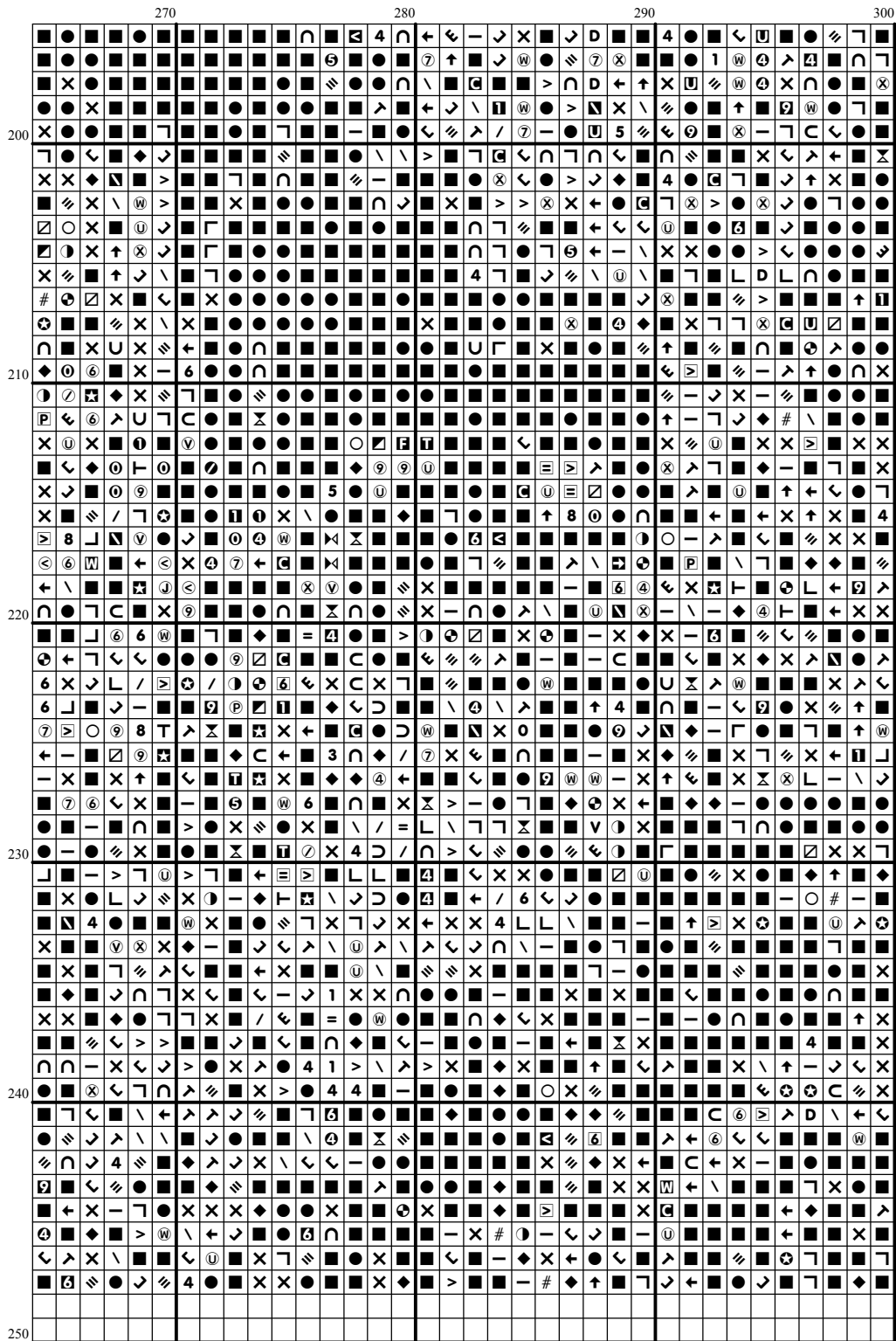












Instructions and Symbol Key for Design "BG 147 Log Cottage Normandy"

Fabric: 14 count white Aida

Stitches: 300 x 248

Size: 21.43 x 17.71 inches or 54.43 x 44.99 cm

Colours: DMC

Use **2** strands of thread for cross stitch

Sym	No.	Colour Name	Sym	No.	Colour Name
	152	Antique rose		153	Lilac rose
	154	Prune rose		158	Deep mauve
	159	Light blue grey		160	Storm blue
	161	Ash blue		165	Pale moss green
	166	Moss green		168	Mouse grey
	169	Pewter grey		211	Pale violet
	223	Medium dusty pink		225	Pale shell pink
	310	Black		315	Antique lilac
	317	Steel grey		318	Granite grey
	336	Indigo blue		341	Hydrangea blue
	347	Egyptian red		352	Salmon
	355	Brown red		356	Medium terracotta
	367	Bay leaf green		370	Medium mustard
	371	Green plains		372	Light mustard
	402	Pottery brown		413	Iron grey
	414	Lead grey		415	Chrome grey
	420	Hazelnut		422	Light oak
	433	Chocolate brown		437	Camel
	445	Light lemon		451	Shell pink grey
	453	Turtledove grey		469	Dark moss green
	471	Tarragon green		472	Bud green
	503	Thyme green		520	Dark fern green
	523	Ash green		524	Light grey green
	553	Amethyst violet		581	Grashopper green
	611	Sisal brown		612	String brown
	613	Rope brown		640	Green grey
	642	Earth grey		644	Light green grey
	645	Dark steel grey		647	Rock grey
	648	Pepper grey		676	Savannah gold
	677	Sand gold		680	Dark old gold
	704	Lime green		712	Cream
	727	Primrose yellow		730	Khaki green
	732	Bronze green		733	Golden green
	734	Light Olive green		760	Grenadine pink
	762	Pearl grey		778	Antique mauve
	780	Chestnut tree brown		793	Medium cornflower blue
	814	Deep wine red		815	Cherry red
	820	Marine blue		822	Cotton cream
	823	Blueberry blue		832	Light green bronze
	833	Brass		834	Light brass
	841	Deer brown		898	Teak brown
	900	Saffron orange		904	Avocado green
	906	Apple green		919	Red copper
	921	Burnt ochre orange		927	Oyster grey
	930	Slate grey		931	Blue grey
	932	Seagull blue		934	Algae green
	936	Oaktree moss green		937	Moss green
	938	Espresso brown		939	Dark navy blue

	945	Eggshell cream		986	Dark forest green
	3011	Artichoke green		3021	Cliff grey
	3023	Light platinum grey		3041	Medium lilac
	3042	Lilac		3046	Rye beige
	3047	Silver birch beige		3052	Silver green
	3072	Pale pearl grey		3078	Pale yellow
	3345	Dark Hunter Green		3346	Hunter Green
	3350	Dusty raspberry		3354	Hydrangea pink
	3363	Herb green		3371	Ebony
	3609	Light pink plum		3685	Dark mauve
	3687	Raspberry mauve		3689	Rose petal pink
	3712	Blush pink		3721	Earth pink
	3727	Litchee mauve		3746	Iris violet
	3747	Pale candy blue		3753	Moonlight blue
	3756	Cloud blue		3772	Rosy tan
	3776	Dark nutmeg brown		3778	Light terracotta
	3787	Wolf grey		3799	Anthracite grey
	3811	Waterfall blue		3815	Eucalyptus Green
	3819	Light moss green		3821	Straw yellow
	3823	Ivory		3828	Oaktree brown
	3833	Light strawberry		3834	Grape
	3835	Medium grape		3836	Light grape
	3861	Light taupe		3865	Winter white
	3866	Garlic cream		ECRUT	ECRUT

This chart has been designed and printed with our best intentions of being without mistakes. However, the possibility of human error, printing mistakes or the variation of individual stitching does exist, and we regret that we cannot be responsible for this.

Note: The shaded blocks on the chart represent overlapping stitches.
Copyright © Classic Cross Stitch 2005 All rights reserved.