

**General Instructions**

Cut fabric to allow 3 inches each side of design area. Use measurements listed at the top of the floss listings to determine the design size based on the stitch count of the fabric you will be using. (Kits include pre-cut fabrics, do NOT cut)

Zigzag or overcast the edges of the fabric to prevent fraying. For those who are unfamiliar with stitching multi page designs, we recommend that you make a working photocopy and layout the pages according to Chart Placement Diagram below. Extend arrow found at **center top** and **center left edge** of chart to join in center of chart. You begin stitching there.

NOTE: The arrows may be located on different pages, depending on the number of pages of the design you are stitching..

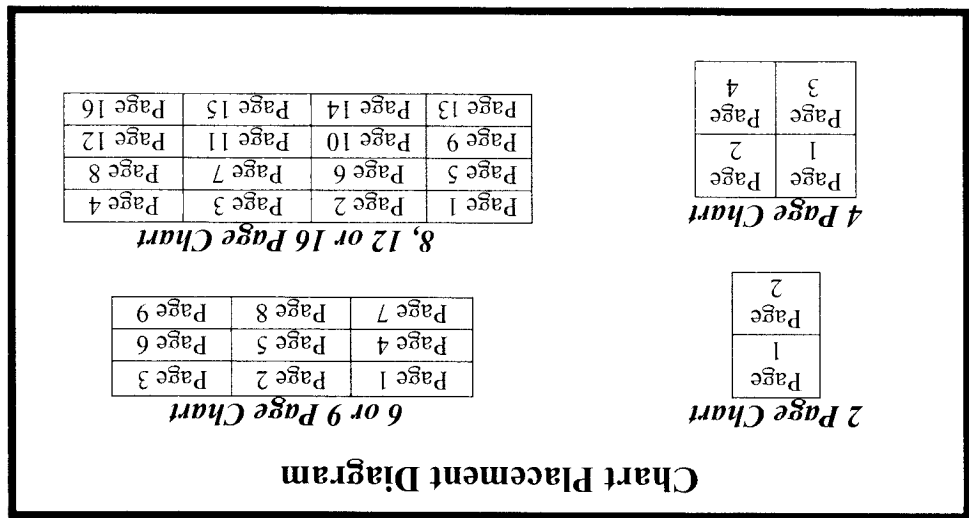
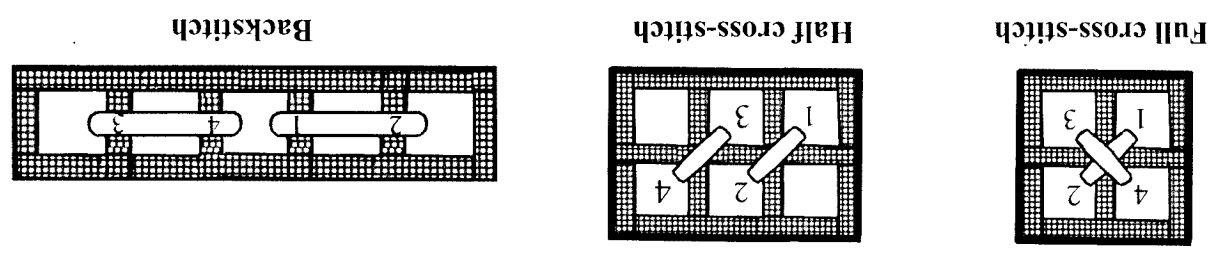
We recommend that you use two plies of floss to work the cross-stitches over one square of Aida cloth. Work backstitching with one ply of floss unless specified otherwise in floss legend.

**IMPORTANT**

Many of the Kustom Kratts multiple page charts **MAY** have a shaded grey section. This shaded grey area indicates a 3 row overlap from adjoining pages.

**DO NOT RE-STITCH THIS AREA**

**Basic Stitch Illustrations**



We make every effort to ensure that these instructions are accurate and complete. We cannot, however, be responsible for human error or variations in individual workmanship. Photos on the cover might vary slightly from the finished project.

# "Hiding Leopard" # 9843

**Designed By:** Dyan Allaire  
**Fabric:** Aida 14, Khaki  
 224w X 224h Stitches  
**Size(s):** 14 Count, 16w X 16h in  
 16 Count, 14w X 14h in  
 18 Count, 12-3/8w X 12-3/8h in

## Floss Used for Full Stitches:

Symbol	Strands	Type	Number	Color
☐	2	DMC	152	Shell Pink-MD LT
■	2	DMC	154	Grape-VY DK
◆	2	DMC	301	Mahogany-MD
■	2	DMC	310	Black
●	2	DMC	400	Mahogany-DK
⌘	2	DMC	436	Tan
□	2	DMC	606	Bright Orange-Red
♣	2	DMC	720	Orange Spice-DK
○	2	DMC	740	Tangerine
+	2	DMC	741	Tangerine-MD
-	2	DMC	742	Tangerine-LT
⊥	2	DMC	779	Cocoa-DK
☆	2	DMC	817	Coral Red-VY DK
	2	DMC	819	Baby Pink-LT
⬆	2	DMC	902	Garnet-VY DK
▦	2	DMC	919	Red Copper
⌘	2	DMC	922	Copper-LT
✓	2	DMC	945	Tawny
⊙	2	DMC	946	Burnt Orange-MD
▼	2	DMC	976	Golden Brown-MD
●	2	DMC	3041	Antique Violet-MD
☾	2	DMC	3064	Desert Sand
•	2	DMC	3772	Desert Sand-VY DK
△	2	DMC	3776	Mahogany-LT
⌘	2	DMC	3822	Straw-LT
⊙	2	DMC	3827	Golden Brown-Pale
●	2	DMC	3854	Autumn Gold-MD

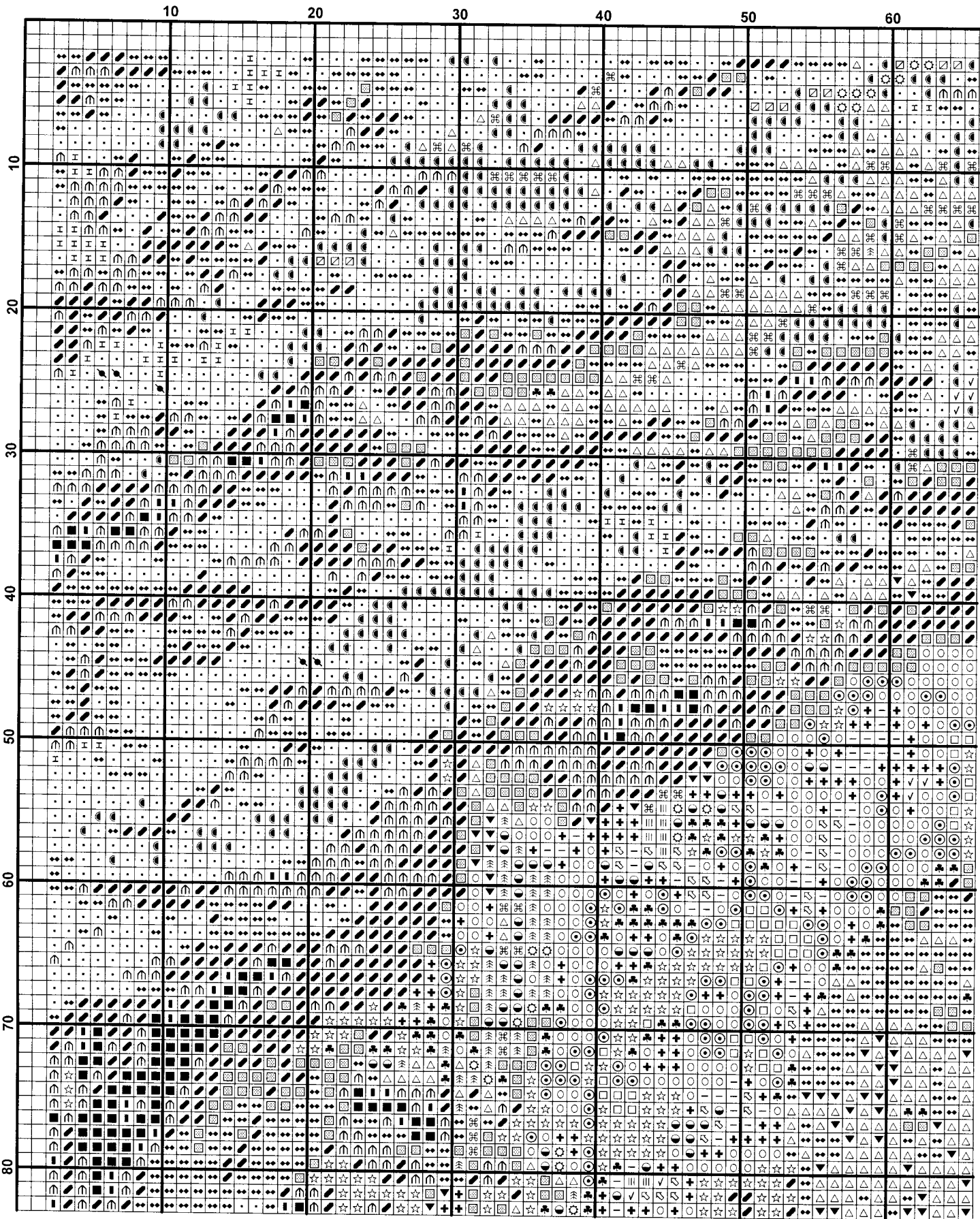
"Hiding Leopard" # 9843

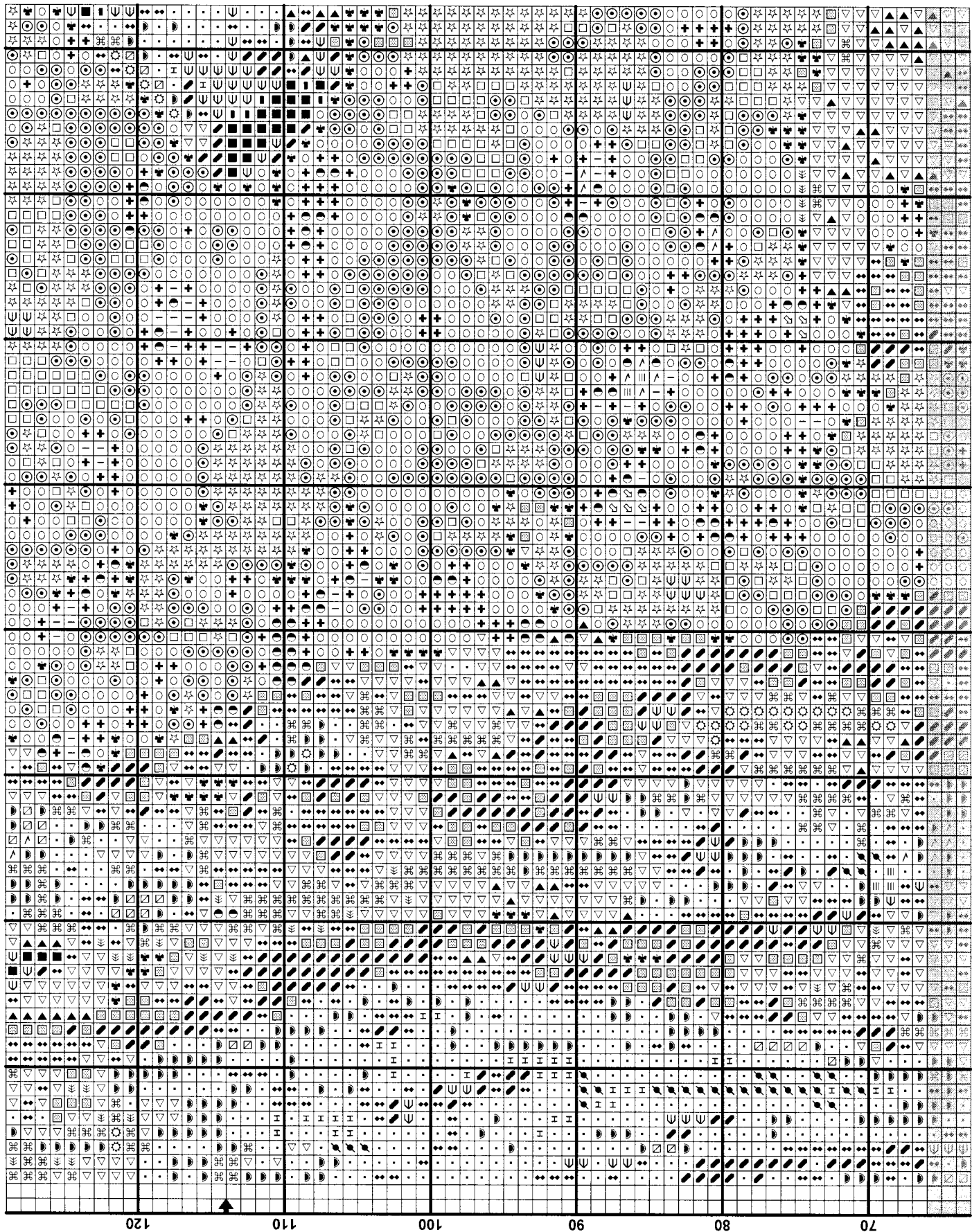
Usage Summary

Strands Per Skein: 6

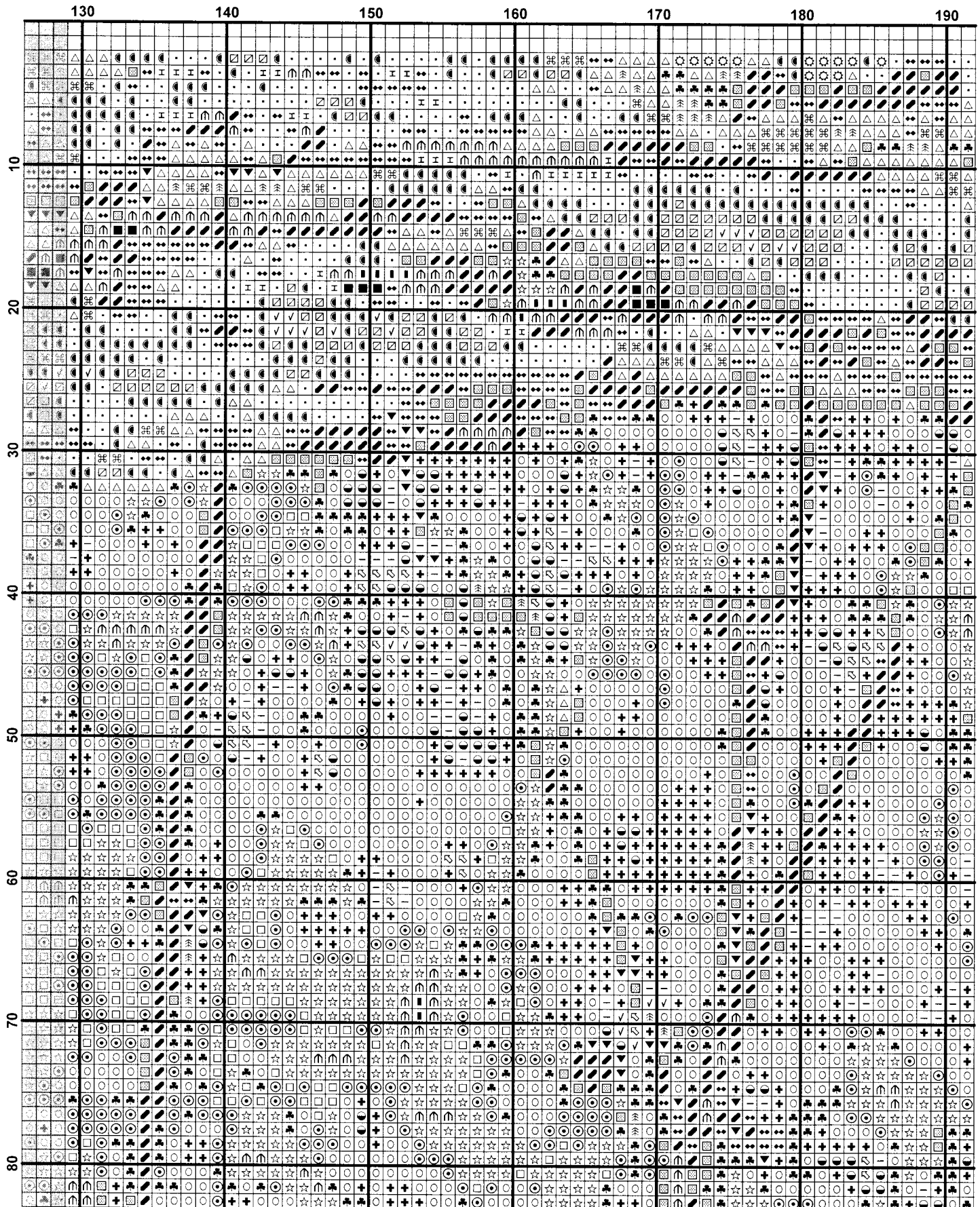
Skein Length: 313.0 in

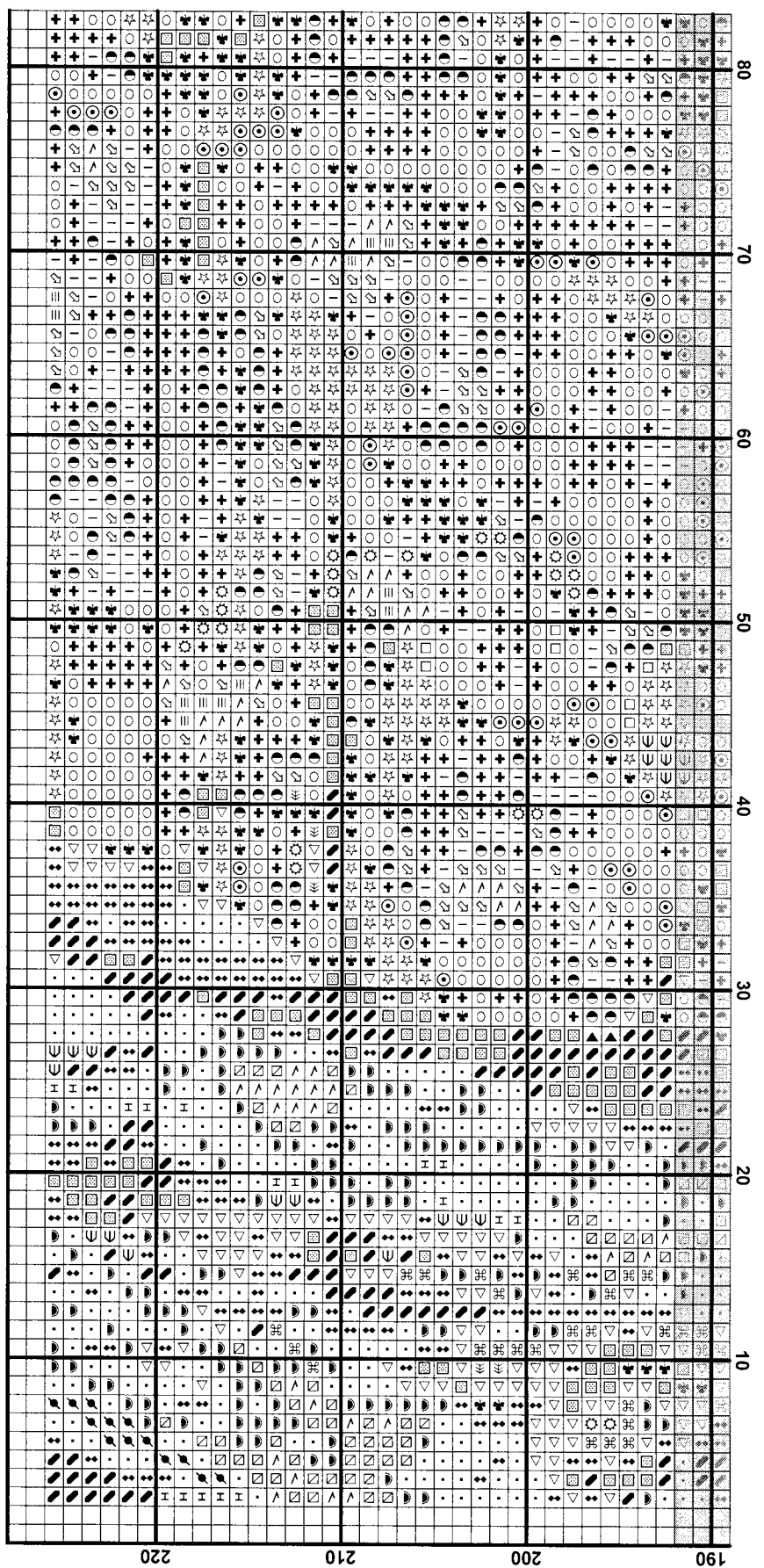
Type	Number	Full	Half	Quarter	Petite	Back(in)	Str(in)	Spec(in)	French	Bead	Skein Est.
DMC 152	1017	0	0	0	0	0.0	0.0	0.0	0	0	1.000
DMC 154	1040	0	0	0	0	0.0	0.0	0.0	0	0	1.000
DMC 301	4052	0	0	0	0	0.0	0.0	0.0	0	0	2.000
DMC 310	2516	0	0	0	0	0.0	0.0	0.0	0	0	2.000
DMC 400	4550	0	0	0	0	0.0	0.0	0.0	0	0	2.000
DMC 436	943	0	0	0	0	0.0	0.0	0.0	0	0	1.000
DMC 606	443	0	0	0	0	0.0	0.0	0.0	0	0	1.000
DMC 720	1893	0	0	0	0	0.0	0.0	0.0	0	0	1.000
DMC 740	3314	0	0	0	0	0.0	0.0	0.0	0	0	2.000
DMC 741	2008	0	0	0	0	0.0	0.0	0.0	0	0	1.000
DMC 742	431	0	0	0	0	0.0	0.0	0.0	0	0	1.000
DMC 779	1526	0	0	0	0	0.0	0.0	0.0	0	0	1.000
DMC 817	2614	0	0	0	0	0.0	0.0	0.0	0	0	2.000
DMC 819	881	0	0	0	0	0.0	0.0	0.0	0	0	1.000
DMC 902	3315	0	0	0	0	0.0	0.0	0.0	0	0	2.000
DMC 919	2473	0	0	0	0	0.0	0.0	0.0	0	0	2.000
DMC 922	785	0	0	0	0	0.0	0.0	0.0	0	0	1.000
DMC 945	1416	0	0	0	0	0.0	0.0	0.0	0	0	1.000
DMC 946	1518	0	0	0	0	0.0	0.0	0.0	0	0	1.000
DMC 976	877	0	0	0	0	0.0	0.0	0.0	0	0	1.000
DMC 3041	869	0	0	0	0	0.0	0.0	0.0	0	0	1.000
DMC 3064	1387	0	0	0	0	0.0	0.0	0.0	0	0	1.000
DMC 3772	4582	0	0	0	0	0.0	0.0	0.0	0	0	2.000
DMC 3776	2637	0	0	0	0	0.0	0.0	0.0	0	0	2.000
DMC 3822	680	0	0	0	0	0.0	0.0	0.0	0	0	1.000
DMC 3827	982	0	0	0	0	0.0	0.0	0.0	0	0	1.000
DMC 3854	1427	0	0	0	0	0.0	0.0	0.0	0	0	1.000



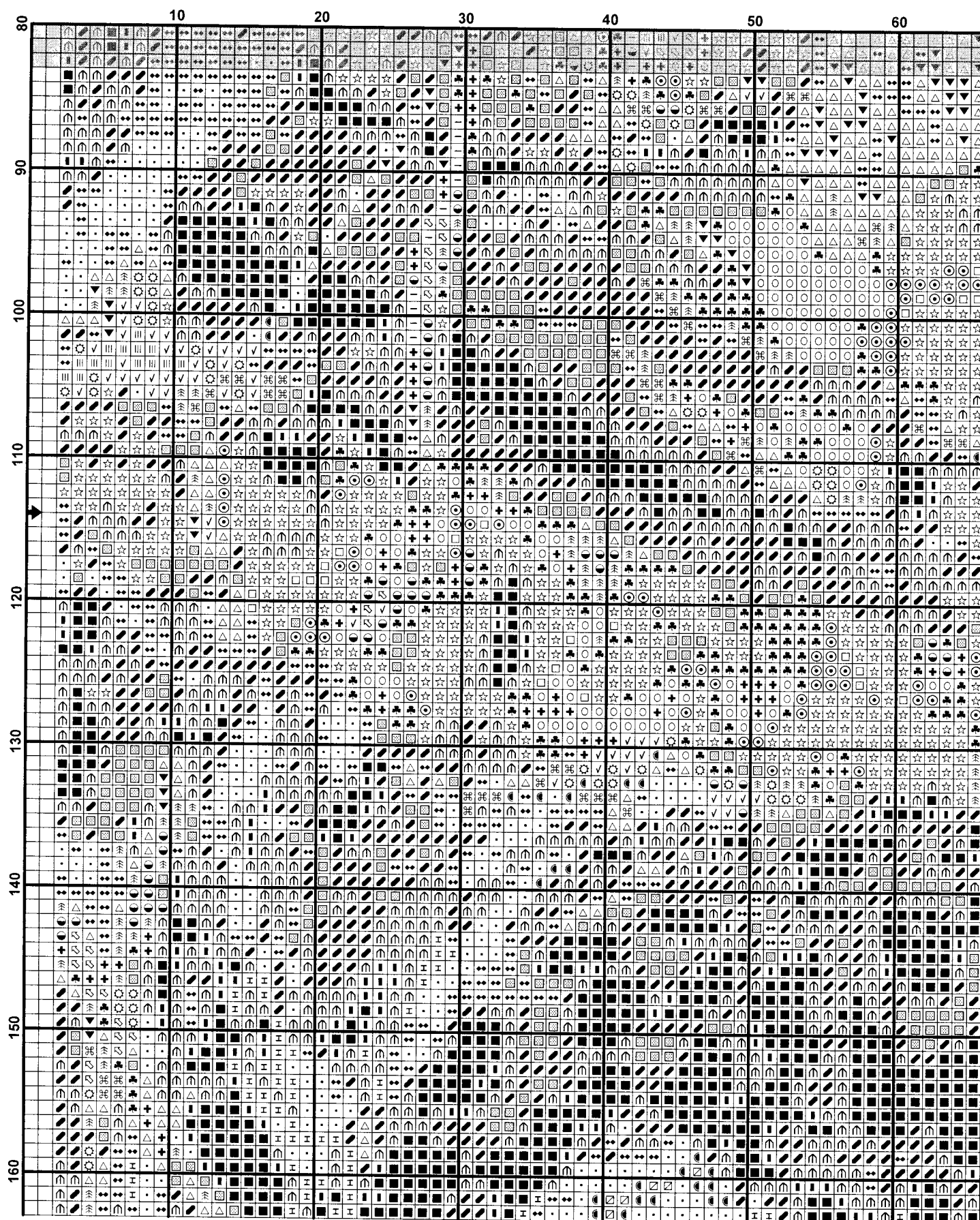


"Hiding Leopard" # 9843

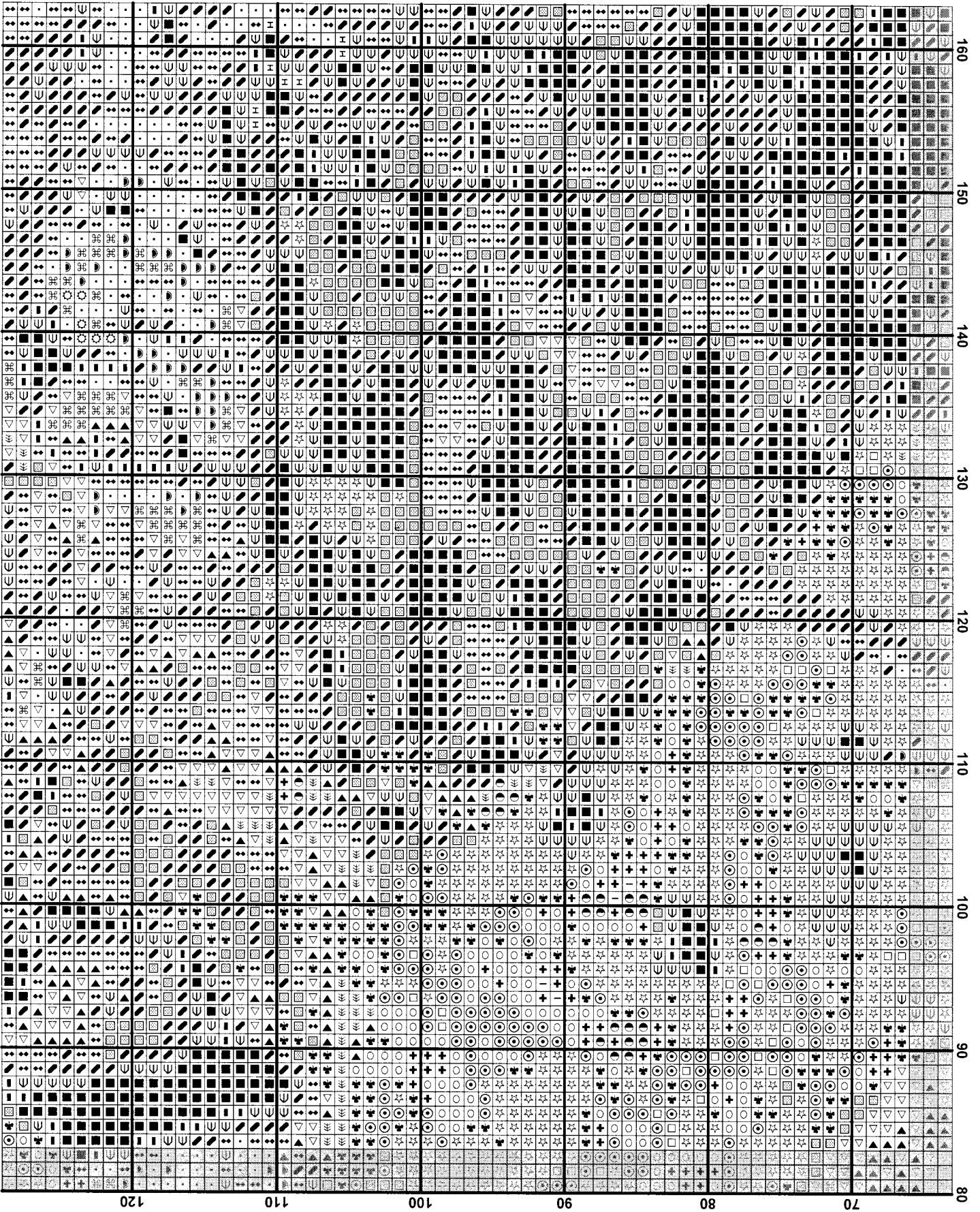




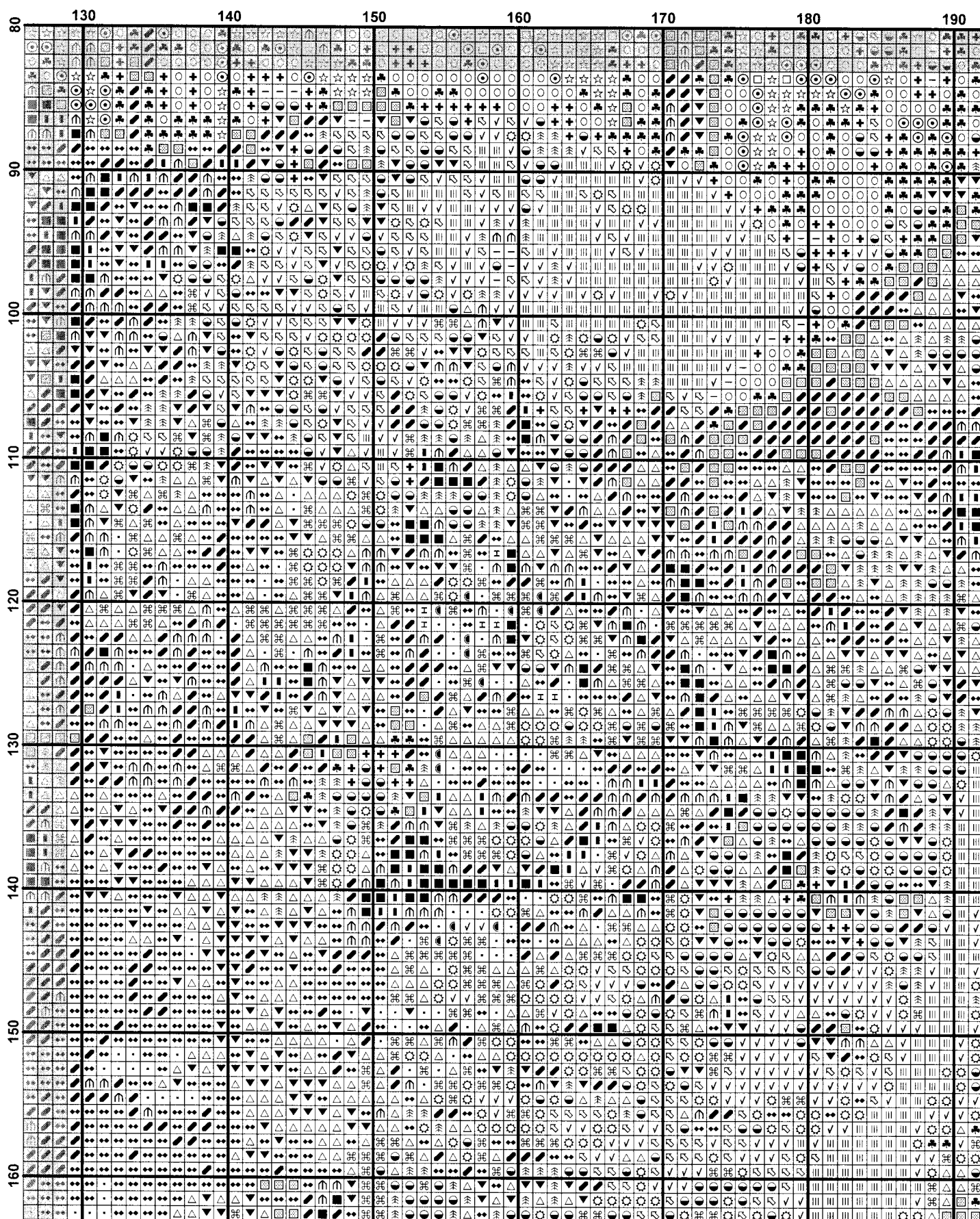


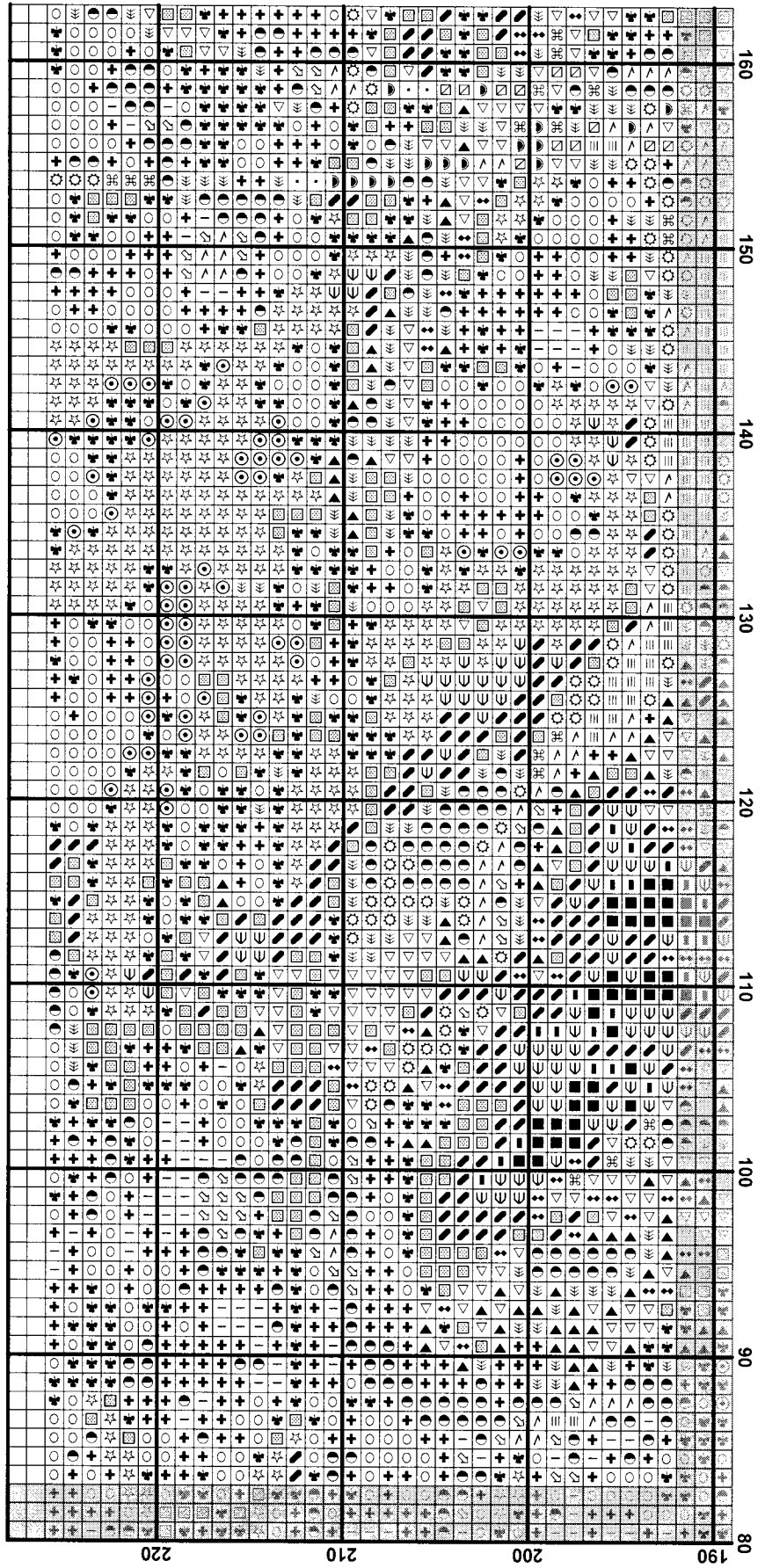


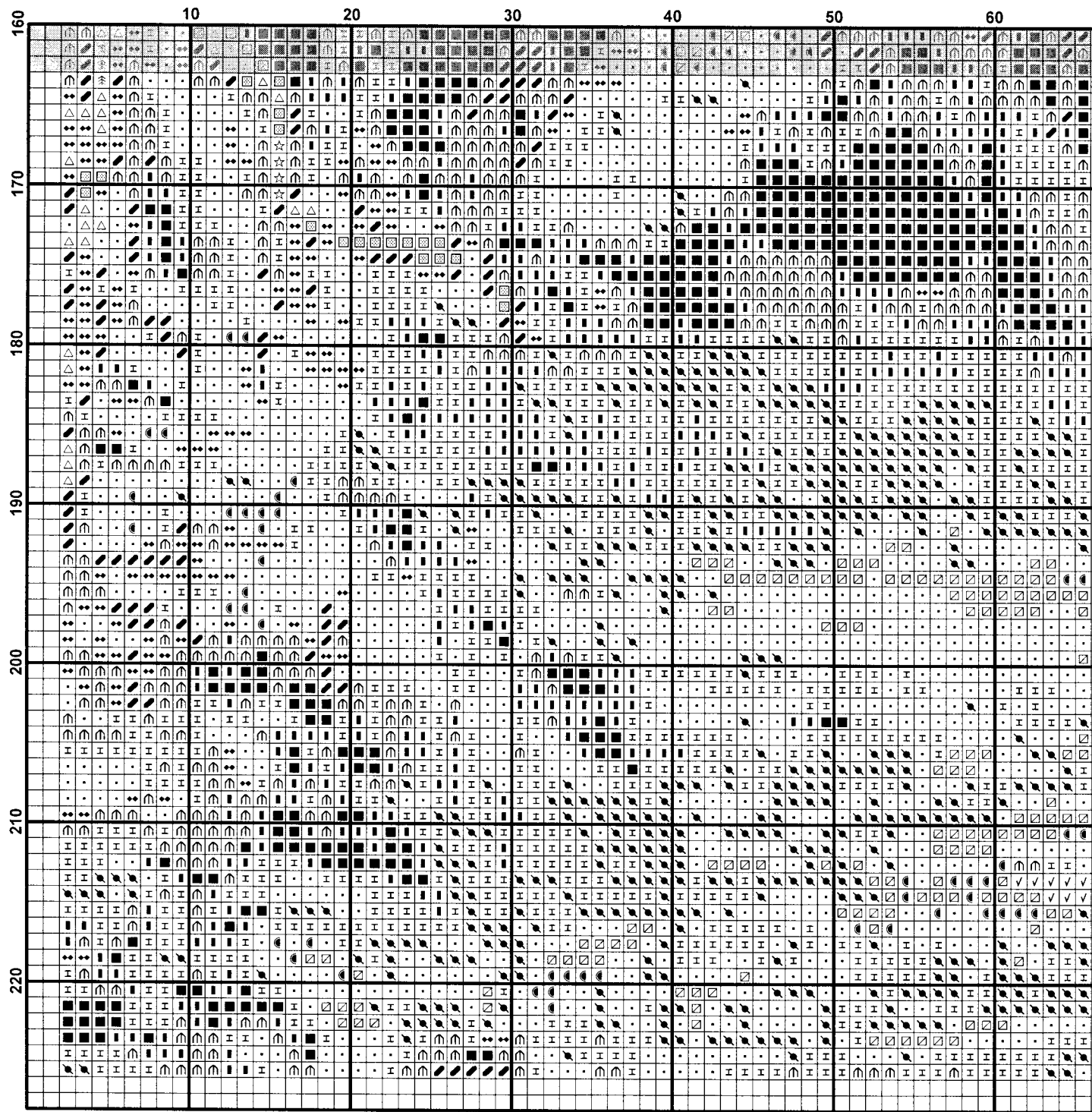


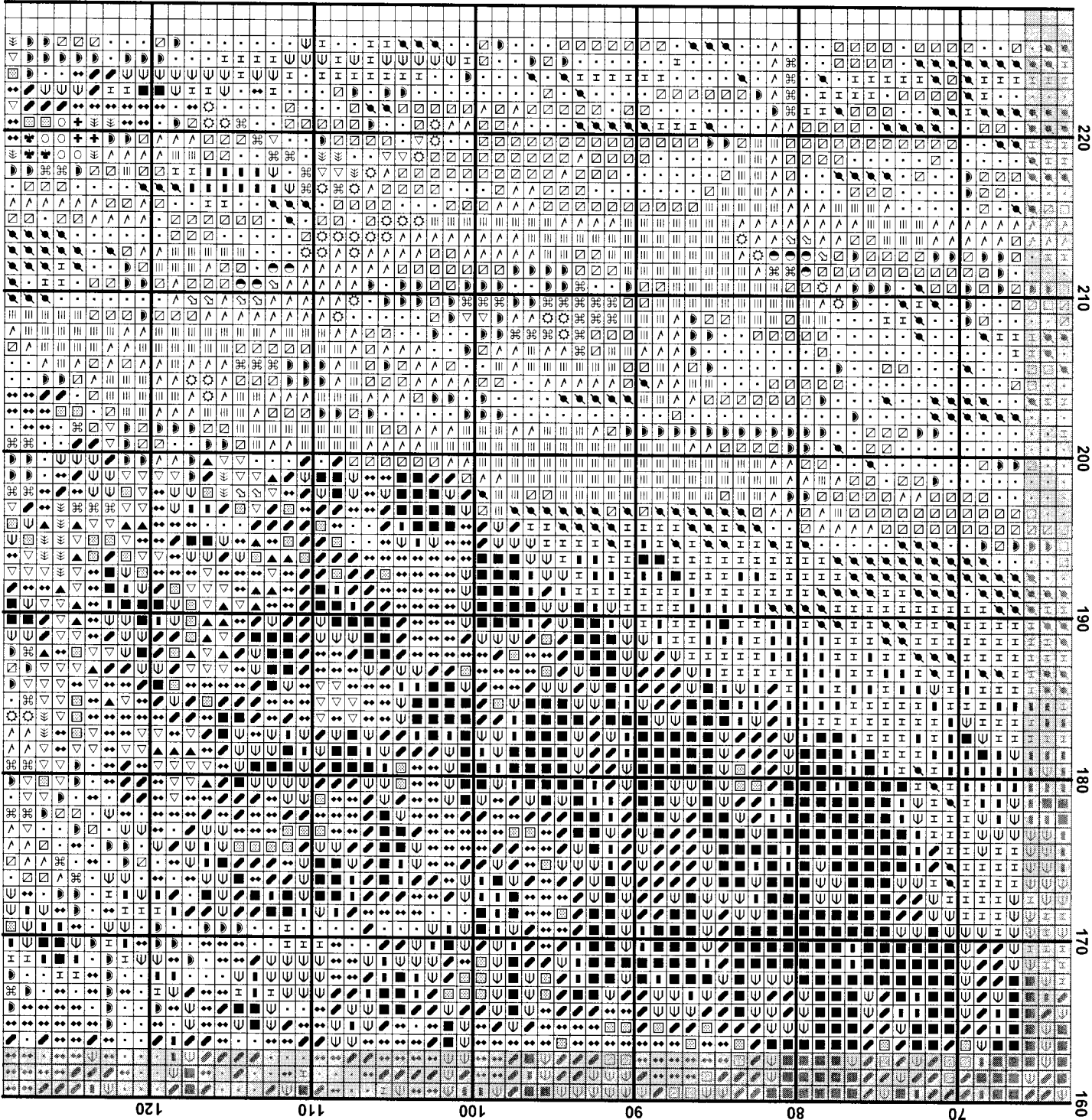


"Hiding Leopard" # 9843









"Hiding Leopard" # 9843



