

# Tams Creations<sup>+</sup>

## Blackwork Challenge 1

<http://www.tamscreations.com>



Stitches : 130 x 130

Size : 23.6 cm x 23.6 cm

Usage : 22m (3 skeins) per strand

Instructions : start in the center, complete sections 3 & 4, then the outer sections.

Note : 2 square overlap indicated in light grey.

Key : — Backstitch

✕ Cross Stitch

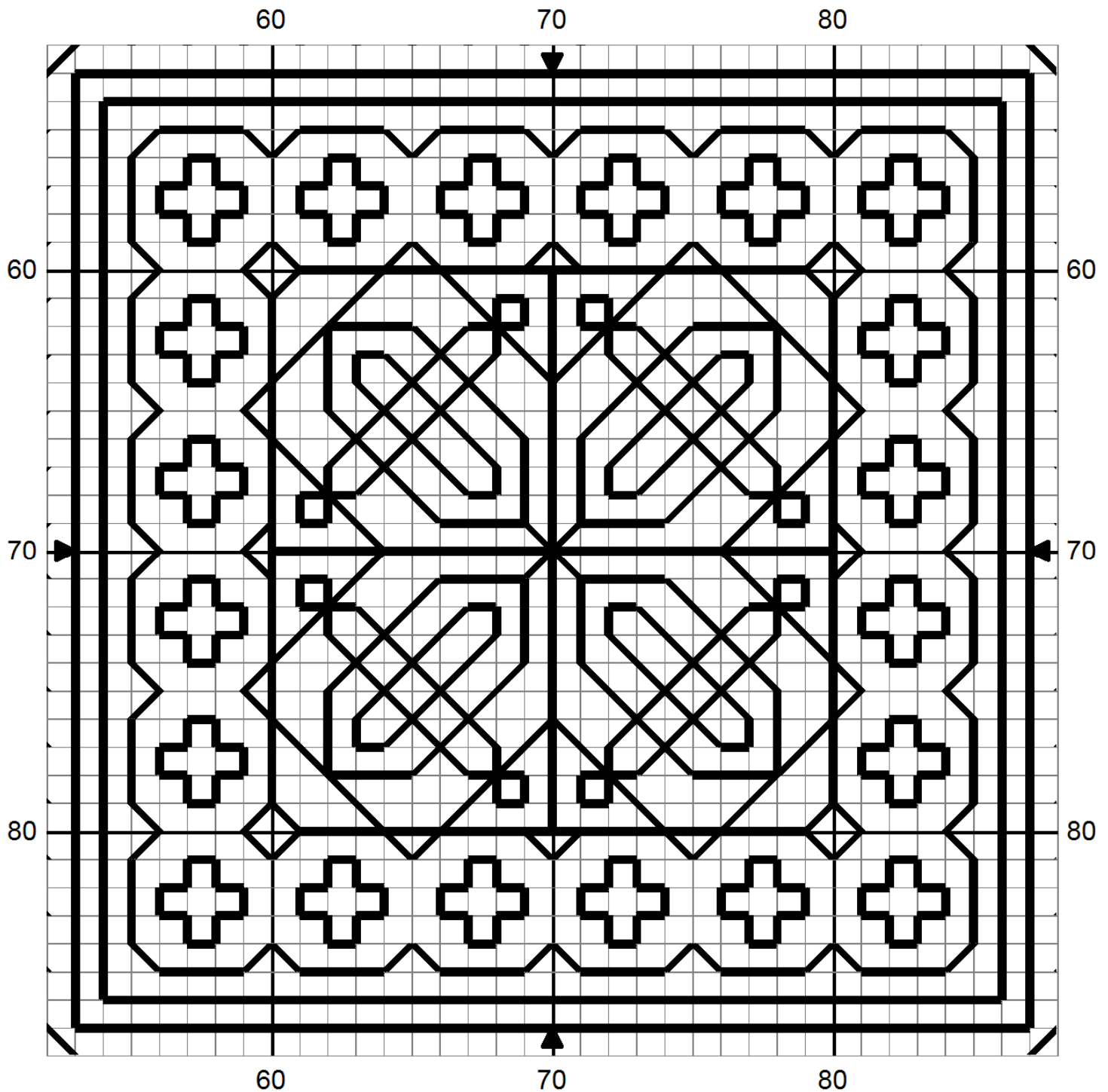
► Center markers

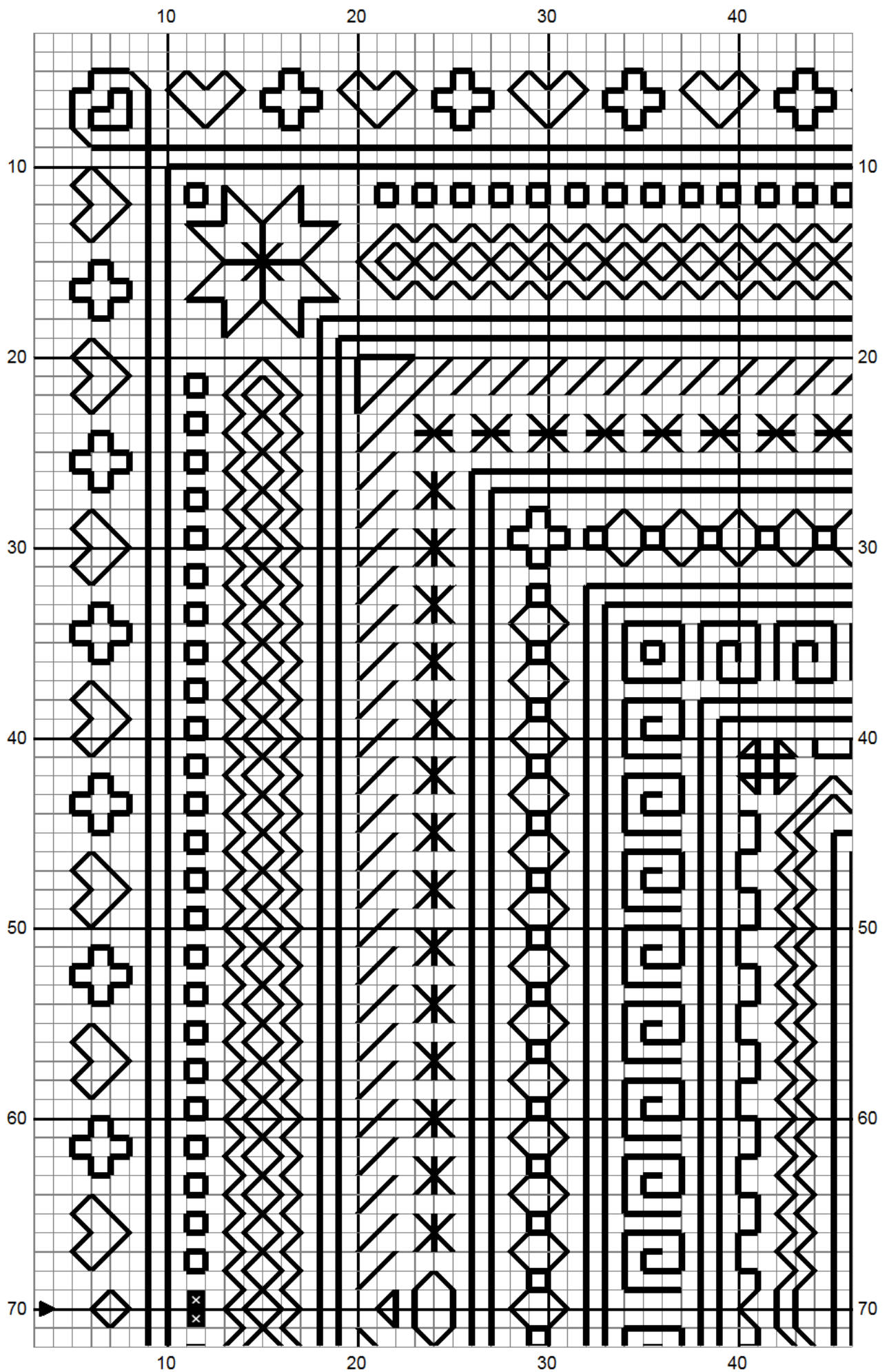
# Tams Creations<sup>+</sup>

## Blackwork Challenge 1

<http://www.tamscreations.com>

Center zoom : this page is in addition to the main chart to help get you started.

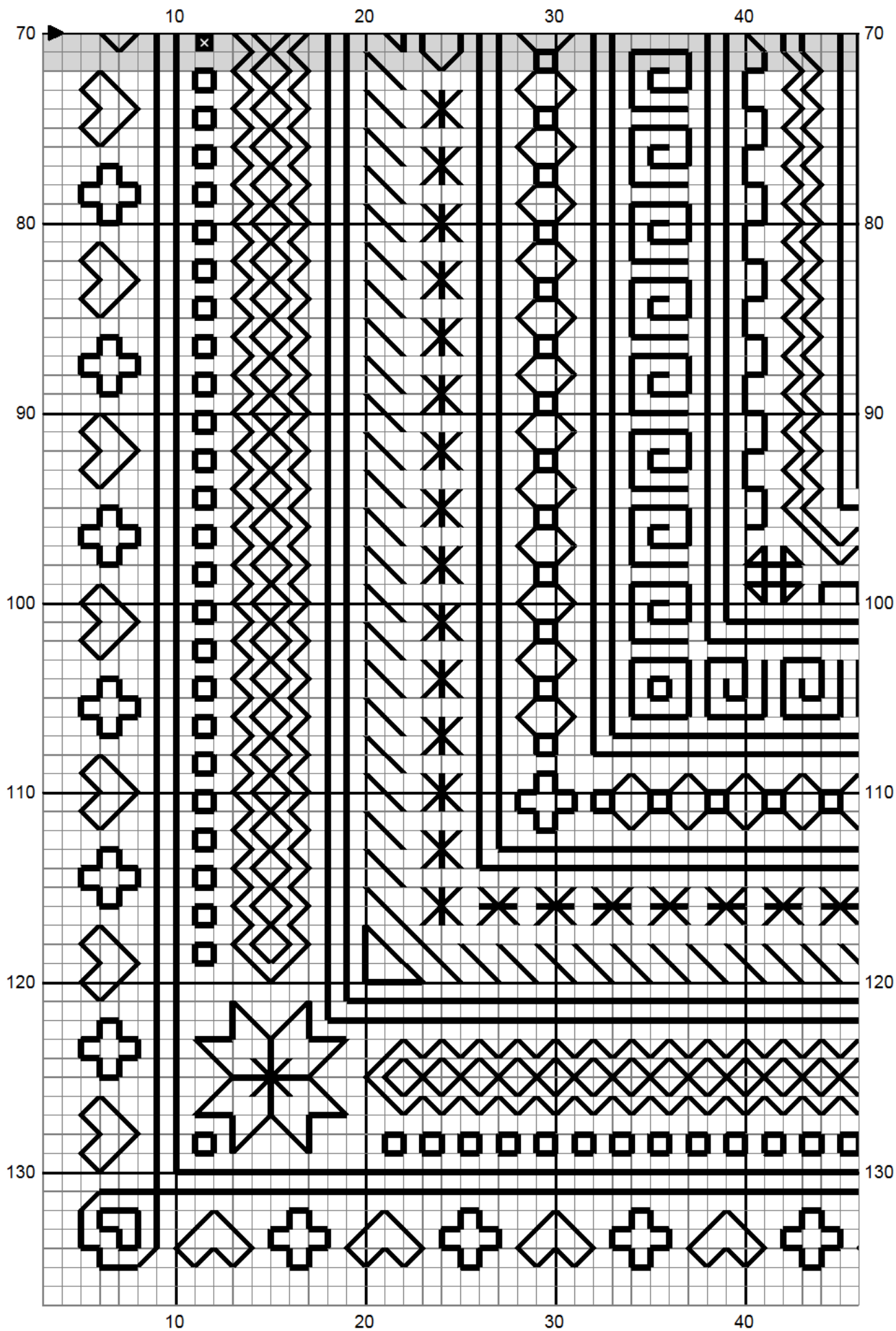




1

**Tams Creations**  *Blackwork Challenge 1*





2

Tams Creations  Blackwork Challenge 1

50

60

70

80

90

10

10

20

20

30

30

40

40

50

50

60

60

70

70

50

60

70

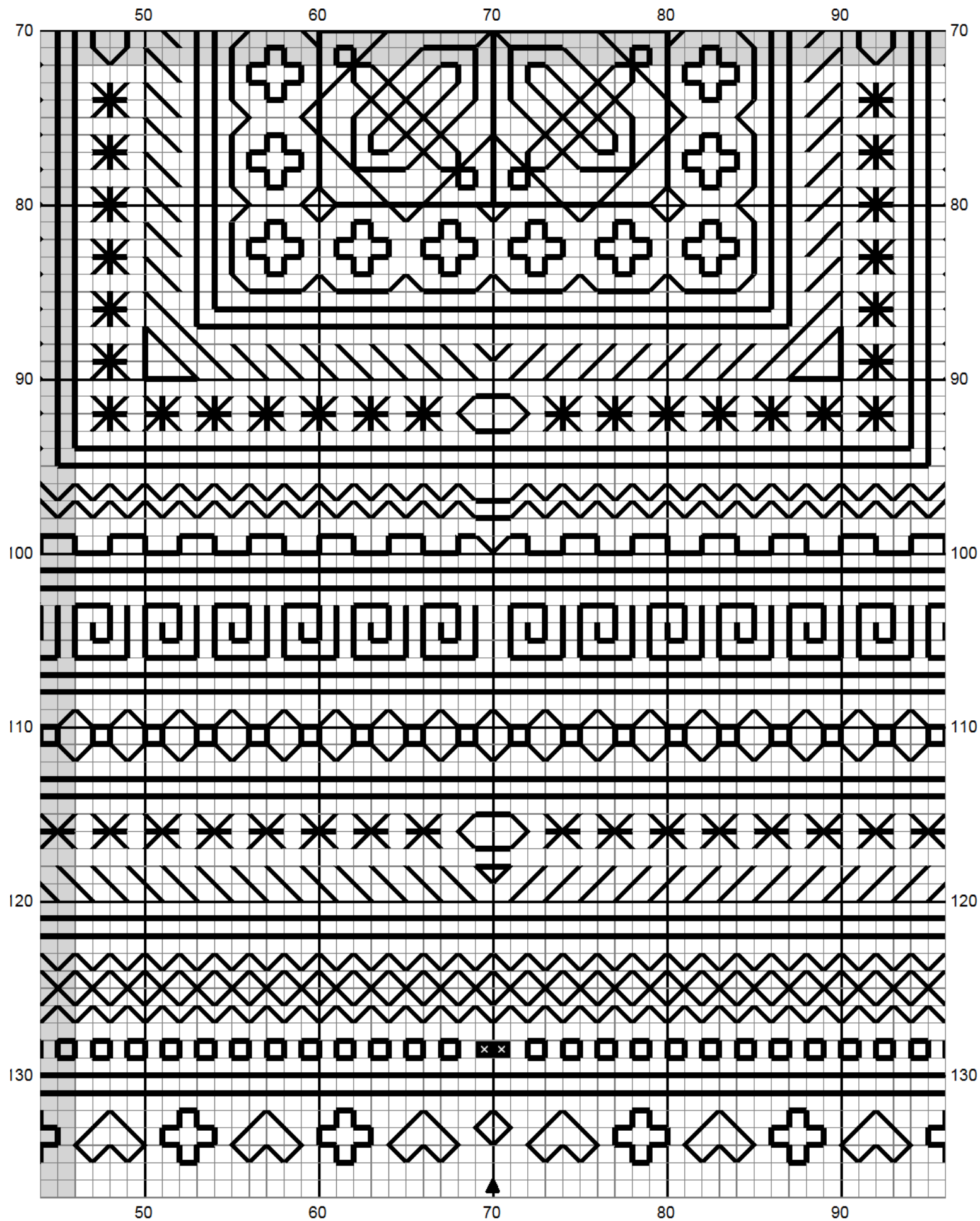
80

90



3

Tams Creations  Blackwork Challenge 1



4

**Tams Creations**  *Blackwork Challenge 1*

100

110

120

130

10

10

20

20

30

30

40

40

50

50

60

60

70

70

100

110

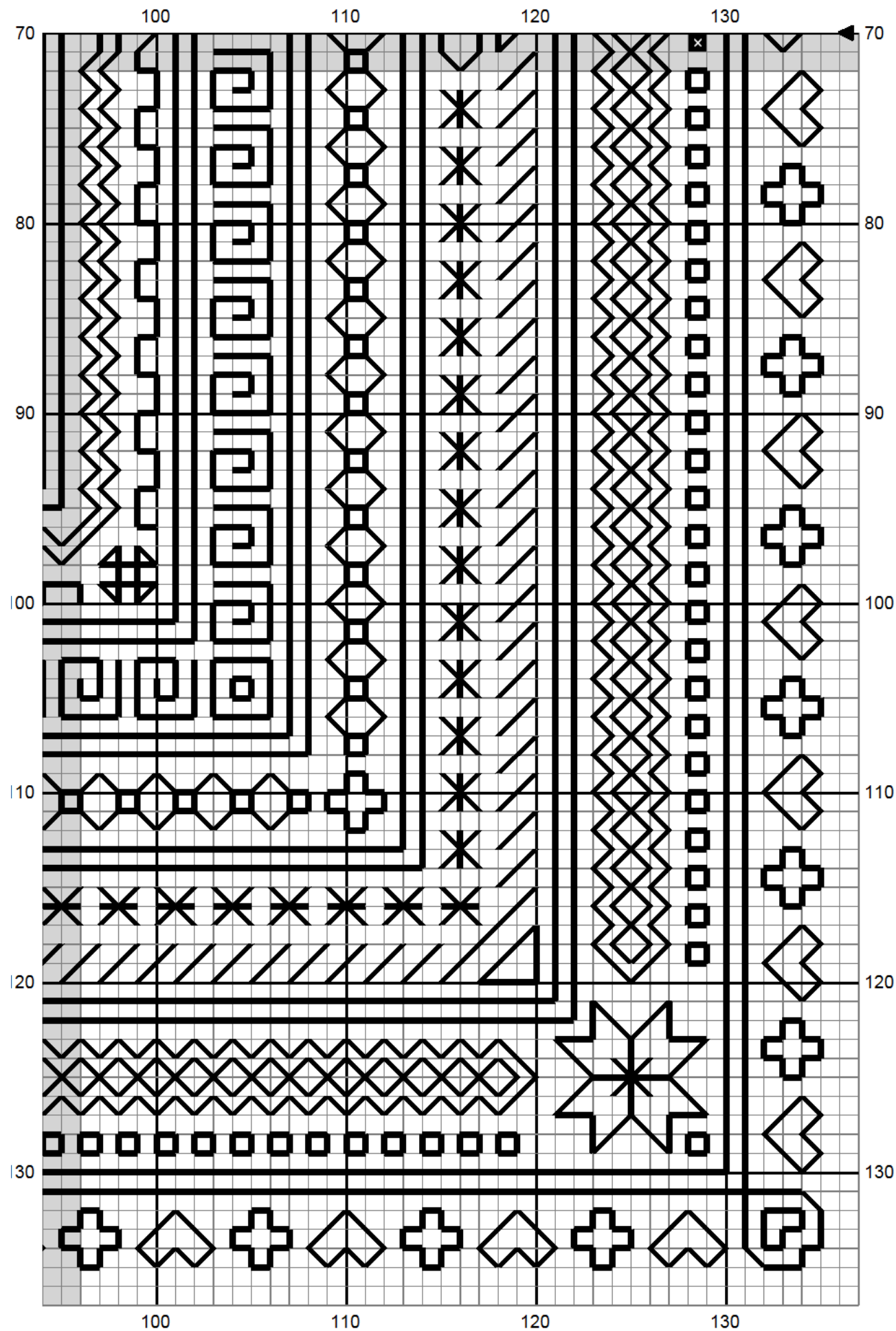
120

130



5

Tams Creations  Blackwork Challenge 1



6

Tams Creations  Blackwork Challenge 1