

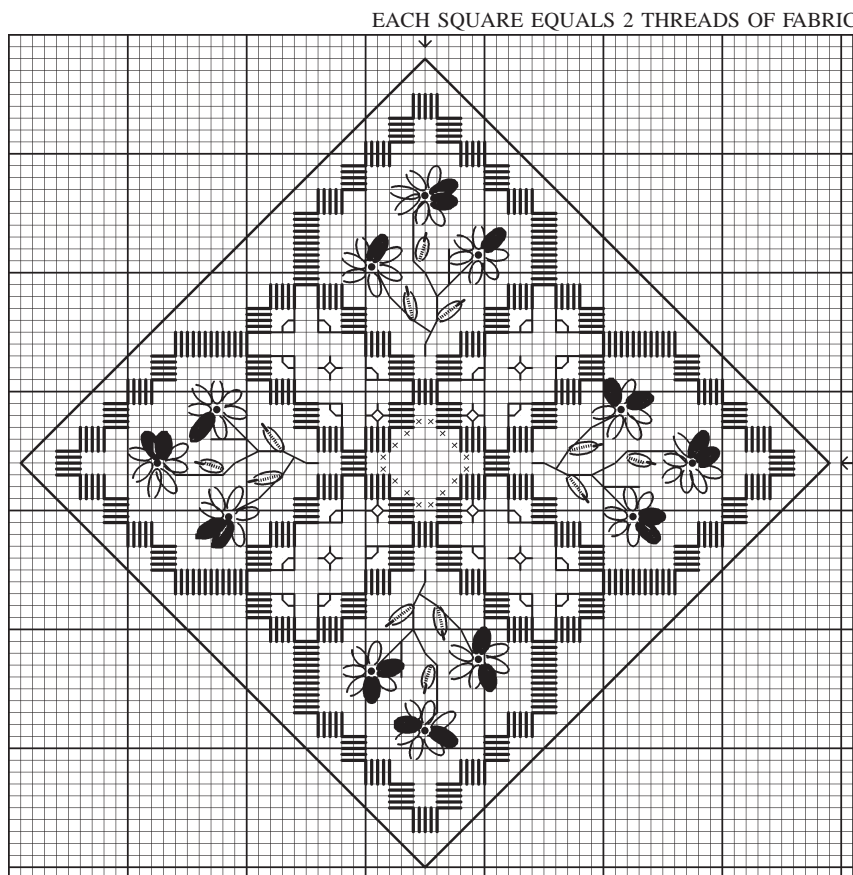
Summer Biscornu!

Designed by Thea Dueck of the Victoria Sampler

This is the original Summer Biscornu Free Pattern for our creative stitchers! A stitcher in our VS Yahoo Group won first prize in our FREE PATTERN STITCH CONTEST July 2009! To encourage your own creativity, just stitch this design using your own colours of silk ribbon, flosses, overdyed perle, linen etc. You can also add your choice of beads or other embellishments to the finished version if you wish. Even though the contest is now over, you can still have fun stitching this little Biscornu.. and you can still add your picture to the Contest Photo Album. The winning entry received \$50 of VS gifts. Also, a picture of the winning Biscornu as well as the 'runner up'... including their lists of materials are now published on our website in the Free Pattern section for everyone to see! Stitch your own version, finish it, and upload a clear large photo in the Victoria Sampler FREE PATTERN Photo Album in the Main Victoria Sampler Yahoo group for fun! Remember the Contest has ended on June 30th, 2009, but you can now add your own photo to the album just for the fun of it. We'll keep the album up for a few more months this Summer.. so stitch this beautiful Summer Tuffet today!!

Design area: 68h x 68w (4.85" x 4.85")

Model: 28-32 ct Linen Mint Green or your choice of colour!
(cut 8" X 8" for ornament)



MAIN CHART

COPYRIGHT © THEA DUECK 2009

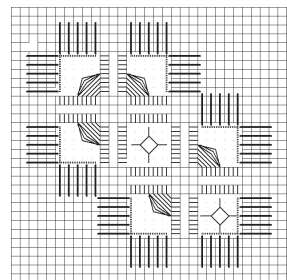
Symbols Fibres and Beads

- DMC #8 Perle Cotton white or a colour or an overdyed!
- DMC #12 Perle Cotton in matching/complementary shade
- 4mm silk ribbon - pink or any overdyed or colours you like
- 4mm silk ribbon - mauve or complementing colour
- Silk Floss - green dark to complement your colours above
- Silk Floss - green med to complement your colours above
- Silk Floss - white or other colour to match Perle #8
- ✕ Mill Hill petite beads #40557 - gold or other colour you like
- Mother of Pearl button or other button you have!
- Beads or Flower buttons for corners if you like..!

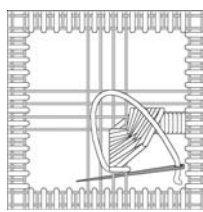
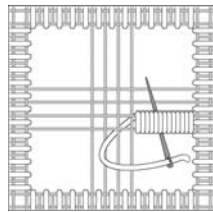
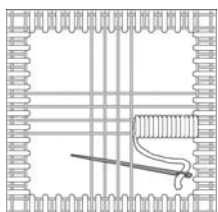
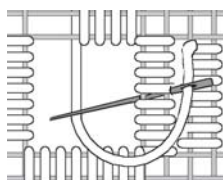
INSTRUCTIONS:

1. KLOSTER FRAME: Work Kloster Blocks and Satin Stitches with 1 strand of DMC Perle Cotton #8 white or other colour thicker perle.

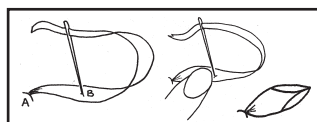
2. CENTRE: Using 2 strands of Kreinik Mori #8000 white (or other colour) Cross Stitch according to symbols on Main Chart.



3. HARDANGER: Cut and remove appropriate fabric threads shown as dotted lines on diagram. **Note:** Diagram shows one quarter of the Hardanger. Using 1 strand of DMC #12 Perle Cotton in matching colour, work Wrapped Bars with Dove's Eyes and Partial Greek Crosses.



4. SUMMER FLOWER CORNERS: Using 1 strand of Silk Floss dark green, Backstitch the stems. Work Japanese Ribbon Stitch for the flower petals: use 4mm silk ribbon for the petals shown using a light line, and work the petals shown as solid black with complementary colour of 4mm silk ribbon. Using 2 strands of Silk Floss green med, work Lazy Daisy leaves. Straight Stitch some colour in the centre of each leaf using 2 strands of Silk Floss dark green. Using 1 strand of floss matching flower petals, attach Mill Hill petite bead #40557 gold or other colour, in the centre of each flower as shown on Main Chart.



FINISHING: Front: Backstitch around the outside of design area (shown on Main Chart as a solid line) with 1 strand of DMC #12 Perle Cotton. Back: Using 1 strand of DMC #12 Perle Cotton, Backstitch a similar border on a second piece of fabric. Trim both the front and back pieces 1/2" away from Backstitched borders. Zig zag raw edges. Using the Backstitched borders as guides, fold over and finger press the raw edges to the wrong sides. Using 1 strand of DMC #12 Perle Cotton, overcast the edges together along the Backstitched borders without piercing the fabric. Match a corner of one of the pieces, to a center of the side of the other piece. Start by coming out through a corner of the front piece then go through a stitch at center of one of the sides of the back piece. Overcast until you come to the corner of the back piece where it meets the center of the front piece. Stuff the Biscornu tightly with polyester fiber fill and continue overcasting the edges carefully. Using 2 strands of Silk Floss and a #9 Straw/Milliners needle, attach a Mother of Pearl or other matching button in the center of both the front and back of tuffet. Pull tightly after each go-through, making a pronounced indentation in the centre. Run your needle through numerous times, and wind around button before plunging your needle right through, pull through, and cut near fabric.

THEA DUECK KITS, SAMPLER DESIGNS, ACCESSORY PACKS
CHARMS AND TINY PACKS FROM THE VICTORIA SAMPLER

"Summer Tuffet"
©Copyright 2009 by Thea Dueck
The Victoria Sampler
Website: www.victoriasampler.com

The
Victoria
SAMPLER