

# Fall Biscornu

## 2nd Prize Version by Linda R. !

Acorn version of Original Design by Thea Dueck at the Victoria Sampler

This is Linda R.'s version of Thea's Fall Biscornu Free Pattern design. In the VS Yahoo Group, Linda won second prize in our FREE PATTERN STITCH CONTEST October 2009, and Cathy was the 1st prize winner! You can now also stitch these lovely interpretations. These are the threads and materials Linda used. Even though the contest is now over, you can still have fun stitching this little Biscornu, and you can still add a picture of any version of the Fall Biscornu to the Contest Photo Album. Additionally, a picture of the '1st prize' Fall Biscornu, including Cathy's list of materials, is also published on our website in the Free Pattern section. Stitch your own version of the original pattern, finish it, and upload a clear large photo in the Victoria Sampler FREE PATTERN Photo Album in the Main Victoria Sampler Yahoo group for fun! Remember the Contest has ended on October 1st, 2009, but you can now add your own photo to the album just for the fun of it. We'll keep the album up for a few more months this Fall.. so stitch your beautiful Fall Tuffet today!!

Design area: 44h x 44w (3.14" x 3.14")  
Model: 28ct Lt. Mocha Cashel Linen  
(cut 7.5" X 7.5" for ornament)

### Symbols Fibres and Beads

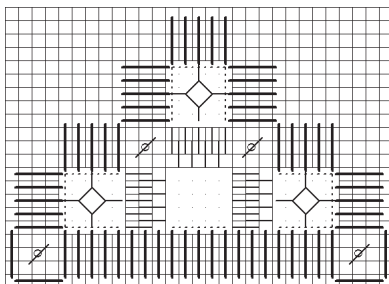
- DMC #8 Perle Cotton #950 - Sp Flesh Lt
- DMC #12 Perle Cotton #950 - Sp Flesh Lt
- DMC Floss #950 = Sp Flesh Lt
- DMC Floss #434 - brown lt
- Kreinik #4 Braid #021HL metallic - copper
- Caron Wildflowers #173 - "Redwood"
- ◆ Thread Works #130 - "Fantasy Island"
- Mill Hill seed bead #03038 - Antique Ginger
- SJ Designs Petite Bead #1824 - golden bronze
- Jo Anns - Acorn Buttons

## INSTRUCTIONS:

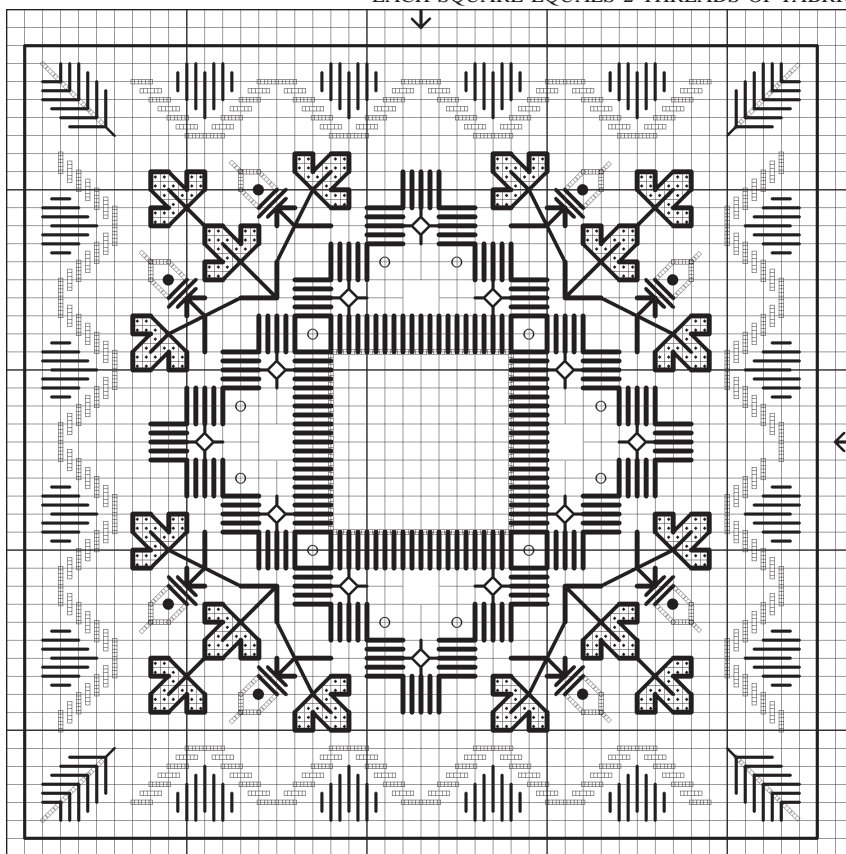
**1. SATIN STITCHES AND KLOSTER BLOCKS:** Work Satin Stitches and Kloster Blocks with 1 strand of DMC #8 Perle Cotton #950 Sp Flesh Lt., as shown on Main Chart. Using 1 strand of Kreinik #4 Braid #021HL copper Backstitch inside of the Satin Stitches as shown on Main Chart.

**2. HARDANGER:** Cut and remove appropriate fabric threads shown as dotted lines on diagram. **Note:** Diagram shows one quarter of the Hardanger. Using 1 strand of DMC #12 Perle Cotton #950 Sp Flesh Lt, work Woven Bars with Dove's Eyes. Attach SJ Designs petite bead #1824 golden bronze with 1 strand of DMC Floss #950 Sp Flesh Lt, according to symbols on Main Chart. Go through each bead twice to ensure stability.

**3. ACORN AND LEAVES CORNERS:** Cross Stitch the leaves over ONE fabric thread with 1 strand of Thread Works #130 "Fantasy Island", as shown on Main Chart. Using 2 strands of DMC Floss #434 brown lt Backstitch the stems to the leaves and acorns. Satin Stitch the base of the acorns with 2 strands of DMC Floss #434 brown lt. Using 1 strand of DMC Floss #434 brown lt Backstitch around the leaves. Attach Mill Hill seed bead #03038 antique ginger



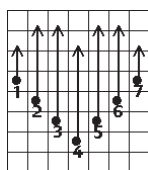
EACH SQUARE EQUALS 2 THREADS OF FABRIC



MAIN CHART

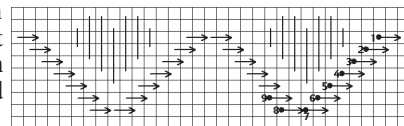
COPYRIGHT © THEA DUECK 2009

with 1 strand of DMC Floss #950 Sp Flesh Lt, according to symbols on Main Chart. Go through each bead twice to ensure stability. Using 1 strand of Kreinik #4 Braid #021 copper Backstitch the acorn outline.



**4. HEARTS AND LEAVES BORDER:** Using 1 strand of Caron Wildflowers #173 "Redwood" Satin Stitch the hearts around outside of design. Straight Stitch the stem and leaves with 1 strand of Caron Wildflowers #173 "Redwood". Using 1 strand of Kreinik #4 Braid #021HL copper Backstitch the center line on each

leaf. Work horizontal Straight Stitches for the Zig Zag with 1 strand of Kreinik #4 Braid #021HL copper.



**FINISHING:** Front: Backstitch around the outside of design area (shown on Main Chart as a solid line) with 2 strands of DMC Floss #950 Sp Flesh Lt. Back: Repeat Step 4 as on front. Using 2 strands of DMC Floss #950 Sp Flesh Lt Backstitch around outside border on a second piece of fabric. Trim both the front and back pieces 1/2" away from Backstitched borders. Zig zag raw edges. Using the Backstitched borders as guides, fold over and finger press the raw edges to the wrong sides. Using 2 strands of DMC Floss #950 Sp Flesh Lt, overcast the edges together along the Backstitched borders without piercing the fabric. **Note:** Attach a Mill Hill seed bead #03038 antique ginger to every other stitch. Match a corner of one of the pieces, to a center of the side of the other piece. Start by coming out through a corner of the front piece then go through a stitch at center of one of the sides of the back piece. Overcast until you come to the corner of the back piece where it meets the center of the front piece. Stuff the Biscornu tightly with polyester fiber fill and continue overcasting the edges carefully. Using 2 strands of DMC Floss #950 Sp Flesh Lt and a #9 Straw/Milliners needle, attach a acorn button in the center of both the front and back of biscornu. Pull tightly after each go-through, making a pronounced indentation in the centre. Run your needle through numerous times, and wind around button before plunging your needle right through, pull through, and cut near linen.

THEA DUECK KITS, SAMPLER DESIGNS, ACCESSORY PACKS CHARMS AND TINY PACKS FROM THE VICTORIA SAMPLER

"Fall Biscornu 2nd Place Finalist"  
©Copyright 2009 by Thea Dueck  
The Victoria Sampler  
Website: www.victoriasampler.com

The  
Victoria  
SAMPLER