



# Jest-in-Fun™



# Jest-in-Fun™



Bill D. Morehead, the son of Ruth J. Morehead, has earned the reputation of an artist and designer for his cheerful and colorful characters that express the love and happiness of his environment. Mr. Morehead's clown characters have been adapted to counted cross stitch designs to bring love and happiness into your home.

## CONTENTS



Special Instructions .....	1
Have A Heart .....	2-3
Don't Keep Me Dangling .....	4-5
You're So Sweet .....	6-7
Guess Who Loves You .....	8-9
Here Is My Heart .....	10-11
Stay Happy .....	12 & 17
Color Centerfold .....	13-16
Join My Parade .....	18-19
My Punkin' .....	20-21
Let Your Little Lights Shine .....	22-23
May Your Christmas Be Bright .....	24-25
Christmas Is Comin' .....	26-27
Have A Beary Merry Christmas .....	28

## COLOR COMPARISON CHART

The following are close shade substitutions. Those within parentheses ( ) are not exact matches, but may be suitable substitutions.

DMC	Susan Bates	DMC	Susan Bates	DMC	Susan Bates
White .....	1	644 .....	830	822 .....	(387)
Ecru .....	926	647 .....	(8581)	826 .....	(161)
310 .....	403	666 .....	46	828 .....	(158)
318 .....	(399)	703 .....	238	911 .....	(205)
349 .....	13	712 .....	(387)	912 .....	205
350 .....	(11)	720 .....	326	930 .....	(922)
351 .....	(11)	721 .....	(324)	932 .....	(920)
352 .....	(10)	722 .....	(323)	938 .....	381
353 .....	(8)	726 .....	295	945 .....	(347)
415 .....	398	727 .....	293	970 .....	(316)
433 .....	(371)	738 .....	942	986 .....	(246)
436 .....	(363)	743 .....	297	987 .....	(244)
437 .....	362	744 .....	(301)	988 .....	(243)
469 .....	(267)	745 .....	(300)	989 .....	(242)
470 .....	267	762 .....	397	3326 .....	(25)
471 .....	(266)	801 .....	(357)	3347 .....	(266)
519 .....	(167)	817 .....	19	3348 .....	265

### First Printing

©Morehead Inc.

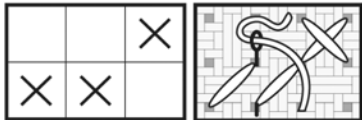
©1986 Designs by Gloria & Pat, Inc.

All rights reserved. Printed in the United States of America. Except as permitted under the United States Copyright Act of 1976, no part of this publication may be reproduced or distributed in any form or by any means, or stored in a data base or retrieval system, without the prior written permission of the publisher.

The contents of this book have been prepared and presented in good faith, with every effort to be accurate. However, the possibility of human error, printing mistakes or the variation of individual stitching does exist, and we regret that we cannot be responsible for this.

## Cross Stitch Instructions

### Full Cross Stitch

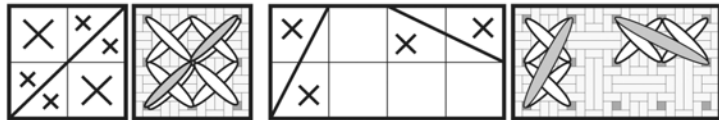


Be sure that all of your stitches lie in the same direction. Bottom stitches should lie from bottom left to upper right and top stitches from bottom right to upper left. Work the stitches from the bottom to the top of the stitch, from left to right, then cross them as

you work from right to left, still coming up at the bottom of each stitch and going down at the top.

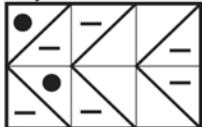
### Full Stitch with Backstitch

When there is a backstitch over one or two squares and the symbol is the same on either side of the backstitch, make a full cross stitch in that square. Add the backstitch last in the color indicated in the instructions.

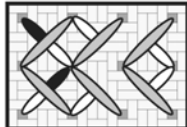


### 1/4 Stitch

1/4 stitches on your chart:



1/4 stitches on fabric:



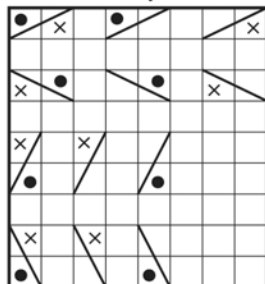
#### Helpful Hints:

1. Stitch from corner to center using the color indicated by the symbol.
2. Backstitch last in the color indicated in the instructions.

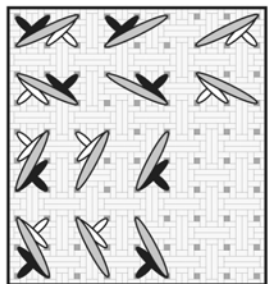
Special Note: If there are NO backstitch instructions given, stitch the backstitch line in the same or most predominant color in that area of the design.

### 3/4 Stitch

3/4 stitches on your chart:



3/4 stitches on the fabric:



#### Helpful Hints:

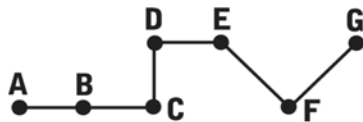
1. If the symbols are different on either side of the backstitch or there is a symbol on just one side of the backstitch, this will indicate that 3/4 stitches should be used in the color indicated by the symbol as shown on left.
2. Add the back-

stitch last in the color indicated in the instructions.

### Backstitching Instructions

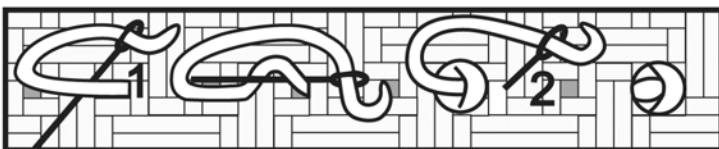
Backstitching (BS) is a part of some designs as outline or as lettering. The purpose of the backstitch is to form a continuous line with each stitch touching. It may travel in any direction.

up at B	-	down at A
up at C	-	down at B
up at D	-	down at C
up at E	-	down at D
up at F	-	down at E
up at G	-	down at F



### French Knot

Use one strand of floss and bring the needle up where indicated on the chart by a dot where the chart lines intersect. Wrap the needle 1 time with the floss. Hold the floss tightly as you insert the needle back into the fabric 1 thread left or right of the hole. Pull through to form a small knot on top of the fabric.



The contents of this book have been prepared and presented in good faith, with every effort to be accurate. However, the possibility of human error, printing mistakes or the variation of individuals does exist, and we regret that we cannot be responsible for this.

## Special Linen Instructions

© Copyright Ginnie Thompson

**YOU WILL LOVE WORKING ON LINEN!** In the natural progression of cross stitching, you may have begun on an evenweave cotton fabric where one "square" on the cloth was equal to one stitch. A first project may have been a tiny flower or heart. Next, most stitchers experience a period in which sayings are popular, each done with a particular person in mind. Then, we go on to projects both useful and beautiful; pillows, clothing accents, birth and wedding samplers, etc.

Then—LINEN! This is the stuff heirlooms are made of. Linen is durable; it has a strength that will outlast cotton. It allows greater flexibility of design. It launders and becomes more beautiful each time. And it is the best; elegant and traditional.

## Tips for Stitching on Linen

### Raveling

Use one strand of a light color to whip the edges of the fabric to prevent raveling.

### Hoopless Stitching

Cross stitch on linen does not require an embroidery hoop. Instead, the hand is held in a relaxed position with the thumb and forefinger grasping the cloth and the little finger anchoring it (see fig. 1). On a tiny piece of fabric, it may be necessary to anchor with the ring finger. However, do not sew with the fabric wrapped over one finger—this may distort the stitches.



Fig. 1

### Knotless Waste Knot

Start with a knotless waste knot. This means to leave the tail of the thread on top of the fabric, up and out of the way (as in fig. 2). When the thread is finished, work it under stitches on the back, either in the direction of the stitches or vertically. Then rethread the original tail and work it under stitches on the back in the same way.



Fig. 2

### The First Stitch

The first stitch and all subsequent regular stitches should begin at a VERTICAL thread. Why? The vertical threads (shown as shaded in fig. 3) act as little goal posts holding up the under-stitch. At the intersection where the vertical thread lays on top of the horizontal thread, start at the lower left hole. Starting at a vertical thread acts as an early warning system, also. Should a regular stitch suddenly begin at a horizontal thread, it is a sign that threads have been counted incorrectly.

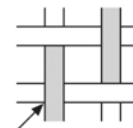


Fig. 3

### Sewing Motion

A sewing stitch, one scooping movement in and out, is used with linen (see fig. 4). Stitches should be neither loose and sloppy nor so tight that the spaces between the linen threads are enlarged. If light can be seen across the top of a row of stitches, the tension is too tight. Correct tension results in flat stitches that do not distort the background weave.



Fig. 4

Do the bottom stitches first, then cross back (see fig. 5). The reverse side will be vertical lines (fig. 6).

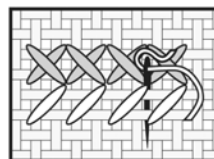


Fig. 5

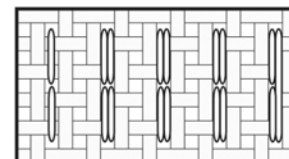


Fig. 6

### 180 Degrees

It is very helpful sometimes to turn your work upside down (180 degrees), turning the chart as well, but never turn the work only halfway around (90 degrees). This causes the direction of the top stitch to change, disrupting the texture of the finished piece.

### Laundering

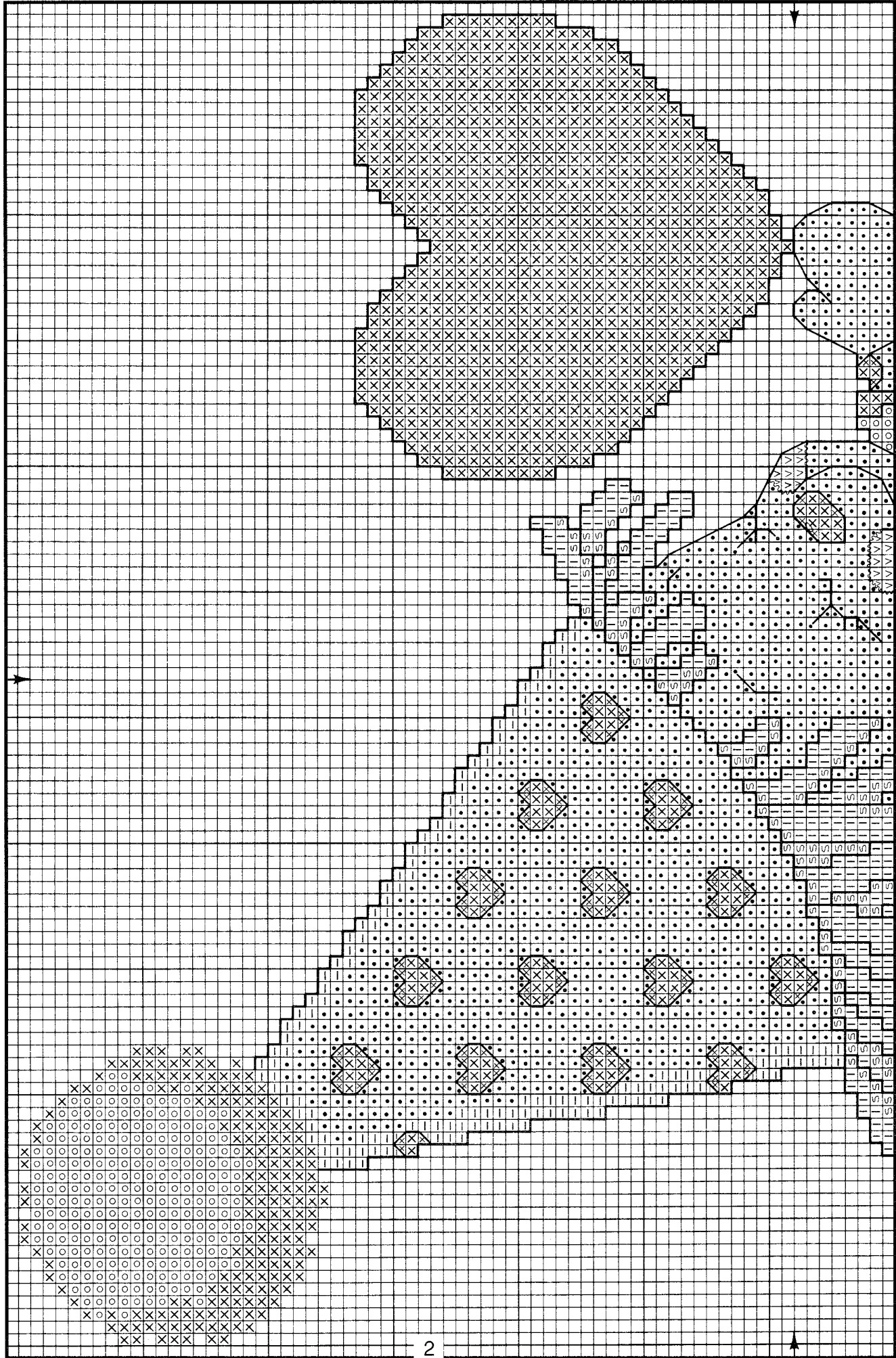
Launder your needlework only if it has become soiled. If it is clean, lay it face down on a terry cloth towel on the ironing board and wet it with a sprayer or a damp cloth, then iron dry. This allows the linen to shrink slightly, making the stitches stand up beautifully. If soap is required, hand wash with mild soap in cold water. Rinse thoroughly, handling the fabric gently; roll it in a towel and gently squeeze out excess moisture, then iron dry face down on a terry cloth towel.

### Mounting

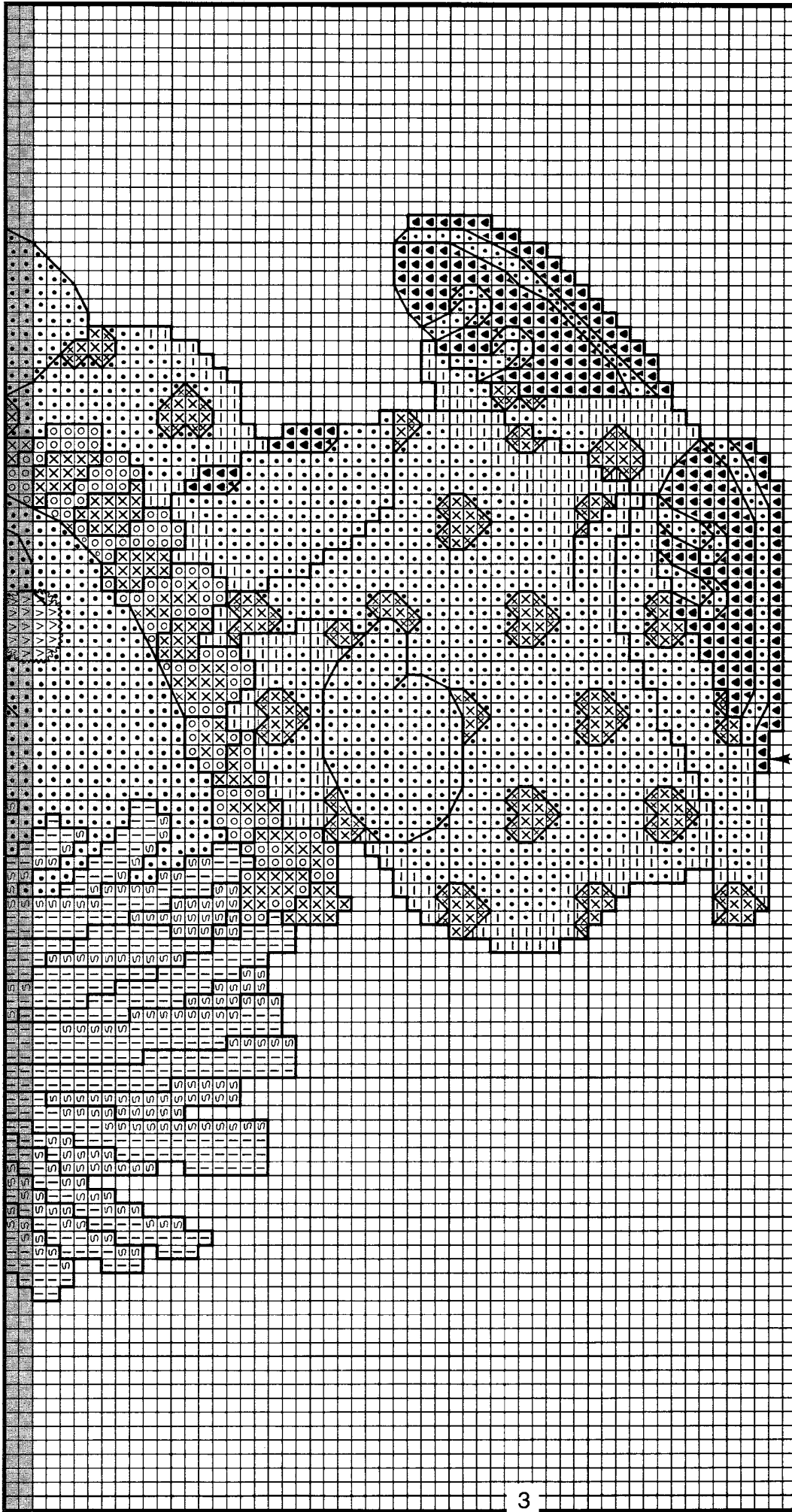
Mount your finished needlework as you would mount cotton fabrics. You'll discover as you explore the world of linen stitching that linen is extremely versatile and can be finished in a variety of ways other than framing.

*Have A Heart*

Morehead Inc.  
©1986 Designs by Gloria & Pat, Inc.



Shaded area indicates last two rows stitched on previous page.



**Color**

- White
- Black
- Peach Flesh
- Coral-Med.
- Coral-Dk.
- Pearl Grey-Vy. Lt.
- Orange Spice-Lt.
- Orange Spice-Med.
- Coffee Brown-Dk.
- Orange Spice-Dk.

**DMC**

- White
- 310
- 353
- 350
- 349
- 762
- 722
- 721
- 801
- 720

Add a little white stitch to nose where marked  $\circ$ .  
 Backstitch on cheeks in 353.  
 Backstitch all hearts and nose in 349. (except when hearts are touching outside edges or other backstitch.)  
 Backstitch hair in 720.  
 Backstitch buttons and shoes in 310.  
 All other backstitch in 801.

**Design Area** .....124 x 106

Design Area	Size To	Cut Fabric
Hardanger	5 5/8 x 5	12 x 11
Aida 18	7 x 6 1/8	13 x 13
Aida 14	8 7/8 x 7 7/8	15 x 14
Aida 11	11 3/8 x 10	18 x 16

**Model**

Fabric: White Aida 14 ct.  
 Floss: Cross Stitch 2 strands  
 Backstitch 1 strand

**Note:** Read special instructions on page 1.

# Don't Keep Me Dangling

## DMC

- White
- ▲ 310
- ∨ 353
- 350
- × 349
- ▼ 801
- ◆ 932
- 762
- ┌ 722
- 5 721
- 720

## Color

- White
- Black
- Peach Flesh
- Coral-Med.
- Coral-Dk.
- Coffee Brown-Dk.
- Antique Blue-Lt.
- Pearl Grey-Vy. Lt.
- Orange Spice-Lt.
- Orange Spice-Med.
- Orange Spice-Dk.

Add a little white stitch to eyes and nose where marked 0.

Mouth—Make a French Knot in 801.

Backstitch on cheeks in 353.

Backstitch small hearts, around heart on chain, and nose in 349. (except when hearts are touching outside edges or other backstitch.)

Backstitch hair in 720.

Backstitch buttons and shoes in 310.

All other backstitch in 801.

Design Area	.....	130 x 82	Size To Cut Fabric
Hardanger	.....	5 7/8 x 3 7/8	12 x 10
Aida 18	.....	7 1/4 x 4 3/4	14 x 11
Aida 14	.....	9 1/4 x 6	16 x 12
Aida 11	.....	11 7/8 x 7 3/4	18 x 14

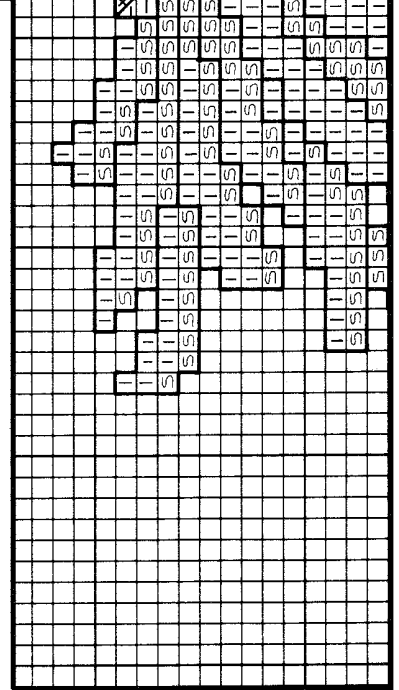
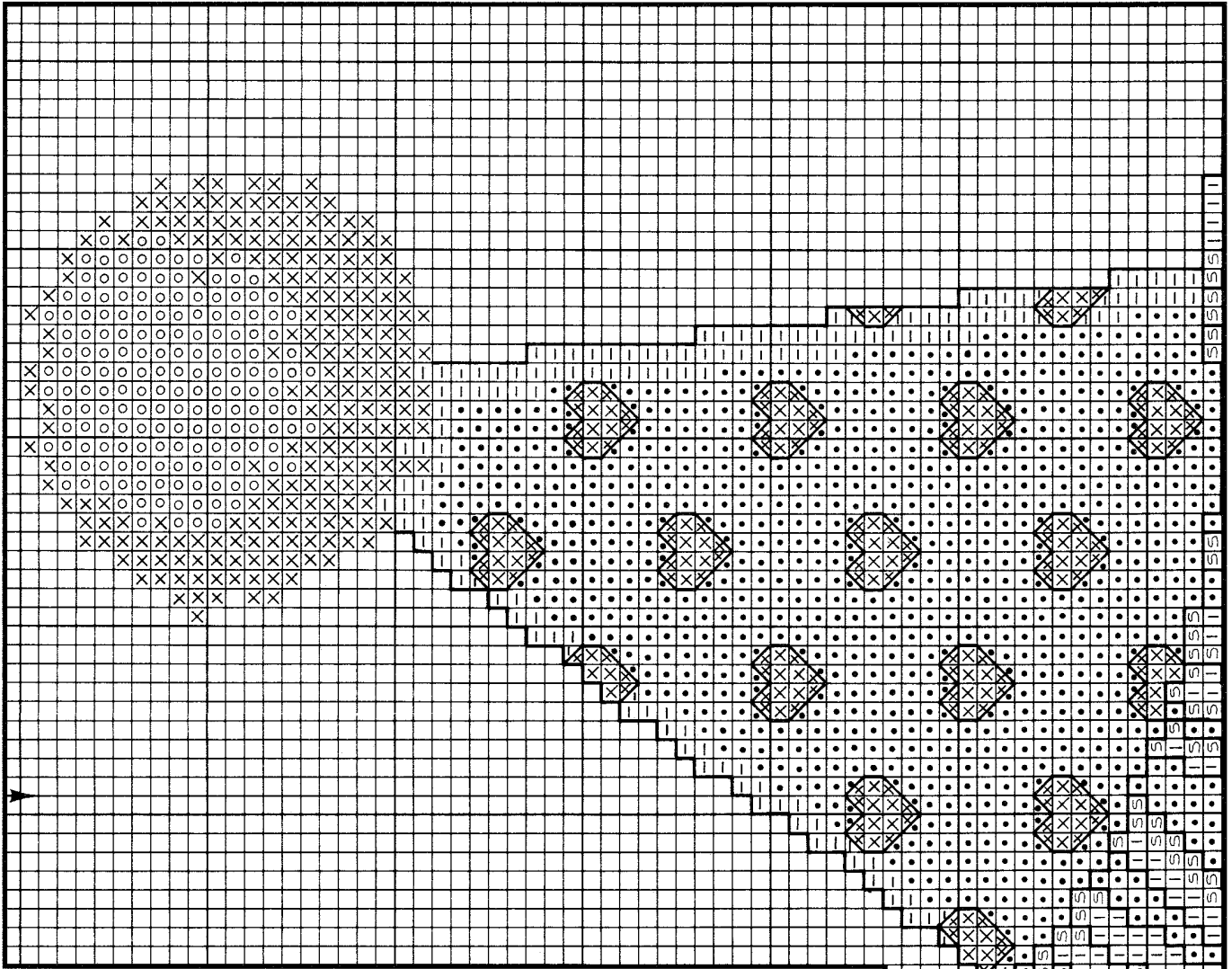
## Model

Fabric: White Aida 14 ct.

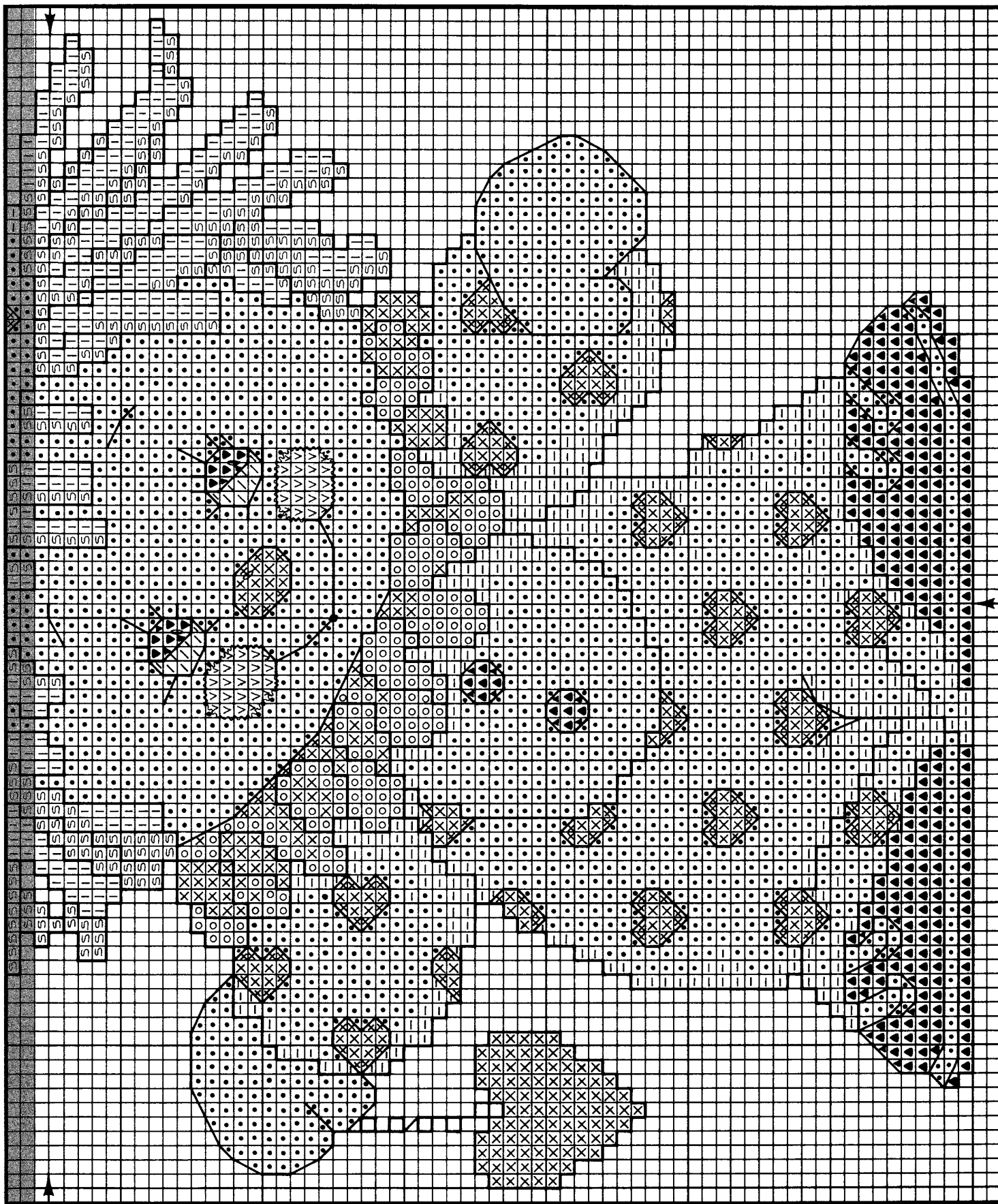
Floss: Cross Stitch 2 strands

Backstitch 1 strand

**Note:** Read special instructions on page 1.

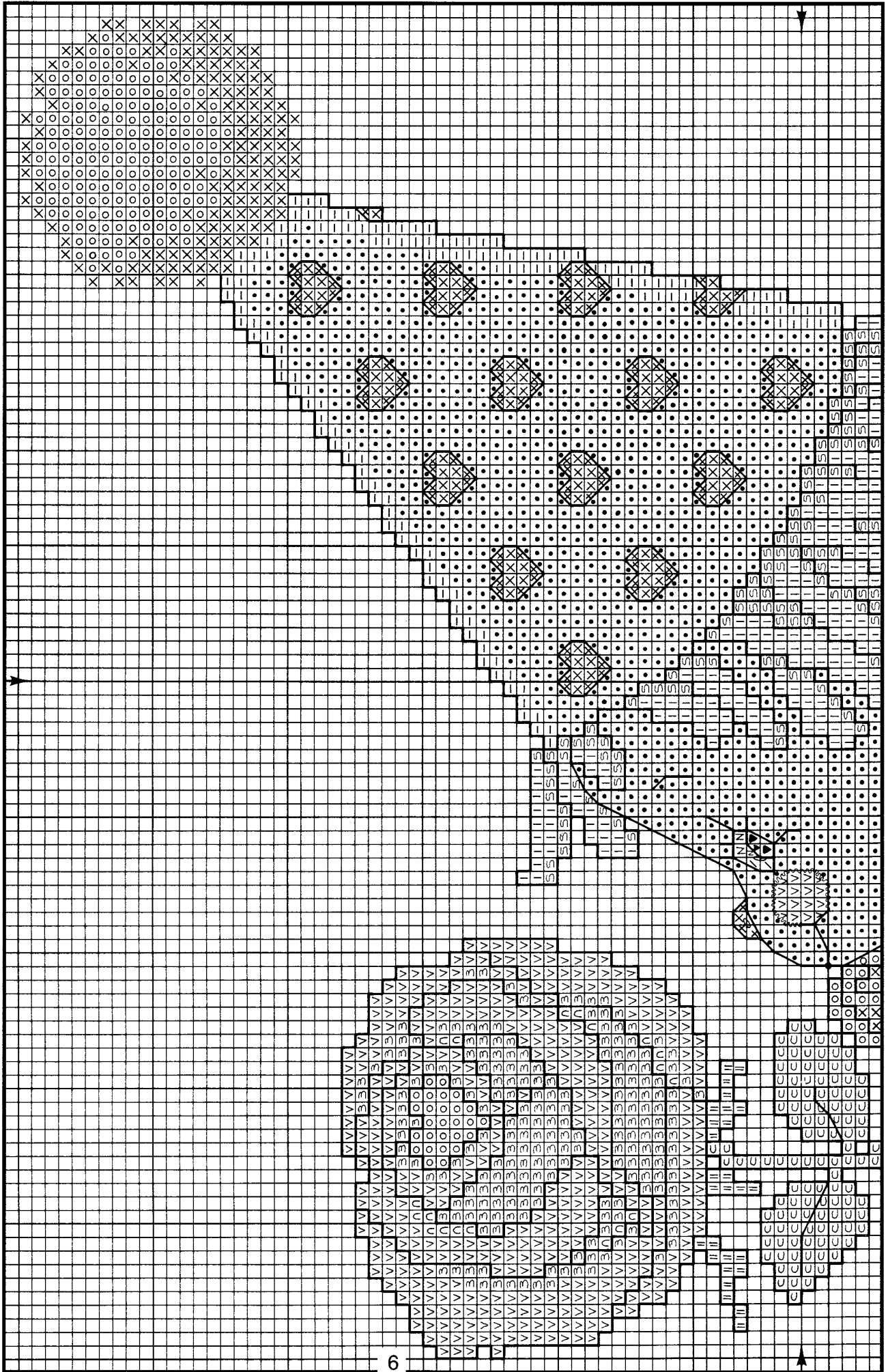


Shaded area indicates last two rows stitched on previous page.

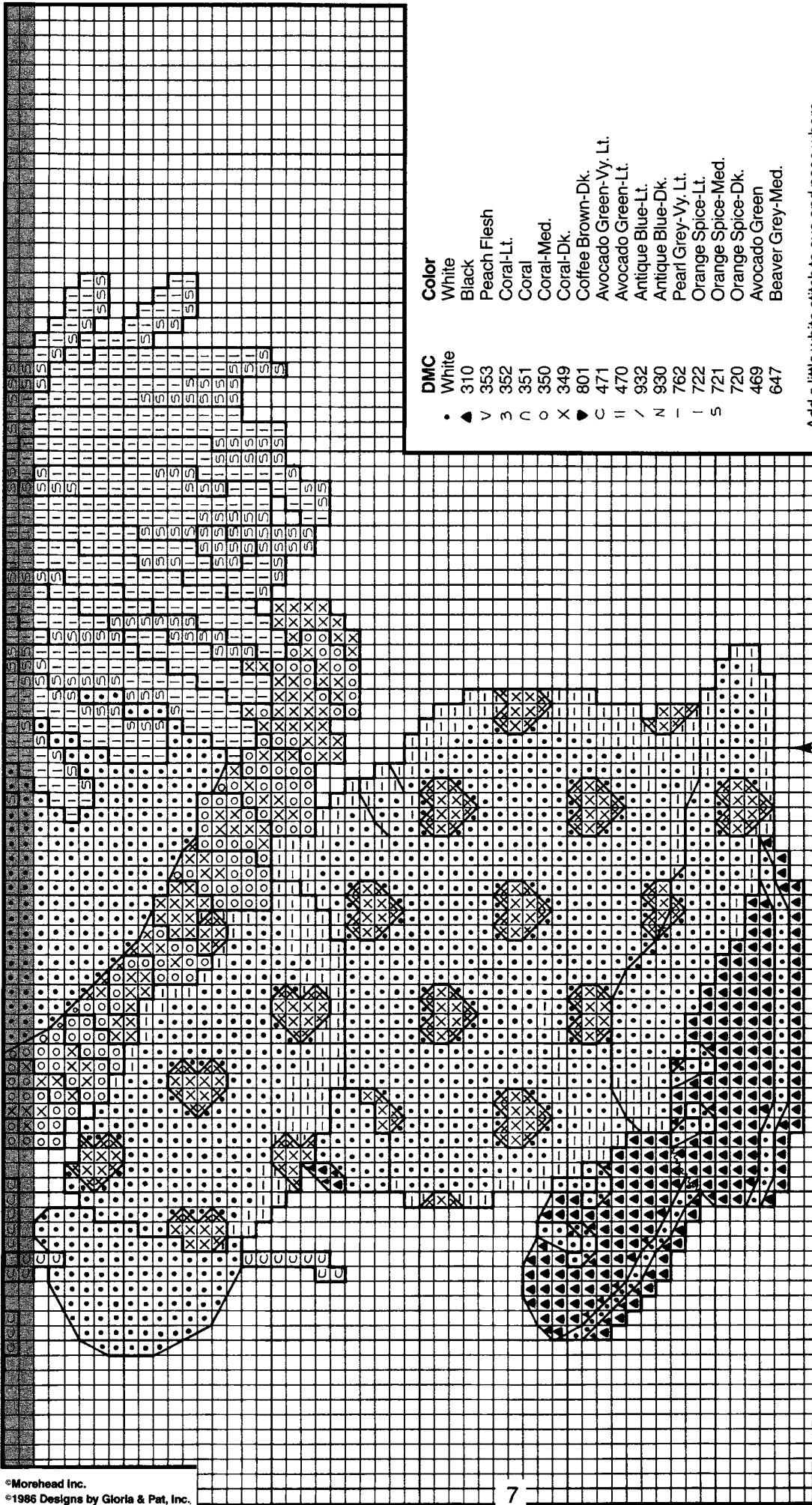


*You're So Sweet*

©Morehead Inc.  
©1986 Designs by Gloria & Pat, Inc.



Shaded area indicates last two rows stitched on previous page.



- DMC**  
White  
• 310  
▲ 353  
∨ 352  
3 351  
∩ 350  
○ 349  
X 801  
C 471  
∥ 470  
∕ 932  
N 930  
- 762  
| 722  
5 721  
720  
469  
647
- Color**  
White  
Black  
Peach Flesh  
Coral-Lt.  
Coral  
Coral-Med.  
Coral-Dk.  
Coffee Brown-Dk.  
Avocado Green-Vy. Lt.  
Avocado Green-Lt.  
Antique Blue-Lt.  
Antique Blue-Dk.  
Pearl Grey-Vy. Lt.  
Orange Spice-Lt.  
Orange Spice-Med.  
Orange Spice-Dk.  
Avocado Green  
Beaver Grey-Med.

Add a little white stitch to eye and nose where marked ∅.

Mouth—Make a French Knot in 801.

Backstitch on cheeks in 353.

Backstitch nose and small hearts in 349. (except when hearts are touching outside edges or other backstitch.)

Backstitch hair in 720.

Backstitch on shoes in 647.

Backstitch button and shoes in 310.

Backstitch flower in 350.

Backstitch leaves and flower stem in 469.

All other backstitch in 801.

**Model**

Fabric: White Aida 14 ct.

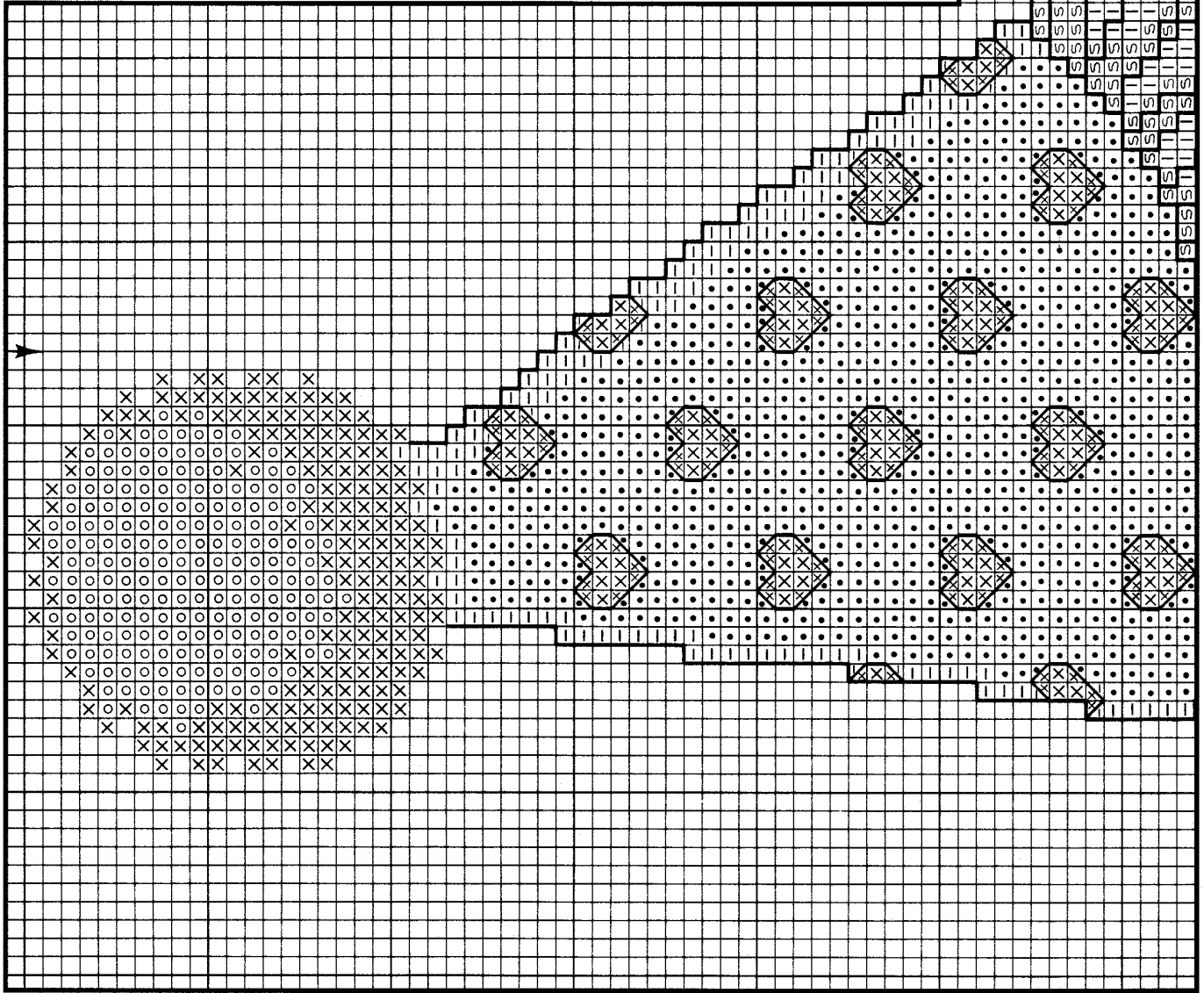
Floss: Cross Stitch 2 strands

Backstitch 1 strand

**Note:** Read special instructions on page 1.

Design Area	..... 116 x 99	Size To Cut Fabric
Hardanger	.....	5 1/2 x 4 1/2
Aida 18	.....	6 5/8 x 5 1/2
Aida 14	.....	8 1/2 x 7 1/8
Aida 11	.....	10 7/8 x 9 1/8
		12 x 11
		13 x 12
		15 x 14
		17 x 16

# Guess Who Loves You



## DMC

- White
- ▲ 310
- 3 353
- N 352
- o 350
- X 349
- ▼ 801
- / 932
- 762
- l 722
- S 721
- 817

## Color

- White
- Black
- Peach Flesh
- Coral-Lt.
- Coral-Med.
- Coral-Dk.
- Coffee Brown-Dk.
- Antique Blue-Lt.
- Pearl Grey-Vy. Lt.
- Orange Spice-Lt.
- Orange Spice-Med.
- Orange Spice-Dk.
- Coral Red-Vy. Dk.

Add a little white stitch to eyes and nose where marked .

Mouth—Make a French Knot in 801.

Backstitch on cheeks and around large heart in 801.

Backstitch nose and small hearts in 349 (except when hearts are touching outside edges or other backstitch.)

Backstitch hair in 720.

Backstitch bow on large heart in 817.

Backstitch shoe in 310.

All other backstitch in 801.

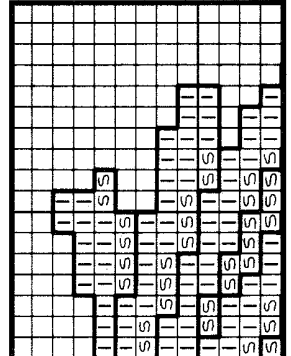
**Design Area** ..... 131 x 69      **Size To Cut Fabric**

Hardanger .....	6 1/8 x 3 1/8	13 x 10
Aida 18 .....	7 1/2 x 3 7/8	14 x 10
Aida 14 .....	9 7/8 x 5	16 x 11
Aida 11 .....	12 1/4 x 6 3/8	19 x 13

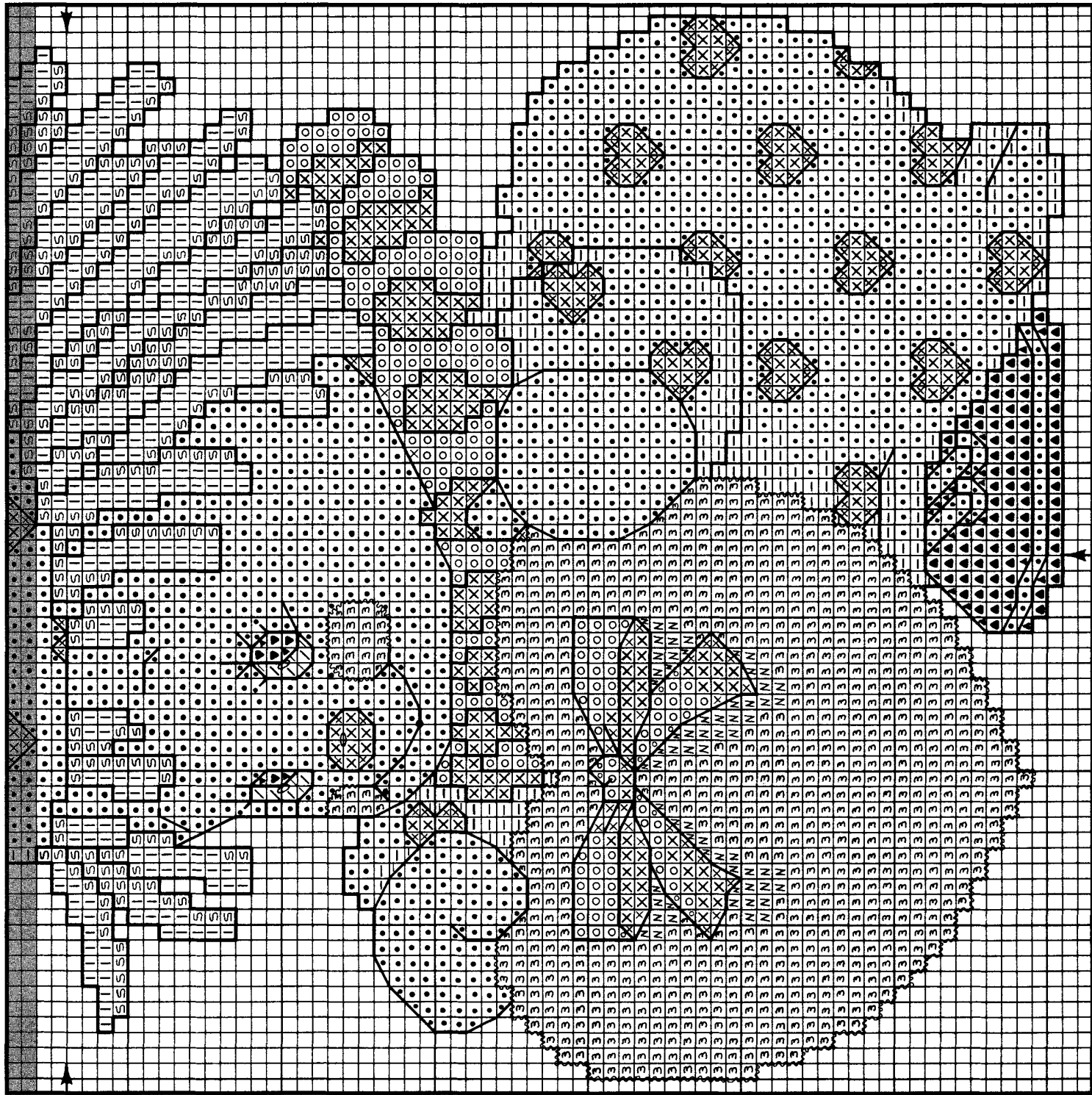
## Model

Fabric: White Aida 14 ct.  
Floss: Cross Stitch 2 strands  
Backstitch 1 strand

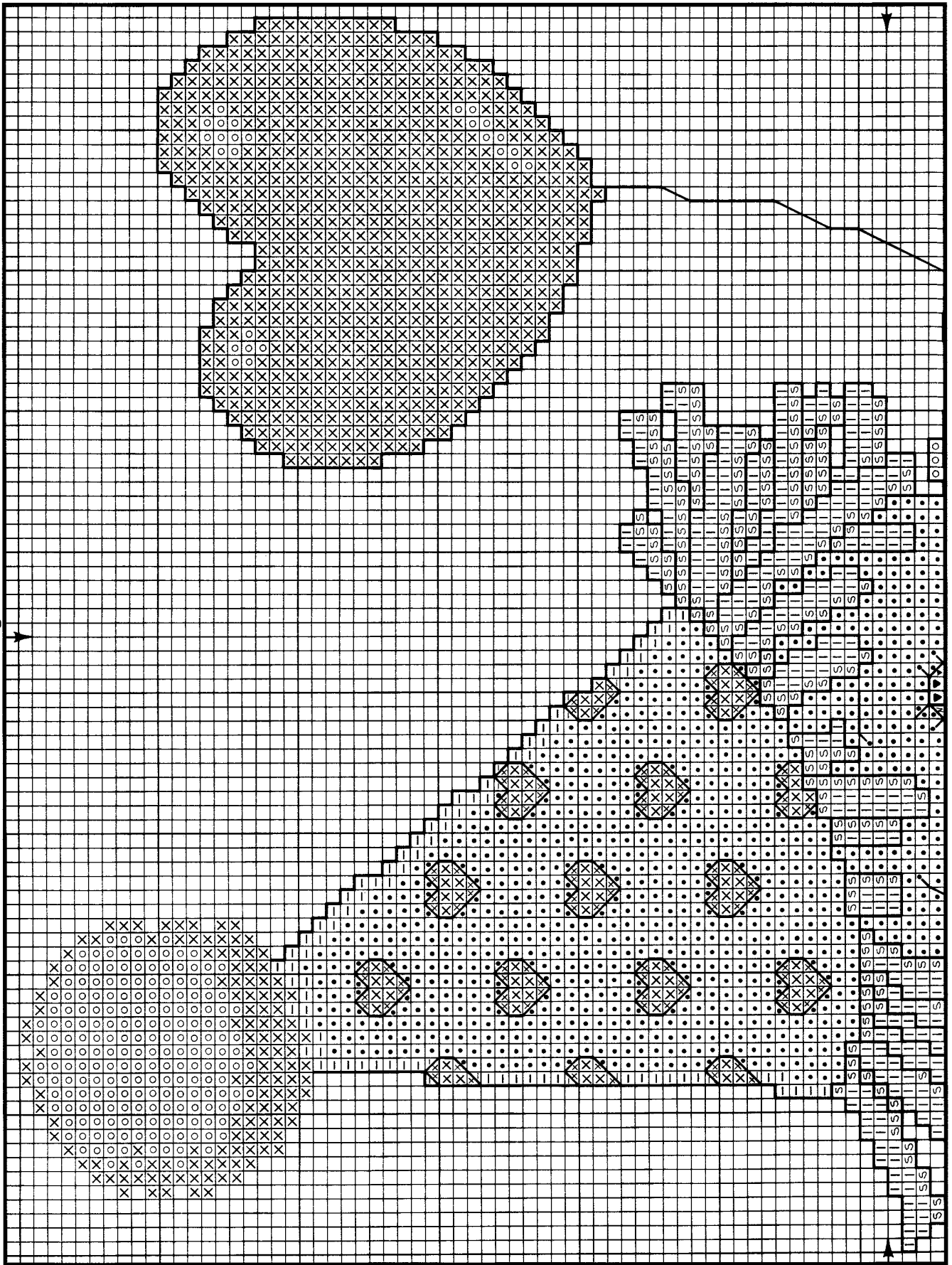
**Note:** Read special instructions on page 1.



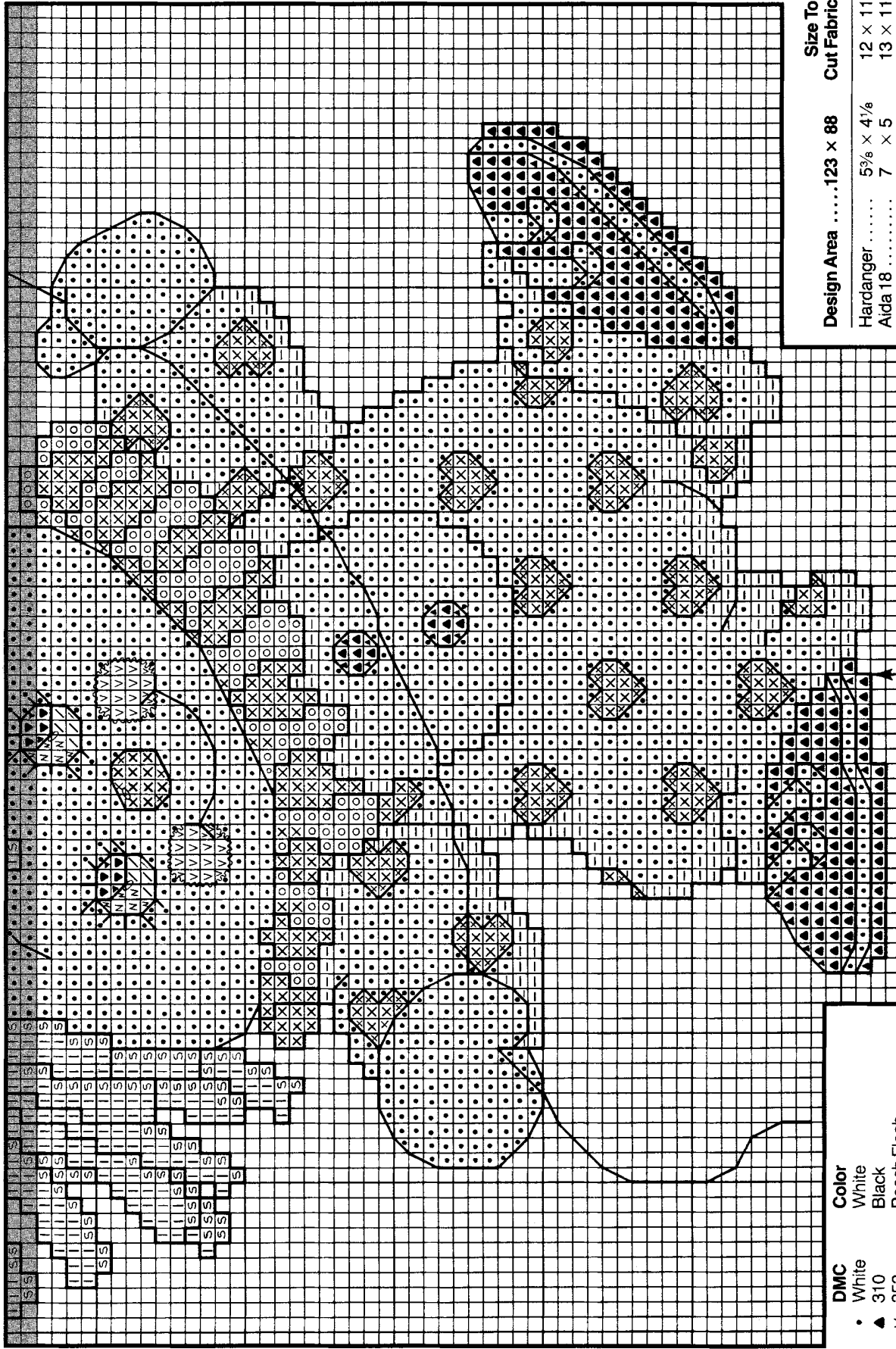
Shaded area indicates last two rows stitched on previous page.



*Here Is My Heart*



Shaded area indicates last two rows stitched on previous page.



Design Area	.....	123 x 88	Size To Cut Fabric
Hardanger	.....	5 3/8 x 4 1/8	12 x 11
Aida 18	.....	7 x 5	13 x 11
Aida 14	.....	8 7/8 x 6 3/8	15 x 13
Aida 11	.....	11 1/8 x 8 1/4	18 x 15

**Model**

Fabric: White Aida 14 ct.  
 Floss: Cross Stitch 2 strands  
 Backstitch 1 strand

*Note: Read special instructions on page 1.*

**Color**

- |     |                    |
|-----|--------------------|
| •   | White              |
| ▲   | Black              |
| ∨   | Peach Flesh        |
| ○   | Coral-Med.         |
| ×   | Coral-Dk.          |
| ▼   | Coffee Brown-Dk.   |
| ▲   | Antique Blue-Lt.   |
| N   | Antique Blue-Dk.   |
| -   | Pearl Grey-Vy. Lt. |
| I   | Orange Spice-Lt.   |
| S   | Orange Spice-Med.  |
| 720 | Orange Spice-Dk.   |

~~~~~ Add a little white stitch to eyes and nose where marked ∅.

Backstitch on cheeks in 353.

Backstitch nose, balloon and small hearts in 349. (except when hearts are touching outside edges or other backstitch.)

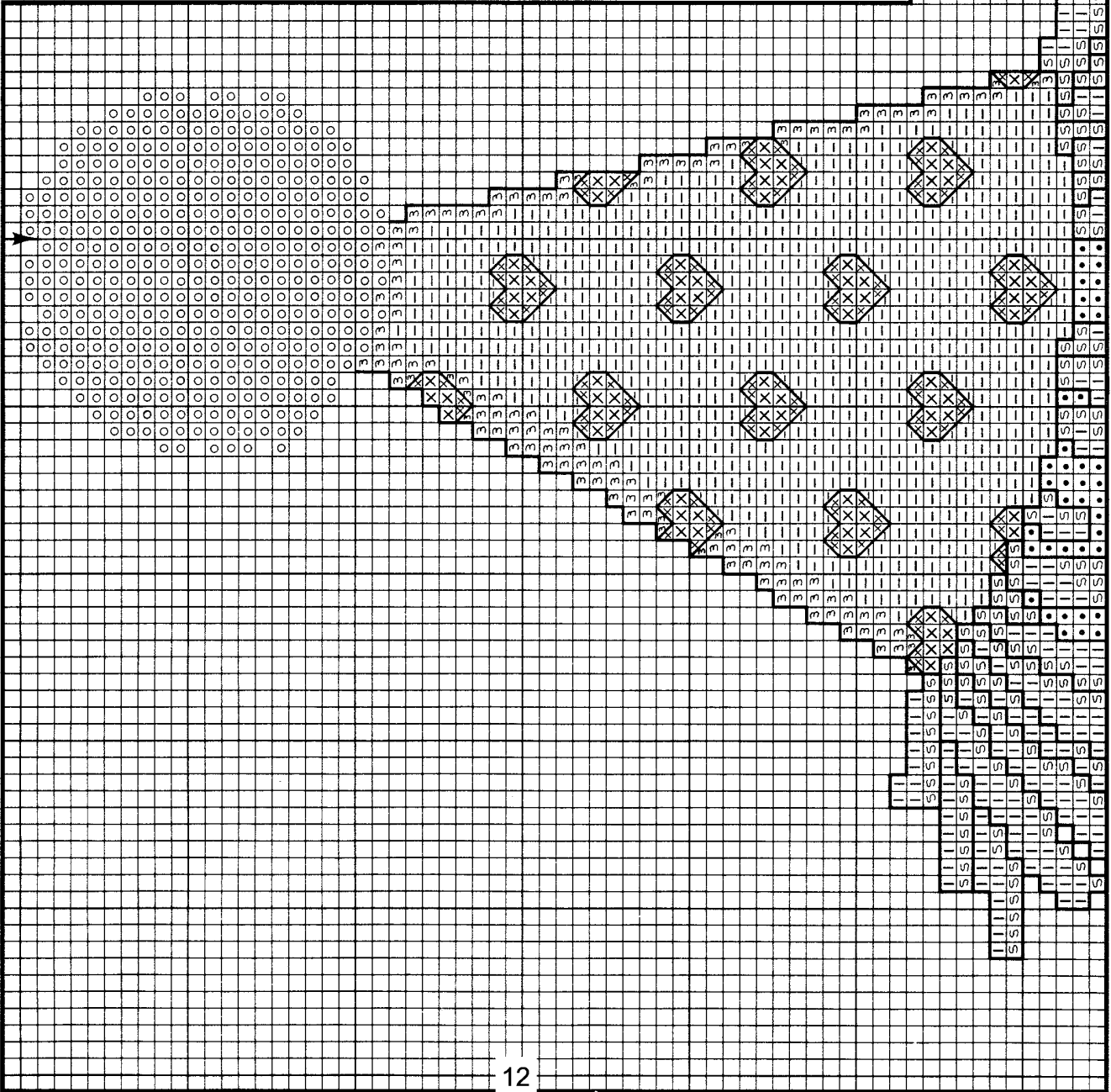
Backstitch hair in 720.

Backstitch shoes and buttons in 310.

All other backstitch in 801.

- DMC**
- White
  - ▲ 310
  - ▼ 353
  - 350
  - × 349
  - ∟ Ecrú
  - ∕ 822
  - N 644
  - ▼ 801
  - 3 519
  - 932
  - / 828
  - ∟ 722
  - S 721
  - 647
  - 720

- Color**
- White
  - Black
  - Peach Flesh
  - Coral-Med.
  - Coral-Dk.
  - Ecrú
  - Beige Grey-Lt.
  - Beige Grey-Med.
  - Coffee Brown-Dk.
  - Sky Blue
  - Antique Blue-Lt.
  - Blue-Ultra Vy. Lt.
  - Orange Spice-Lt.
  - Orange Spice-Med.
  - Beaver Grey-Med.
  - Orange Spice-Dk.



Add a little white stitch to noses where marked ○.

Mouths—Make French Knots in 801.

Backstitch on cheeks in 353.

Backstitch small hearts and clown's nose in 349. (except when hearts are touching outside edges or other backstitch.)

Backstitch hair in 720.

Backstitch on shoes in 647.

Backstitch buttons, shoes and dog's nose in 310.

All other backstitch in 801.

| Design Area | .....131 x 99 | Size To Cut Fabric |
|-------------|---------------|--------------------|
| Hardanger   | .....         | 6 1/8 x 4 1/2      |
| Aida 18     | .....         | 7 1/2 x 5 1/2      |
| Aida 14     | .....         | 9 7/8 x 7 1/8      |
| Aida 11     | .....         | 12 1/4 x 9 1/8     |
|             |               | 13 x 11            |
|             |               | 14 x 12            |
|             |               | 16 x 14            |
|             |               | 19 x 16            |

**Model**  
Fabric: White Aida 14 ct.  
Floss: Cross Stitch 2 strands  
Backstitch 1 strand

**Note:** Read special instructions on page 1.

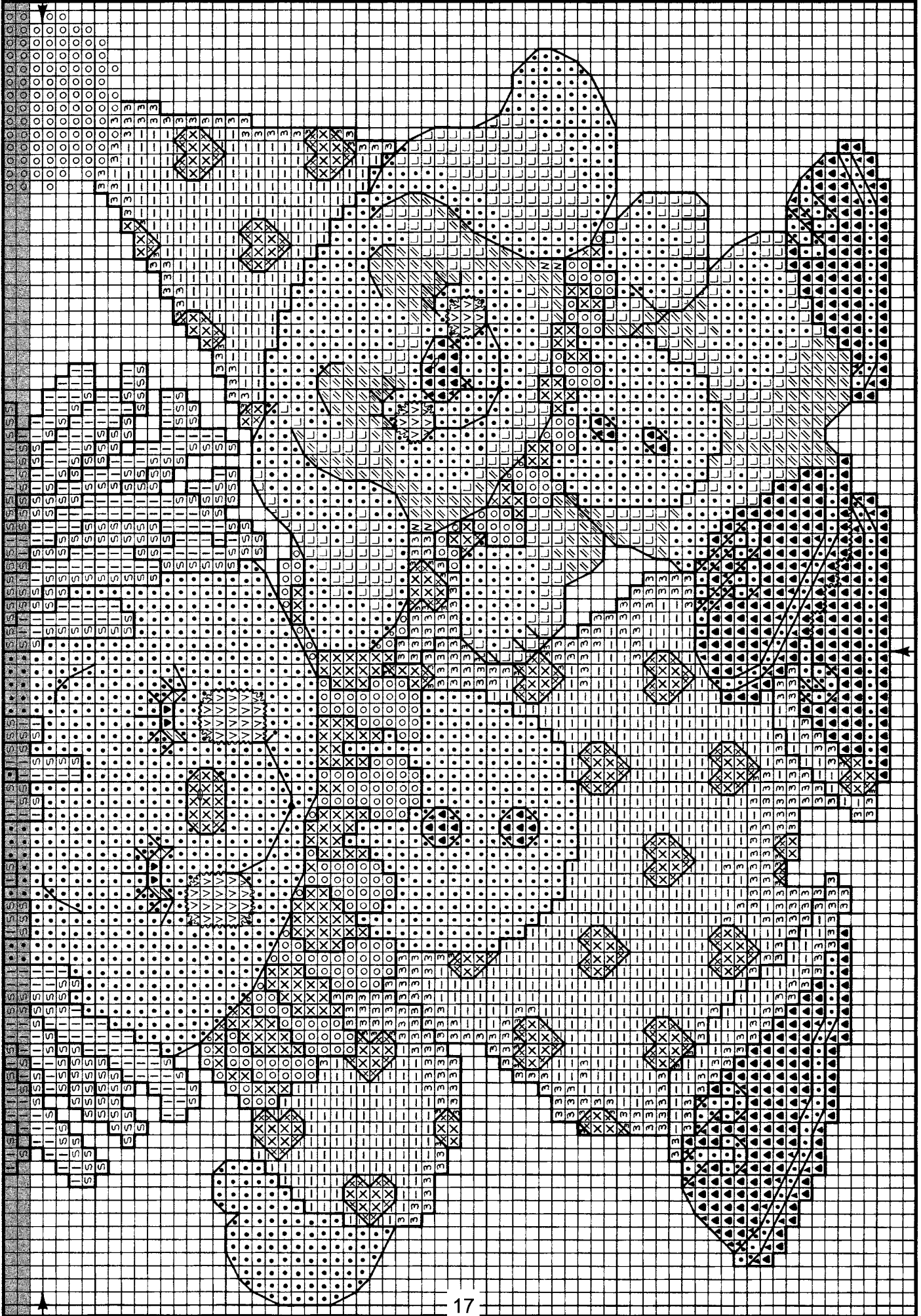




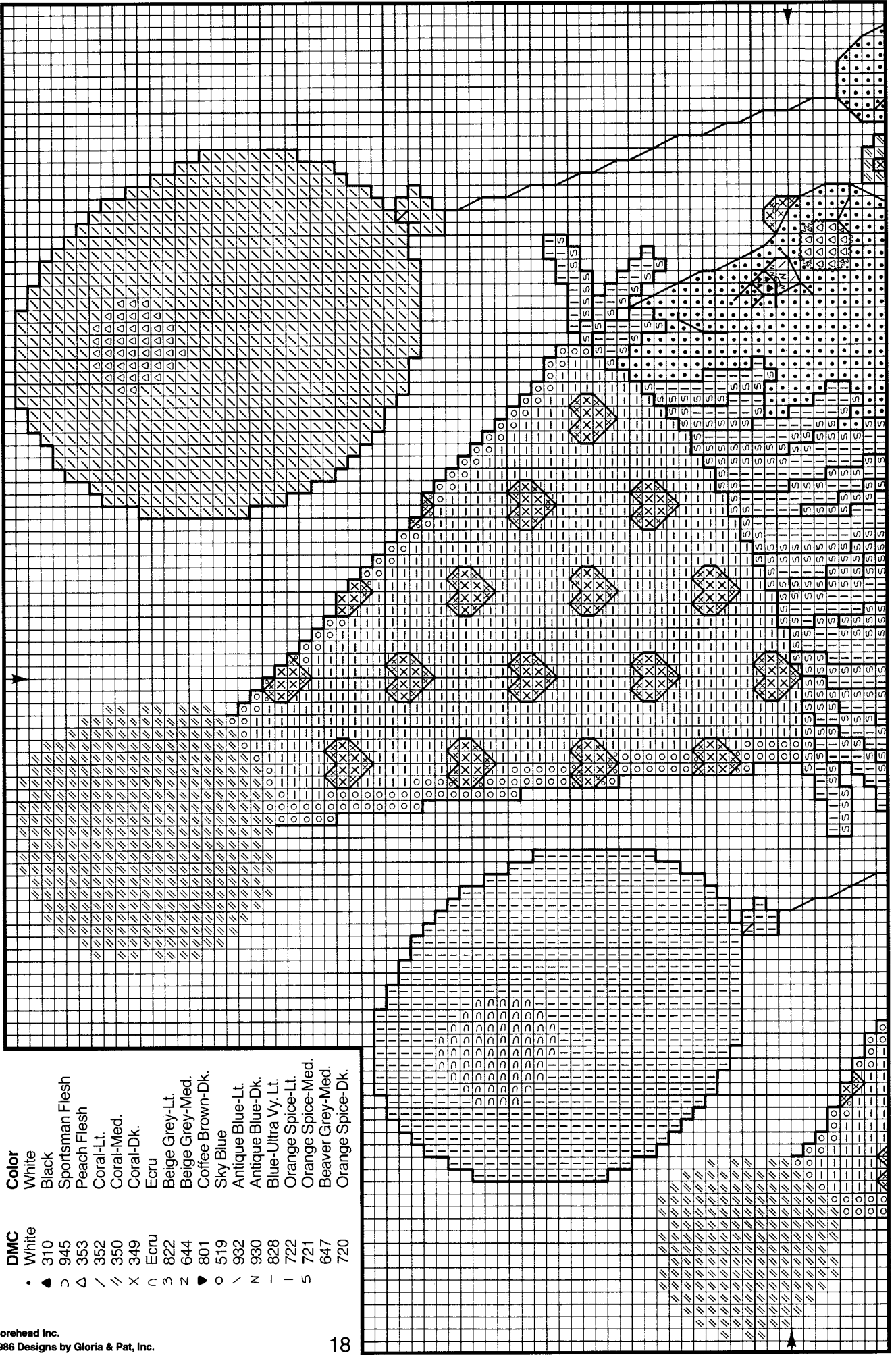




Shaded area indicates last two rows stitched on page 12.

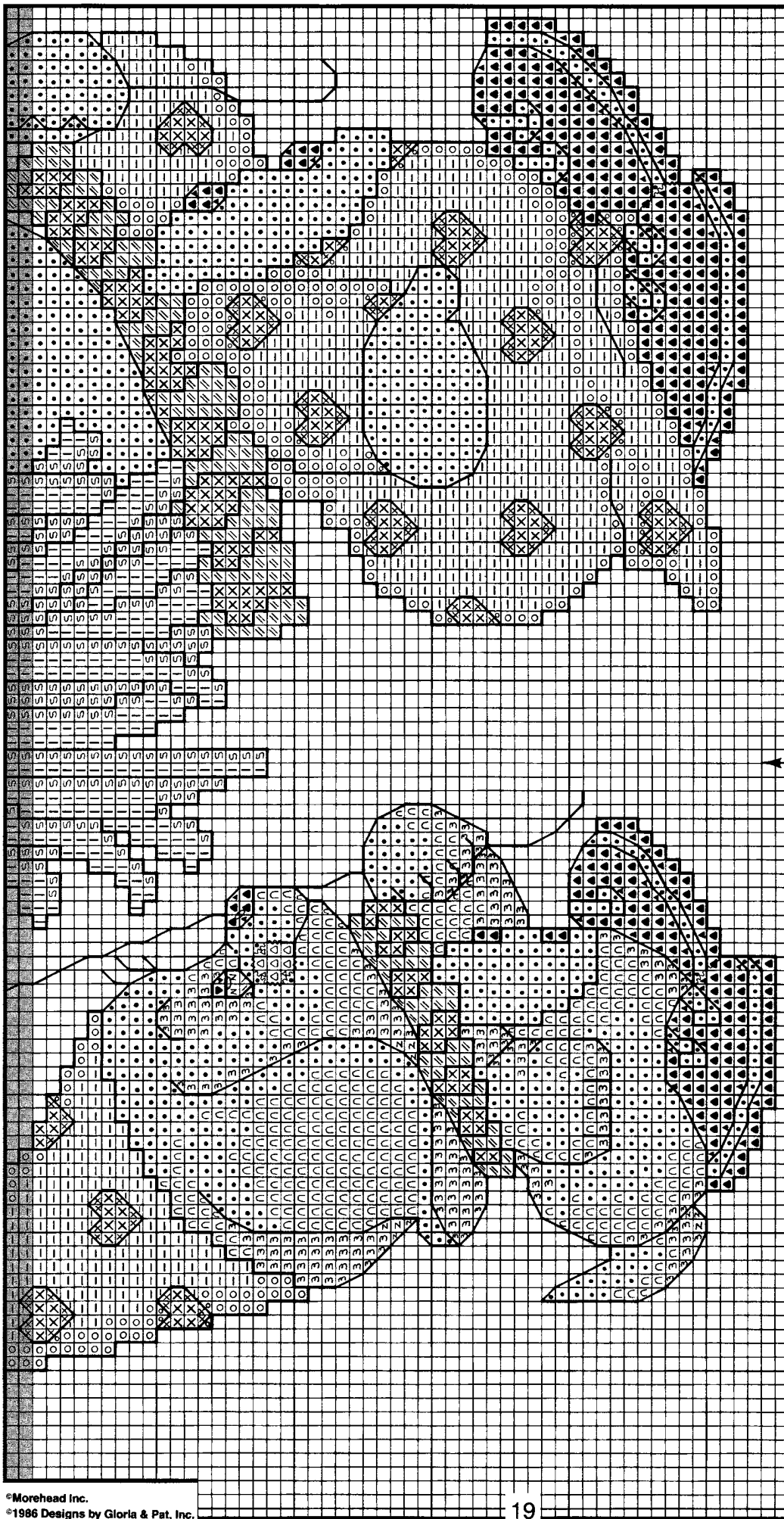


# Join My Parade



| DMC | Color              |
|-----|--------------------|
| •   | White              |
| ▲   | Black              |
| ▷   | Sportsman Flesh    |
| △   | Peach Flesh        |
| /   | Coral-Lt.          |
| ∖   | Coral-Med.         |
| x   | Coral-Dk.          |
| ∩   | Ecrú               |
| 3   | Beige Grey-Lt.     |
| 4   | Beige Grey-Med.    |
| 8   | Coffee Brown-Dk.   |
| ○   | Sky Blue           |
| ∩   | Antique Blue-Lt.   |
| N   | Antique Blue-Dk.   |
| -   | Blue-Ultra Vy. Lt. |
| I   | Orange Spice-Lt.   |
| S   | Orange Spice-Med.  |
| 6   | Beaver Grey-Med.   |
| 7   | Orange Spice-Dk.   |

Shaded area indicates last two rows stitched on previous page.



Add a little white stitch to eyes and noses where marked .

Backstitch balloons in color stitched.

Backstitch on cheeks in 353.

Backstitch clown's nose and small hearts in 349. (except when hearts are touching outside edges or other backstitch.)

Backstitch hair in 720.

Backstitch on shoes in 647.

Backstitch shoes, buttons and dog's nose in 310.

All other backstitch in 801.

**Design Area** ..... 125 x 108

**Size To Cut Fabric**

|                 |               |         |
|-----------------|---------------|---------|
| Hardanger ..... | 5 7/8 x 5     | 12 x 11 |
| Aida 18 .....   | 7 x 6 1/8     | 13 x 13 |
| Aida 14 .....   | 8 7/8 x 7 7/8 | 15 x 14 |
| Aida 11 .....   | 11 3/8 x 10   | 18 x 16 |

**Model**

Fabric: White Aida 14 ct.

Floss: Cross Stitch 2 strands

Backstitch 1 strand

**Note:** Read special instructions on page 1.

# My Purkin'


## Color

- White
- Black
- Yellow-Lt. Pale
- Yellow-Pale
- Pumpkin-Lt.
- Peach Flesh
- Coral-Med.
- Coral-Dk.
- Topaz-Vy. Lt.
- Topaz-Lt.
- Coffee Brown-Dk.
- Yellow Green-Lt.
- Yellow Green-Med.
- Antique Blue-Lt.
- Antique Blue-Dk.
- Pearl Grey
- Steel Grey-Lt.
- Orange Spice-Lt.
- Orange Spice-Med.
- Beaver Grey-Med.
- Orange Spice-Dk.

## DMC

- White
- 310
- 745
- 744
- 970
- 353
- 350
- 349
- 727
- 726
- 801
- 3348
- 3347
- 932
- 930
- 762
- 415
- 318
- 721
- 647
- 720

- ▲ ↘ X V = C - O ∇ \ L / N > + Z I S

Add a little white stitch to eyes and noses where marked .

Mouths—Make French Knots in 801.

Backstitch clown's nose in 349.

Backstitch on cheeks in 353.

Backstitch small hearts in 970. (except when touching outside edges or other backstitch.)

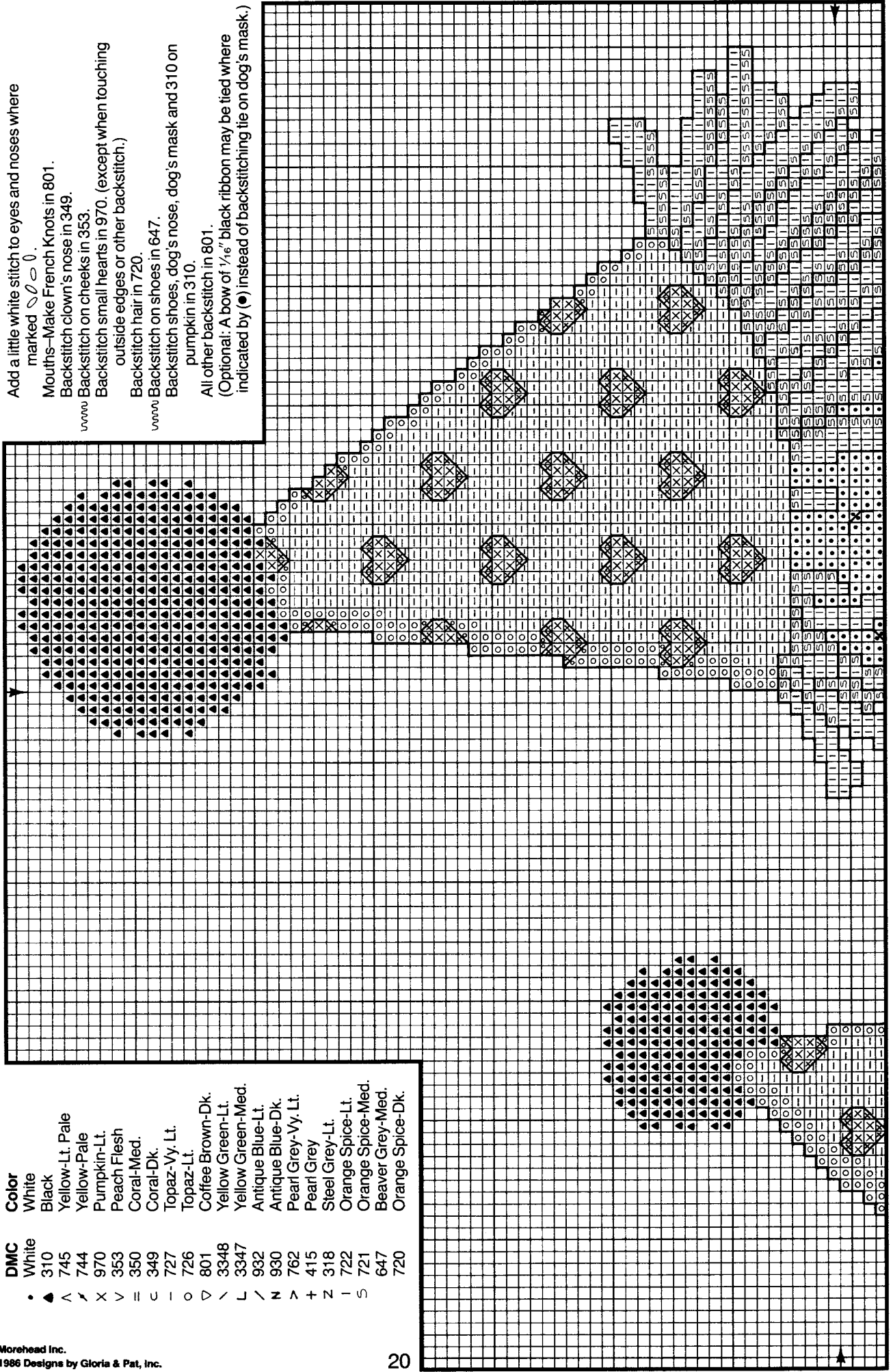
Backstitch hair in 720.

Backstitch on shoes in 647.

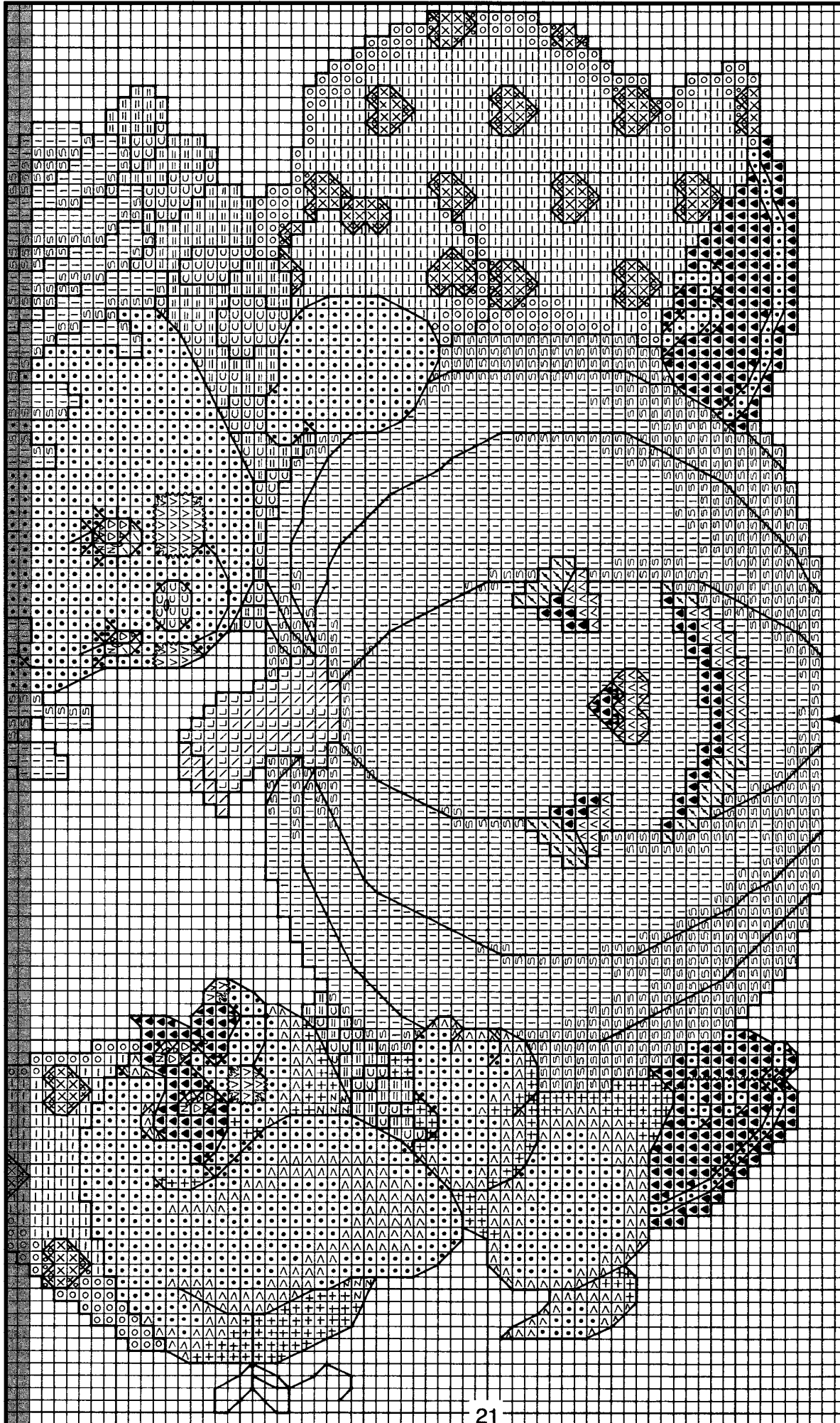
Backstitch shoes, dog's nose, dog's mask and 310 on pumpkin in 310.

All other backstitch in 801.

(Optional: A bow of 1/16" black ribbon may be tied where indicated by (●) instead of backstitching tie on dog's mask.)



Shaded area indicates last two rows stitched on previous page.



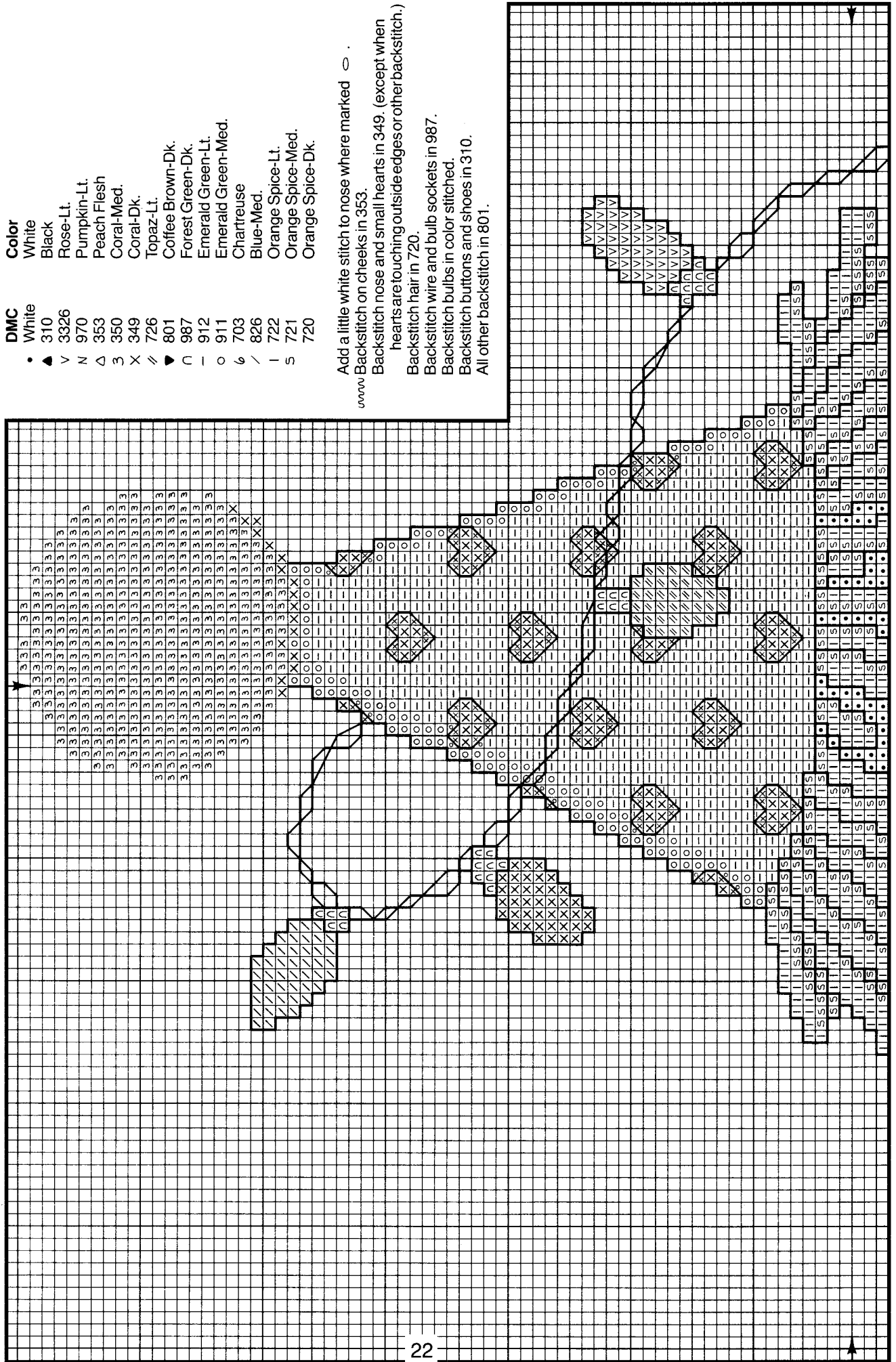
| Design Area | .....137 x 113  | Size To Cut Fabric |
|-------------|-----------------|--------------------|
| Hardanger   | 6 3/4 x 5 1/4   | 13 x 12            |
| Aida 18     | 7 3/4 x 6 3/8   | 14 x 13            |
| Aida 14     | 10 x 8 1/4      | 16 x 15            |
| Aida 11     | 12 3/4 x 10 1/2 | 19 x 17            |

**Model**  
 Fabric: White Aida 14 ct.  
 Floss: Cross Stitch 2 strands  
 Backstitch 1 strand

**Note:** Read special instructions on page 1.

# Let Your Little Lights Shine

©Morehead Inc.  
©1986 Designs by Gloria & Pat, Inc.



| DMC | Color              |
|-----|--------------------|
| •   | White              |
| ▲   | Black              |
| ∨   | Rose-Lt.           |
| ∩   | Pumpkin-Lt.        |
| △   | Peach Flesh        |
| ◊   | Coral-Med.         |
| ×   | Coral-Dk.          |
| ∕   | Topaz-Lt.          |
| ◀   | Coffee Brown-Dk.   |
| ∩   | Forest Green-Dk.   |
| ∩   | Emerald Green-Lt.  |
| ○   | Emerald Green-Med. |
| ⊕   | Chartreuse         |
| ∕   | Blue-Med.          |
| ∩   | Orange Spice-Lt.   |
| 5   | Orange Spice-Med.  |
| 720 | Orange Spice-Dk.   |

Add a little white stitch to nose where marked ○.  
 ~~~~~ Backstitch on cheeks in 353.  
 Backstitch nose and small hearts in 349. (except when hearts are touching outside edges or other backstitch.)  
 Backstitch hair in 720.  
 Backstitch wire and bulb sockets in 987.  
 Backstitch bulbs in color stitched.  
 Backstitch buttons and shoes in 310.  
 All other backstitch in 801.

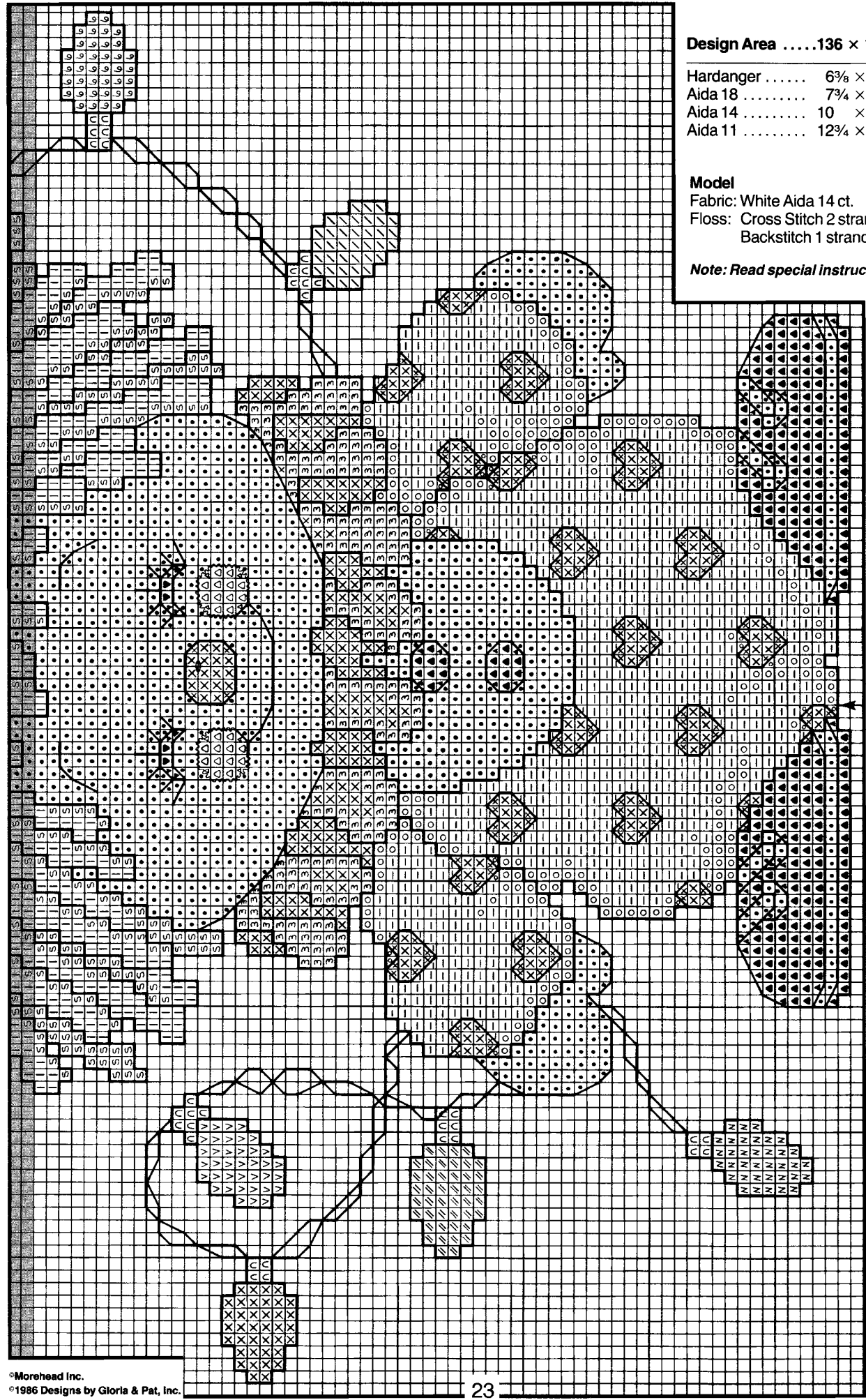
**Design Area** ..... 136 × 109      **Size To Cut Fabric**

|                 |   |         |
|-----------------|---|---------|
| Hardanger ..... | 6 <sup>3</sup> / <sub>8</sub> × 5                             | 13 × 11 |
| Aida 18 .....   | 7 <sup>3</sup> / <sub>4</sub> × 6 <sup>1</sup> / <sub>8</sub> | 14 × 13 |
| Aida 14 .....   | 10 × 7 <sup>1</sup> / <sub>8</sub>                            | 16 × 14 |
| Aida 11 .....   | 12 <sup>3</sup> / <sub>4</sub> × 10                           | 19 × 16 |

**Model**  
 Fabric: White Aida 14 ct.  
 Floss: Cross Stitch 2 strands  
 Backstitch 1 strand

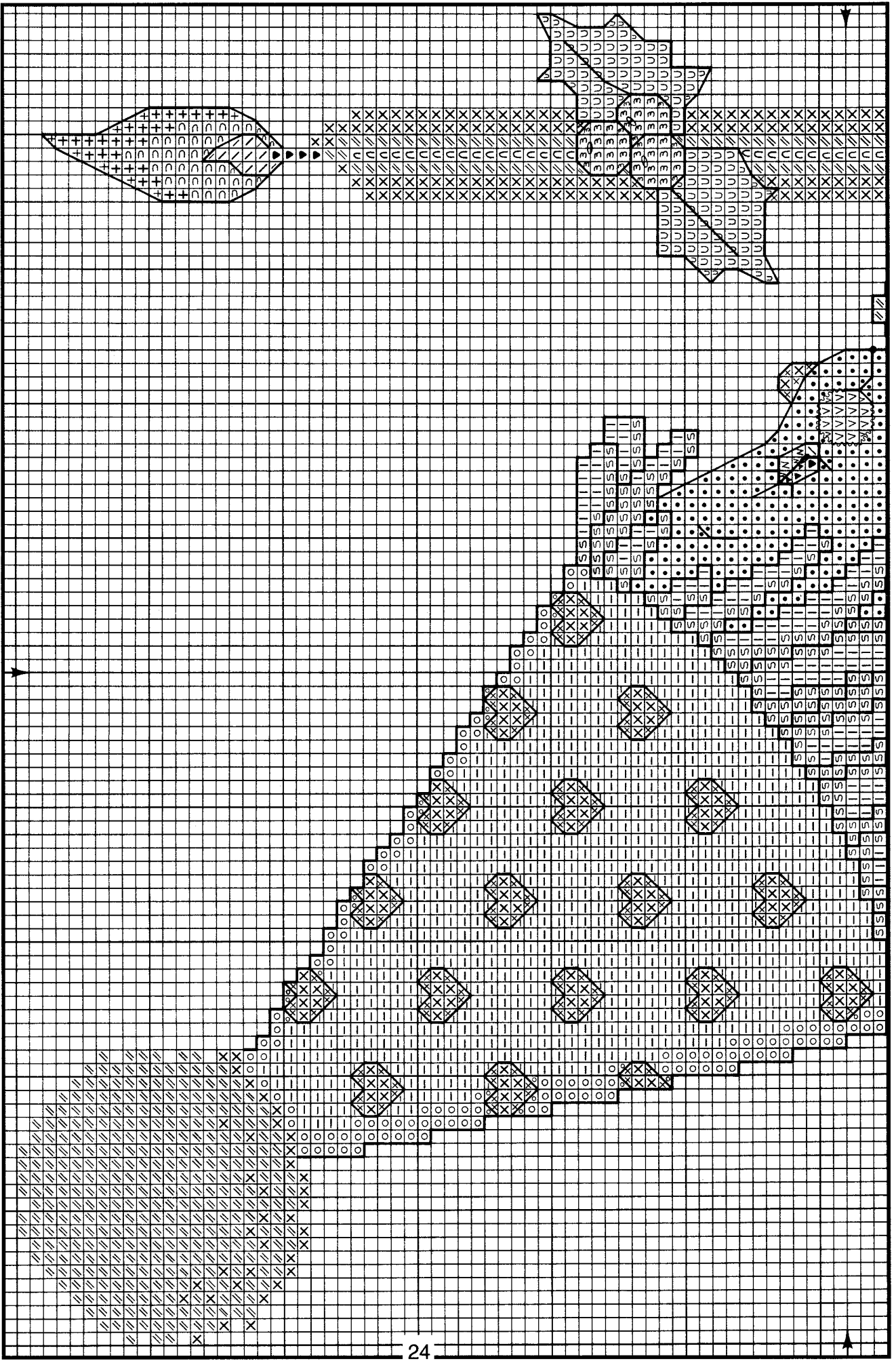
*Note: Read special instructions on page 1.*

Shaded area indicates last two rows stitched on previous page.

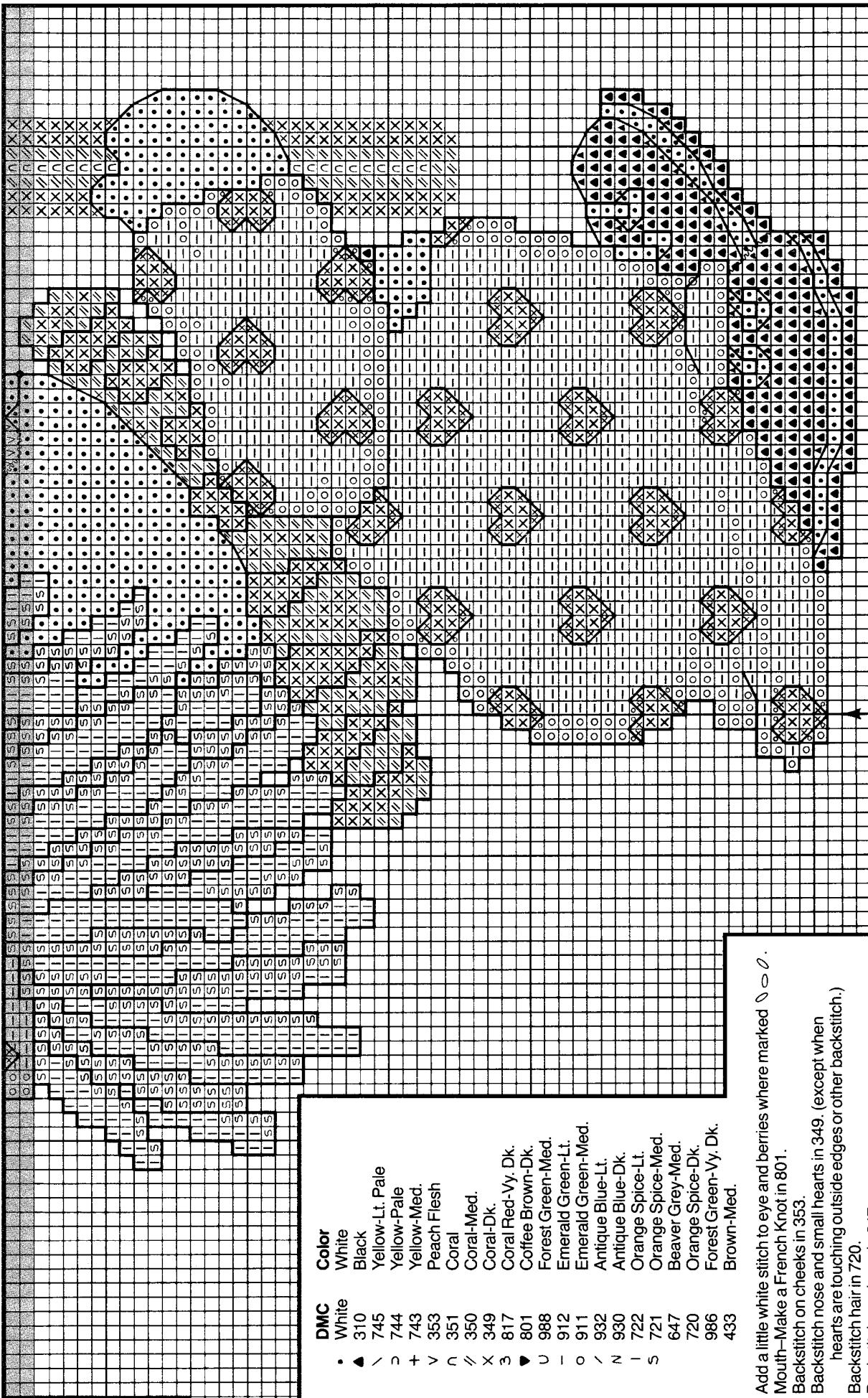


*May Your Christmas Be Bright*

©Morehead Inc.  
©1986 Designs by Gloria & Pat, Inc.



Shaded area indicates last two rows stitched on previous page.



©Morehead Inc.  
©1986 Designs by Gloria & Pat, Inc.

**DMC**

- White
- ▲ 310 Black
- ∩ 745 Yellow-Lt. Pale
- ∪ 744 Yellow-Pale
- + 743 Yellow-Med.
- ∨ 353 Peach Flesh
- ∩ 351 Coral
- ∩ 350 Coral-Med.
- ∩ 349 Coral-Dk.
- 3 817 Coral Red-Vy. Dk.
- ▼ 801 Coffee Brown-Dk.
- U 988 Forest Green-Med.
- 912 Emerald Green-Lt.
- o 911 Emerald Green-Med.
- / 932 Antique Blue-Lt.
- N 930 Antique Blue-Dk.
- I 722 Orange Spice-Lt.
- S 721 Orange Spice-Med.
- 647 Beaver Grey-Med.
- 720 Forest Green-Vy. Dk.
- 986 Brown-Med.
- 433

Add a little white stitch to eye and berries where marked  $\circ \ominus \emptyset$ .

Mouth—Make a French Knot in 801.

Backstitch on cheeks in 353.

Backstitch nose and small hearts in 349, (except when hearts are touching outside edges or other backstitch.)

Backstitch hair in 720.

Backstitch on shoes in 647.

Backstitch shoes and button in 310.

Backstitch berries in 433.

Backstitch holly leaves and veins in 986.

Backstitch outside edge of flame in 743.

Backstitch inside flame in 745.

All other backstitch in 801.

**Design Area** ..... 123 x 99

|           | Size To          | Cut Fabric |
|-----------|------------------|------------|
| Hardanger | 5 3/4" x 4 1/2"  | 12 x 11    |
| Aida 18   | 7" x 5 1/2"      | 13 x 12    |
| Aida 14   | 8 7/8" x 7 1/8"  | 15 x 14    |
| Aida 11   | 11 1/8" x 9 1/8" | 18 x 16    |

**Model**

Fabric: White Aida 14 ct.  
Floss: Cross Stitch 2 strands  
Backstitch 1 strand

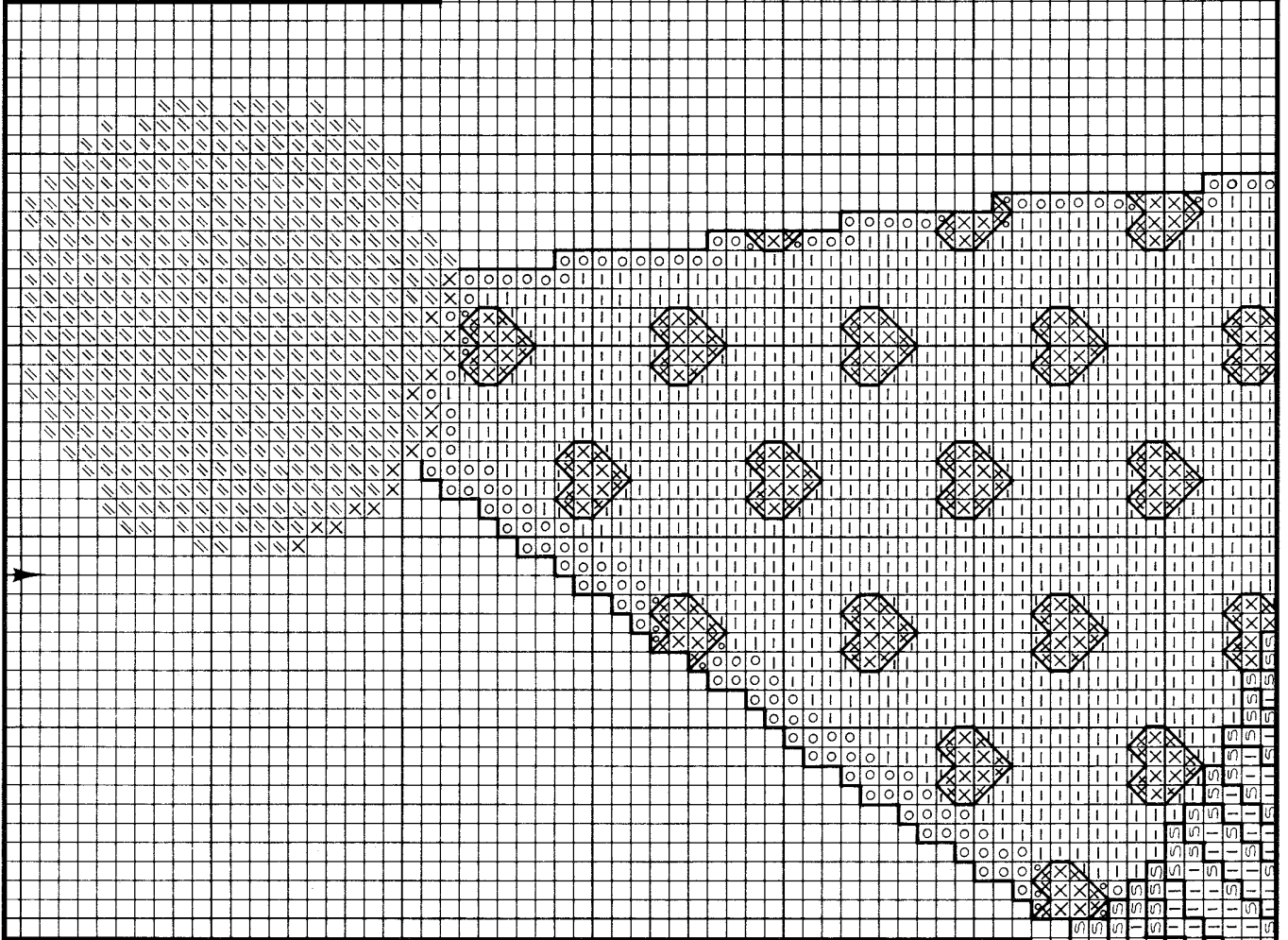
**Note:** Read special instructions on page 1.

# Christmas Is Comin'

## Model

Fabric: White Aida 14 ct.  
 Floss: Cross Stitch 2 strands  
 Backstitch 1 strand

Note: Read special instructions on page 1.



- DMC**
- White
  - ▲ 310
  - ▼ 353
  - ∕ 350
  - × 349
  - 817
  - 3 666
  - ▼ 801
  - ∧ 988
  - 912
  - 911
  - ∕ 932
  - N 930
  - I 722
  - S 721
  - 647
  - 720
  - 986
- Color**
- White
  - Black
  - Peach Flesh
  - Coral-Med.
  - Coral-Dk.
  - Coral-Vy. Dk.
  - Christmas Red-Bright
  - Coffee Brown-Dk.
  - Forest Green-Med.
  - Emerald Green-Lt.
  - Emerald Green-Med.
  - Antique Blue-Lt.
  - Antique Blue-Dk.
  - Orange Spice-Lt.
  - Orange Spice-Med.
  - Beaver Grey-Med.
  - Orange Spice-Dk.
  - Forest Green-Dk.

Add a little white stitch to eyes, nose, and berries where marked  $\ominus$ .

Mouth—Make a French Knot in 801.

Backstitch on cheeks in 353.

Backstitch nose and small hearts in 349. (except when hearts are touching outside edges or other backstitch.)

Backstitch hair in 720.

Backstitch on shoes in 647.

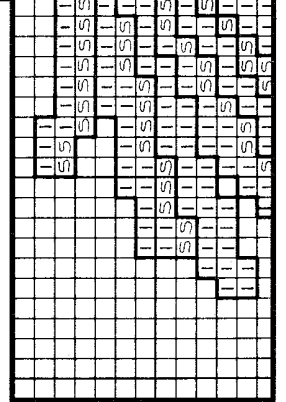
Backstitch shoes in 310.

Backstitch berries and bow in 817.

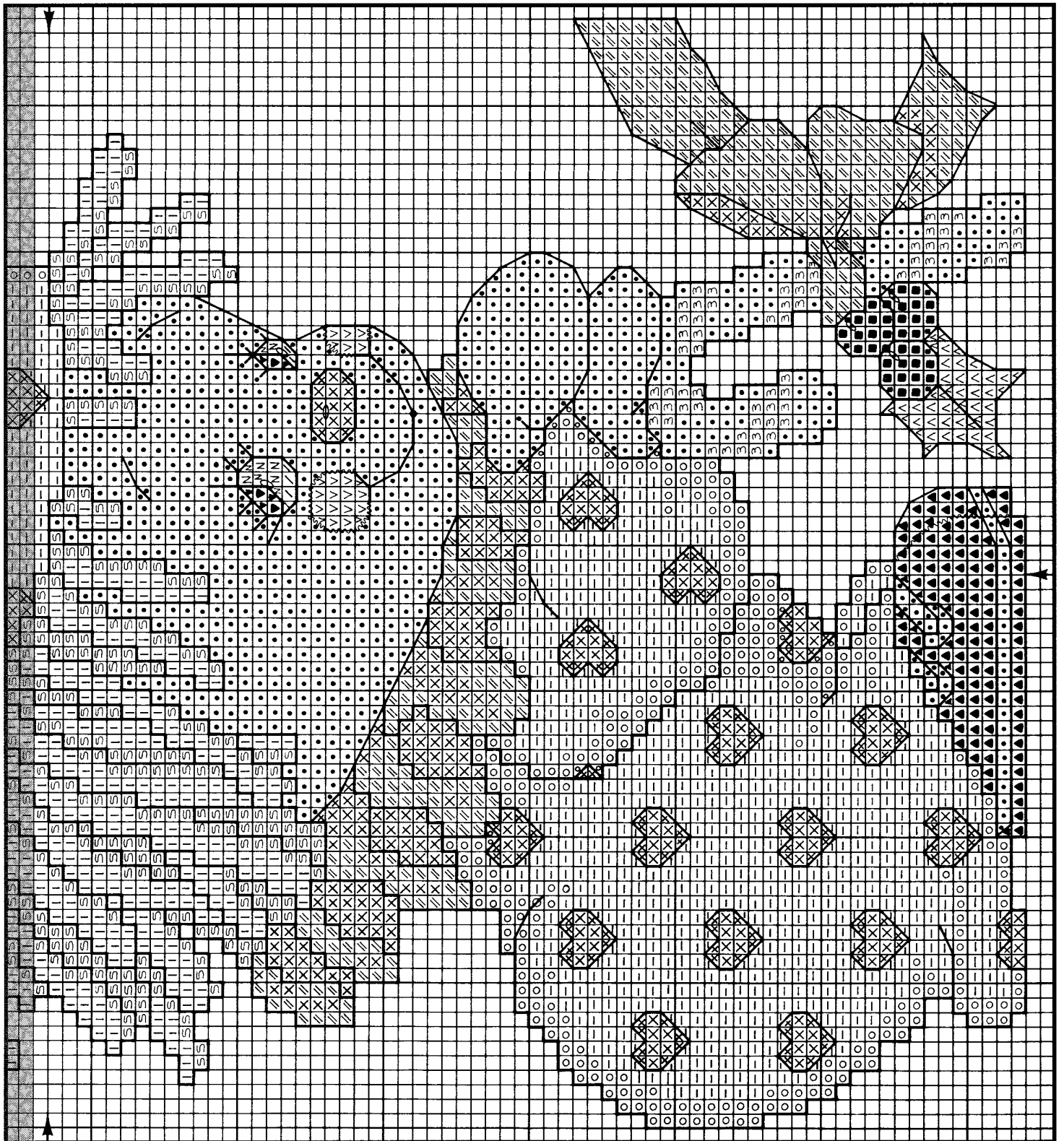
Backstitch holly leaf and vein in 986.

All other backstitch in 801.

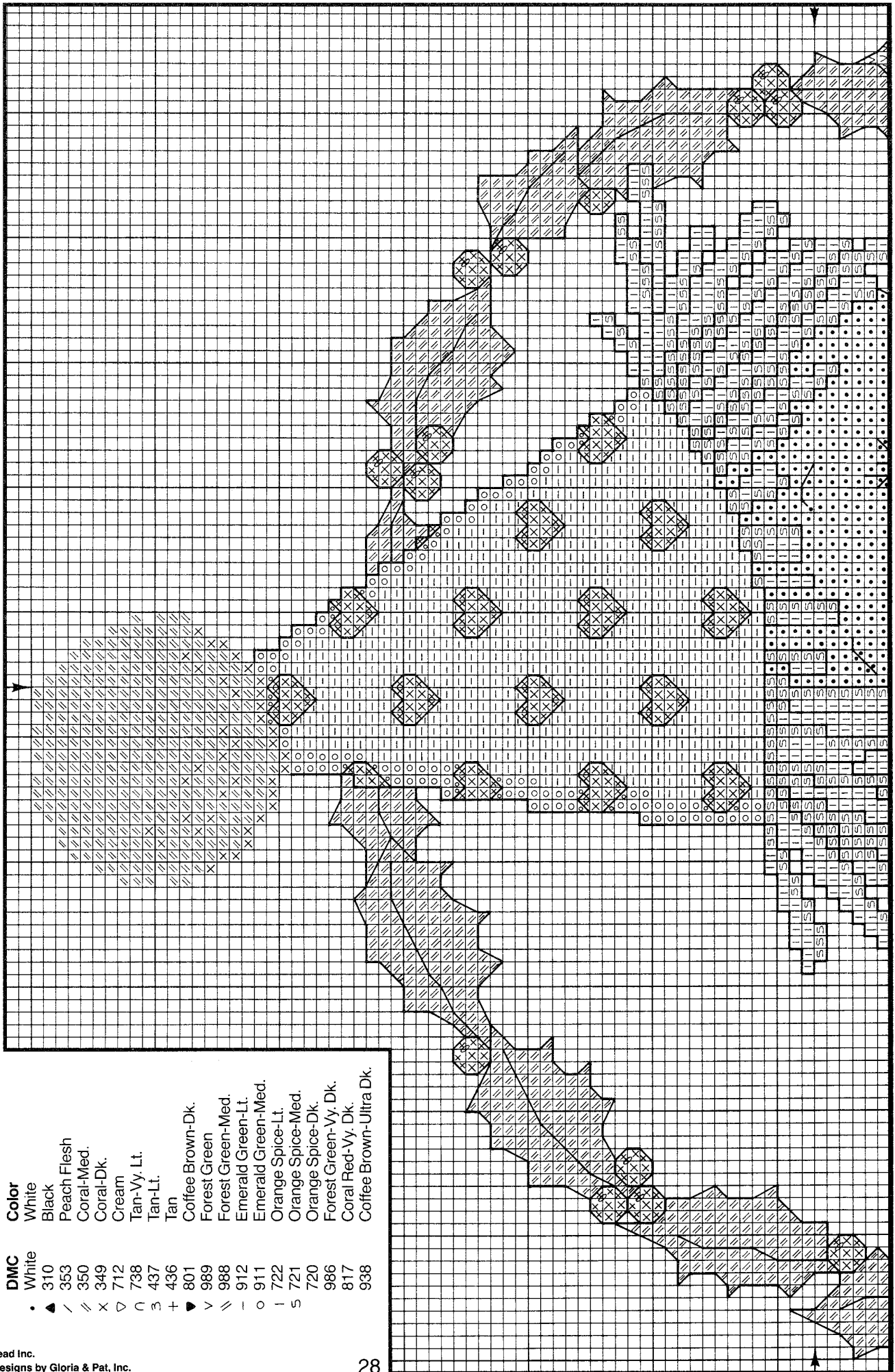
| Design Area | .....134 x 76 | Size To Cut Fabric |
|-------------|---------------|--------------------|
| Hardanger   | .....         | 6 1/8 x 3 3/8      |
| Aida 18     | .....         | 7 1/2 x 4 1/2      |
| Aida 14     | .....         | 9 7/8 x 5 3/4      |
| Aida 11     | .....         | 12 1/4 x 7 1/4     |
|             |               | 13 x 10            |
|             |               | 14 x 11            |
|             |               | 16 x 12            |
|             |               | 19 x 14            |



Shaded area indicates last two rows stitched on previous page.



*Have A Beary Merry Christmas*



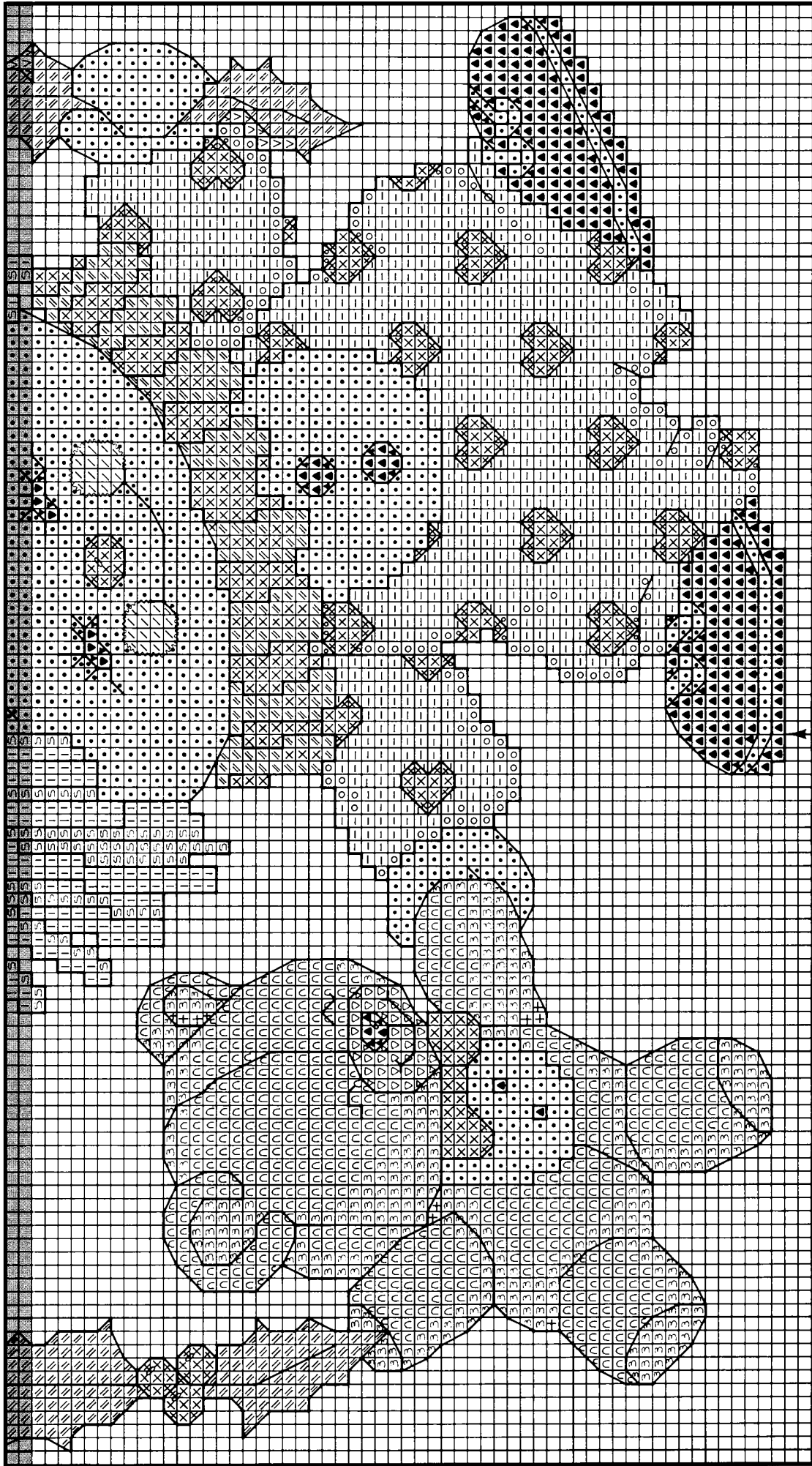
**Color**

- White
- Black
- Peach Flesh
- Coral-Med.
- Coral-Dk.
- Cream
- Tan-Vy Lt.
- Tan-Lt.
- Tan
- Coffee Brown-Dk.
- Forest Green
- Forest Green-Med.
- Emerald Green-Lt.
- Emerald Green-Med.
- Orange Spice-Lt.
- Orange Spice-Med.
- Orange Spice-Dk.
- Forest Green-Vy. Dk.
- Coral Red-Vy. Dk.
- Coffee Brown-Ultra Dk.

**DMC**

- White
- 310
- 353
- 350
- 349
- 712
- 738
- 437
- 436
- 801
- 989
- 988
- 912
- 911
- 722
- 5 721
- 720
- 986
- 817
- 938

Shaded area indicates last two rows stitched on previous page.



~~~~~  
 Add a little white stitch to noses and berries where marked  $\emptyset$ .  
 Backstitch on cheeks in 353.  
 Backstitch clown's nose and small hearts in 349. (except when hearts are touching outside edges or other backstitch.)  
 Backstitch hair in 720.  
 Backstitch berries in 817.  
 Backstitch holly leaves and veins in 986.  
 Backstitch buttons, bear's nose and shoes in 310.  
 Backstitch bear's eyes in 938.  
 All other backstitch in 801.

Design Area	.....126 x 108	Size To Cut Fabric
Hardanger	..... 5 $\frac{7}{8}$ x 5	12 x 11
Aida 18	..... 7 $\frac{1}{4}$ x 6 $\frac{1}{8}$	14 x 13
Aida 14	..... 9 $\frac{1}{4}$ x 7 $\frac{7}{8}$	16 x 14
Aida 11	..... 11 $\frac{7}{8}$ x 10	18 x 16

**Model**  
 Fabric: White Aida 14 ct.  
 Floss: Cross Stitch 2 strands  
 Backstitch 1 strand

**Note:** Read special instructions on page 1.



7 *Because You Count™... We Care About Quality*

Designs by Gloria & Pat, Inc. • P.O. Box 2318 • Sumter, S.C. 29151-2318