

Fantasy 4

⊗	DMC 986 Very Dark Forest Green
◻	DMC 500 Very Dark Blue Green
◉	DMC 838 Very Dark Beige Brown
+	DMC 935 Dark Avocado Green
■	DMC 3799 Very Dark Pewter Gray
◼	DMC 3781 Dark Mocha Brown
●	DMC 924 Very Dark Gray Green
⊗	DMC 3021 Very Dark Brown Gray
◊	DMC 469 Avocado Green
◼	DMC 645 Very Dark Beaver Gray
⌂	DMC 646 Dark Beaver Gray
•	DMC 703 Chartreuse
⊕	DMC 3346 Hunter Green
◻	DMC 931 Medium Antique Blue
◼	DMC 420 Dark Hazelnut Brown
↑	DMC 610 Dark Drab Brown
△	DMC 3790 Ultra Dark Beige Gray
⊗	DMC 3726 Dark Antique Mauve
▶	DMC 907 Light Parrot Green
⊗	DMC 3012 Medium Khaki Green
⊥	DMC 3052 Medium Green Gray
▼	DMC 320 Medium Pistachio Green
⊗	DMC 704 Bright Chartreuse
◼	DMC 612 Light Drab Brown
◼	DMC 647 Medium Beaver Gray
◻	DMC 640 Very Dark Beige Gray
◻	DMC 597 Turquoise
→	DMC 522 Fern Green
⊕	DMC 642 Dark Beige Gray
◻	DMC 932 Light Antique Blue
↘	DMC 368 Light Pistachio Green
	DMC 813 Light Blue
≡	DMC 3782 Light Mocha Brown
⊙	DMC 3023 Light Brown Gray
~	DMC 966 Medium Baby Green
↓	DMC 503 Medium Blue Green
≡	DMC 3024 Very Light Brown Gray
⊗	DMC 739 Ultra Very Light Tan
⚪	DMC 3865 Winter White

* To work out the size of the finished article, take the number of stitches and divide it by the count of your fabric (e.g 14,16,18 count aida etc) to get the size in inches. Times it by 2.5 to get centimetres.

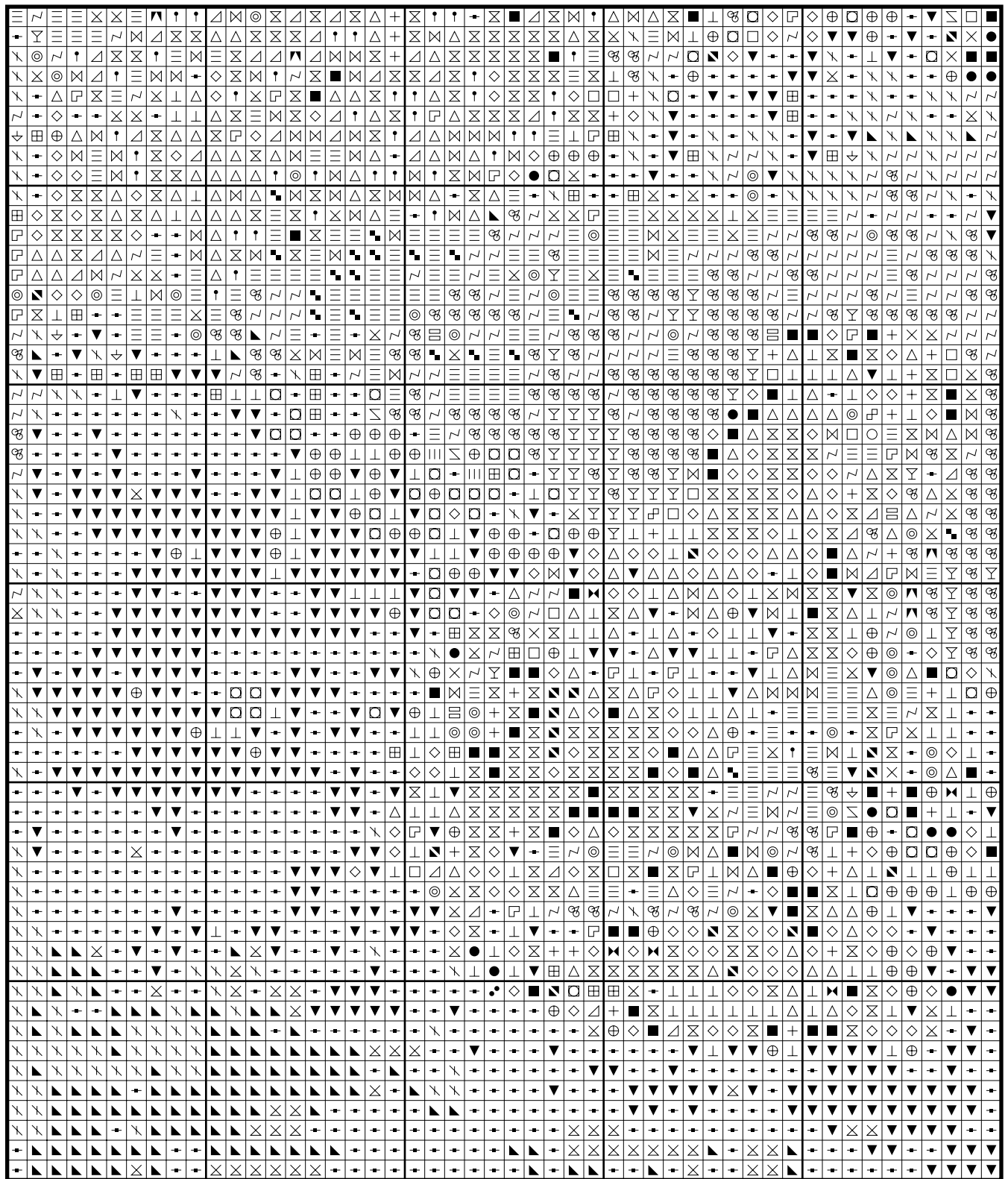
* PLEASE NOTE: Our patterns are printed in a grid showing 10 x 10 stitches in each box. You may notice that the pages that run vertical have a maximum number of 9 rows at the top or bottom of a page. You are not missing a row or rows of stitches, this is the way our patterns print. It allows us to have larger print for your symbols.

* You should begin at the centre of the pattern which has been marked by a circle for you. To find the centre of the pattern it is just a matter of counting the vertical and horizontal stitches and divide them by half. Where the two points meet that is the centre.

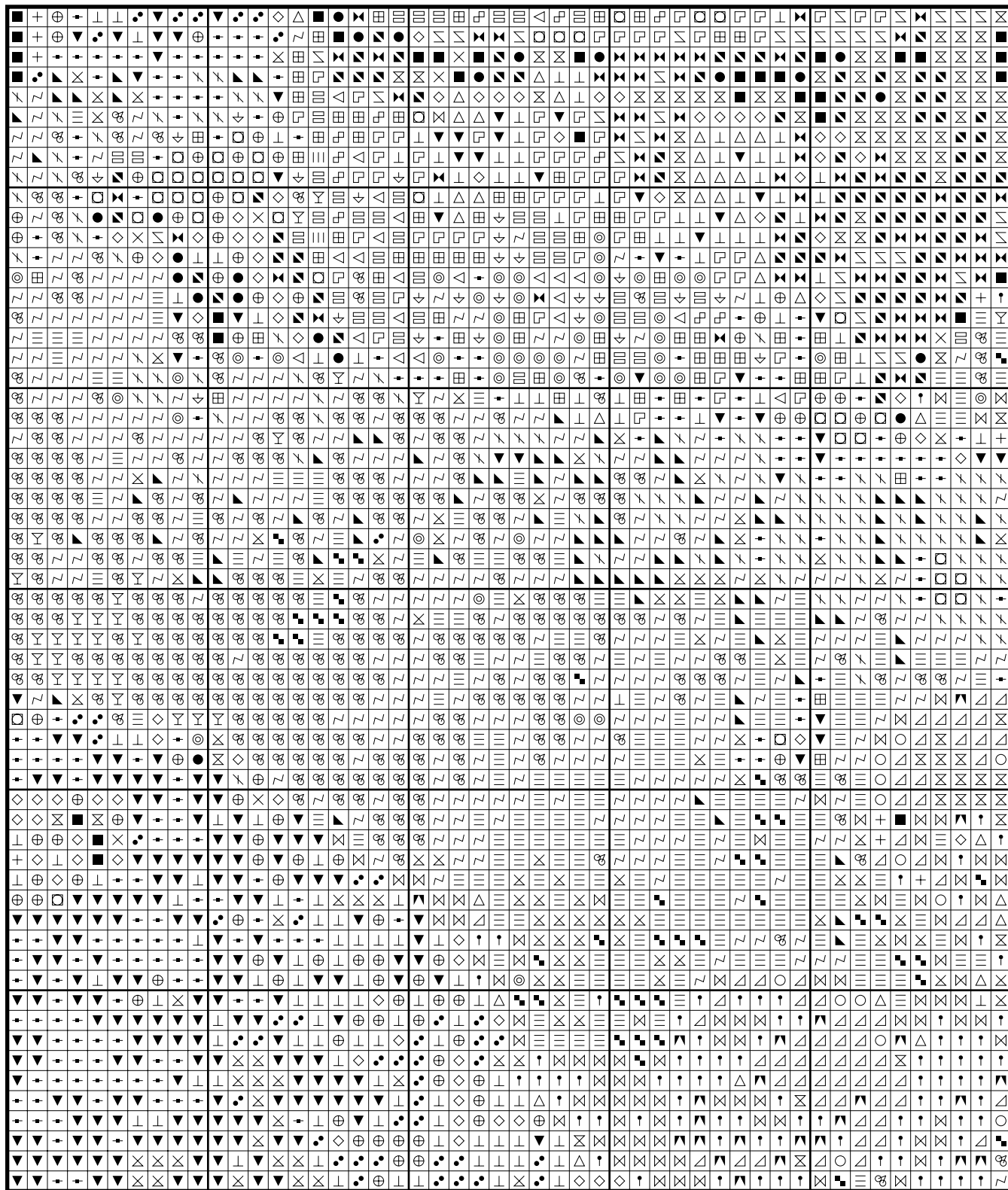
* Pattern is for personal use only and is not to be sold, copied or redistributed in any form. Copyright of Artec Cross Stitch.

* 150 stitches wide by 230 stitches high, 39 colours used

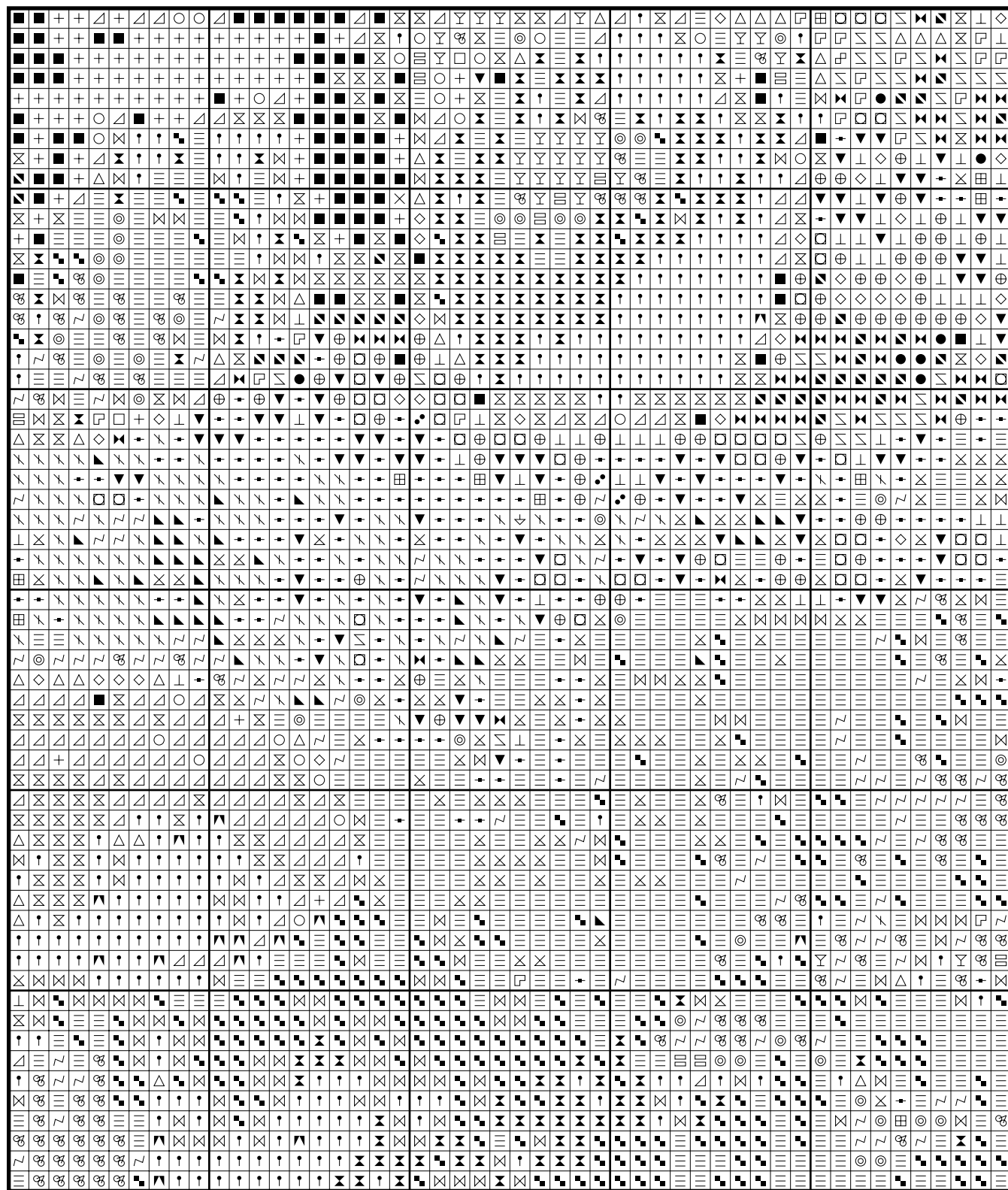
Fantasy 4



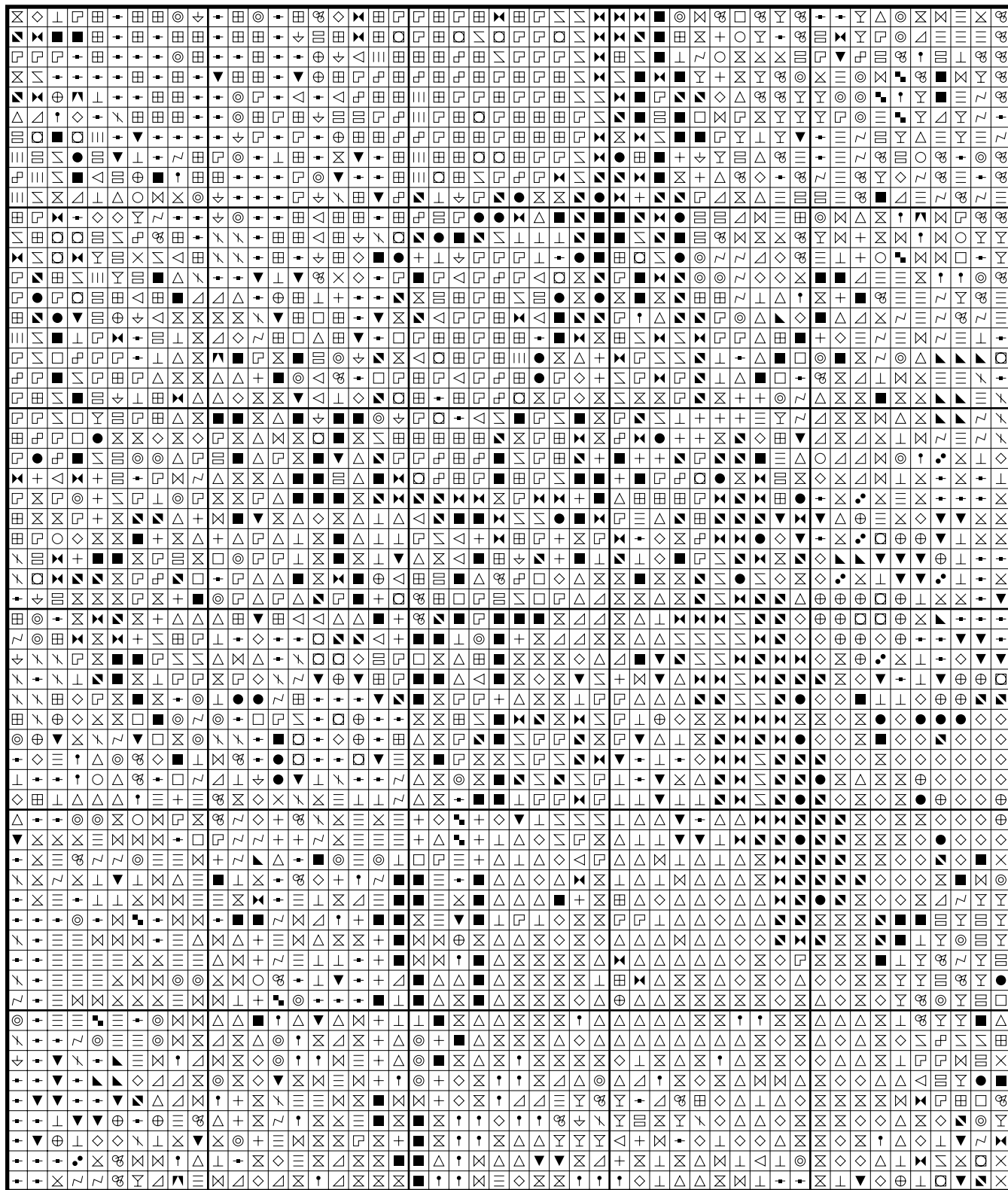
Fantasy 4



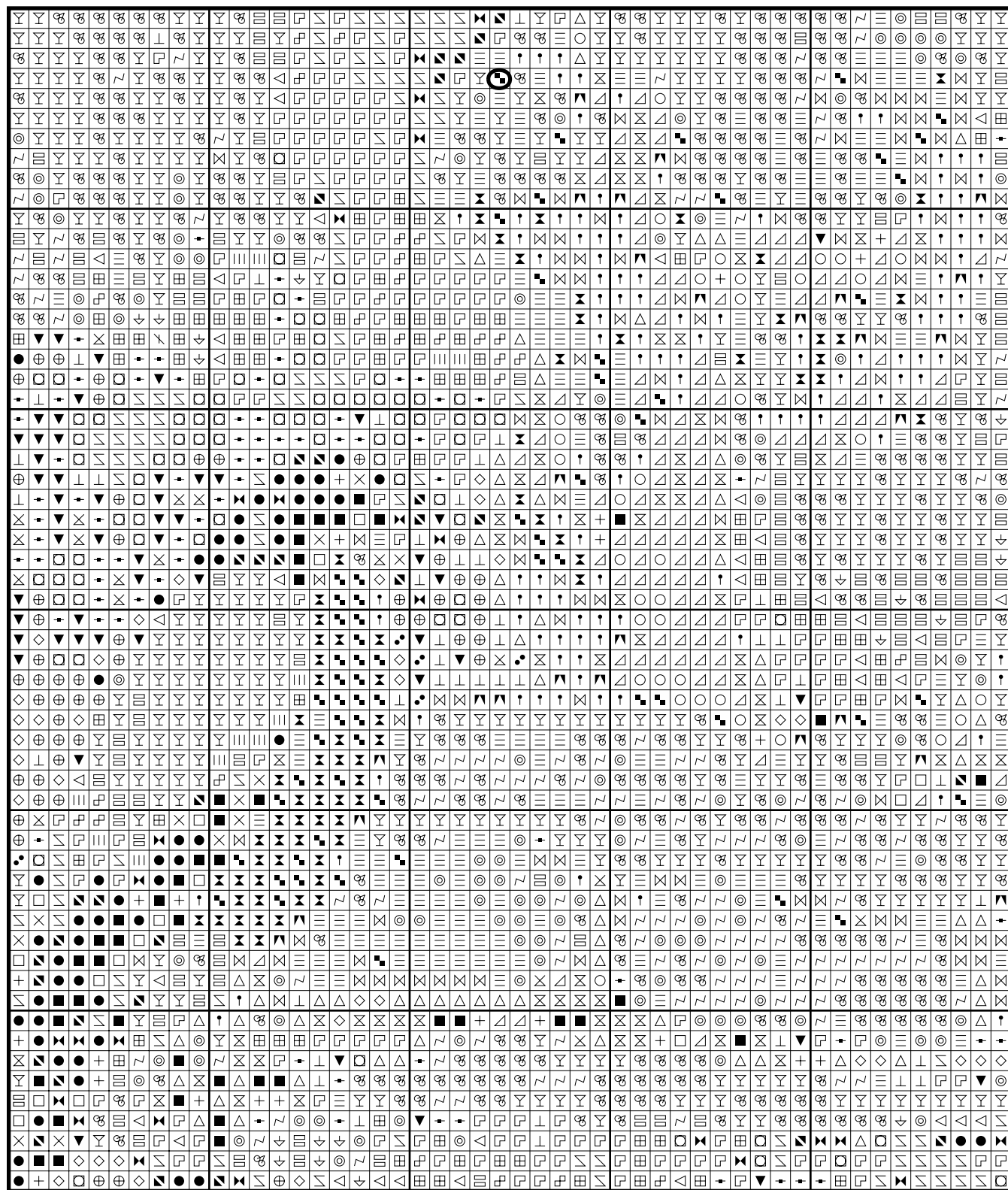
Fantasy 4



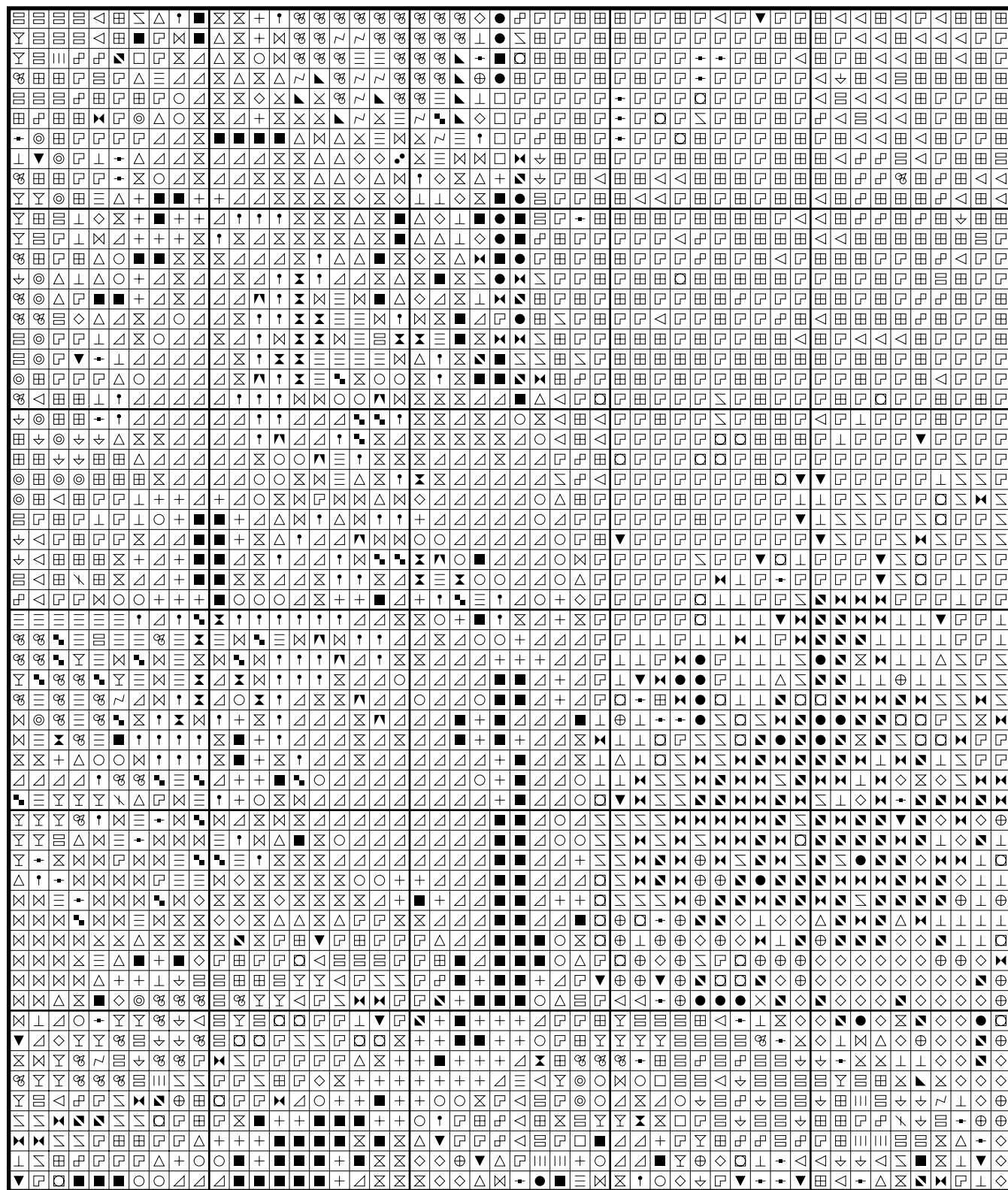
Fantasy 4



Fantasy 4



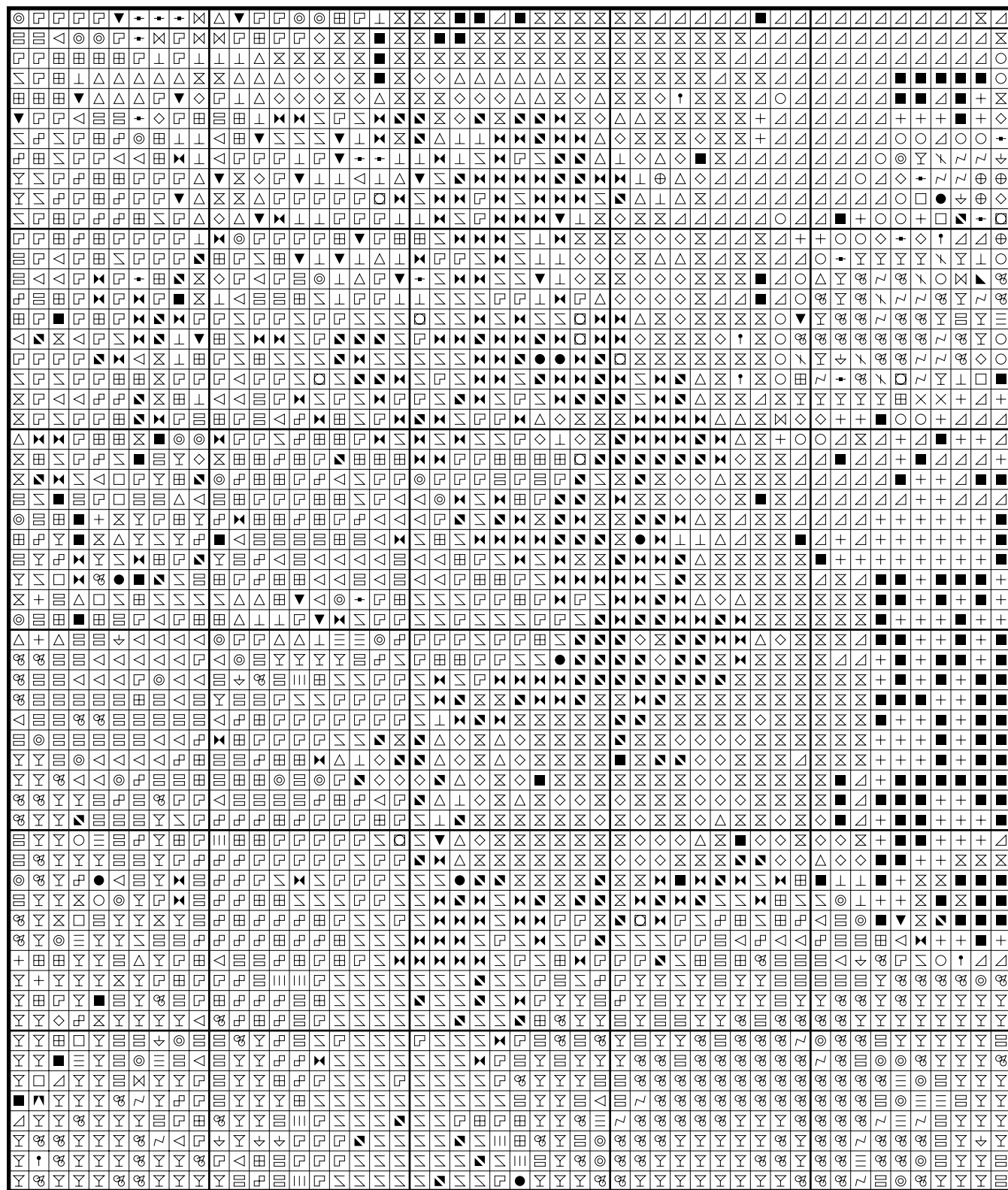
Fantasy 4



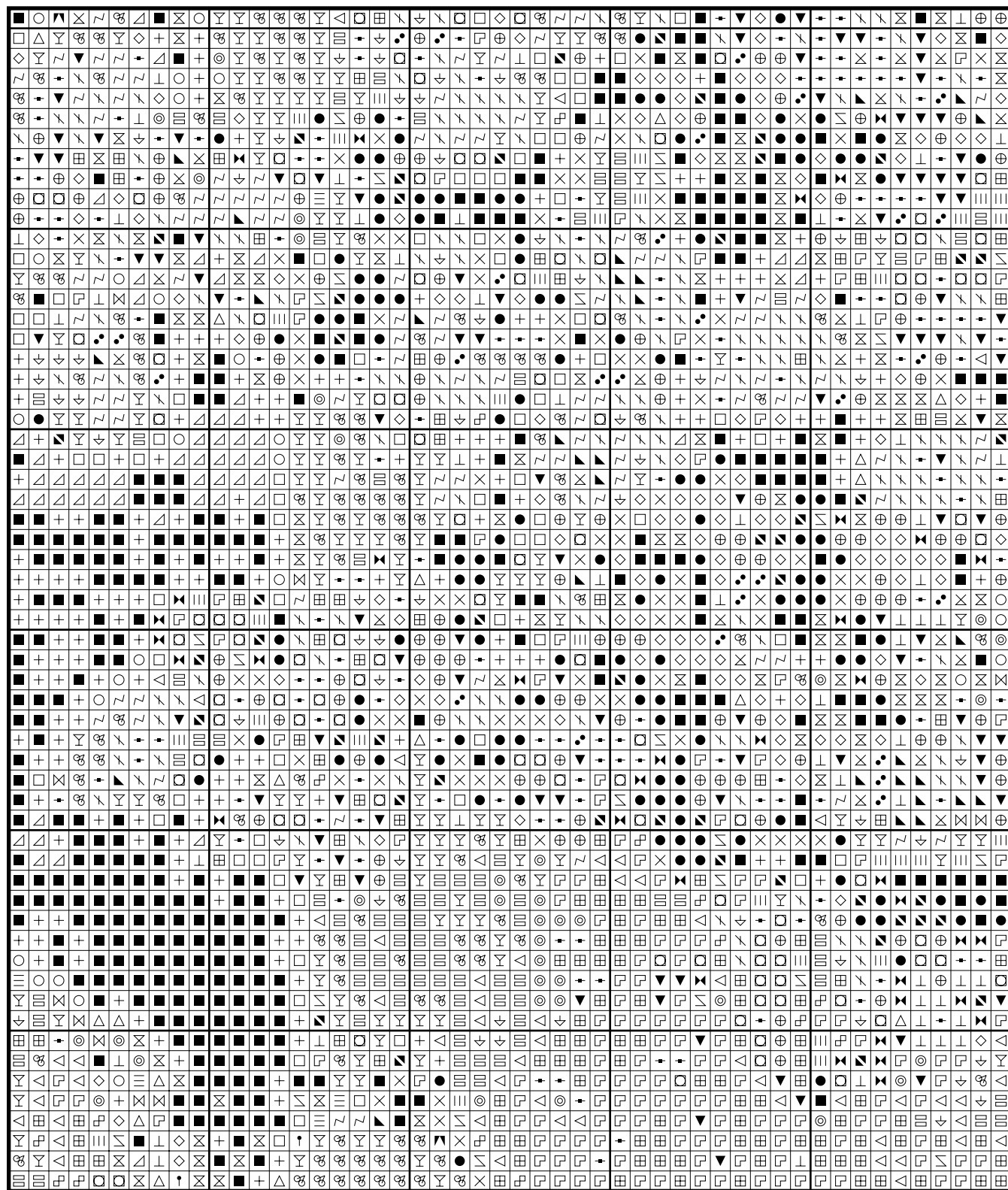
Fantasy 4



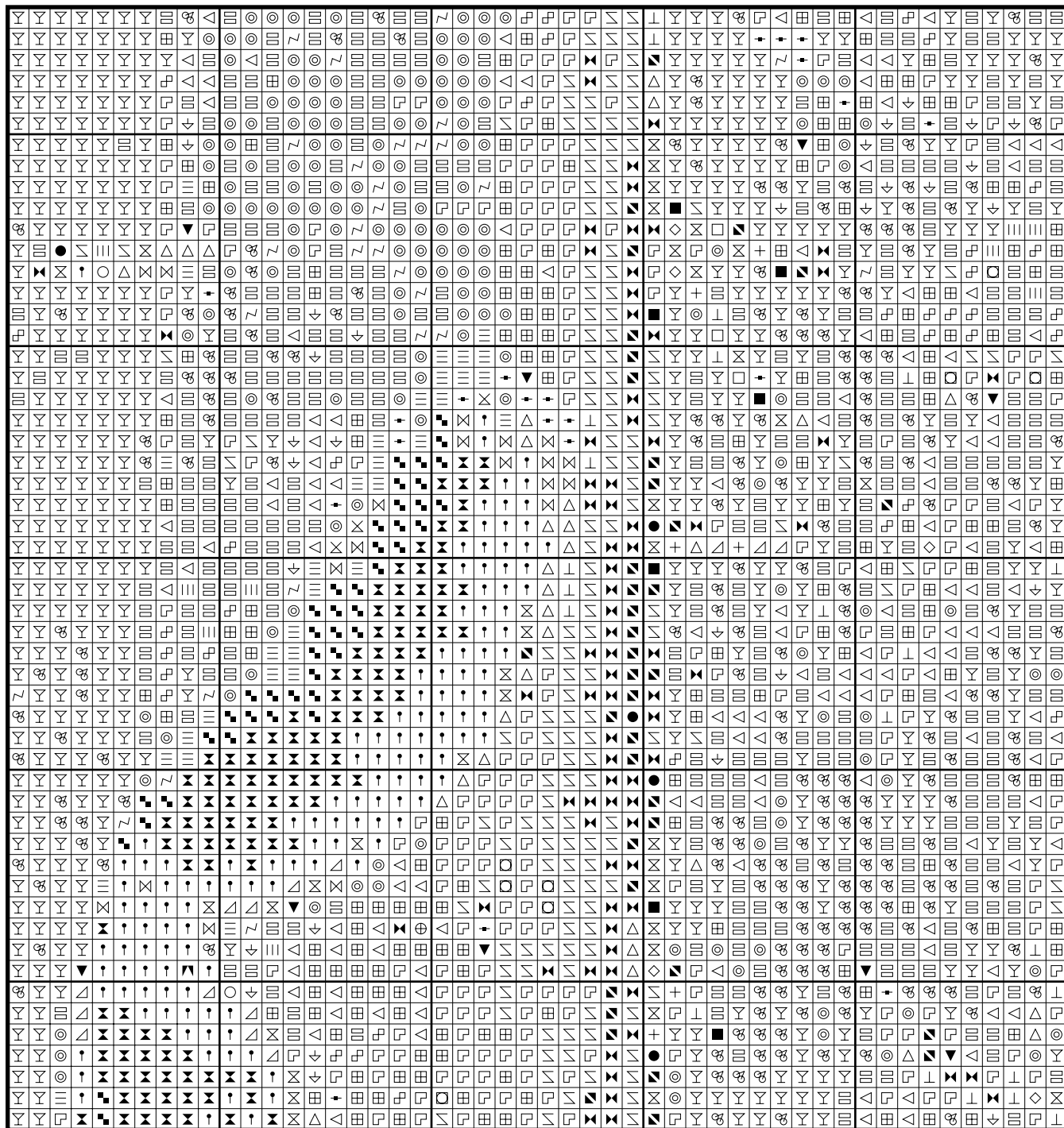
Fantasy 4



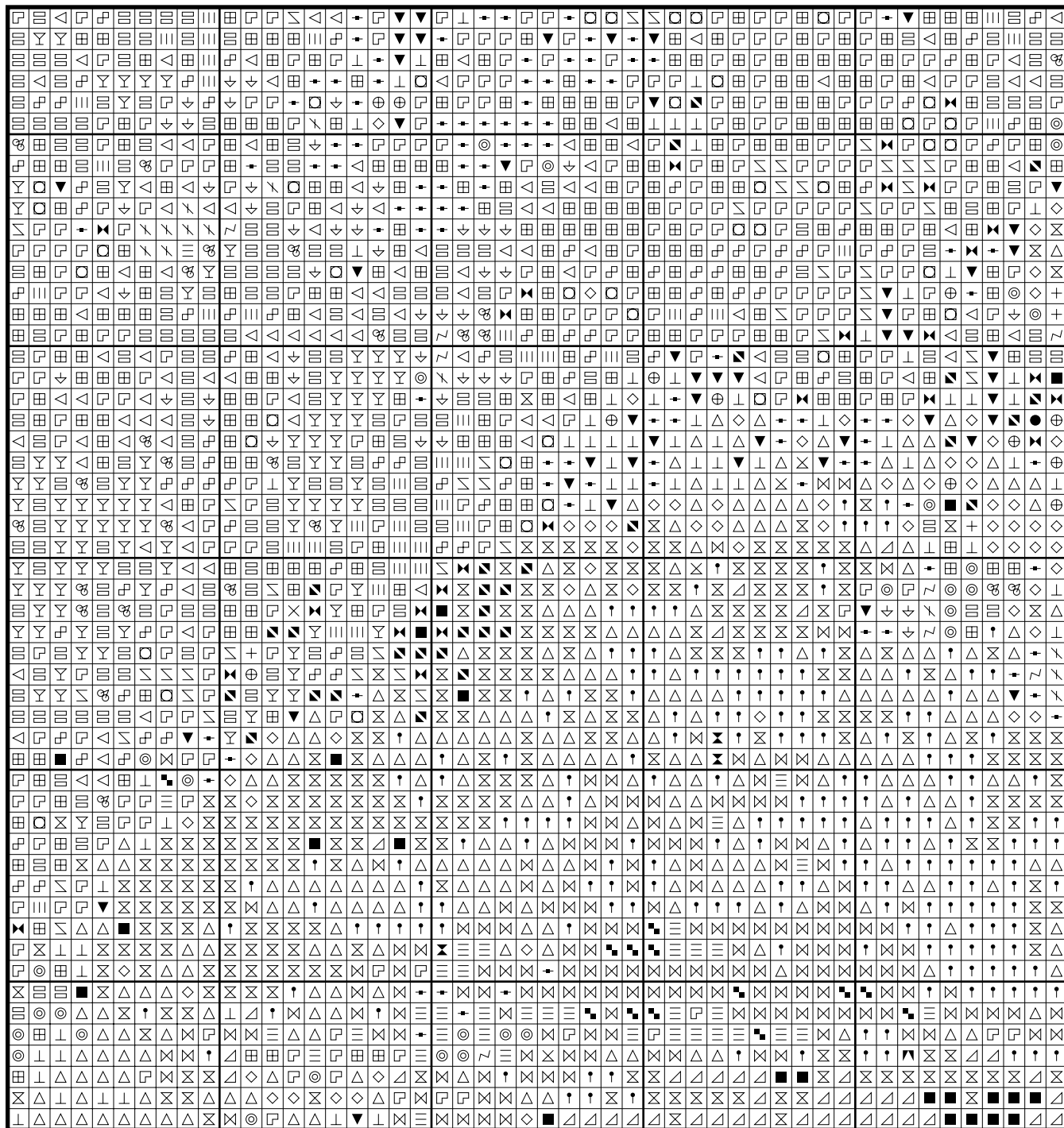
Fantasy 4



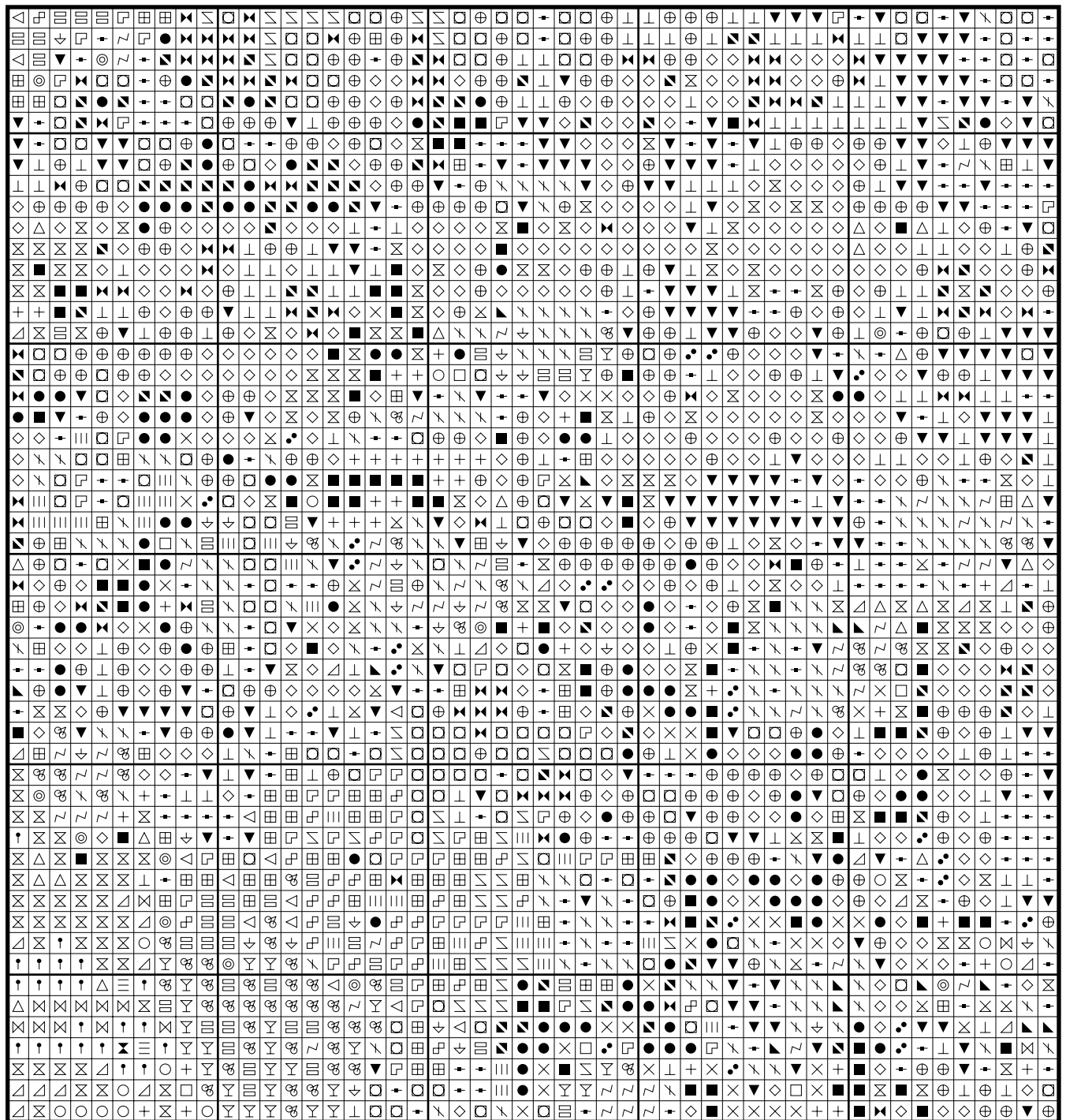
Fantasy 4



Fantasy 4



Fantasy 4



The picture used to create this pattern is from a collection of original pre - 1900 prints which I have been granted permission to use by Anne Shelton. Her website can be found at <http://www.stamphistory.net/allpics/>.

Color distribution - fantasy4

DMC 986 Very Dark Forest Green: 169 stitches
DMC 500 Very Dark Blue Green: 196 stitches
DMC 838 Very Dark Beige Brown: 247 stitches
DMC 935 Dark Avocado Green: 665 stitches
DMC 3799 Very Dark Pewter Gray: 1128 stitches
DMC 3781 Dark Mocha Brown: 973 stitches
DMC 924 Very Dark Gray Green: 451 stitches
DMC 3021 Very Dark Brown Gray: 1916 stitches
DMC 469 Avocado Green: 1228 stitches
DMC 645 Very Dark Beaver Gray: 826 stitches
DMC 646 Dark Beaver Gray: 831 stitches
DMC 703 Chartreuse: 116 stitches
DMC 3346 Hunter Green: 763 stitches
DMC 931 Medium Antique Blue: 961 stitches
DMC 420 Dark Hazelnut Brown: 105 stitches
DMC 610 Dark Drab Brown: 1089 stitches
DMC 3790 Ultra Dark Beige Gray: 1046 stitches
DMC 3726 Dark Antique Mauve: 521 stitches
DMC 907 Light Parrot Green: 310 stitches
DMC 3012 Medium Khaki Green: 852 stitches
DMC 3052 Medium Green Gray: 980 stitches
DMC 320 Medium Pistachio Green: 1235 stitches
DMC 704 Bright Chartreuse: 476 stitches
DMC 612 Light Drab Brown: 507 stitches
DMC 647 Medium Beaver Gray: 651 stitches
DMC 640 Very Dark Beige Gray: 2083 stitches
DMC 597 Turquoise: 660 stitches
DMC 522 Fern Green: 1845 stitches
DMC 642 Dark Beige Gray: 1633 stitches
DMC 932 Light Antique Blue: 380 stitches
DMC 368 Light Pistachio Green: 710 stitches
DMC 813 Light Blue: 171 stitches
DMC 3782 Light Mocha Brown: 1347 stitches
DMC 3023 Light Brown Gray: 796 stitches
DMC 966 Medium Baby Green: 1015 stitches
DMC 503 Medium Blue Green: 332 stitches
DMC 3024 Very Light Brown Gray: 1330 stitches
DMC 739 Ultra Very Light Tan: 1783 stitches
DMC 3865 Winter White: 2173 stitches

* Generally 30 stitches will use 1 metre of DMC floss.

PATTERN LAYOUT		
11	12	13
8	9	10
5	6	7
2	3	4

