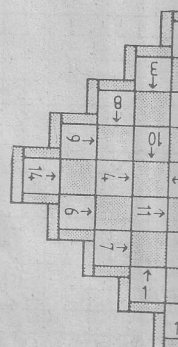


Zeichenerklärung

- = dunkelgrün
- = hellbeige
- = weiß (Fb.)
- ◻ = dkl. beige
- ◻ = hellrosa (Fb.)
- ◻ = dkl. rosa (Fb.)
- ✕ = violett (Fb.)
- ▲ = rot (Fb. 33)
- ▽ = gelb (Fb. 3)
- ▽ = türkis (Fb.)
- ◻ = azurblau (Fb.)
- 9 = grün (Fb. 2)
- ◻ = altrosa (Fb.)
- ◻ = rost (Fb. 9)
- ◻ = dunkelblau
- ◻ = mittelgrau
- N = flamingo (Fb.)
- + = mittelblau

Schema Modell 35



Modell 35

Stickschrift

