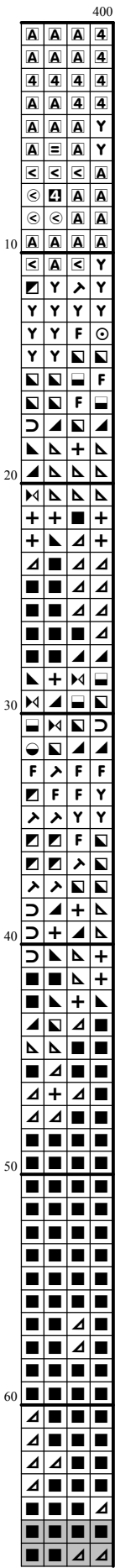
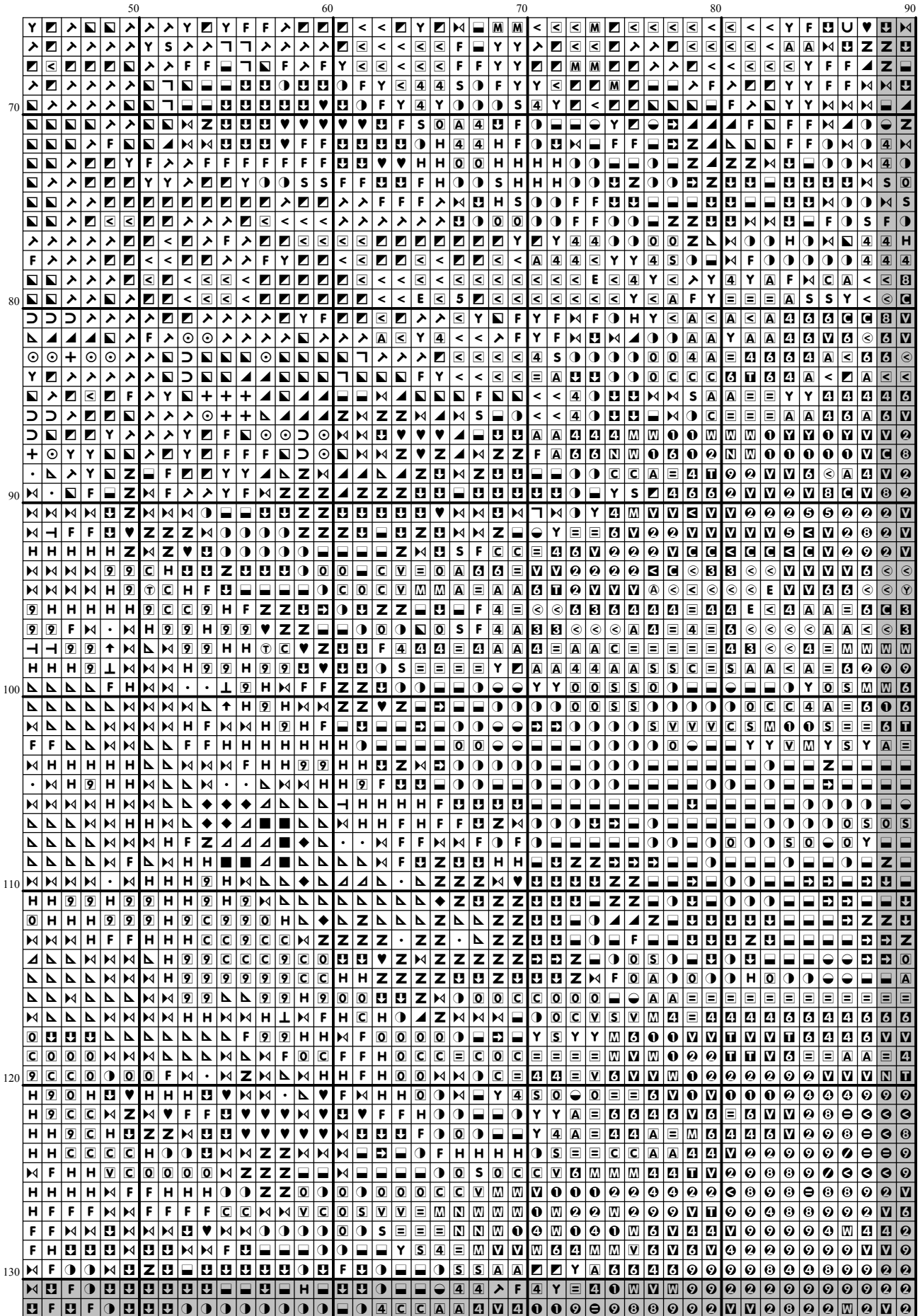
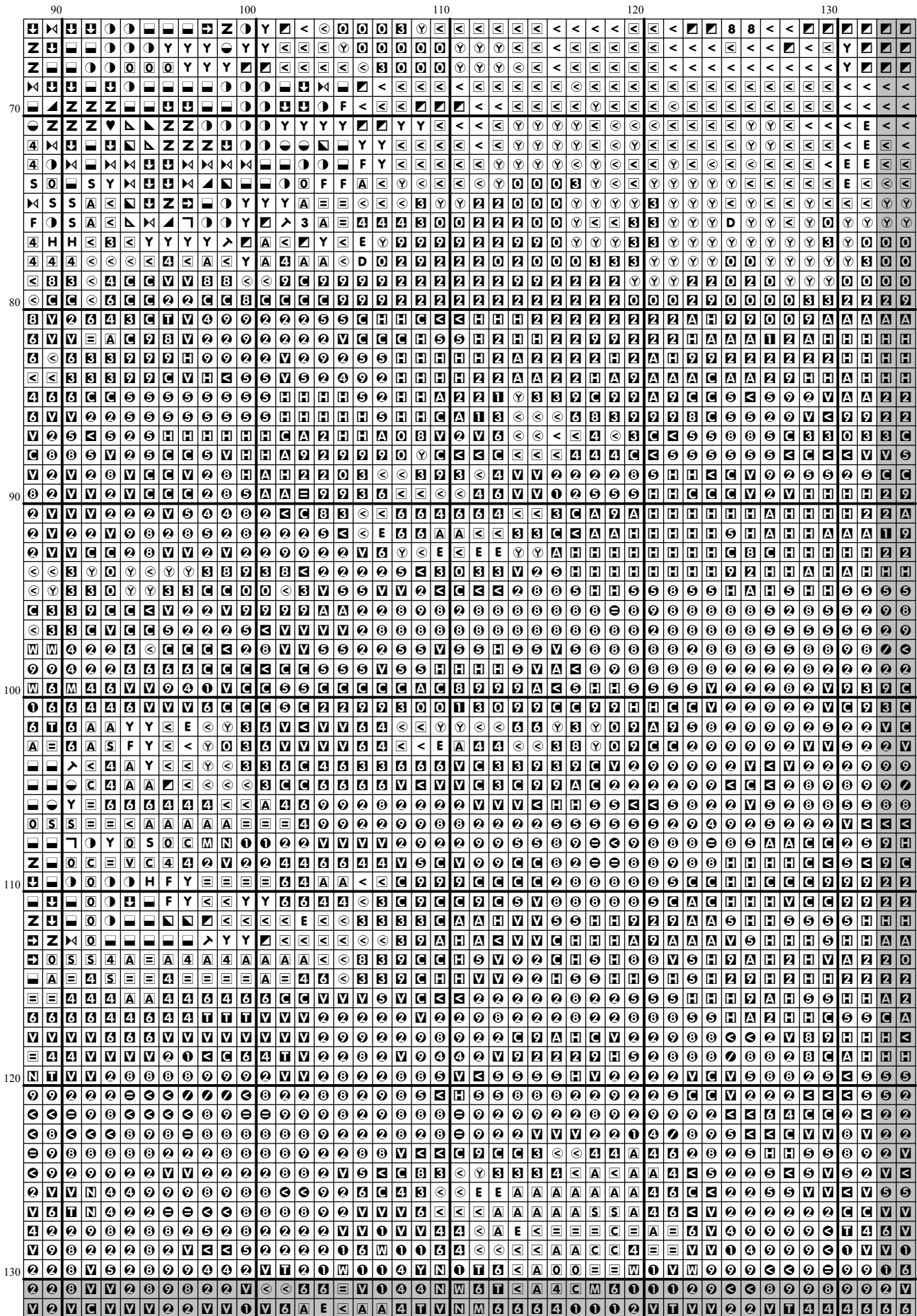


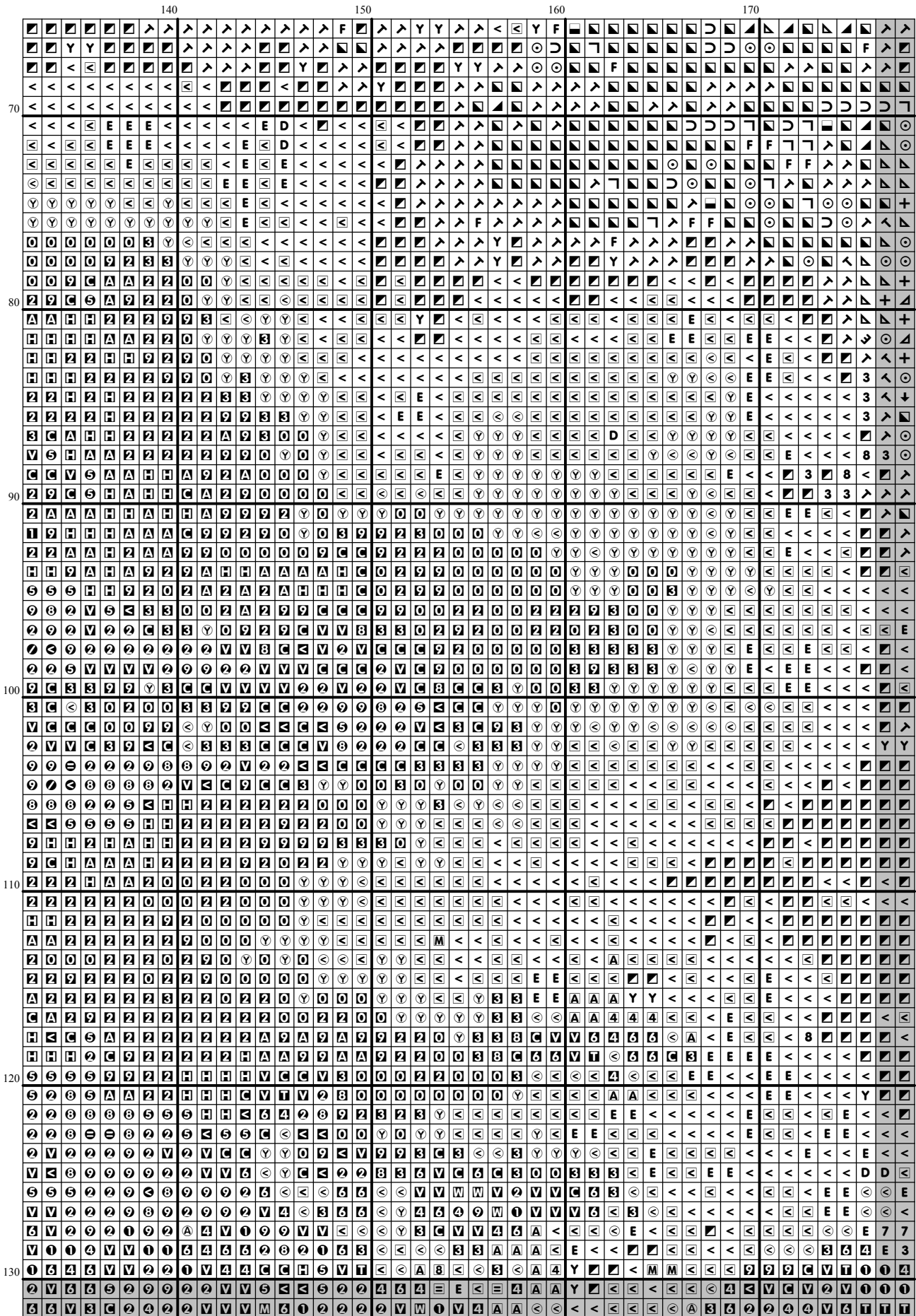
[illegible]

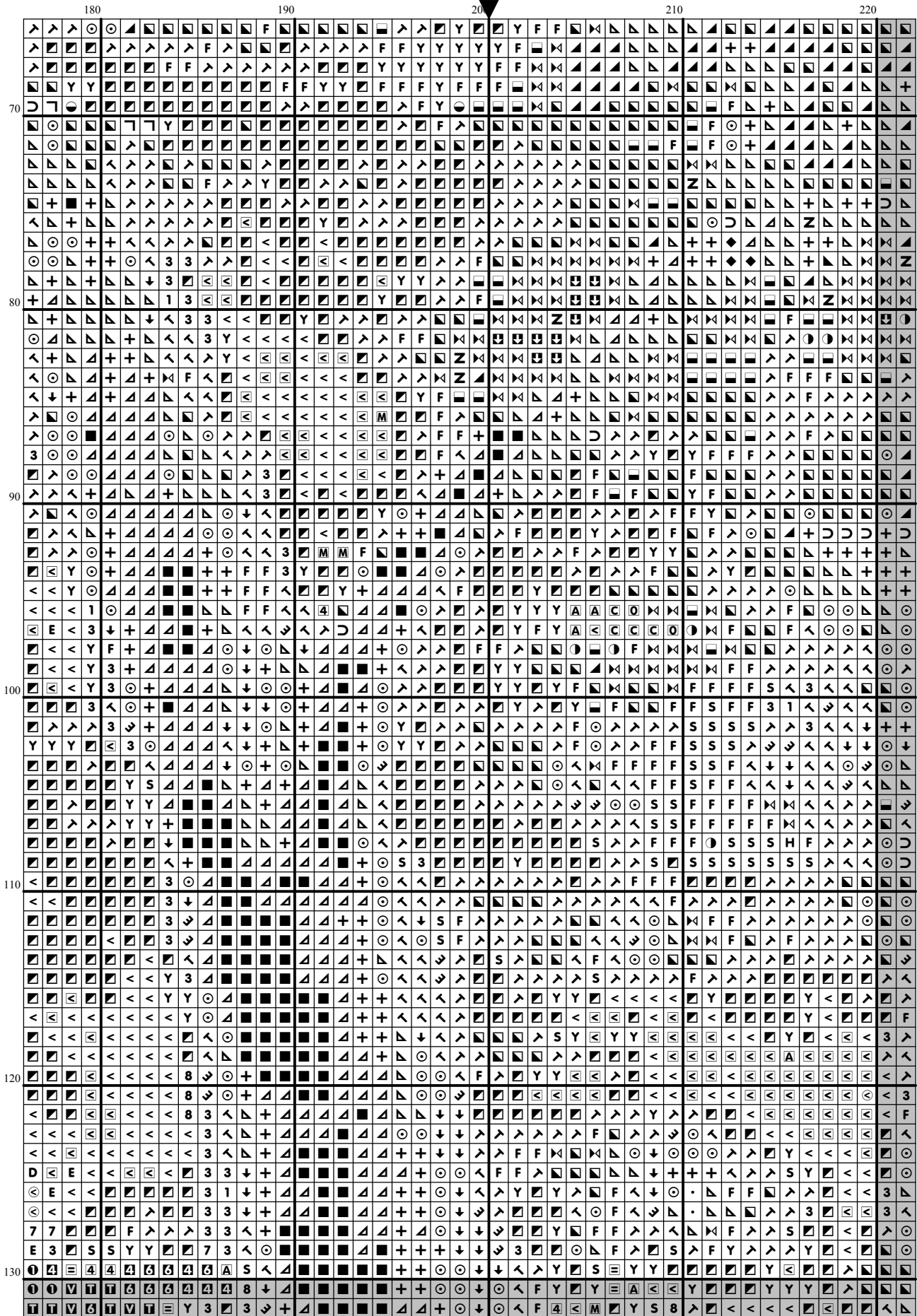


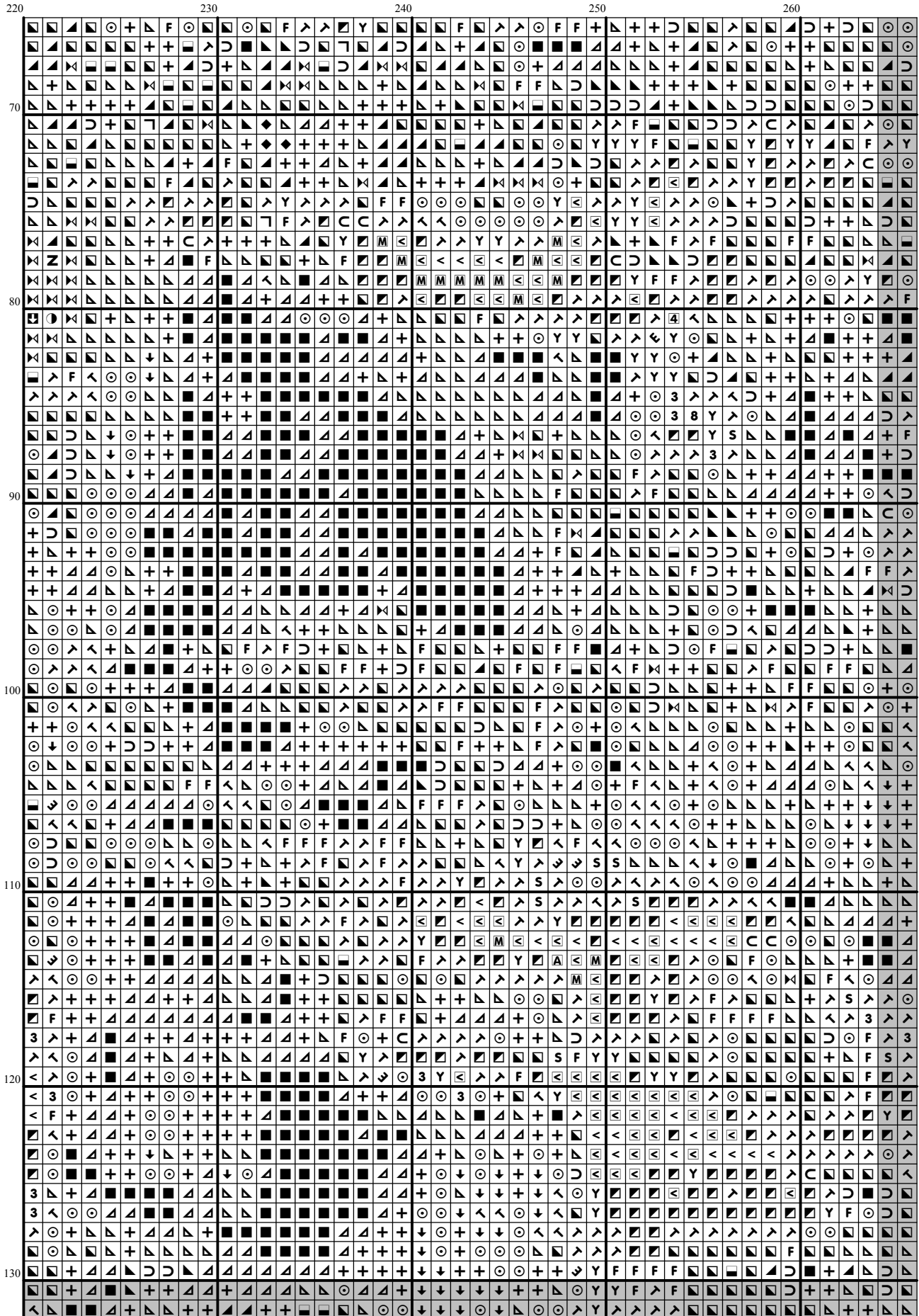


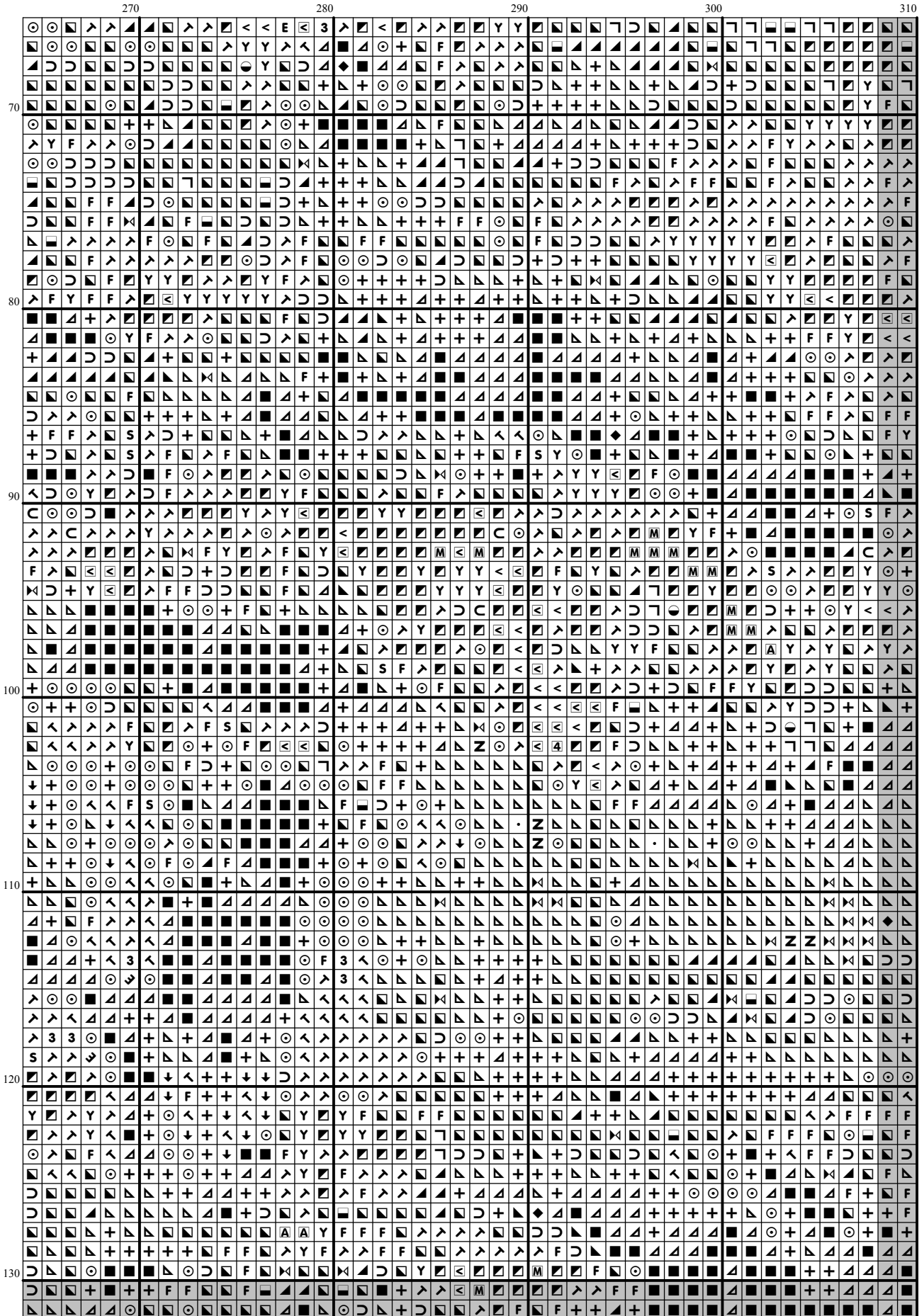


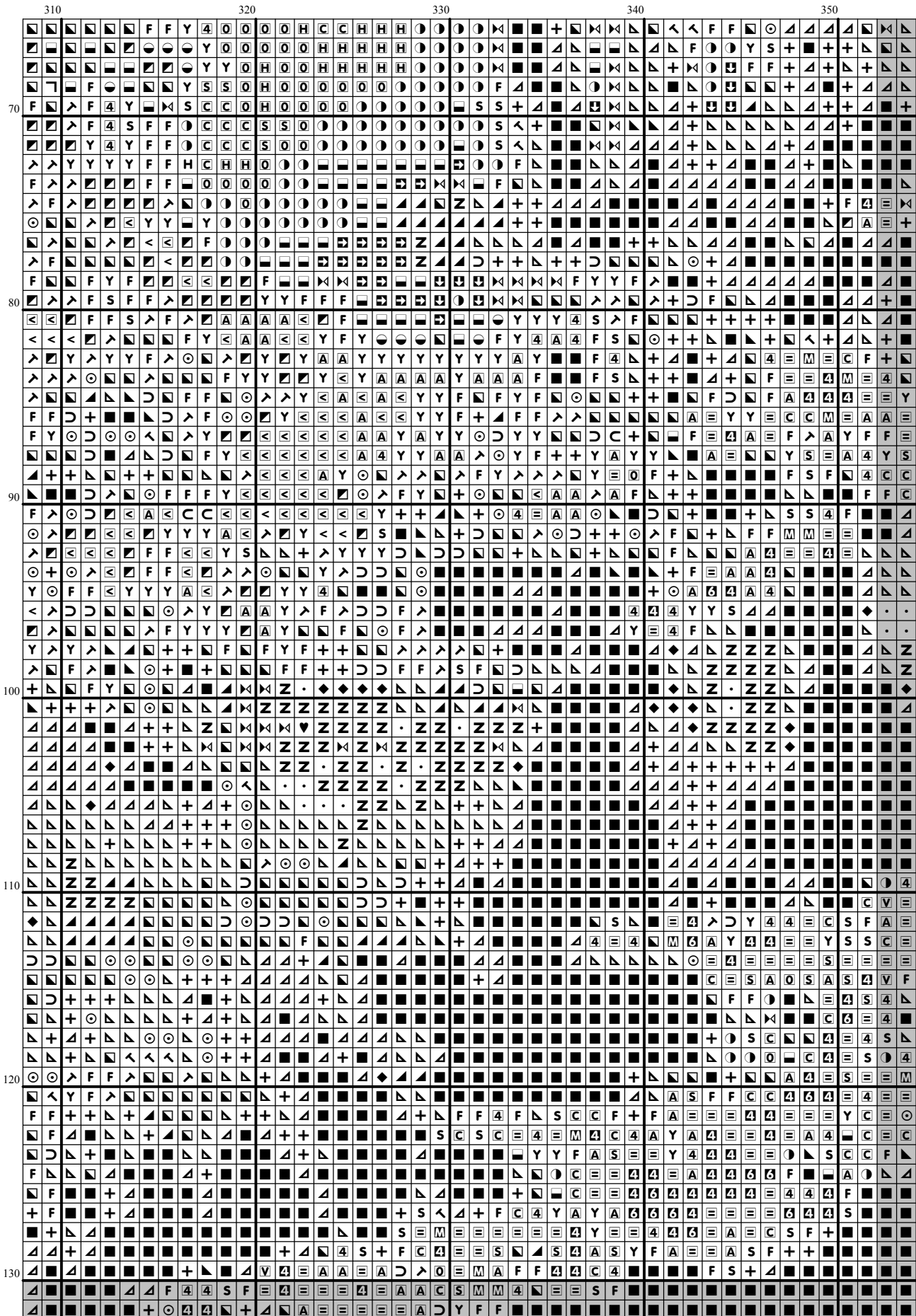


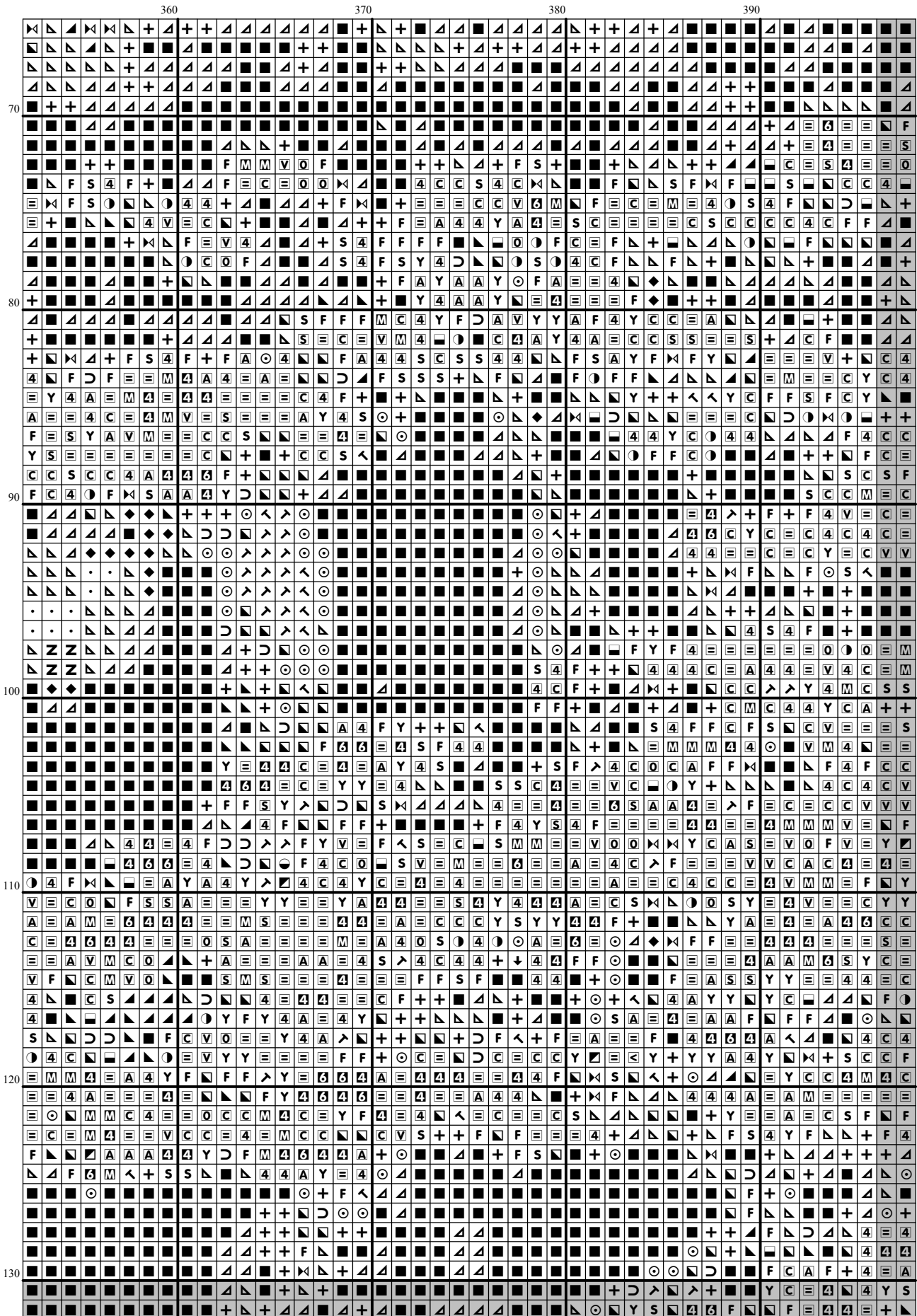


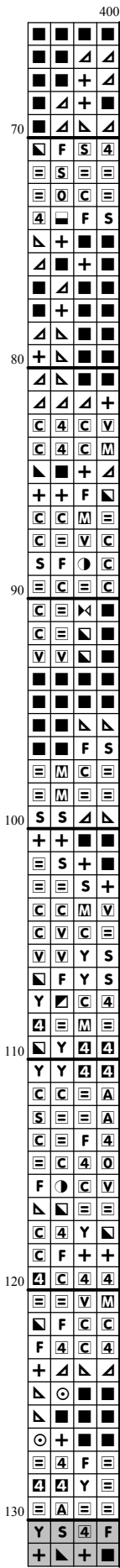


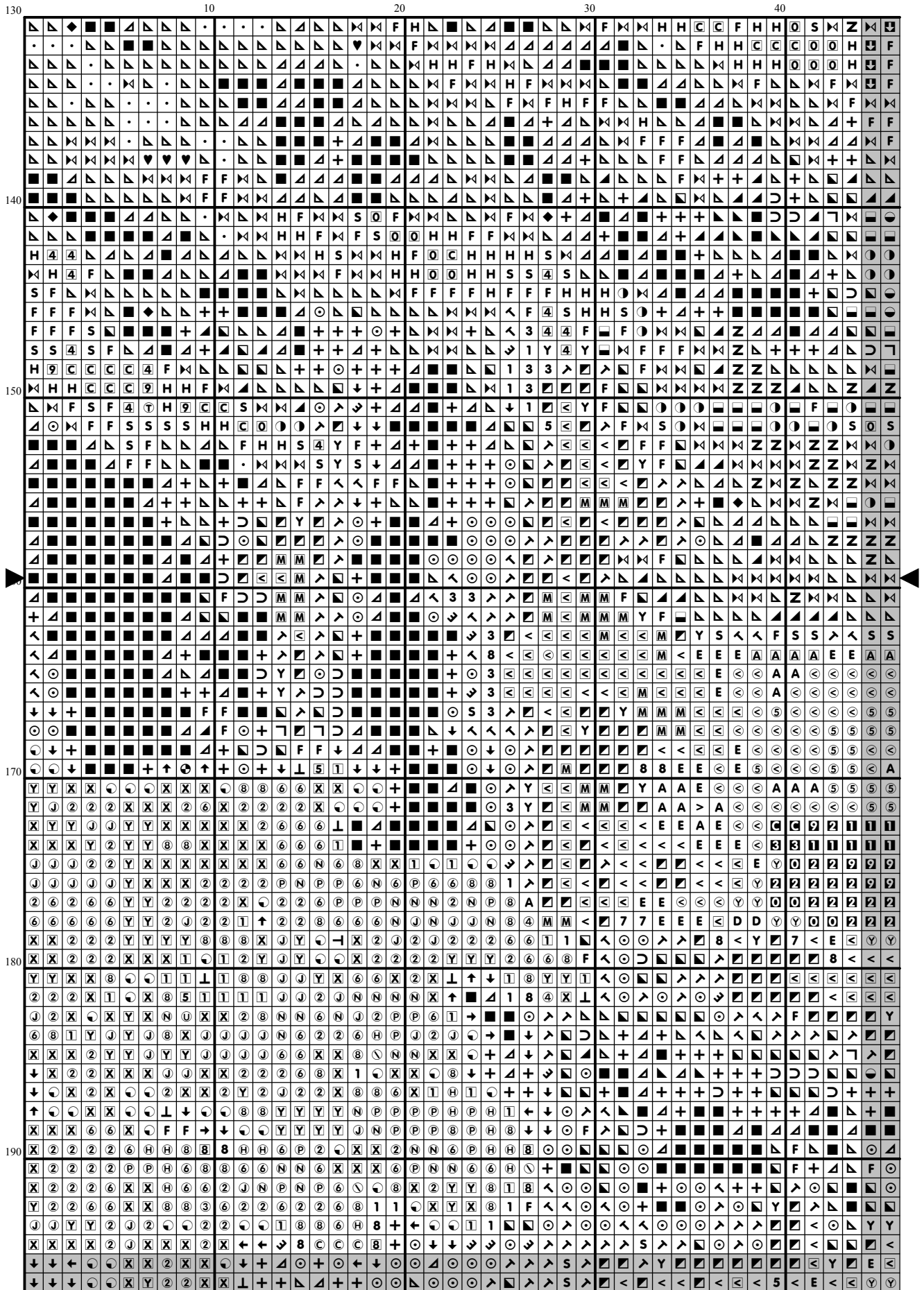


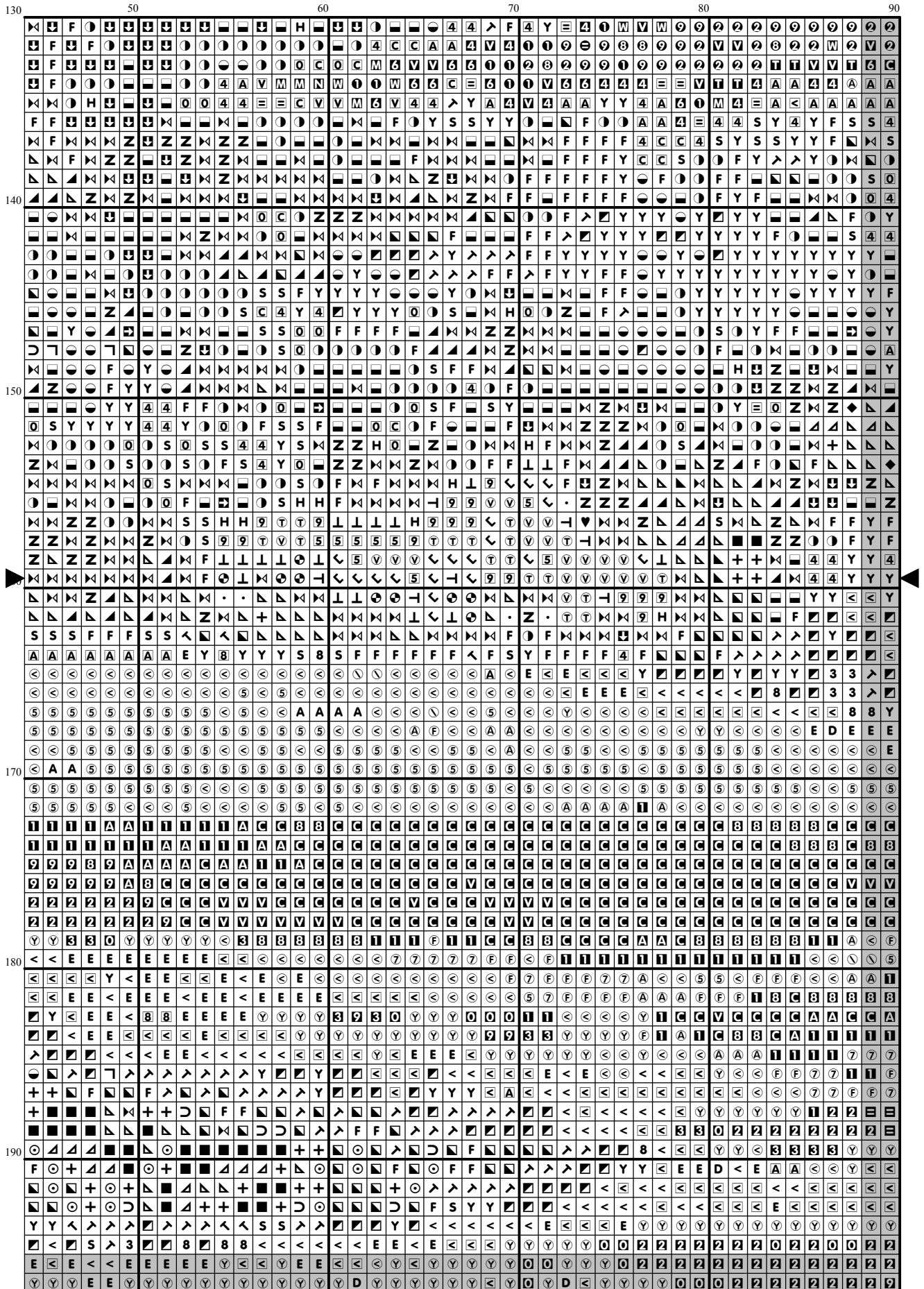




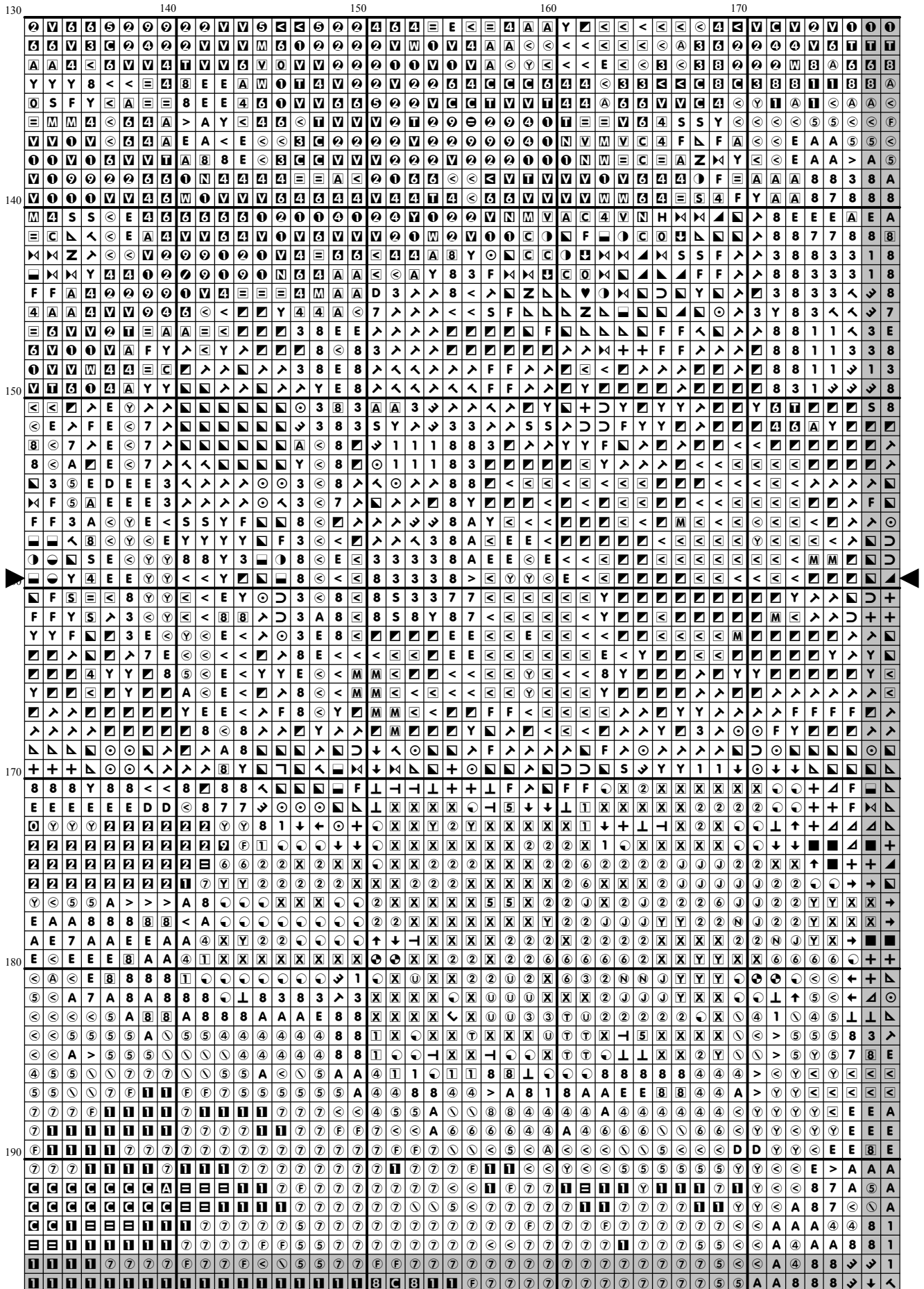


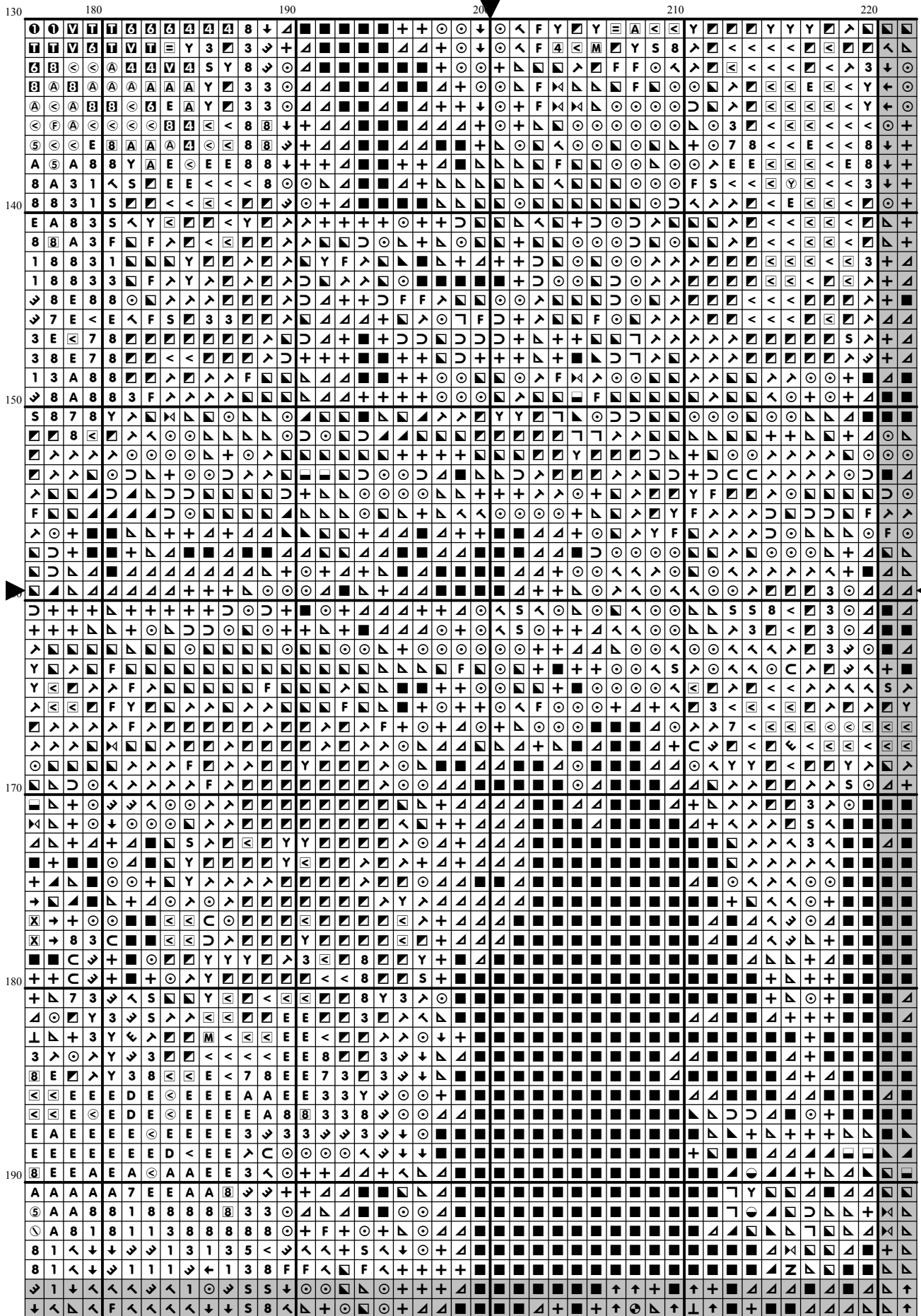


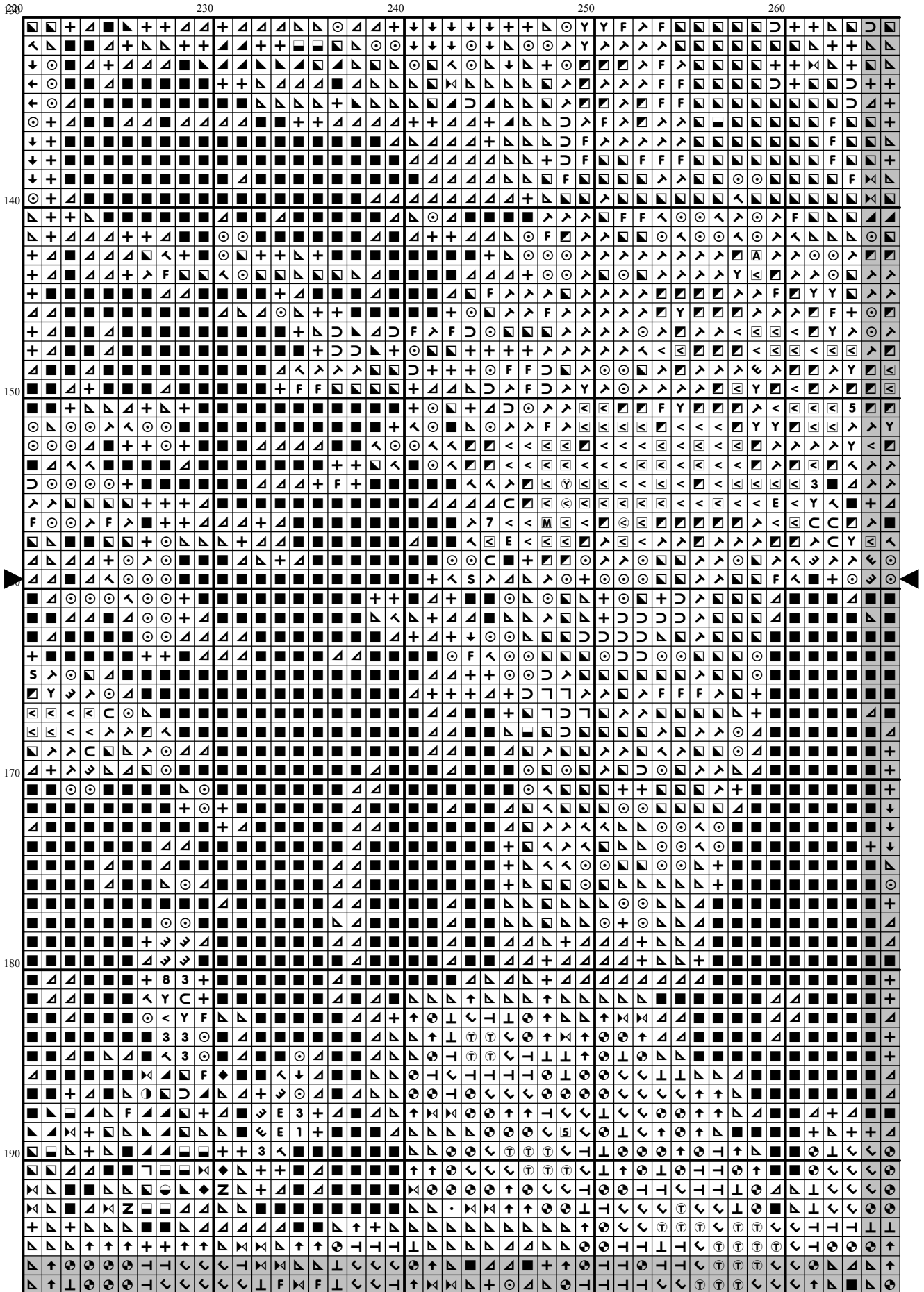


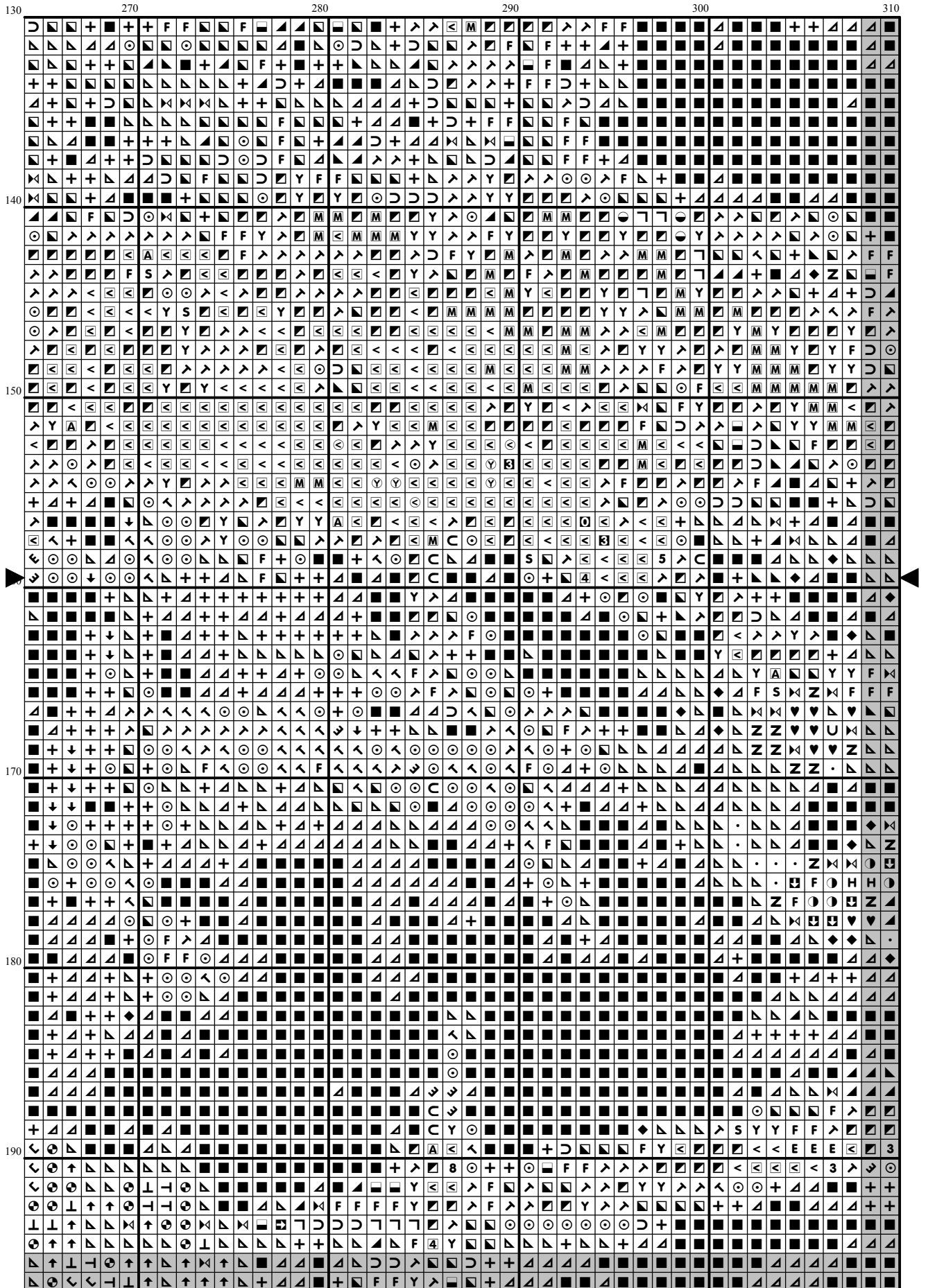


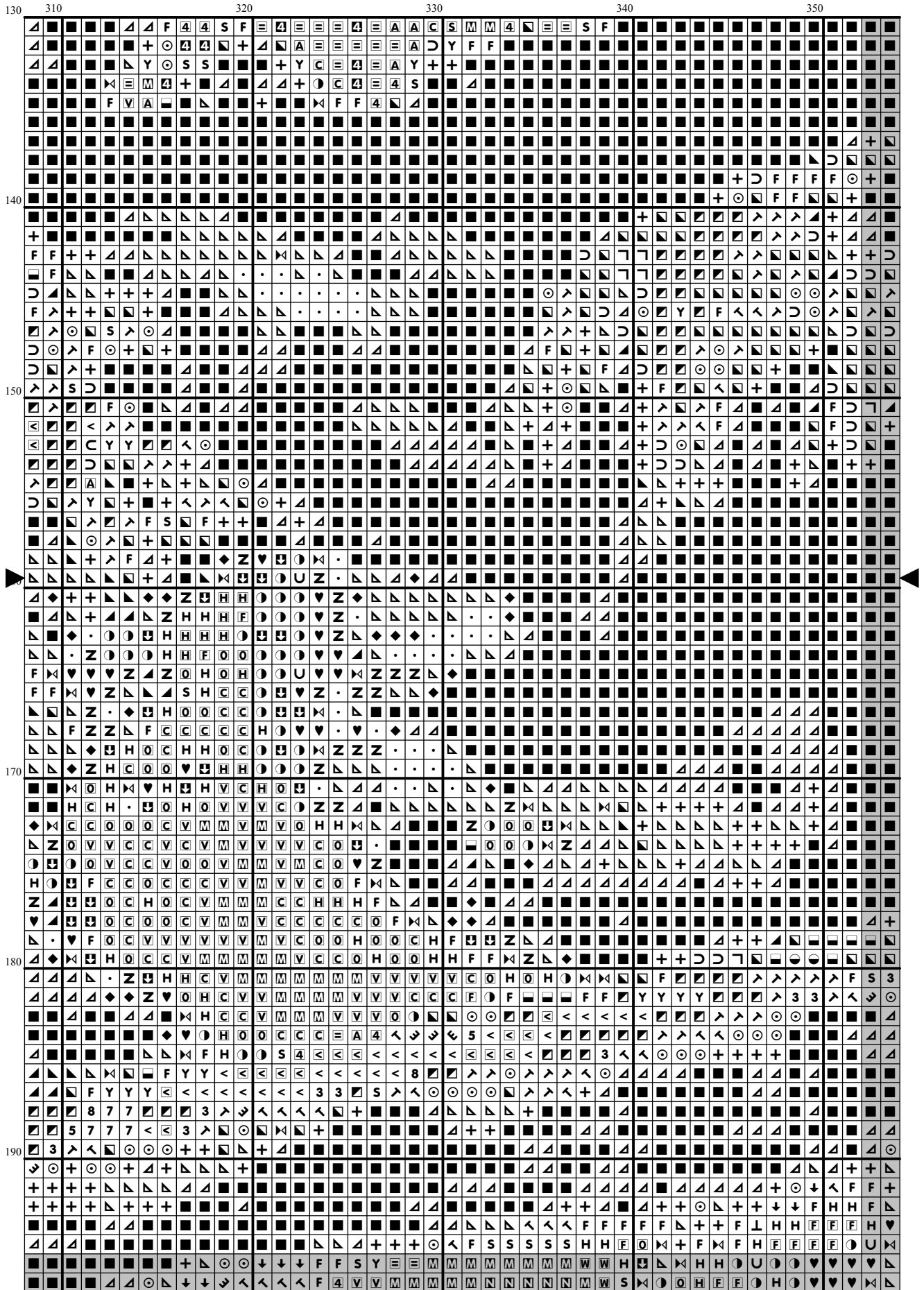
[illegible]

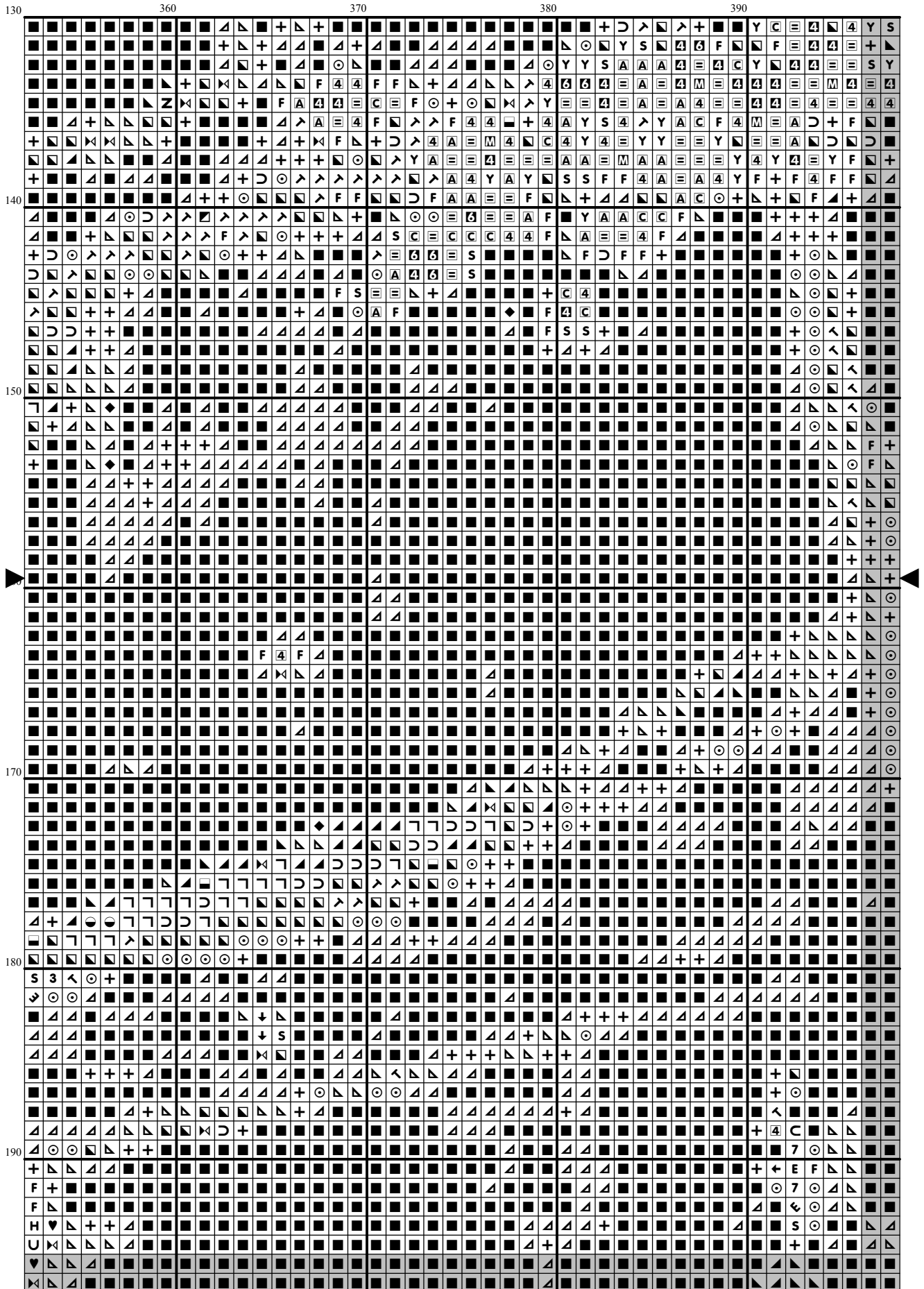


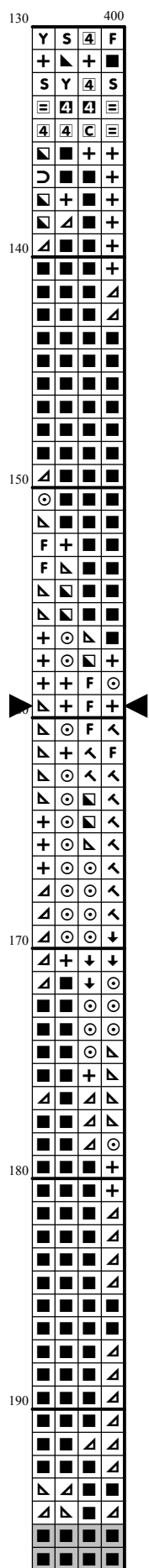


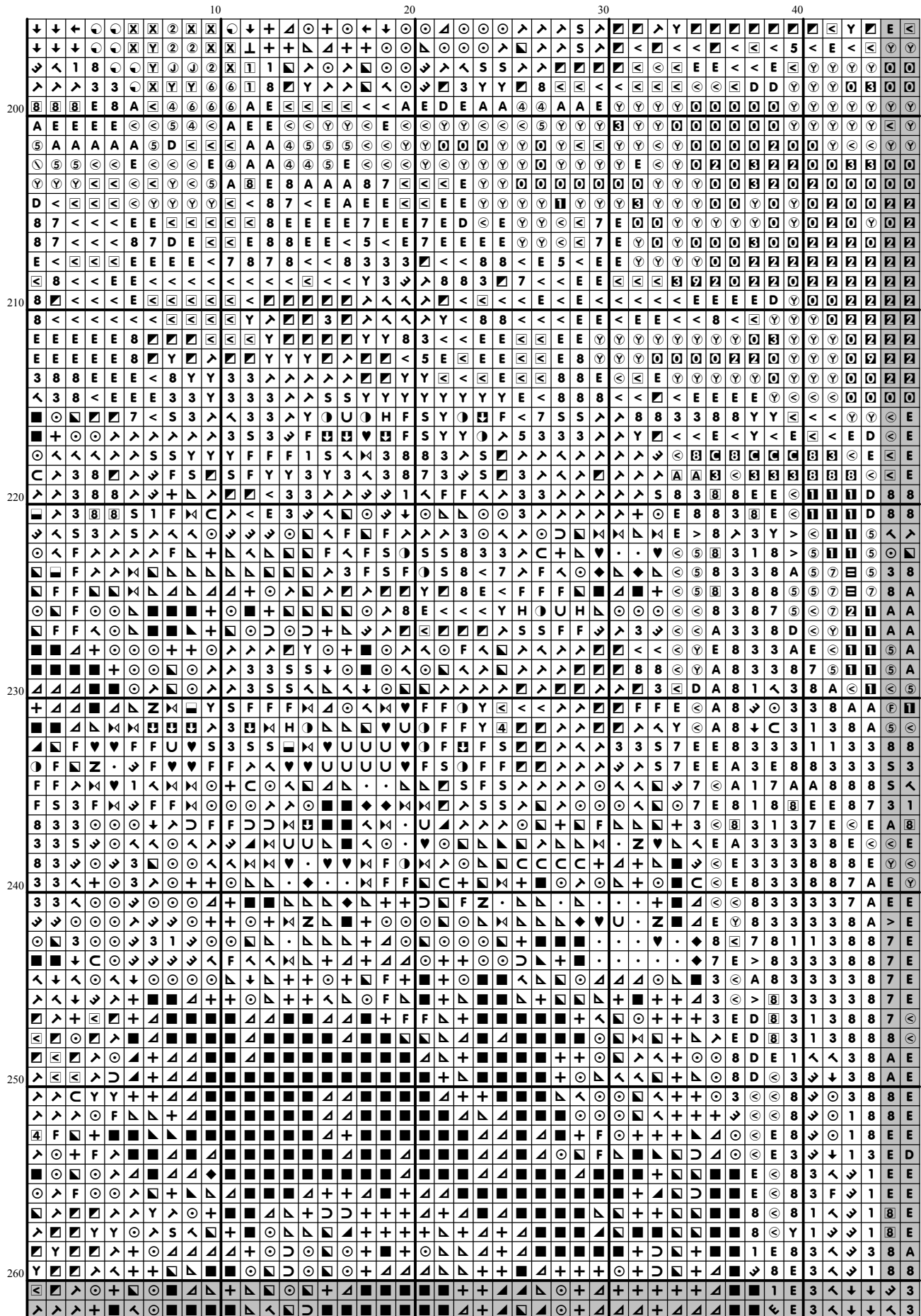


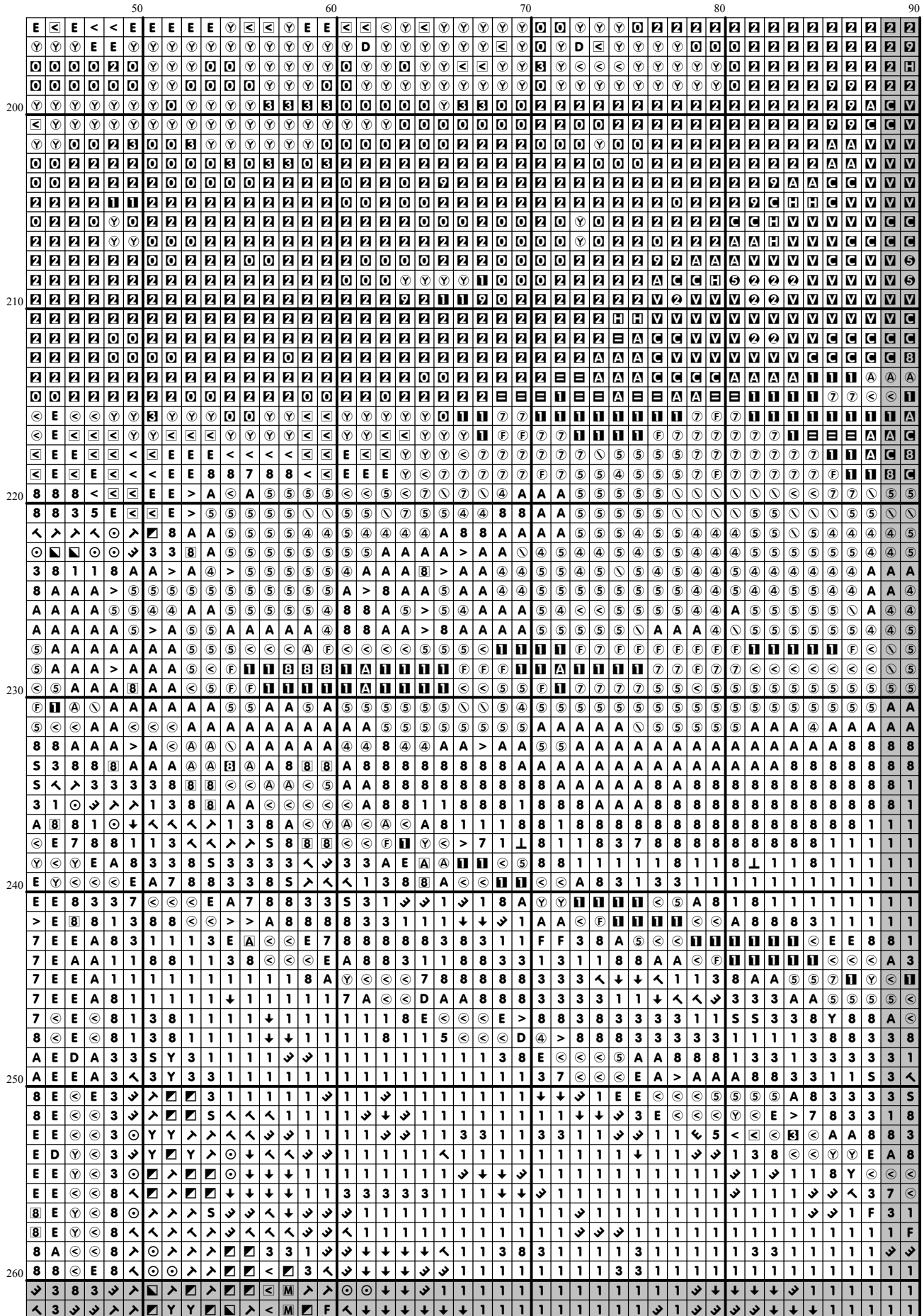


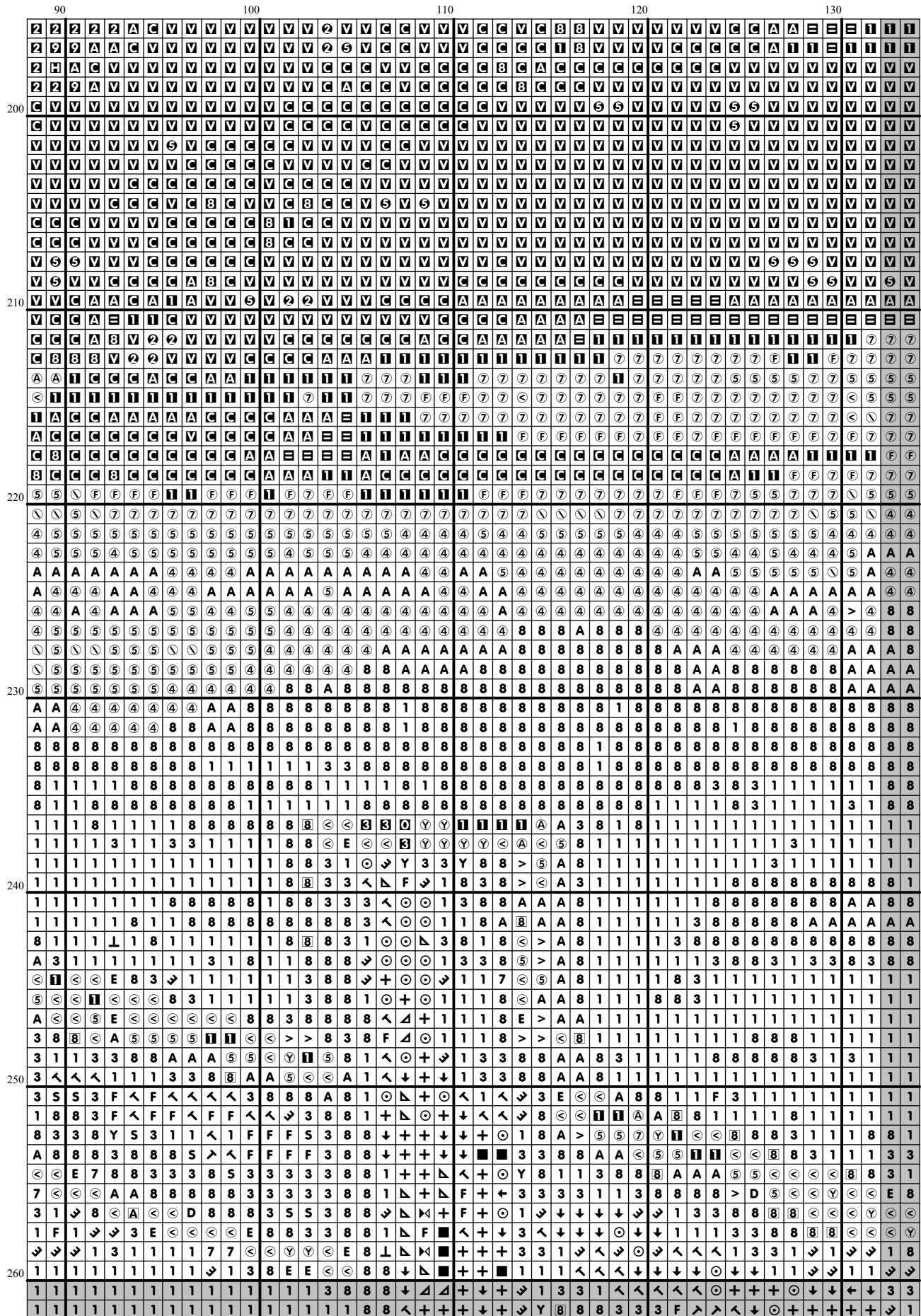




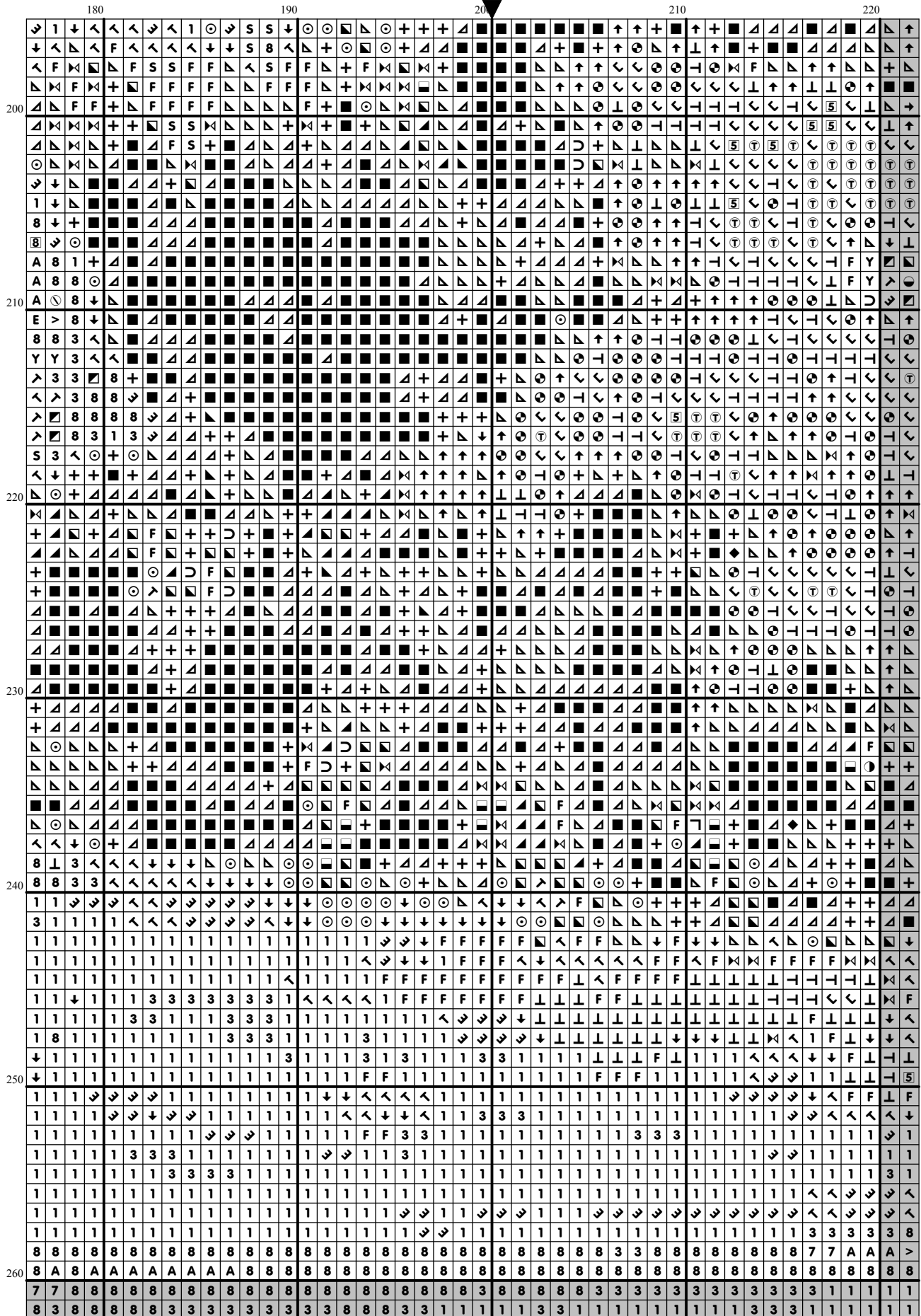


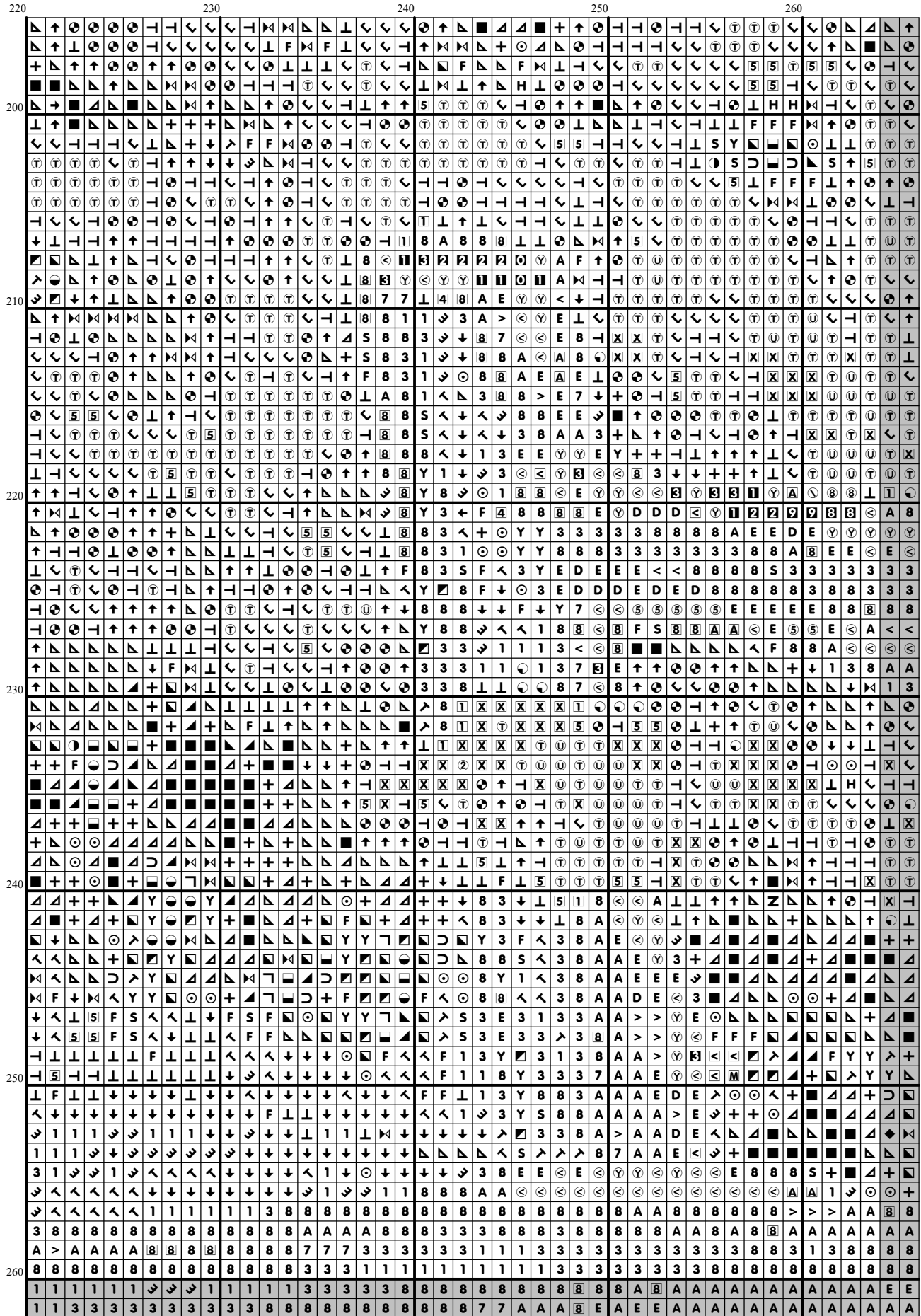


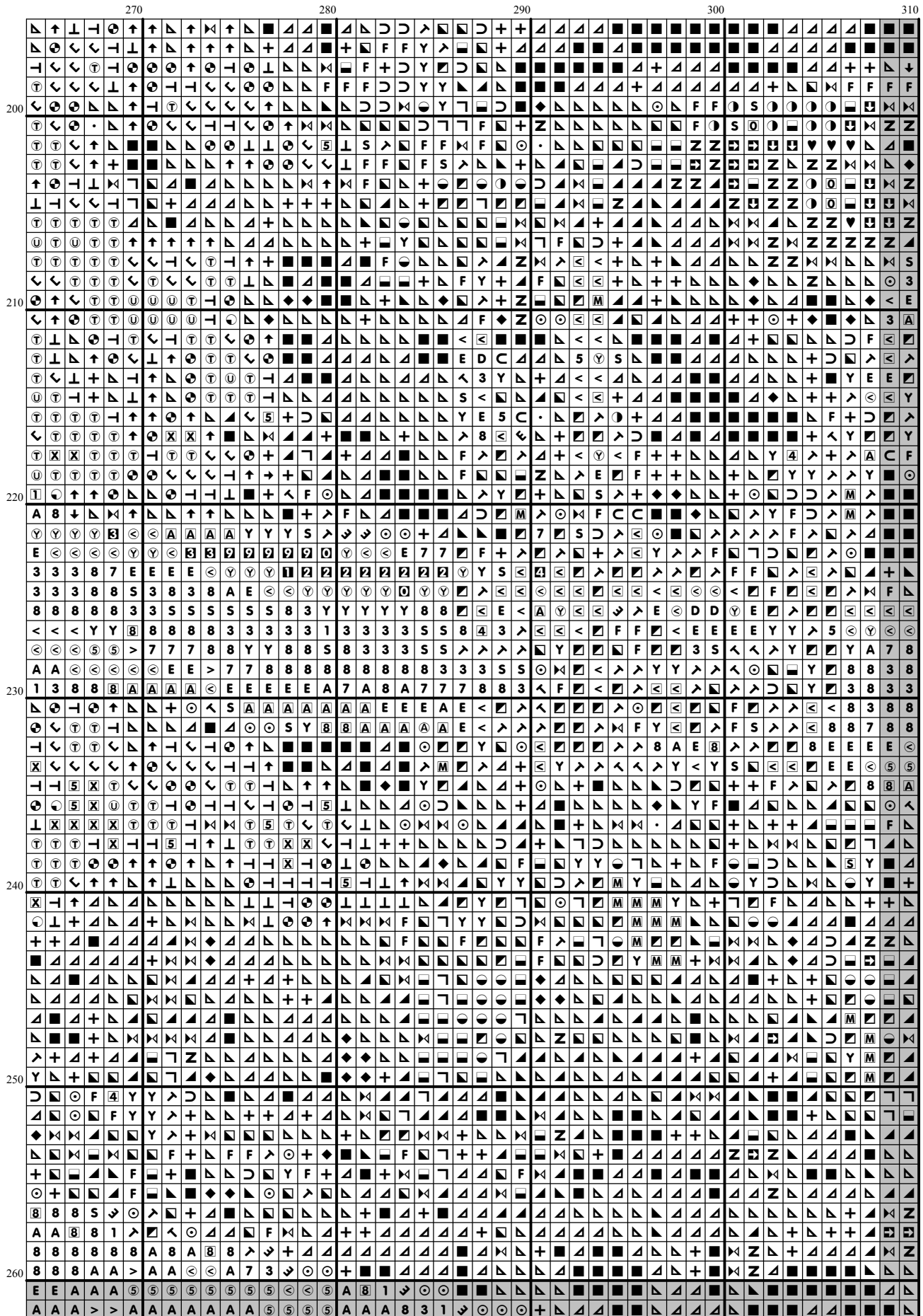


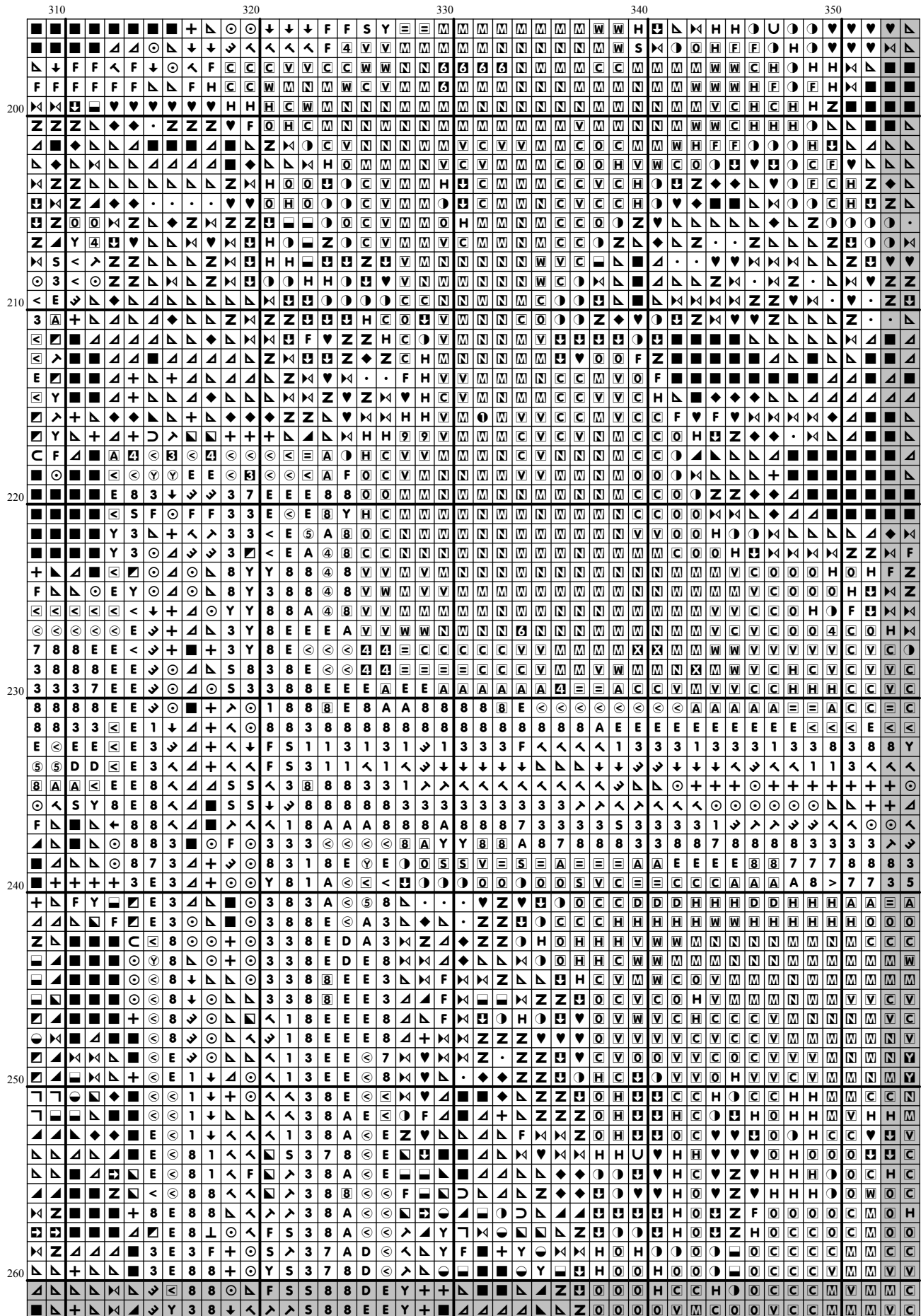


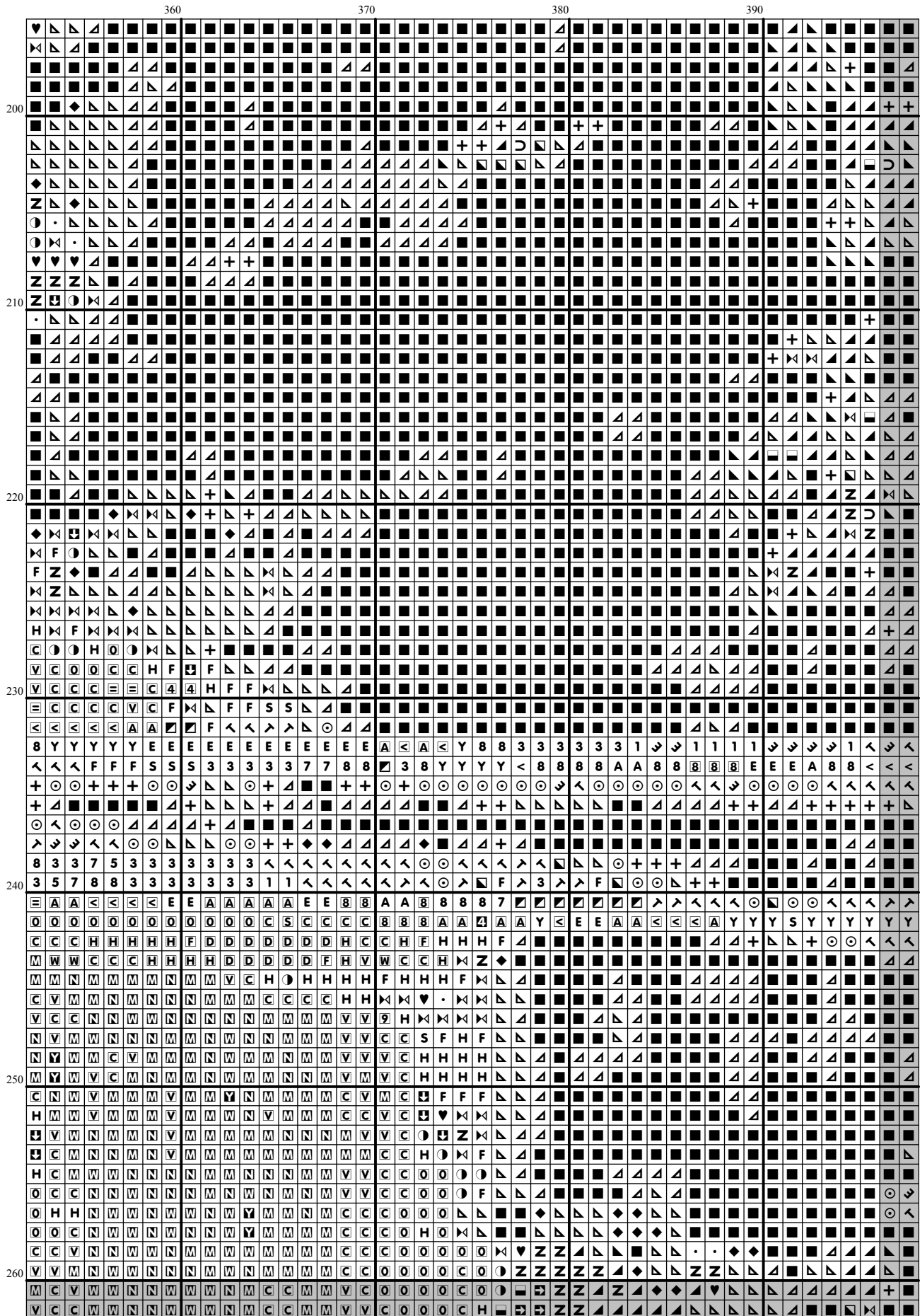
[illegible]



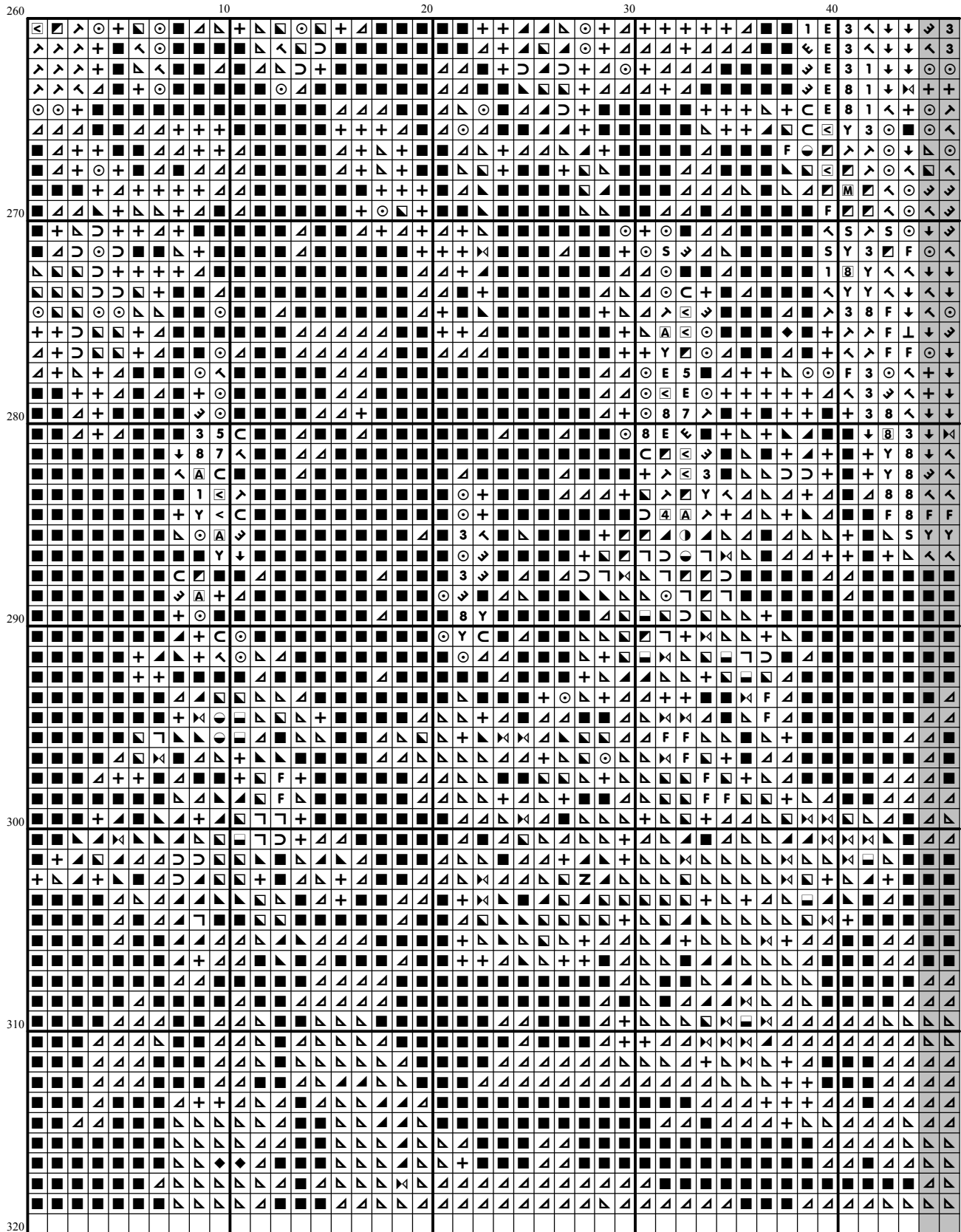


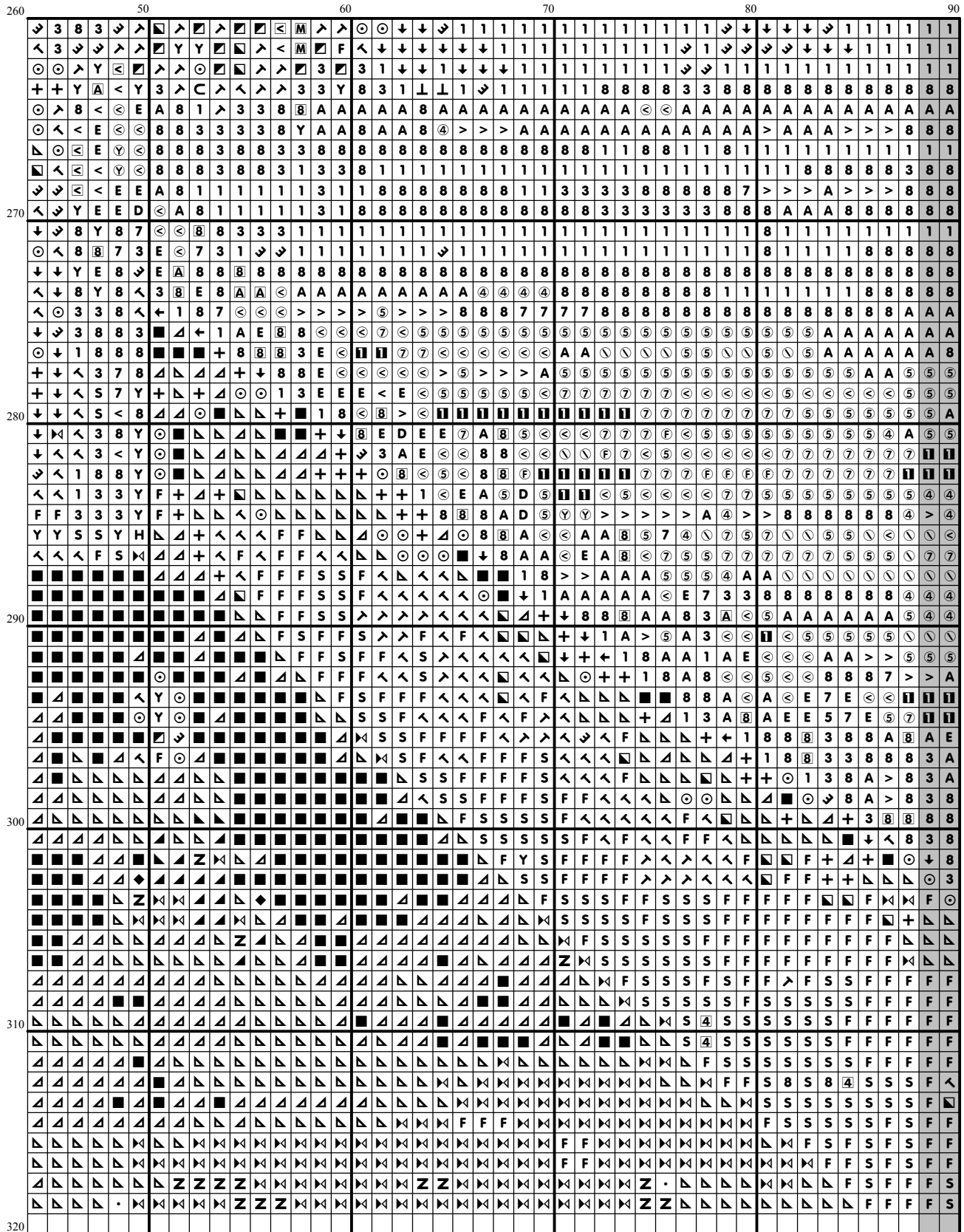












[illegible]

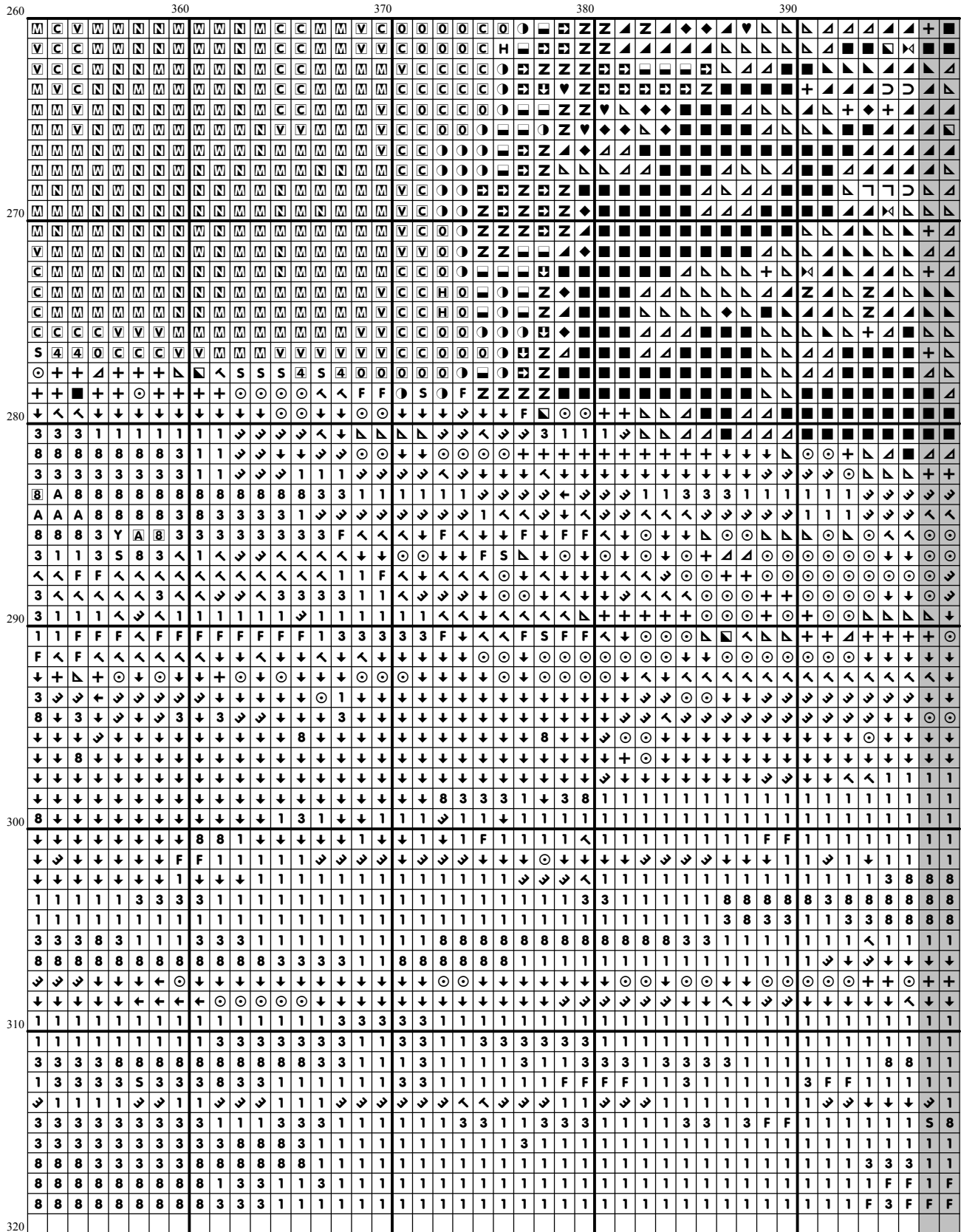
[illegible]

[illegible]

[illegible]

[illegible]

260	310	320	330	340	350
270	280	290	300	310	320
330	340	350	360	370	380
390	400	410	420	430	440
470	480	490	500	510	520
550	560	570	580	590	600
630	640	650	660	670	680
710	720	730	740	750	760
790	800	810	820	830	840
870	880	890	900	910	920
950	960	970	980	990	1000



260				400
	+	■	■	▲
	■	■	■	▲
	▲	▲	▲	▲
	▲	▲	▲	▲
	▲	▲	+	▲
	▲	■	▲	▲
	▲	▲	▲	▲
	▲	▲	▲	▲
	▲	▲	▲	▲
	▲	▲	▲	▲
	▲	▲	▲	▲
270	+	▲	▲	▲
	▲	▲	▲	▲
	+	▲	▲	▲
	▲	▲	▲	▲
	▲	▲	▲	▲
	▲	▲	▲	▲
	+	▲	▲	▲
	▲	▲	▲	+
	■	▲	▲	▲
280	■	■	▲	▲
	■	■	▲	▲
	▲	▲	■	■
	+	+	▲	▲
	↘	↘	↘	↘
	↙	↙	1	1
	○	○	+	+
	○	○	○	○
	○	↘	↘	↓
	○	↘	↓	↓
290	▲	↓	↙	↓
	+	○	○	+
	↓	↓	○	○
	↙	↓	↓	↓
	↓	↓	↘	↘
	○	○	↘	↓
	↓	↓	↓	↓
	↓	↓	↓	↓
	1	1	1	1
	1	1	1	1
300	1	1	1	1
	1	1	1	1
	8	8	8	8
	8	8	8	8
	8	8	8	8
	1	1	1	↙
	↓	↓	↓	↓
	+	+	○	↓
	↓	↓	1	1
	1	1	1	8
310	1	1	8	8
	1	1	8	8
	1	1	F	F
	↘	1	1	1
	S	8	8	S
	1	1	1	1
	1	1	1	1
	1	F	1	1
	F	F	S	3
320				

Instructions and Symbol Key for Design "SC226 Wooden Bridge"

Fabric: 14 count white Aida

Stitches: 400 x 319 **Size:** 28.57 x 22.79 inches or 72.57 x 57.88 cm

Colours: DMC

Use **2** strands of thread for cross stitch

Sym	No.	Colour Name	Sym	No.	Colour Name
U	158	Deep mauve	X	159	Light blue grey
H	165	Pale moss green	O	166	Moss green
5	167	Dark mustard brown	Y	168	Mouse grey
C	169	Pewter grey	●	211	Pale violet
■	310	Black	○	315	Antique lilac
⊕	316	Heather lilac	H	317	Steel grey
V	318	Granite grey	∩	319	Shadow green
D	322	Delft blue	⊥	327	Dark violet
•	336	Indigo blue	⑥	356	Medium terracotta
◐	367	Bay leaf green	A	370	Medium mustard
◑	371	Green plains	⋈	413	Iron grey
N	415	Chrome grey	④	420	Hazelnut
<	470	Olive green	⊞	471	Tarragon green
⊞	472	Bud green	▲	500	Ivy green
■	501	Pond green	◻	502	Blue green
■	520	Dark fern green	≡	522	Trellis green
⊞	523	Ash green	⊞	524	Light grey green
F	535	Stone grey	↑	550	Blackcurrant
⊕	552	Violet	Ⓥ	553	Amethyst violet
⊞	561	Cypress tree green	5	580	Cactus green
D	581	Grashopper green	1	610	Dark golden brown
8	611	Sisal brown	Ⓐ	612	String brown
8	613	Rope brown	8	640	Green grey
V	644	Light green grey	S	645	Dark steel grey
4	646	Platinum grey	Ⓜ	648	Peppergrey
7	680	Dark old gold	ⓔ	712	Cream
Ⓢ	718	Magenta	≡	729	Honey gold
↶	730	Khaki green	7	732	Bronze green
Ⓢ	733	Golden green	9	734	Light Olive green
④	762	Pearl grey	Ⓢ	819	Baby pink
Ⓢ	822	Cotton cream	◆	823	Blueberry blue
>	831	Green bronze	Ⓜ	833	Brass
A	834	Light brass	▲	890	Deep forest green
→	898	Teak brown	Z	924	Dark pearl green
M	927	Oyster grey	W	928	Light pearl grey
⊞	930	Slate grey	H	931	Blue grey
W	932	Seagull blue	+	934	Algae green
⊕	935	Undergrowth green	↘	936	Oaktree moss green
↗	937	Moss green	└	986	Dark forest green
■	987	Basil green	Ⓜ	988	Forest green
3	3011	Artichoke green	E	3012	Marsh green
↓	3021	Cliff grey	←	3031	Dark Mocha brown
⊞	3033	Antique silver	9	3041	Medium lilac
⊞	3046	Rye beige	Ⓢ	3047	Silver birch beige
A	3052	Silver green	Ⓢ	3072	Pale pearl grey
N	3328	Dark salmon	C	3345	Dark Hunter Green
⊞	3347	Insect green	②	3350	Dusty raspberry
↖	3362	Fig tree green	Y	3363	Herb green

▲	3371	Ebony	③	3687	Raspberry mauve
⊠	3721	Earth pink	⑤	3726	Dark antique mauve
⊥	3740	Dark antique violet	♥	3750	Deep petrol blue
●	3768	Storm grey	⑧	3772	Rosy tan
▲	3799	Anthracite grey	Ⓜ	3805	Fuschia pink
ⓕ	3807	Cornflower blue	Ⓢ	3816	Snake green
Ⓢ	3819	Light moss green	ⓕ	3828	Oaktree brown
Ⓨ	3831	Dark raspberry	ⓙ	3832	Strawberry
Ⓟ	3833	Light strawberry	●	3834	Grape
↙	3835	Medium grape	Ⓡ	3860	Taupe mauve
Ⓒ	3861	Light taupe	④	3863	Otter brown
⑨	3866	Garlic cream			

This chart has been designed and printed with our best intentions of being without mistakes. However, the possibility of human error, printing mistakes or the variation of individual stitching does exist, and we regret that we cannot be responsible for this.

Note: The shaded blocks on the chart represent overlapping stitches.
 Copyright © Classic Cross Stitch 2005 All rights reserved.