

Madonna Della Seggiola by Raphael

	DMC 936 Very Dark Avocado Green
	DMC 500 Very Dark Blue Green
	DMC 3031 Very Dark Mocha Brown
	DMC 935 Dark Avocado Green
	DMC 839 Dark Beige Brown
	DMC 3011 Dark Khaki Green
	DMC 3781 Dark Mocha Brown
	DMC 924 Very Dark Gray Green
	DMC 890 Ultra Dark Pistachio Green
	DMC 645 Very Dark Beaver Gray
	DMC 930 Dark Antique Blue
	DMC 3346 Hunter Green
	DMC 334 Medium Baby Blue
	DMC 931 Medium Antique Blue
	DMC 407 Dark Desert Sand
	DMC 300 Very Dark Mahogany
	DMC 3862 Dark Mocha Beige
	DMC 420 Dark Hazelnut Brown
	DMC 3772 Very Dark Desert Sand
	DMC 610 Dark Drab Brown
	DMC 611 Drab Brown
	DMC 356 Medium Terra Cotta
	DMC 782 Dark Topaz
	DMC 3826 Golden Brown
	DMC 3012 Medium Khaki Green
	DMC 370 Medium Mustard
	DMC 783 Medium Topaz
	DMC 612 Light Drab Brown
	DMC 372 Light Mustard
	DMC 922 Light Copper
	DMC 437 Light Tan
	DMC 725 Topaz
	DMC 932 Light Antique Blue
	DMC 640 Very Dark Beige Gray
	DMC 807 Peacock Blue
	DMC 3782 Light Mocha Brown
	DMC 729 Medium Old Gold
	DMC 834 Very Light Golden Olive
	DMC 738 Very Light Tan
	DMC 727 Very Light Topaz
	DMC 644 Medium Beige Gray
	DMC 3865 Winter White

* To work out the size of the finished article, take the number of stitches and divide it by the count of your fabric (e.g 14,16,18 count aida etc) to get the size in inches. Times it by 2.5 to get centimetres.

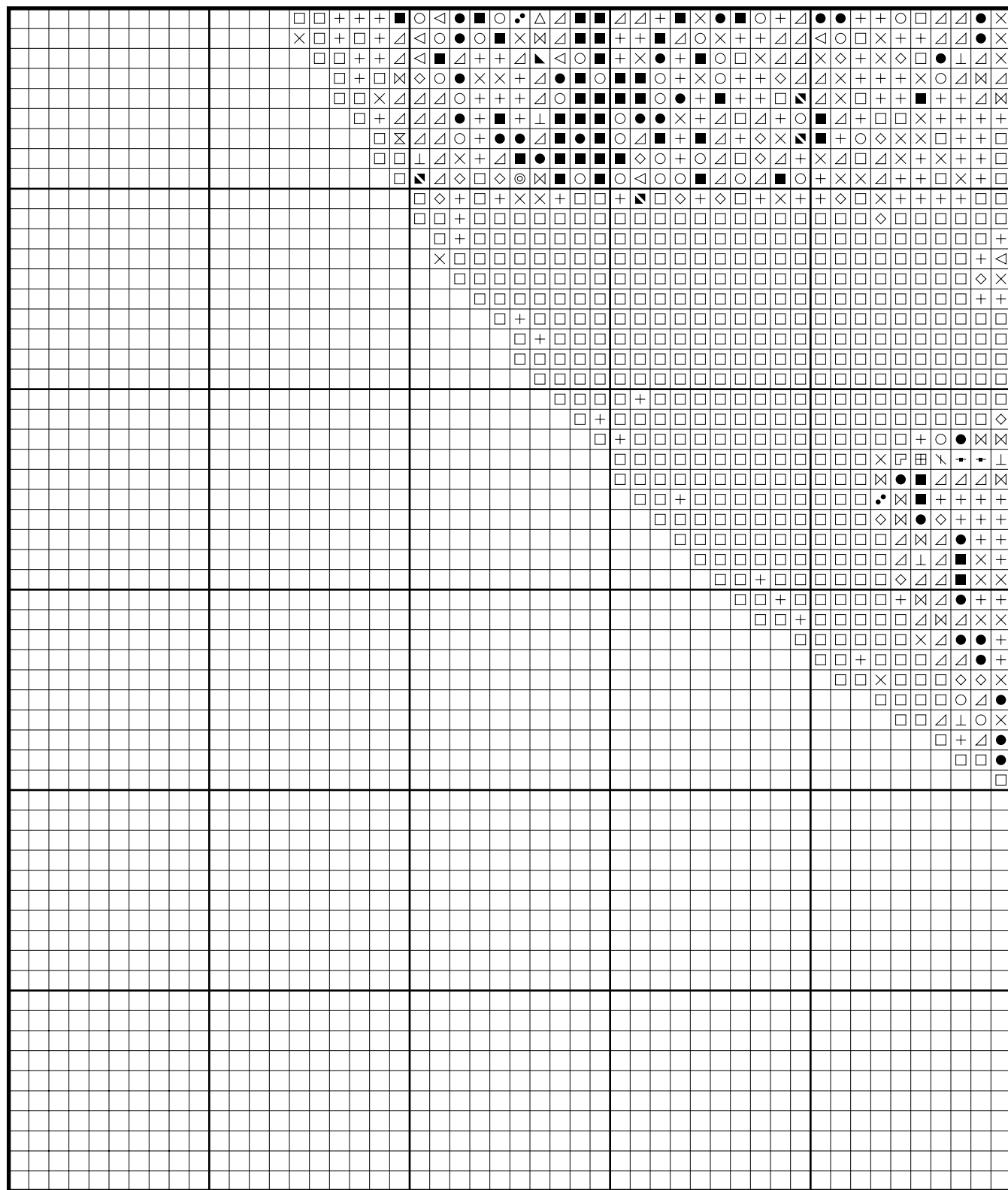
* PLEASE NOTE: Our patterns are printed in a grid showing 10 x 10 stitches in each box. You may notice that the pages that run vertical have a maximum number of 9 rows at the top or bottom of a page. You are not missing a row or rows of stitches, this is the way our patterns print. It allows us to have larger print for your symbols.

* You should begin at the centre of the pattern which has been marked by a circle for you. To find the centre of the pattern it is just a matter of counting the vertical and horizontal stitches and divide them by half. Where the two points meet that is the centre.

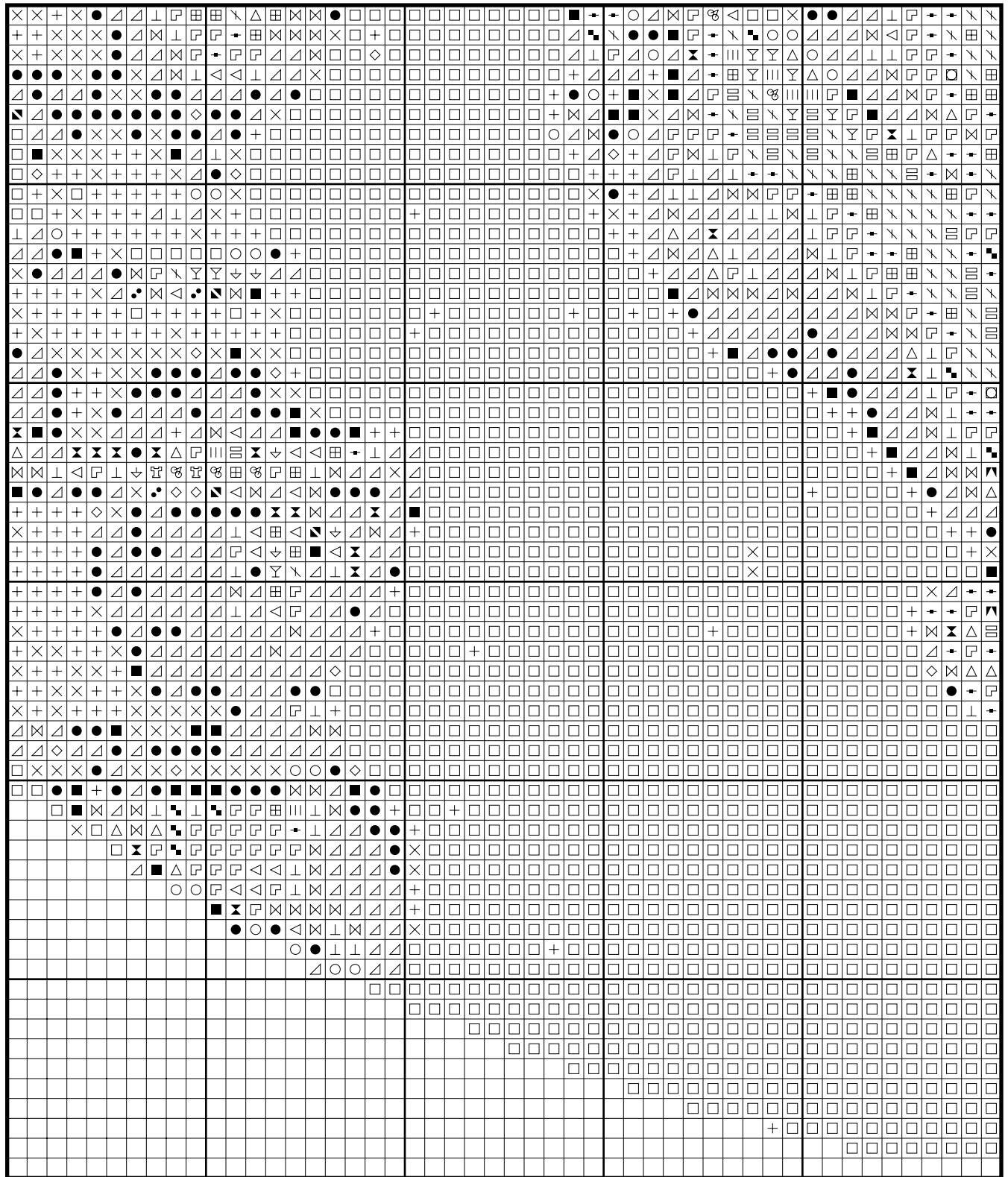
* Pattern is for personal use only and is not to be sold, copied or redistributed in any form. Copyright of Artec Cross Stitch.

* 230 stitches wide by 232 stitches high, 42 colours used

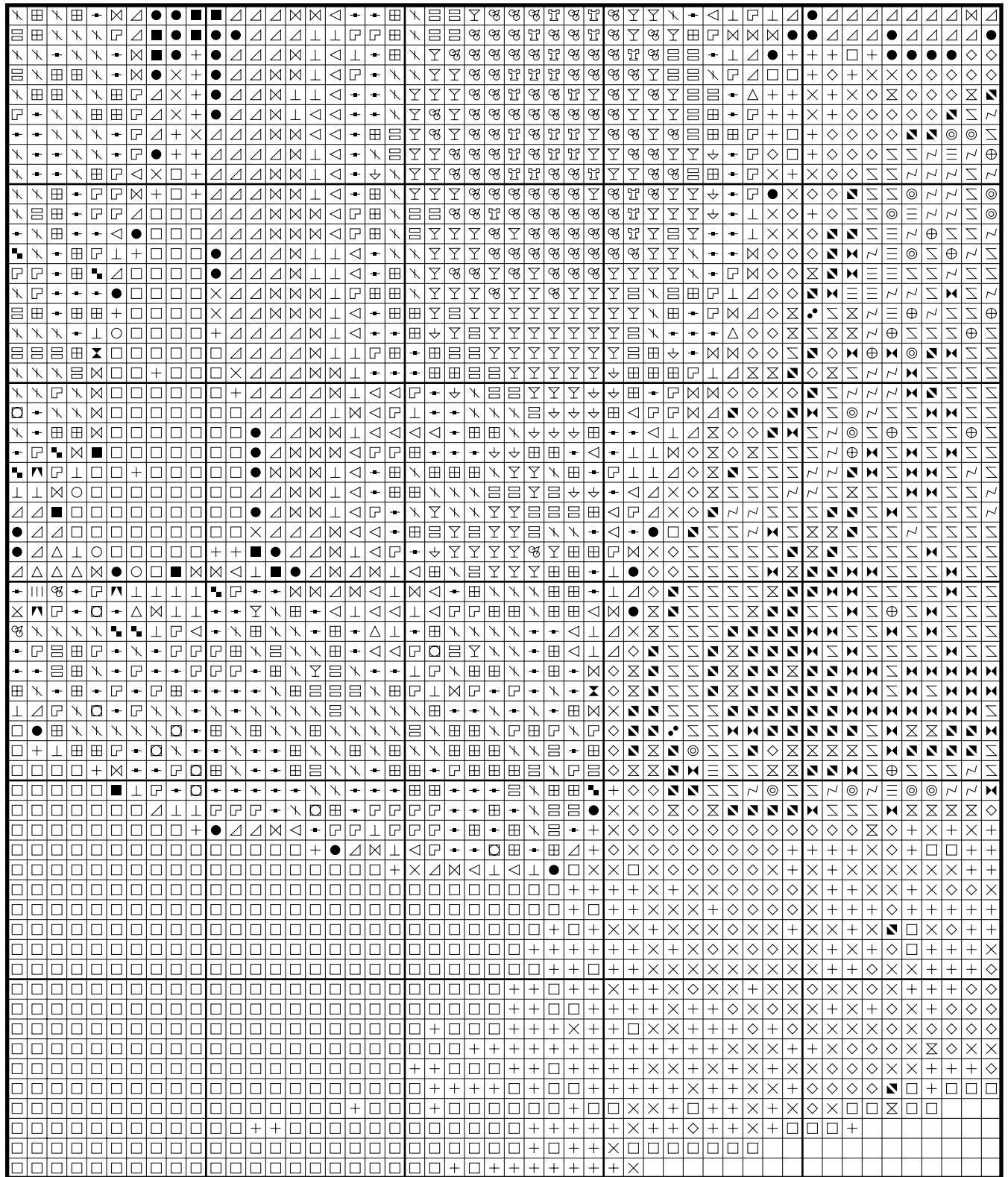
Madonna Della Seggiola by Raphael



Madonna Della Seggiola by Raphael

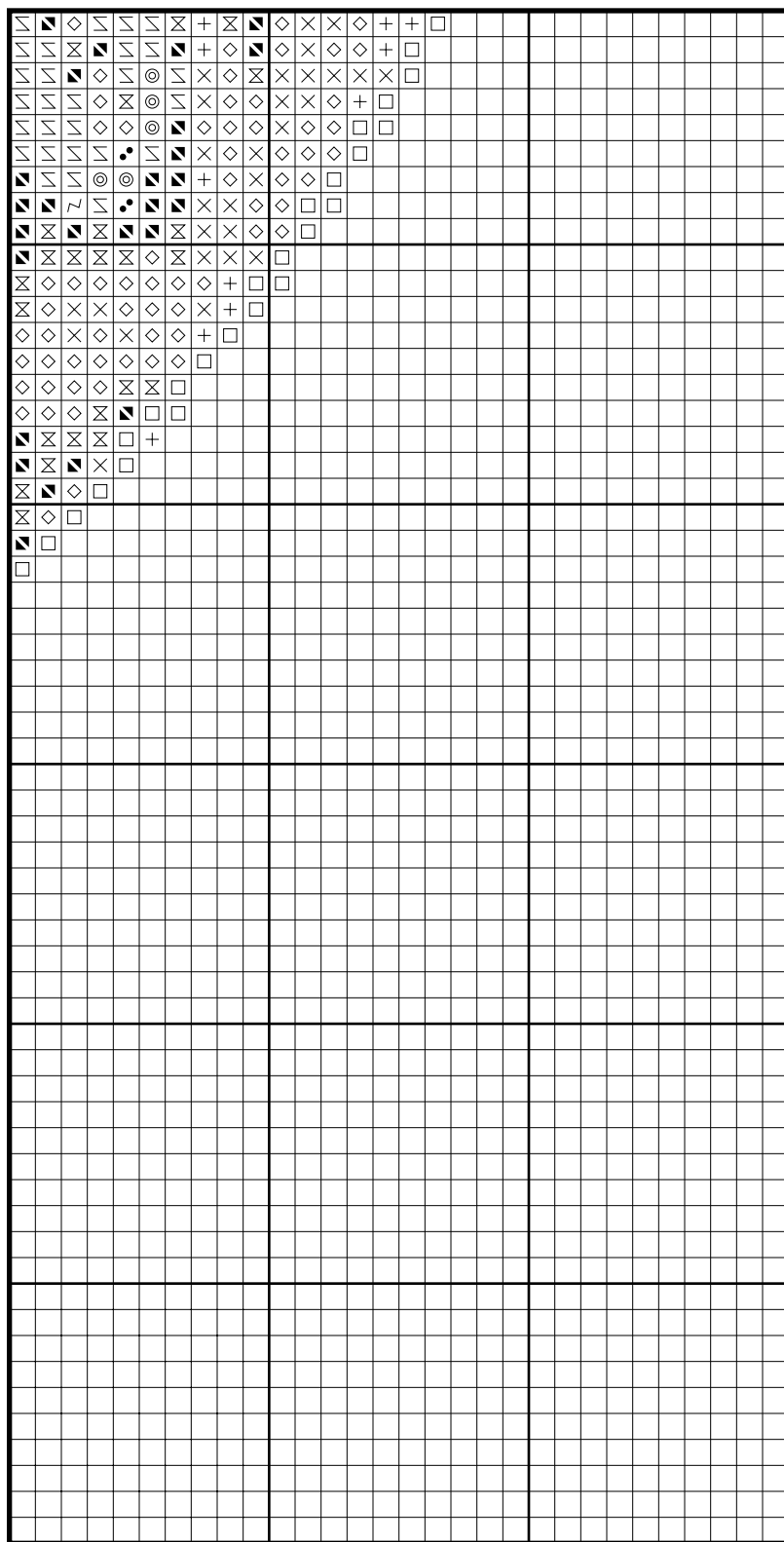


Madonna Della Seggiola by Raphael

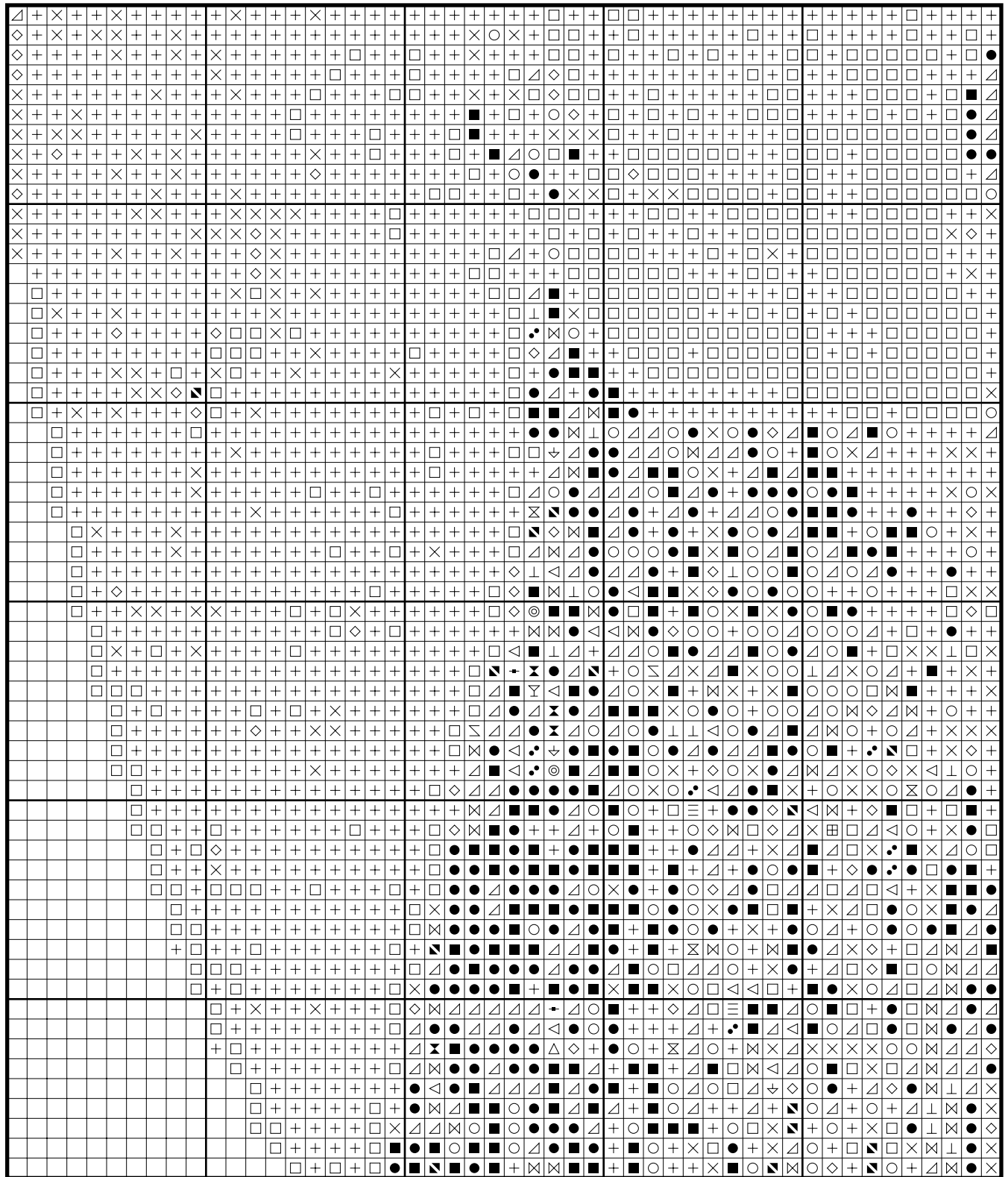


[illegible]

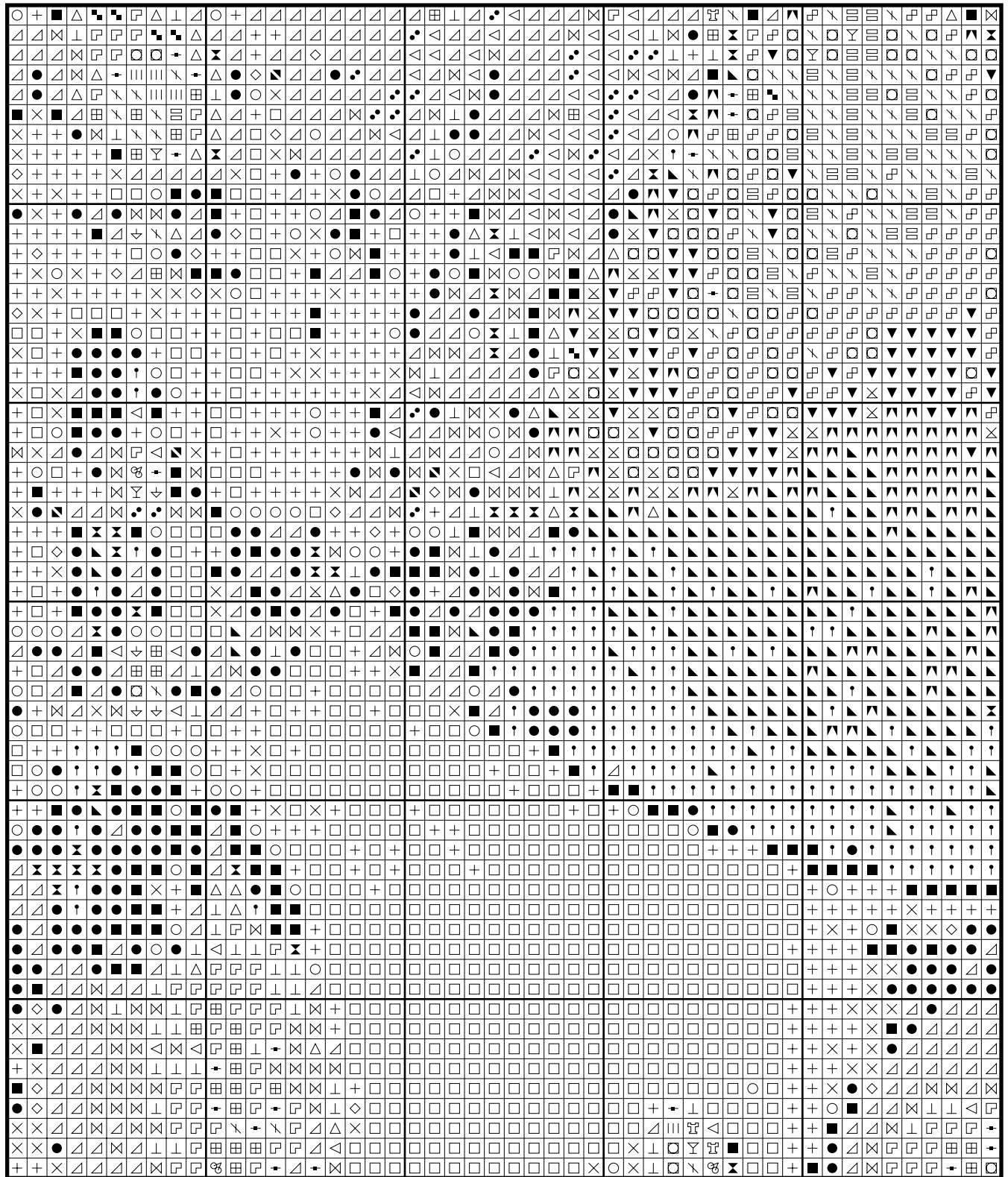
Madonna Della Seggiola by Raphael



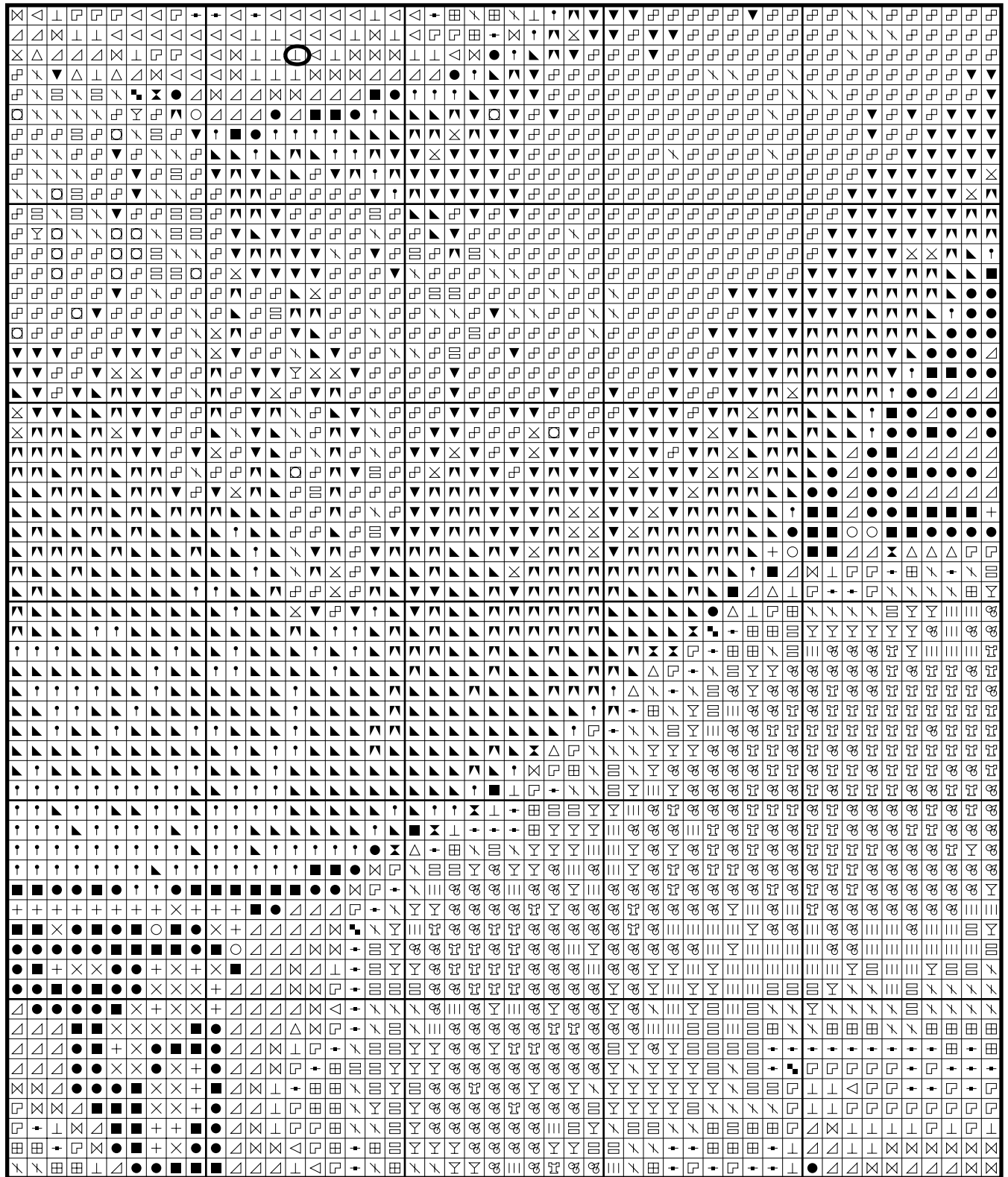
Madonna Della Seggiola by Raphael



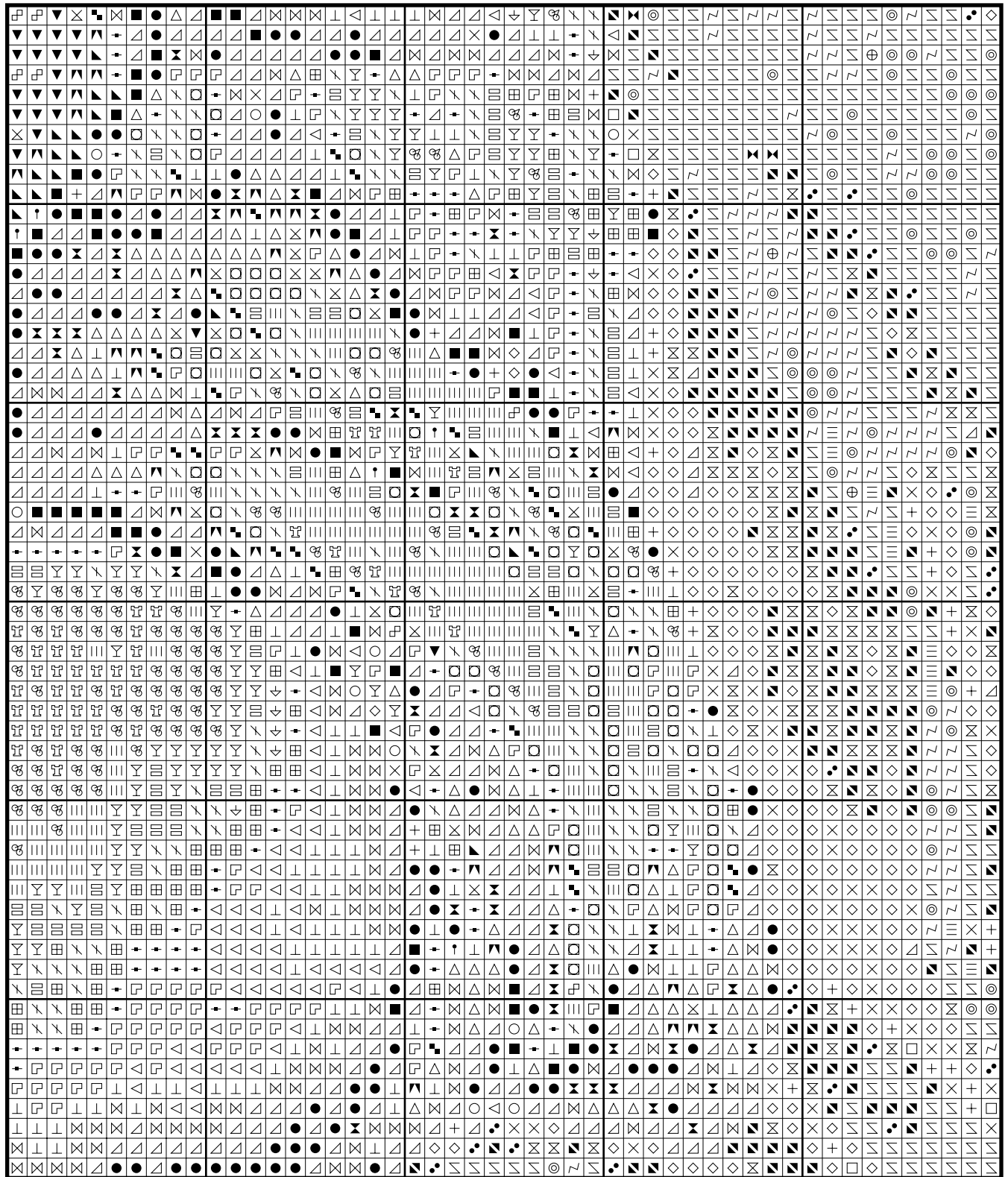
Madonna Della Seggiola by Raphael



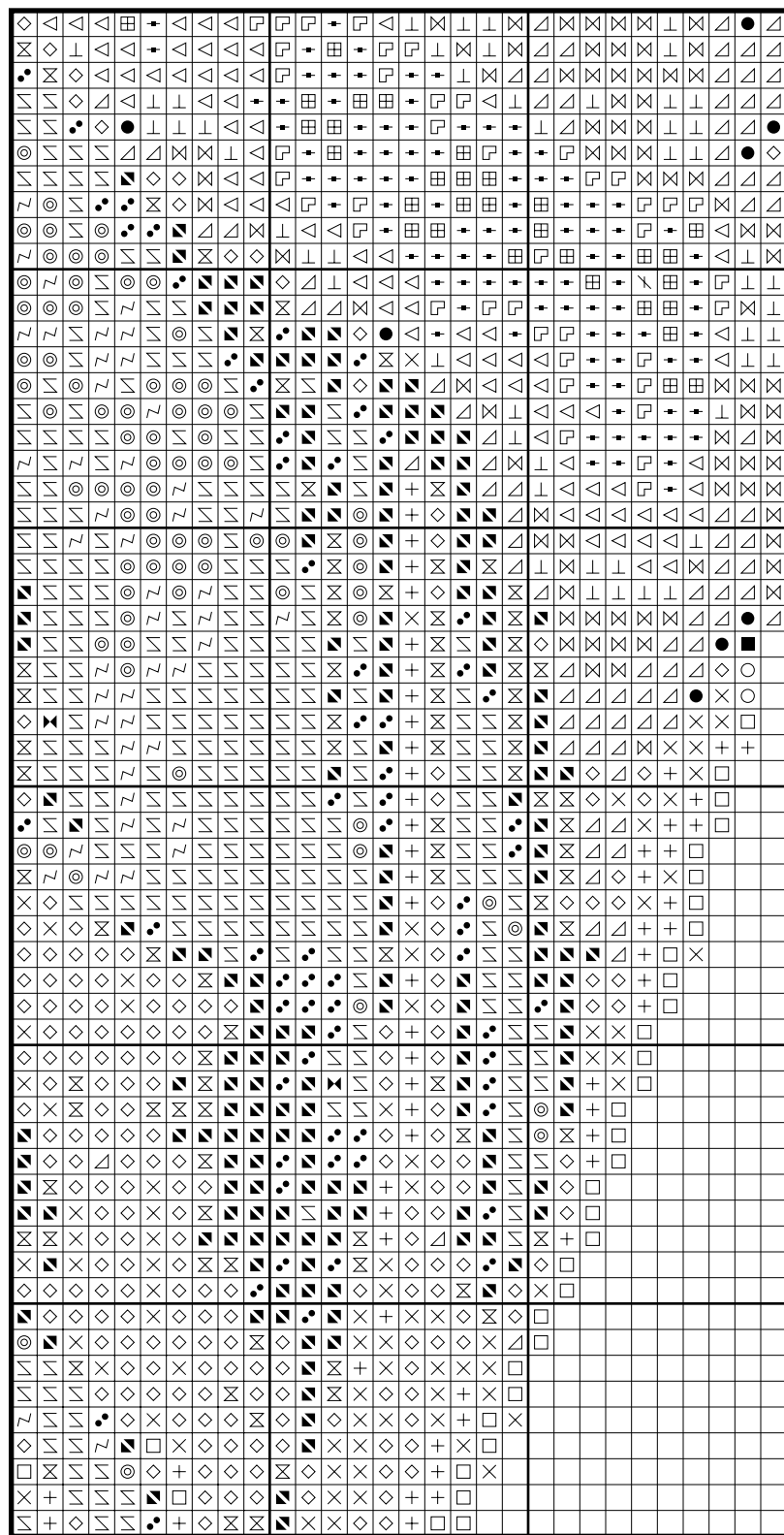
Madonna Della Seggiola by Raphael



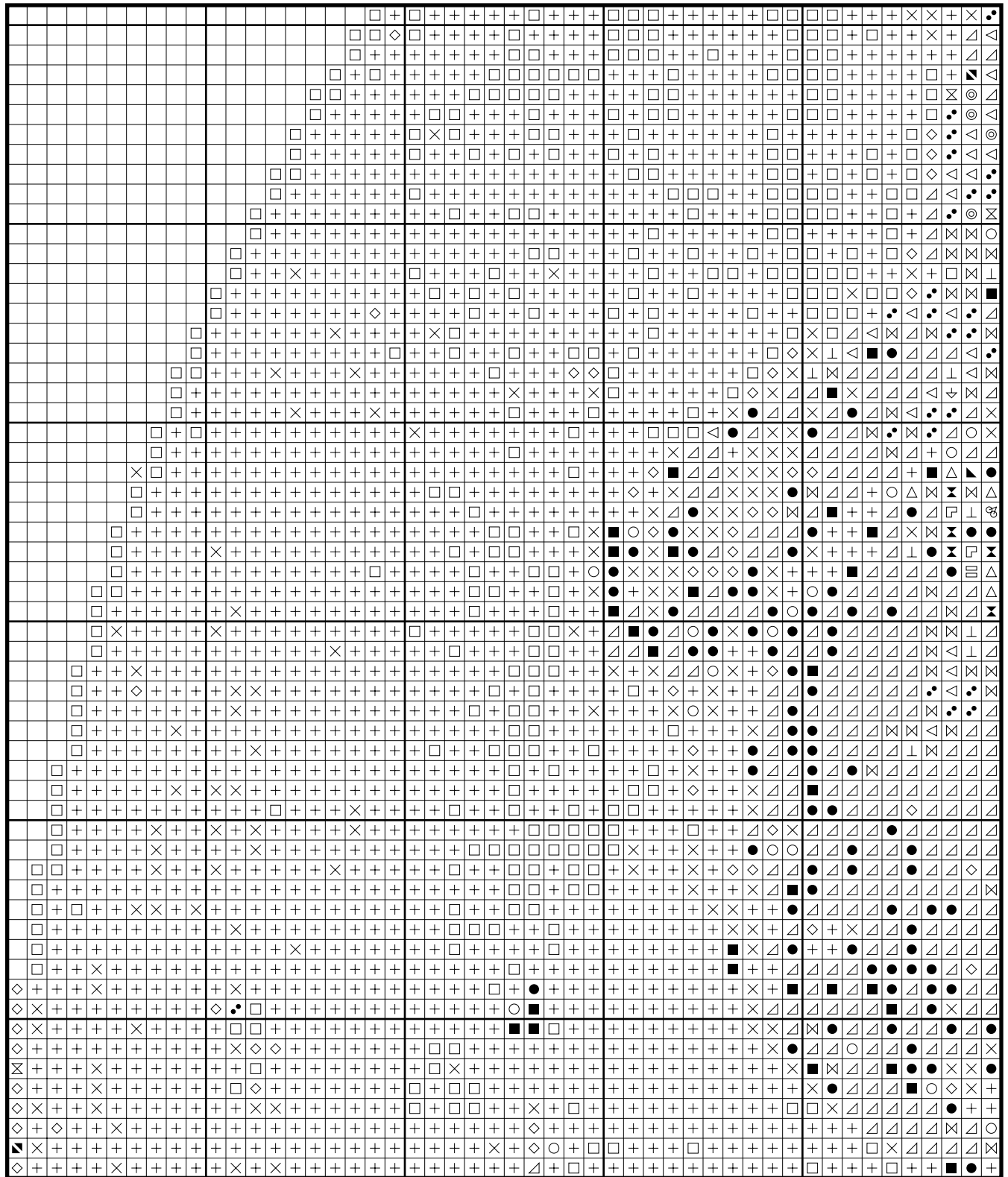
Madonna Della Seggiola by Raphael



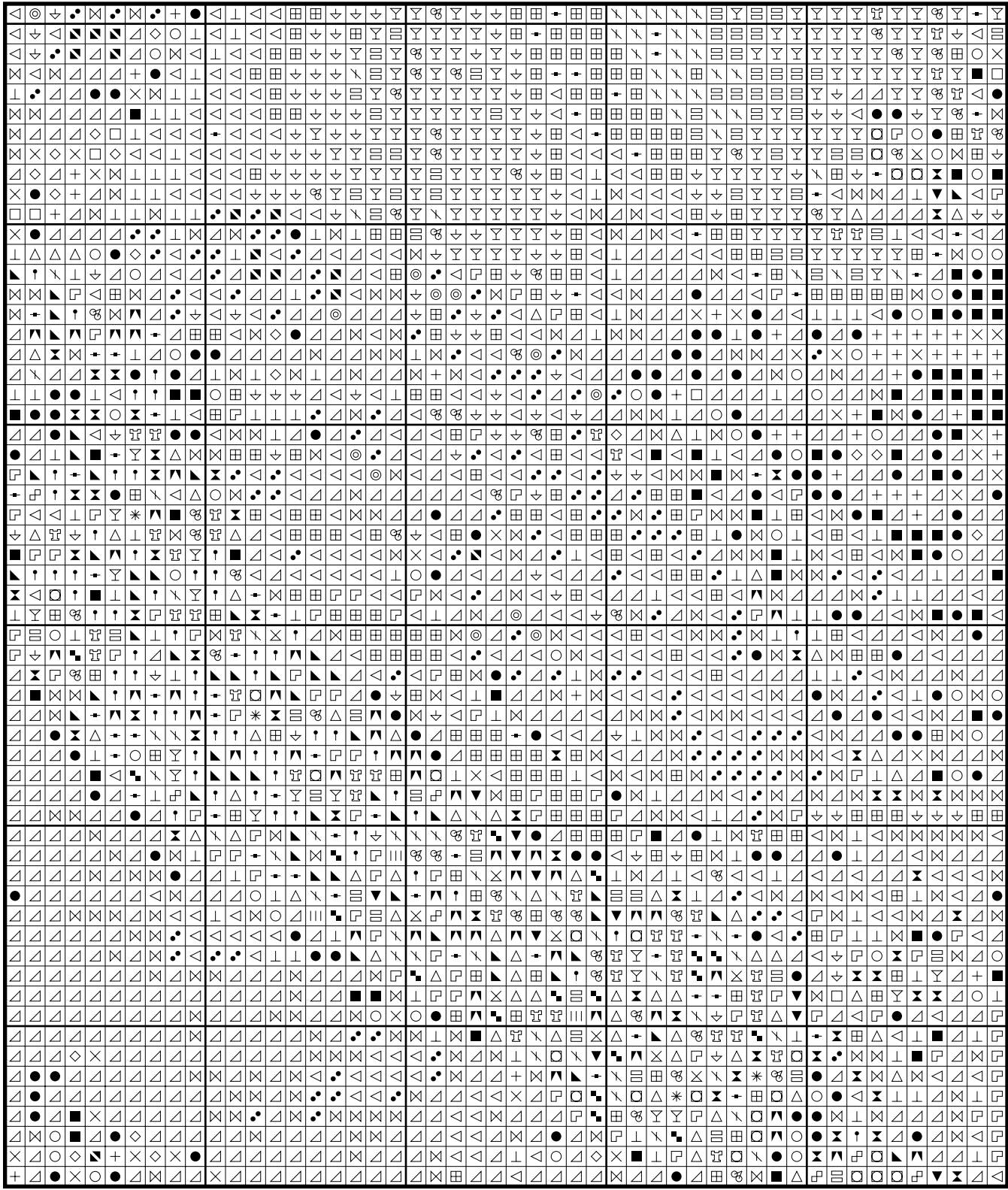
Madonna Della Seggiola by Raphael



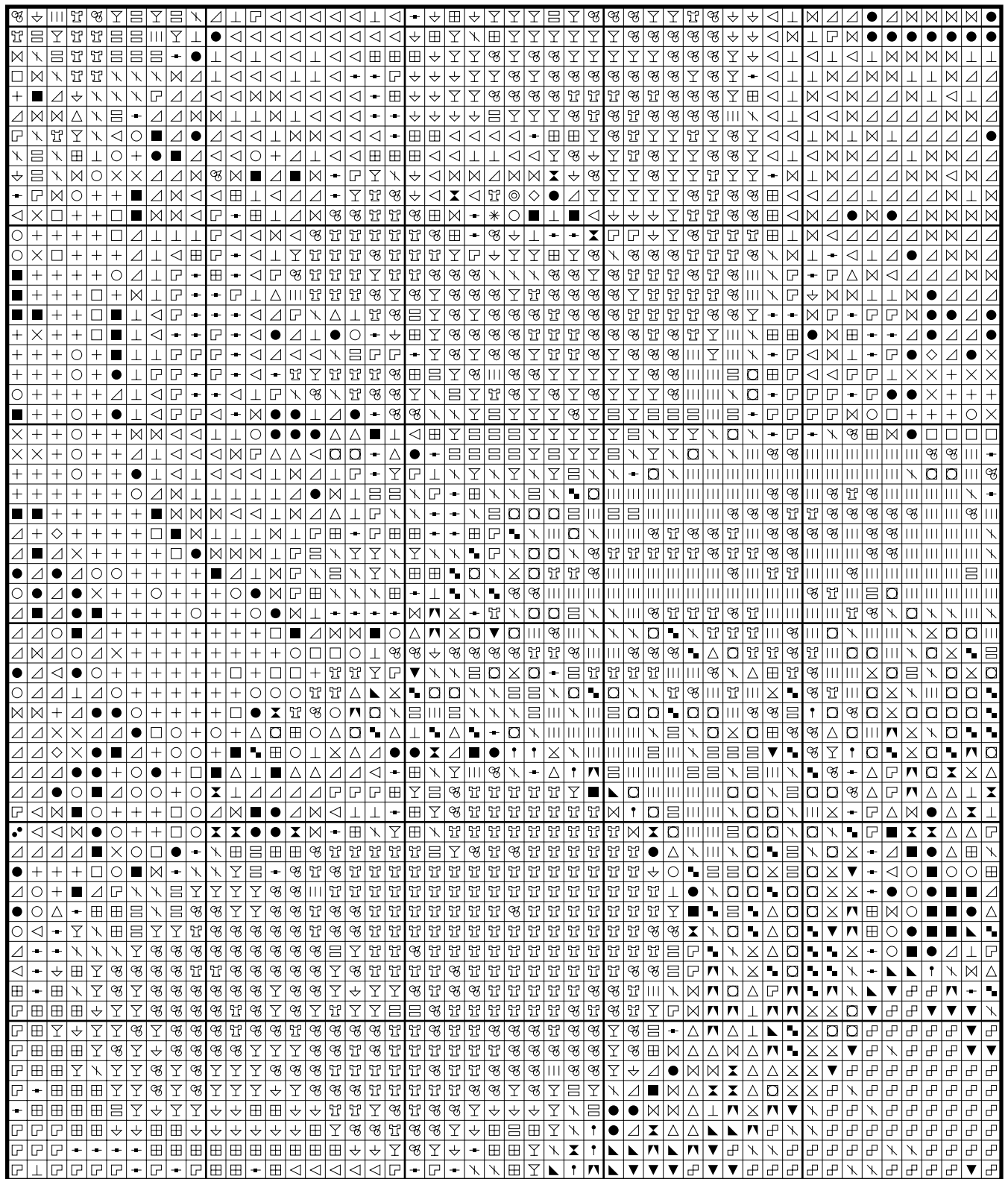
Madonna Della Seggiola by Raphael



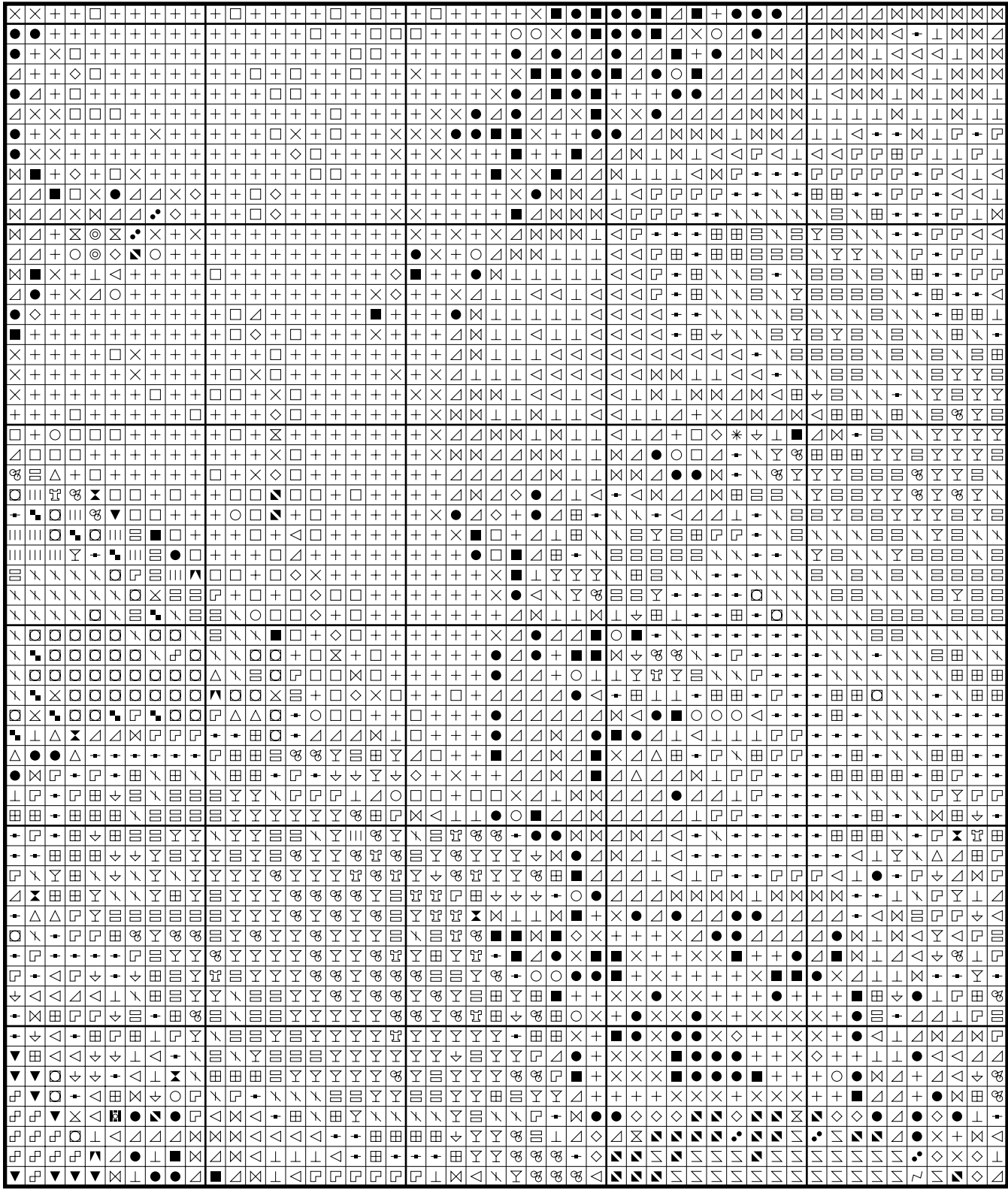
Madonna Della Seggiola by Raphael



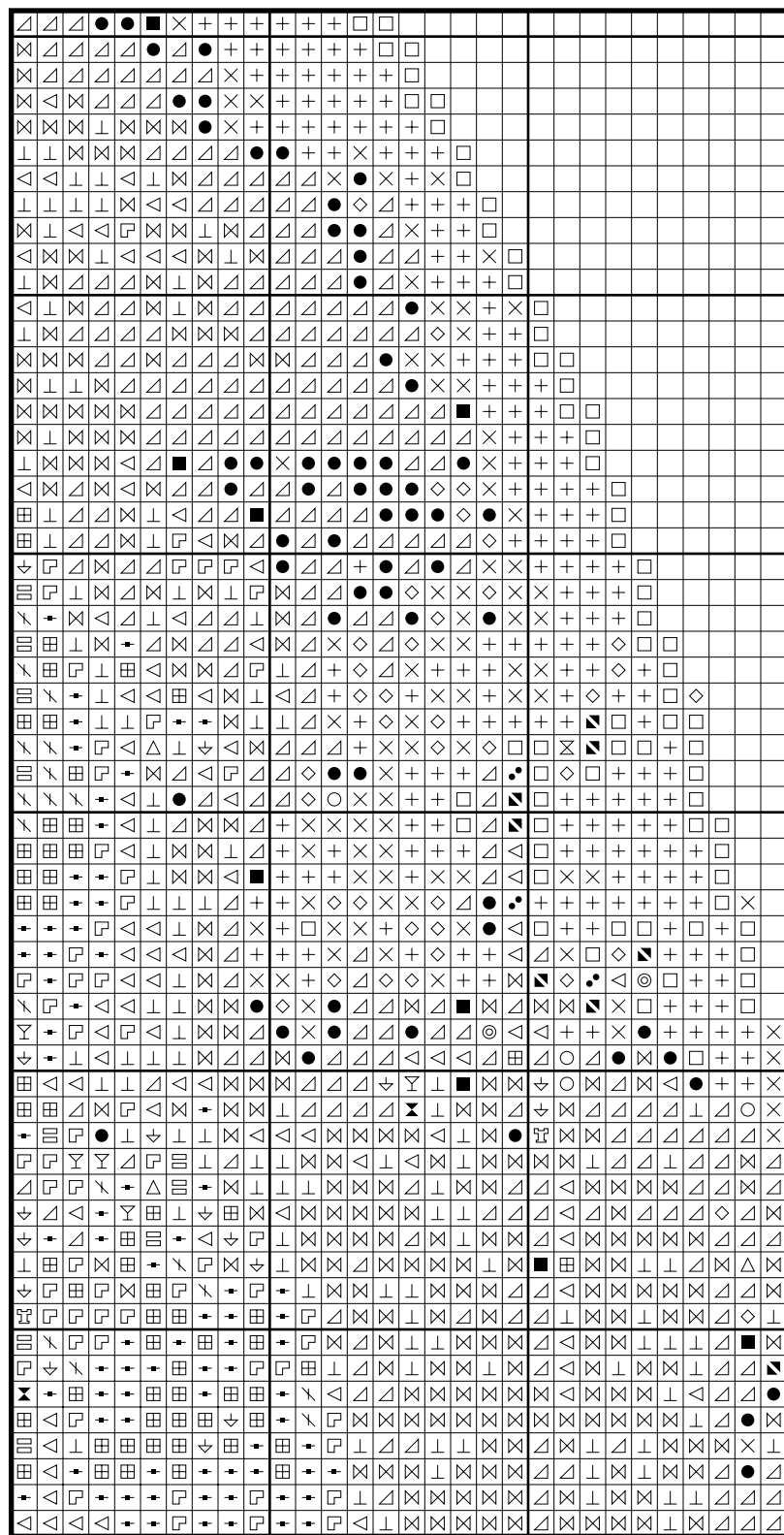
Madonna Della Seggiola by Raphael



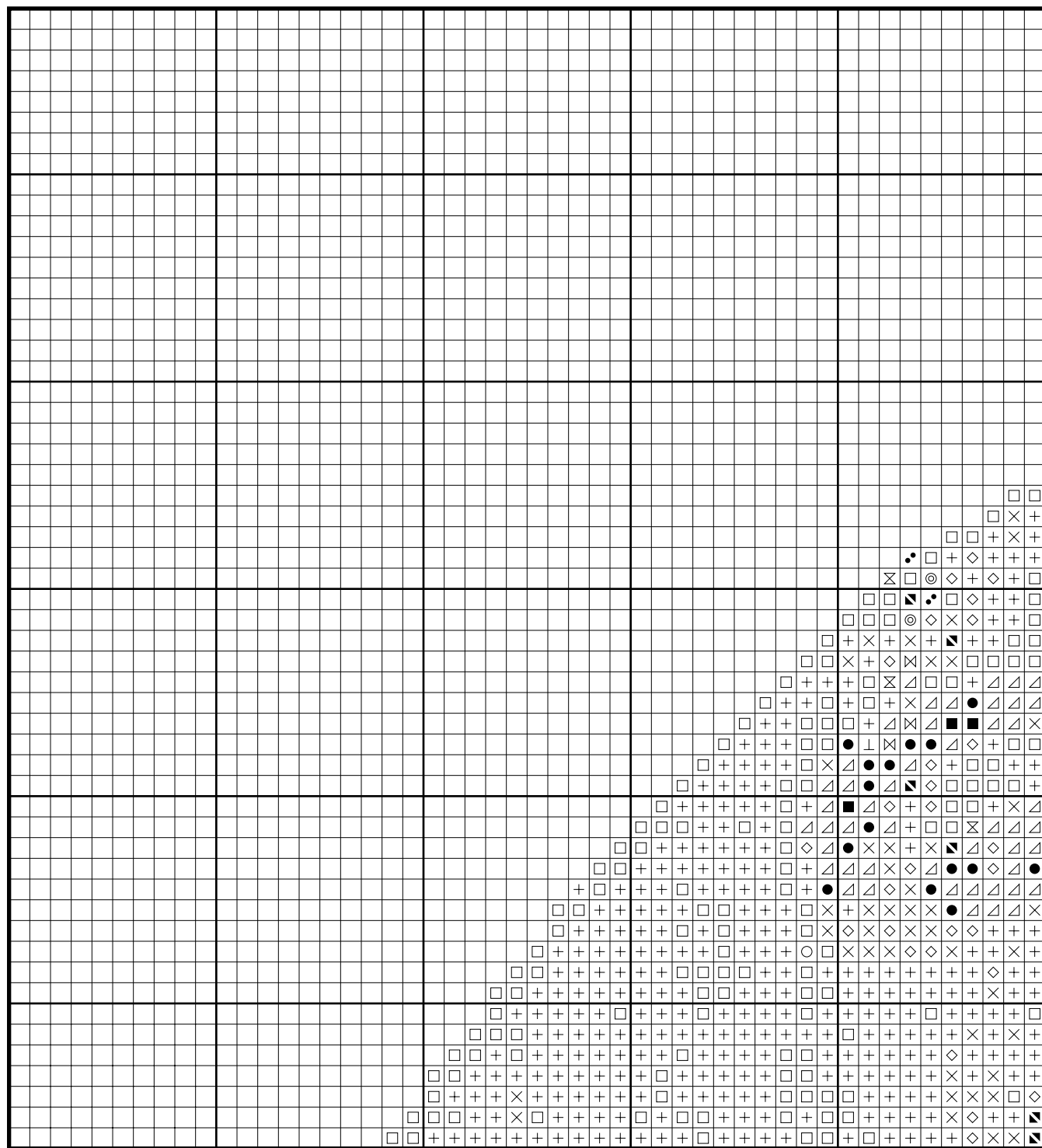
Madonna Della Seggiola by Raphael



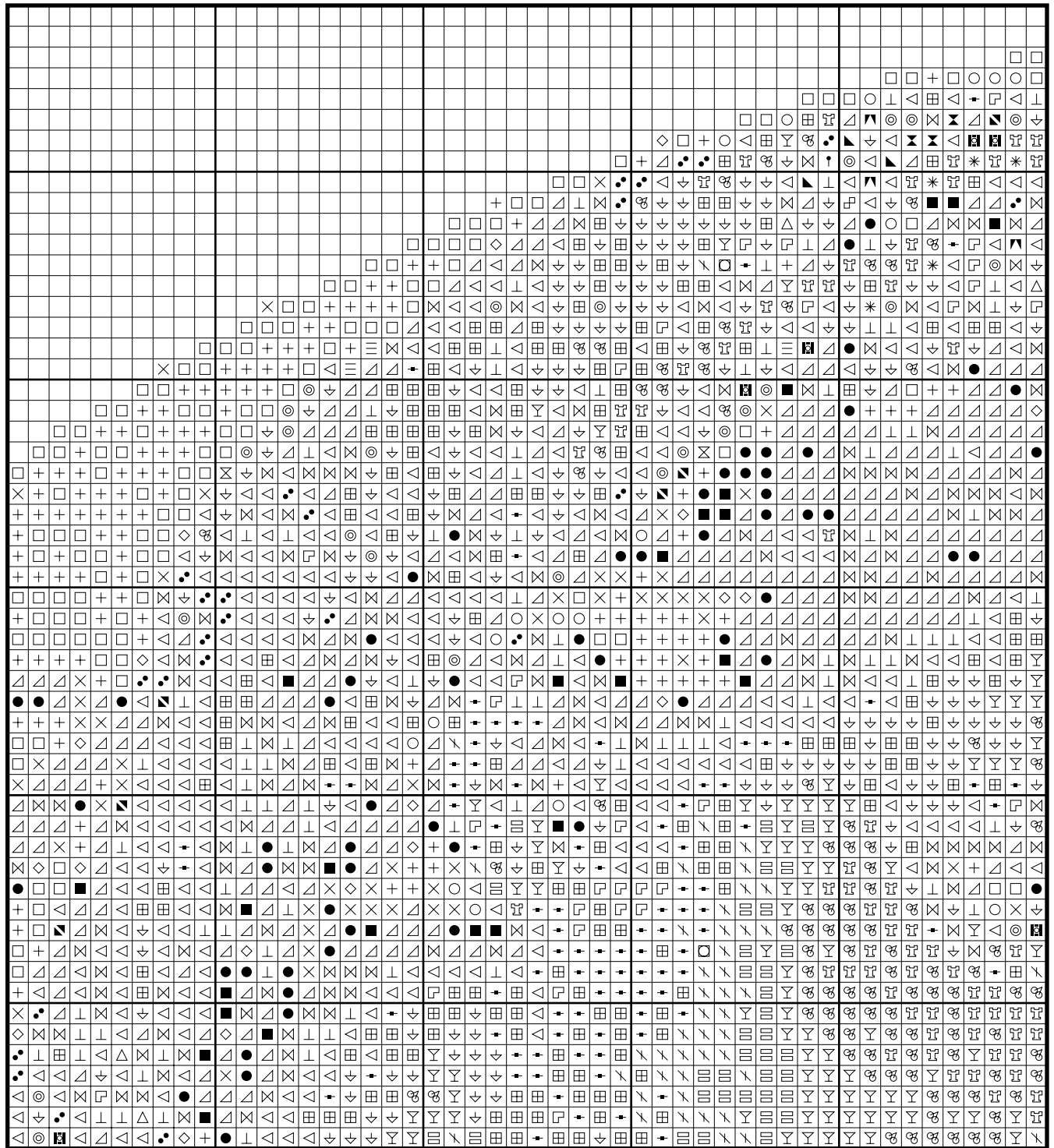
Madonna Della Seggiola by Raphael



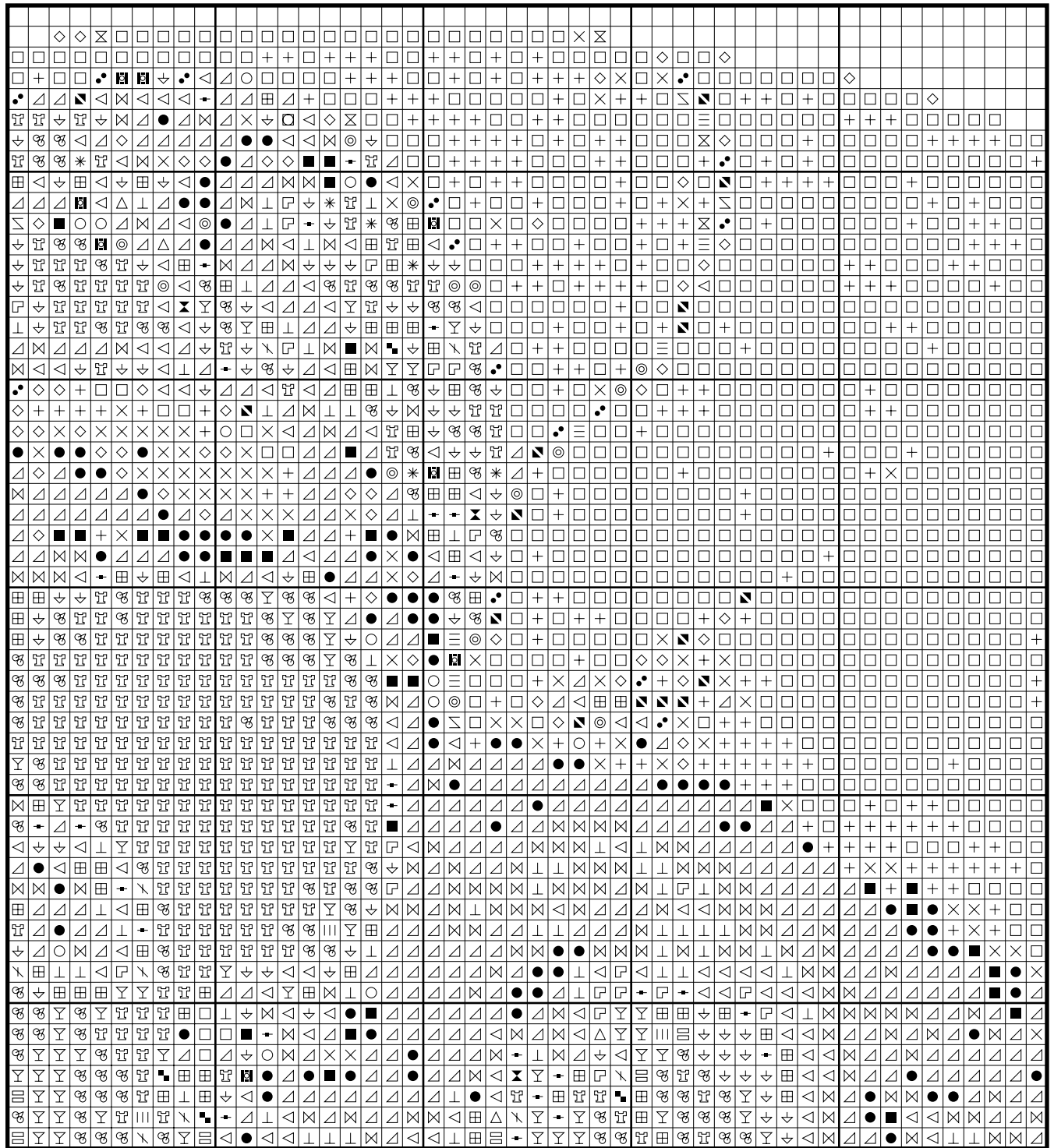
Madonna Della Seggiola by Raphael



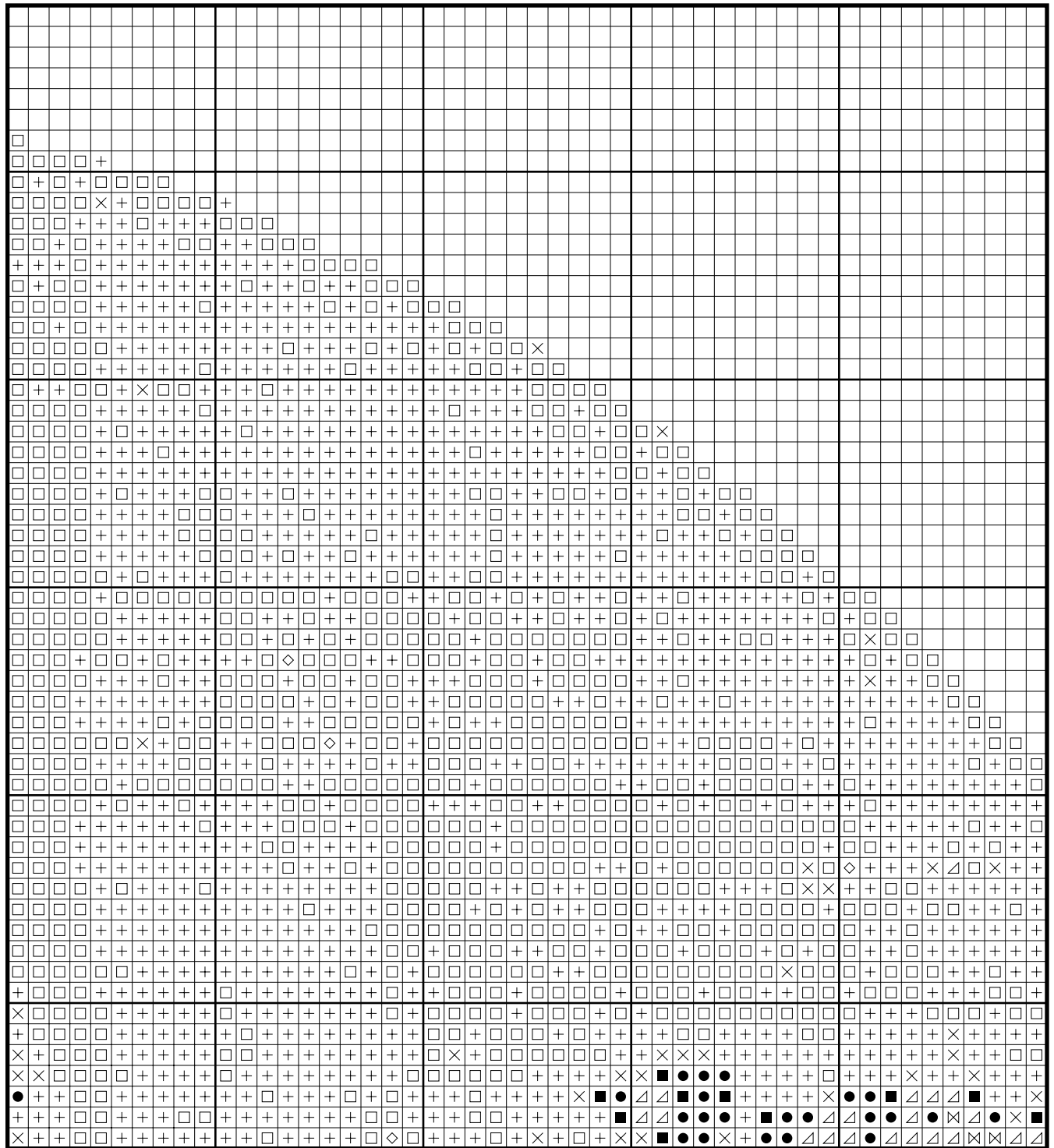
Madonna Della Seggiola by Raphael



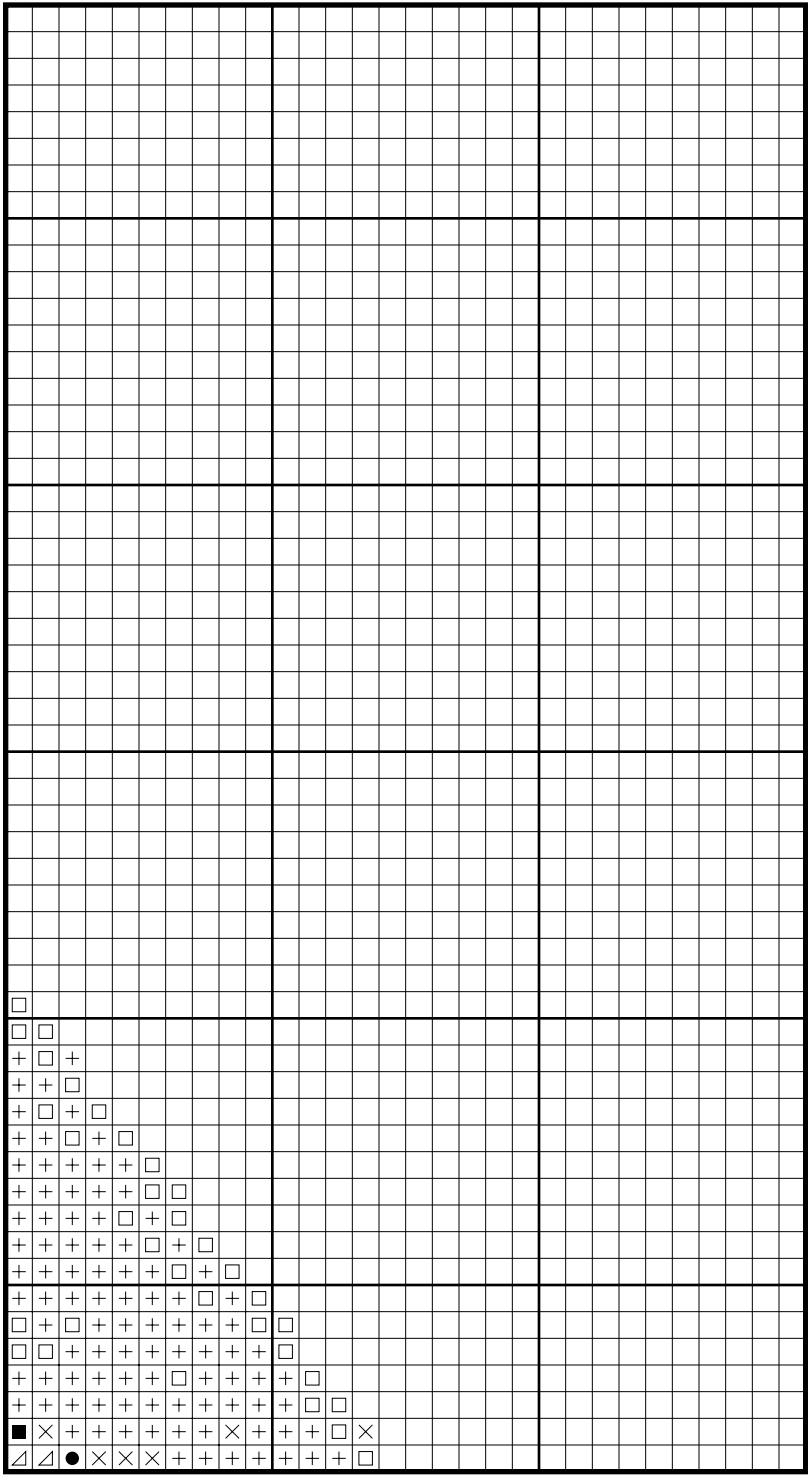
Madonna Della Seggiola by Raphael



Madonna Della Seggiola by Raphael



Madonna Della Seggiola by Raphael



DMC 936 Very Dark Avocado Green: 1409 stitches
 DMC 500 Very Dark Blue Green: 5866 stitches
 DMC 3031 Very Dark Mocha Brown: 488 stitches
 DMC 935 Dark Avocado Green: 6321 stitches
 DMC 839 Dark Beige Brown: 824 stitches
 DMC 3011 Dark Khaki Green: 3554 stitches
 DMC 3781 Dark Mocha Brown: 1469 stitches
 DMC 924 Very Dark Gray Green: 351 stitches
 DMC 890 Ultra Dark Pistachio Green: 1111 stitches
 DMC 645 Very Dark Beaver Gray: 685 stitches
 DMC 930 Dark Antique Blue: 128 stitches
 DMC 3346 Hunter Green: 337 stitches
 DMC 334 Medium Baby Blue: 63 stitches
 DMC 931 Medium Antique Blue: 1248 stitches
 DMC 407 Dark Desert Sand: 419 stitches
 DMC 300 Very Dark Mahogany: 398 stitches
 DMC 3862 Dark Mocha Beige: 305 stitches
 DMC 420 Dark Hazelnut Brown: 218 stitches
 DMC 3772 Very Dark Desert Sand: 654 stitches
 DMC 610 Dark Drab Brown: 1795 stitches
 DMC 611 Drab Brown: 1105 stitches
 DMC 356 Medium Terra Cotta: 401 stitches
 DMC 782 Dark Topaz: 164 stitches
 DMC 3826 Golden Brown: 138 stitches
 DMC 3012 Medium Khaki Green: 1466 stitches
 DMC 370 Medium Mustard: 867 stitches
 DMC 783 Medium Topaz: 384 stitches
 DMC 612 Light Drab Brown: 1083 stitches
 DMC 372 Light Mustard: 1070 stitches
 DMC 922 Light Copper: 668 stitches
 DMC 437 Light Tan: 1116 stitches
 DMC 725 Topaz: 388 stitches
 DMC 932 Light Antique Blue: 100 stitches
 DMC 640 Very Dark Beige Gray: 501 stitches
 DMC 807 Peacock Blue: 842 stitches
 DMC 3782 Light Mocha Brown: 562 stitches
 DMC 729 Medium Old Gold: 674 stitches
 DMC 834 Very Light Golden Olive: 1104 stitches
 DMC 738 Very Light Tan: 1006 stitches
 DMC 727 Very Light Topaz: 880 stitches
 DMC 644 Medium Beige Gray: 17 stitches
 DMC 3865 Winter White: 17 stitches

* Generally 30 stitches will use 1 metre of DMC floss.

PATTERN LAYOUT				
17	18	19	20	21
12	13	14	15	16
7	8	9	10	11
2	3	4	5	6

